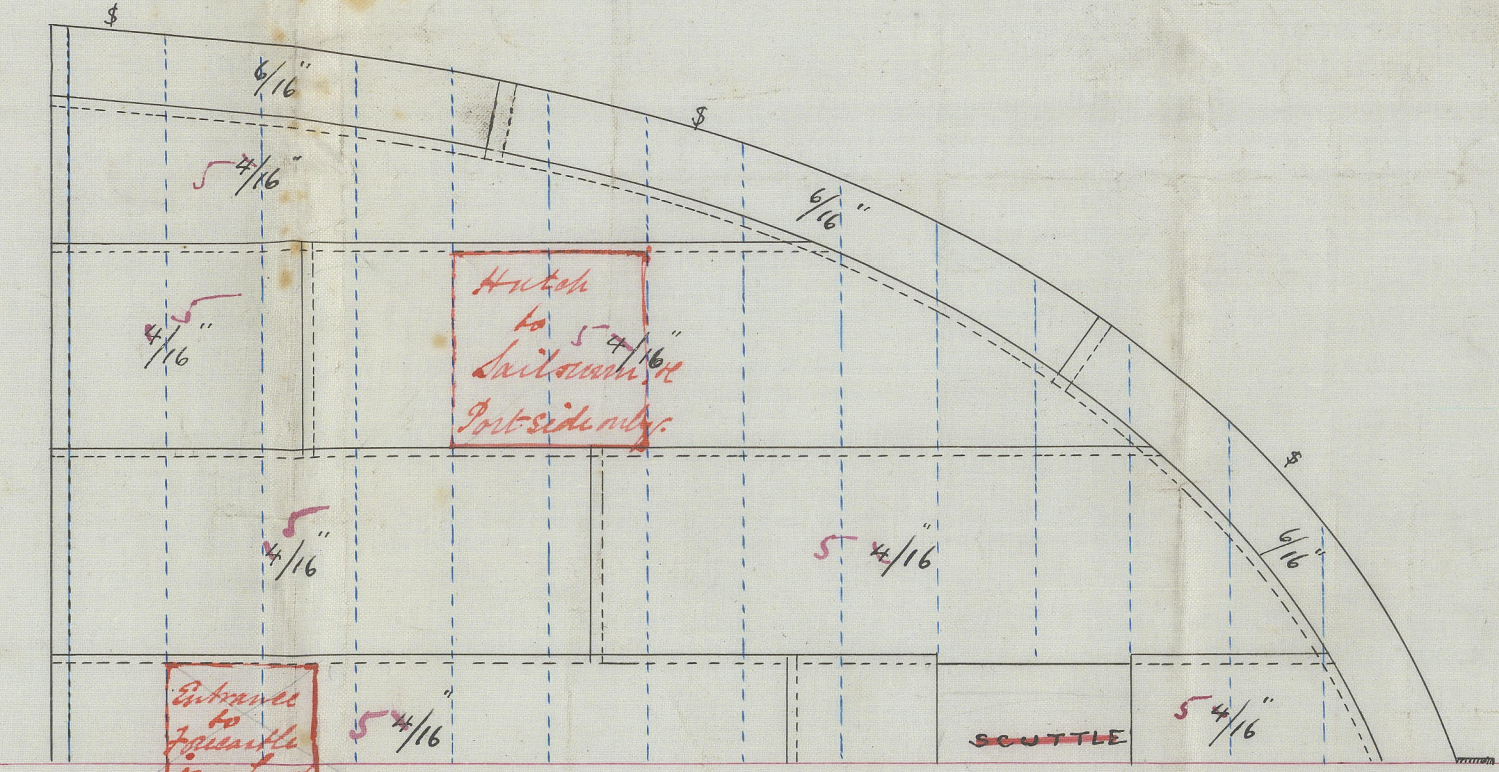
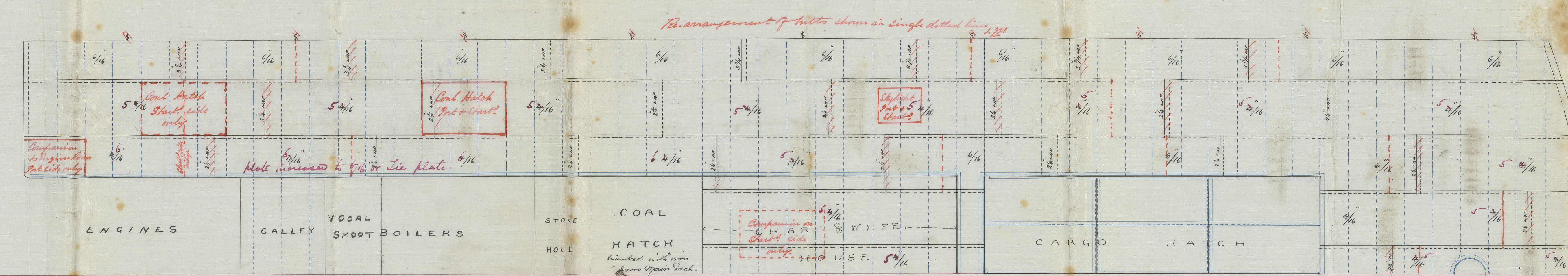
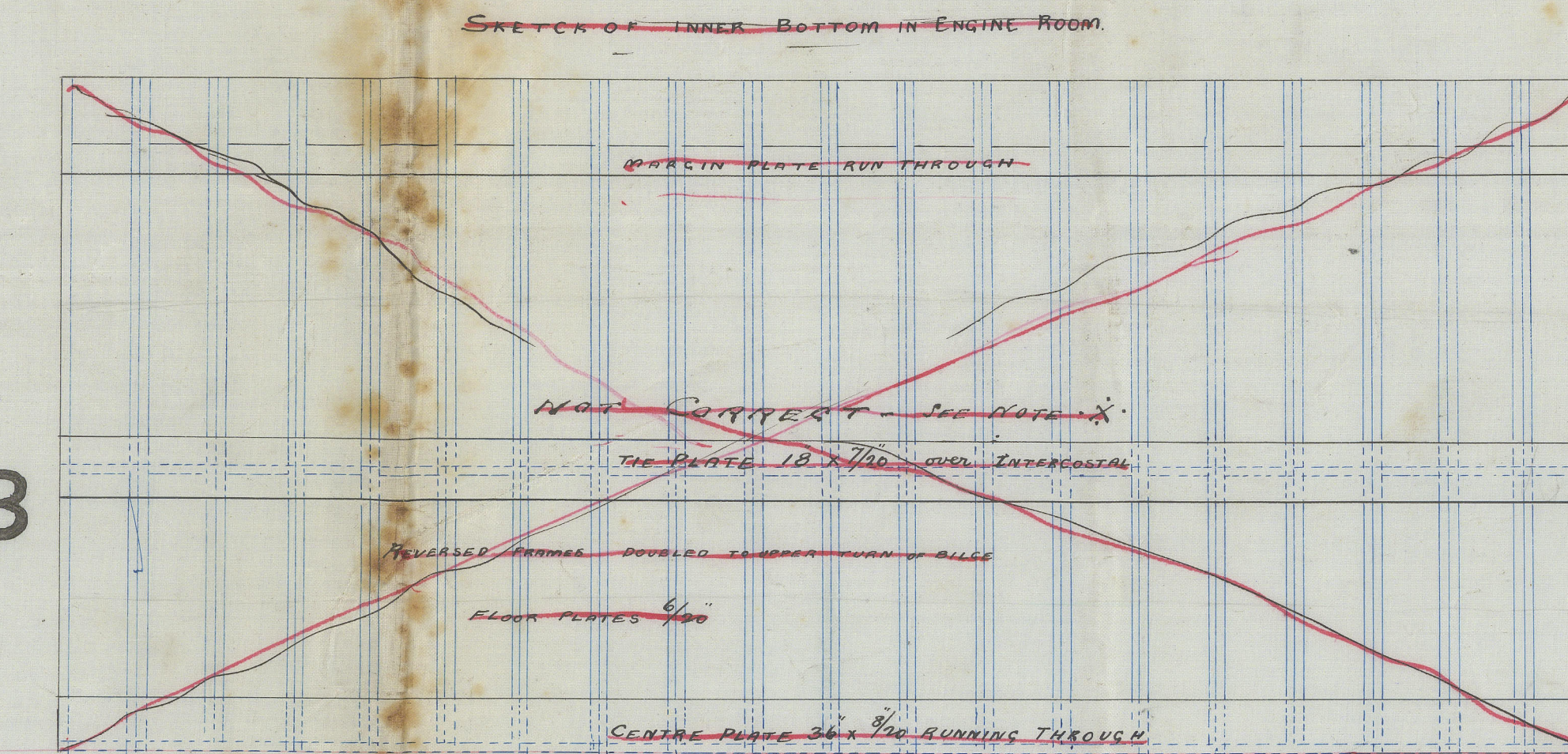
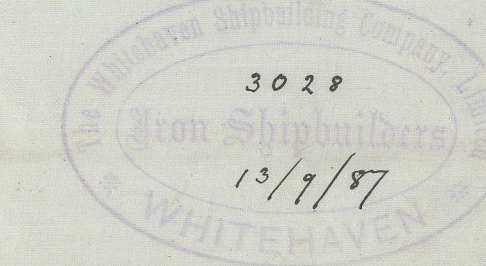


22987

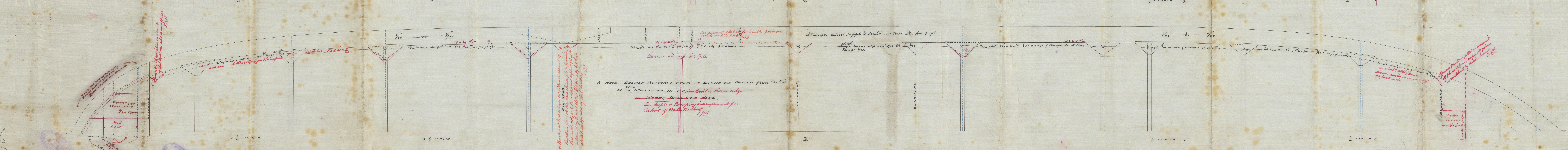
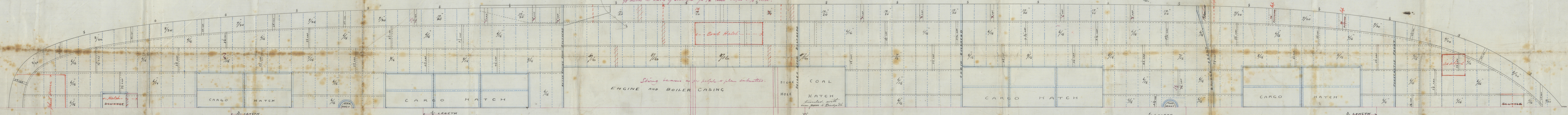
Sheet S. S. "Hercules" Wh. Twp. No. 3885.

DECK PLATING S.S. No 68

SCALE $\frac{1}{4}$ " = ONE FOOT



NOTE: THICKNESS OF PLATING FOR ALL OF ENGINE & BOILER OPENING, TO BE ARRANGED AFTER WE GET ENGINEERS' PLAN, SHOWING POSITION OF STROKE BEAMS AND COAL HATCHES. Please see submittal (plan attached) 5/23/17



* NOTE: DOUBLE BOTTOM FITTED IN ENGINE AND BOILER ROOMS ONLY. WITH MANHOLES IN TOP OF BOILER ROOM ONLY. NO HATCHES IN BOILER ROOM. See profile & drawings arrangement for detail of Manhole. 5/23/17

20/9/17

WHL039-009

W. J. L.

LAND'S MASTER OF SHIPPING
RECEIVED
21 OCT. 87
LONDON

19 SEP 87
LONDON

1982

Kel 46
20

WHA 1039-0019



© 2021
Lloyd's Register
Foundation