

L.S. Mount & Co.
Barrow Report 103677

Dr. H. Barrow
19/2/83.

MIDSHIP SECTION N° 112.

SCALE $\frac{1}{2}$ INCH = 1 FOOT.

PRINCIPAL DIMENSIONS

| | |
|---------------------------------|---------|
| LENGTH BETWEEN PERPS | 260 - 0 |
| BREADTH MOULDED | 38 - 0 |
| DEPTH | 20 - 0 |
| DEPTH OF HOLD TO TOP OF TANK 1Y | 5 2 |

CLASS 100 A. LLOYDS

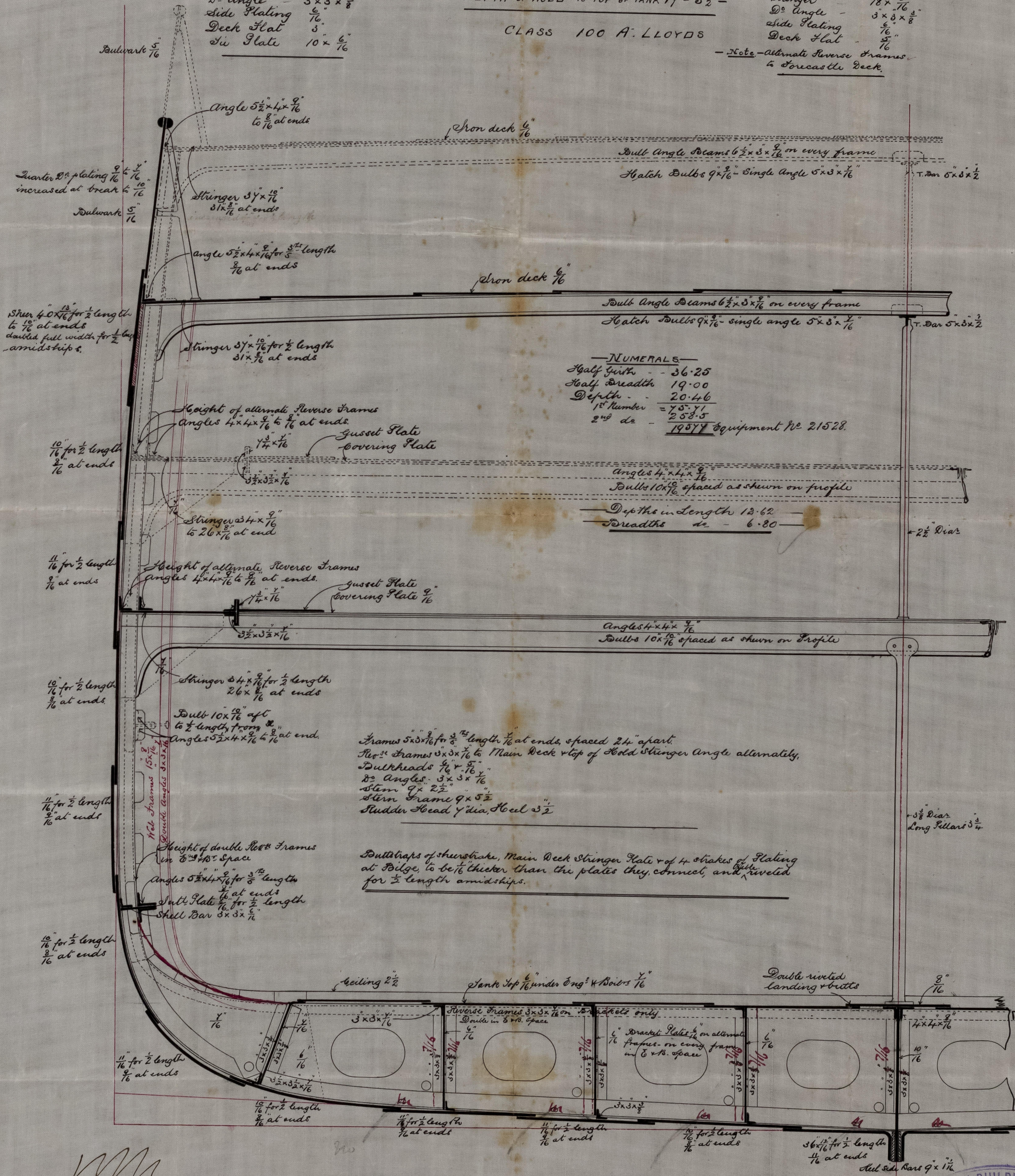
Forecastle

| | |
|----------------------|-------------|
| Beams on every frame | 5 2 x 3 1/2 |
| Stringer | 18 x 1/2 |
| 2° Angle | 3 x 3 x 3/8 |
| Side Plating | 1/2 |
| Deck Flat | 1/2 |

Note - Alternate Reverse Frames to Forecastle Deck.

Bridge

| |
|---|
| Beams 6 x 1/2 - Angles 2 1/2 x 2 1/2 x 5/16 |
| Stringer - 2 1/2 x 1/2 |
| 2° Angle - 3 x 3 x 3/8 |
| Side Plating - 1/2 |
| Deck Flat - 3 |
| Sw. Plate - 10 x 1/2 |



NUMERALS

| | |
|--------------|-------|
| Half Girth | 36.25 |
| Half Breadth | 19.00 |
| Depth | 20.46 |
| 1st Number | 75.71 |
| 2nd d2 | 258.5 |

19577 Equipment No 21528.

Frames 5 x 3 1/2 for 1/2 length 1/2 at ends, spaced 24" apart.
 No. 1 Frames 5 x 3 1/2 to Main Deck & top of Hold Stringer Angle alternately.
 Bulkheads 1/2 x 1/2
 2° Angles 3 x 3 x 3/8
 Stern Frame 9 x 5 1/2
 Rudder Head 1/2 dia. Keel 3 1/2

Bulkheads of stowstrake, Main Deck Stringer Plate & of 4 stowstrakes of Plating at Bilge, to be 1/2 thicker than the plates they connect, and riveted for 1/2 length amidships.

Note - All Shell plating within range of Double Bottom except Garboard Strakes to be reduced 1/2 when 1/2 or above.



Lloyds Register
 Foundation

Brew. N. 3679

2441036-0223

Wölle
MOTTEN

2021

Lloyd's Register
Foundation