

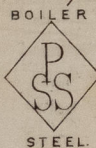
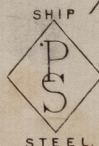
Mill Department.  
London Office.  
11 Queen Victoria St.  
E.C.

Parkhead Iron & Steel  
Forge & Rolling Mills.  
Glasgow. 3<sup>rd</sup> March. 1883

Messrs. Barrow, Shipbuilding Co. Ltd.,

Bought of J. & W. Beardmore.

Manufacturers of Steel Plates & Bars, (Siemens Process) & Iron Plates & Bars for  
Ships, Boilers, &c. & Marine Engine Forgings of all descriptions.  
Iron & Steel Plates flanged for Boiler Fronts &c.



107 2 1/4 2 ✓	<span style="border: 1px solid black; padding: 2px;">14/SS</span>	85 diam. x 19/32	19 3 20
105 4 1 ✓		6 7/8 x 2 1/2 x 3/8	1 2.
107 9 1 ✓		7.5 x . x .	1 3 12
108 14 2 ✓		2.7 x 14 1/2 x 13/32	3 16
16 2 ✓		4.1 x 15 3/4 x "	0 2 20
8 Pairs rail to Barrow.			1 5 3 12

On track No. 6148.

At Wove  
Surveyor, Lloyd's Reg  
Q. 3. 83



© 2021

Lloyd's Register  
Foundation

WHN1036-0214