

27 JUN 1942

Index No. 36876  
(For London Office only).

# Lloyd's Register of Shipping.

## SURVEYS FOR FREEBOARD.

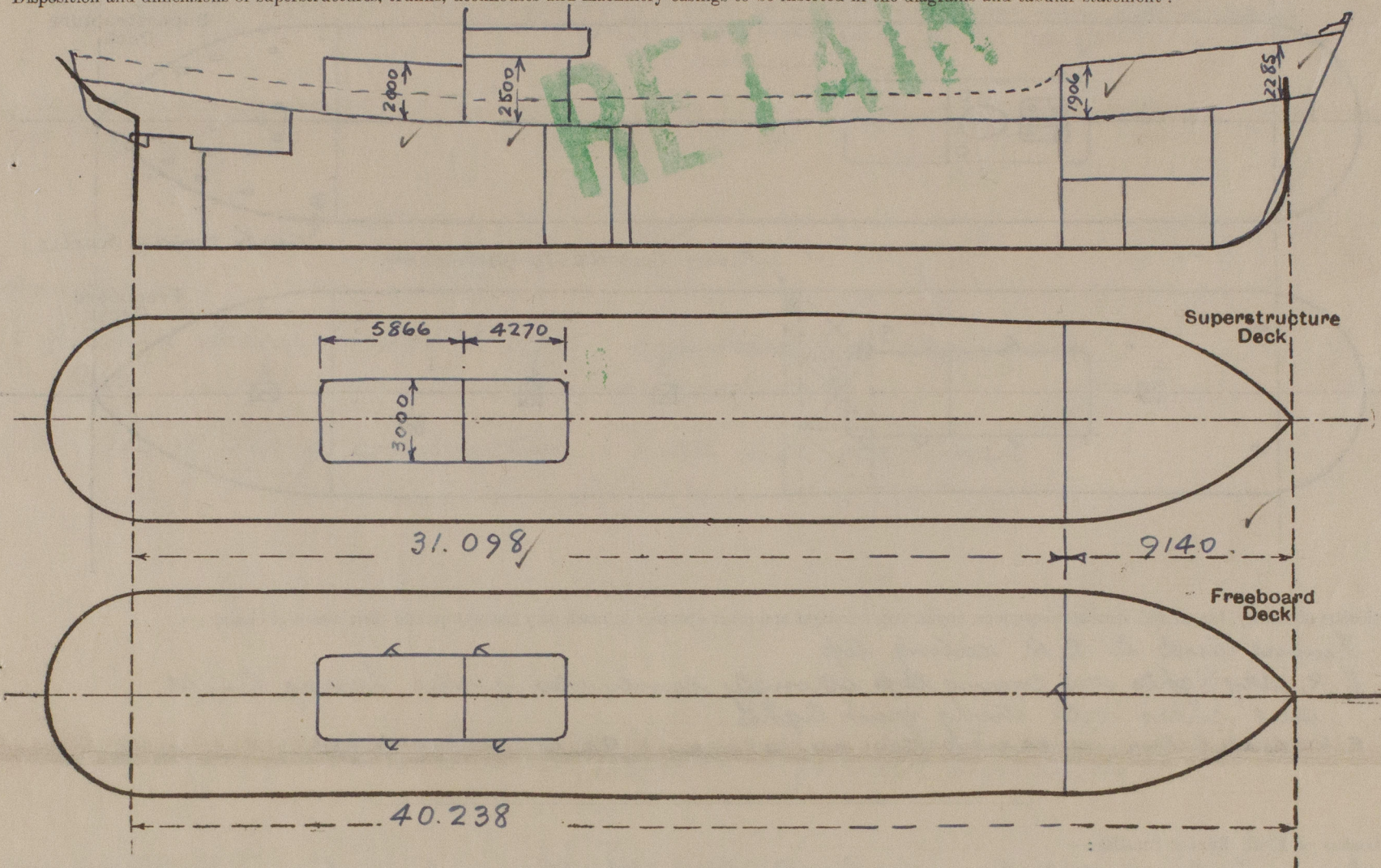
### (CONDITIONS OF ASSIGNMENT.)

Ship's Name **PORT LEVEN**Port of Survey *Lisbon*

Official Number

Surveyor's Signature *G. Orion*Nationality and Port of Registry **BRITISH HULL**Date of Survey *20th June 1942*

Disposition and dimensions of superstructures, trunks, deckhouses and machinery casings to be inserted in the diagrams and tabular statement:—



Particulars of Superstructures, Trunks, Casings, Deckhouses.

	Coaming	Plating	Stiffeners	Spacing	End Attachments of Stiffeners	Size of Openings	Height of Sills	Height of Casings
Poop Bulkhead ... ..	X							
Raised Quarter Deck Bulkhead ...	X							
Bridge, After Bulkhead ... ..	X							
Bridge, Forward Bulkhead ... ..	X							
Forecastle Bulkhead ... ..	7.5	7.5	100 x 75 x 8	750	STIFFENERS FULL HEIGHT	ONE 1800 x 600	550	1906 to 2285
Trunk, Aft ... ..	X							
Trunk, Forward ... ..	X							
Exposed Machinery Casings on Freeboard or Raised Quarter Decks ...								
Exposed Machinery Casings on Superstructure Decks ... ..	7.5	7.5	100 x 75 x 8	750	BRACKETS AT TOP	ONE EACH SIDE 1200 x 600	550	2000
Machinery Casings within Superstructures not fitted with Class I Closing Appliances ... ..	X							
Deckhouses on Flush Deck Ships ...	6	6	75 x 63 x 7.5	650	BRACKETS AT TOP	ONE EACH SIDE 1500 x 650	350	2500

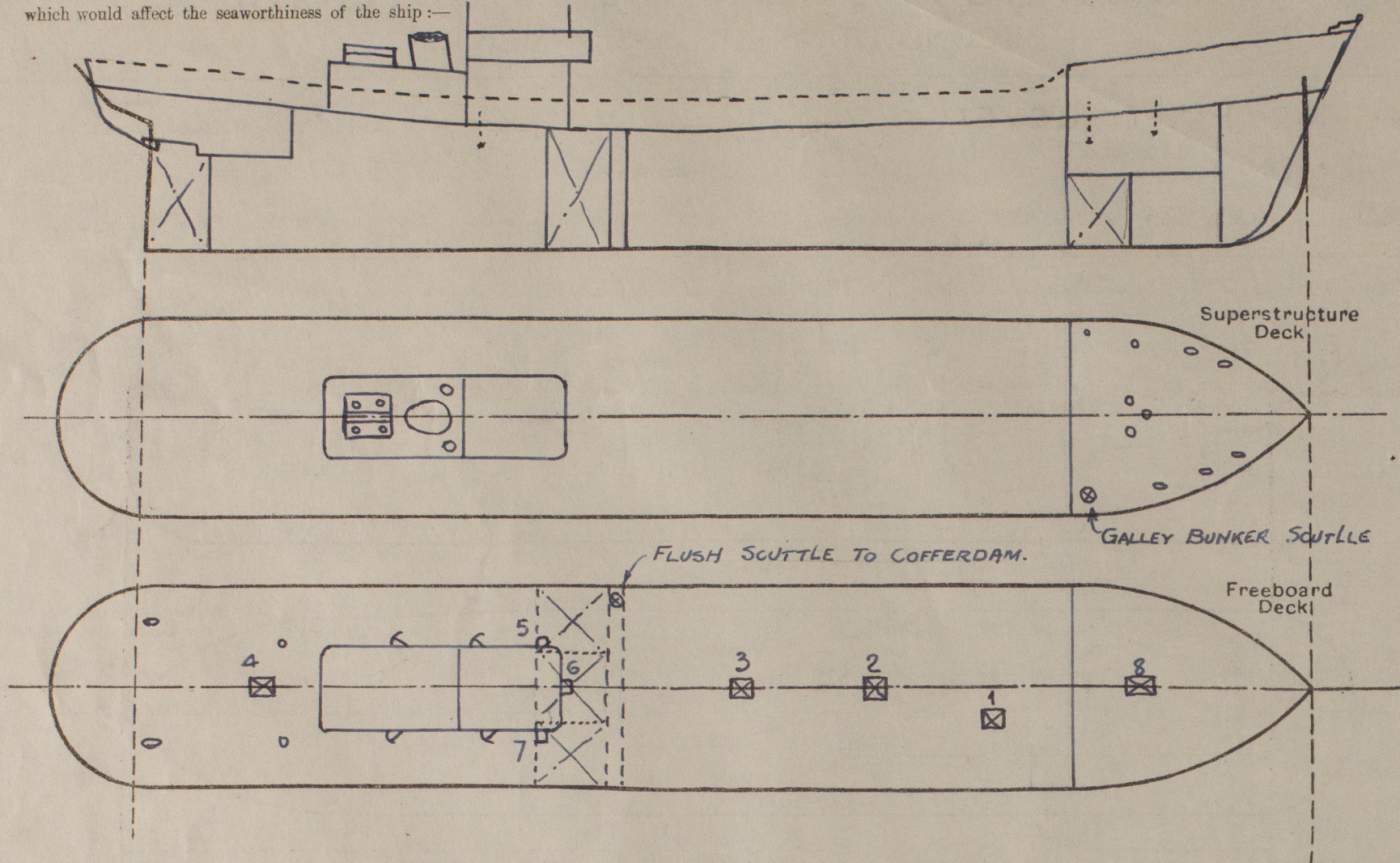
Particulars of Closing Appliances (state if capable of being manipulated from both sides).

Poop Bulkhead ... ..	X
Raised Quarter Deck Bulkhead ...	X
Bridge, After Bulkhead ... ..	X
Bridge, Forward Bulkhead ... ..	X
Forecastle Bulkhead ... ..	HINGED STEEL DOOR
Exposed Machinery Casings on Freeboard or Raised Quarter Decks ...	HINGED STEEL DOOR
Exposed Machinery Casings on Superstructure Decks ... ..	X
Machinery Casings within Superstructures not fitted with Class I Closing Appliances ... ..	X
Deckhouses on Flush Deck Ships ...	HINGED WOOD DOORS



# PARTICULARS OF PROTECTION TO OPENINGS, ETC.

The following diagrams should be used to indicate the positions of cargo and coaling hatchways, gangway, cargo and coaling ports, ventilators, companionways, etc., which would affect the seaworthiness of the ship:—



Particulars of fiddle, funnel and ventilator coamings, engine room skylight and other openings in machinery casing tops and their means of closing:—

- ✓ Funnel direct to E.R. casing top.
- ✓ E.R. Skylights on casing top strongly constructed of steel having hinged steel covers with strong glass lights.
- ✓ E.R. Ventilators on casing top are 400 dia x 9 thick x 1.500 height.

Particulars of Flush Bunker Scuttles:—

- One on freeboard deck for access to cofferdam with strong cash iron frame & cover.
- One on forecastle deck to galley coal bunker " " " " " "
- ✓ Both of bayonet type with chain attachment.

Particulars of Companionways:—

✓

Particulars of Ventilators in exposed positions on freeboard and superstructure decks:—

- Freeboard Deck:— 2 x 200 7/8 dia x 9 thick x 910 height to steering gear space aft. ✓
- 2 x 150 x 100 Gooseneck type 300 height of C.I. " " " " " "

- Forecastle Deck:— 1 x 300 dia. x 9 thick x 700 height to file space. ✓
- 2 x 200 " x 9 " x 700 " " forward accom below deck. ✓
- 1 x 150 " Mushroom type with screw down cover to file space. ✓
- 5 x 150 x 100 Gooseneck type 300 height of C.I. " " " " " "

Except mushroom type are fitted with wood plugs & canvas cover

Particulars of Air Pipes in exposed positions on freeboard, raised quarter, or superstructure decks:—

- 3 x 2" dia. x 2 M. height from O.F. tanks, fitted with gauge wire. ✓
- 1 x 2" " x 1 M. " " A.P. Tanks ✓
- 1 x 2" " x 500 7/8 " " F.P. " ✓
- 1 x 2" " x 300 7/8 " " F.W. " ✓

Except O.F. Tank air pipes are fitted with wood plugs. ✓

"PORT LEVEN"

Particulars of Gangway Cargo and Coaling Ports:—

None.

Particulars of Scuppers and Sanitary Discharge Pipes:—

- ✓ Scuppers on freeboard deck cut in sheer stroke above deck.
- ✓ No scuppers led overboard from spaces below freeboard deck.

Sanitary discharges from W.C.'s and washplaces in forecastle space and deck house led to ships side below freeboard deck & fitted with brass non-return valves. (W.C.'s and washplaces in the forecastle are surrounded by steel bulkheads.)

Particulars of Side Scuttles:—

- Forward below freeboard deck 3 starboard side 2 port side.
- Aft " " " 4 each side. ✓
- all of strong construction & fitted with deadlights.

Vertical distance of Sill of lowest Side Scuttle above top of keel 3.8 M. (Scuttle in forward crew accom?)

Particulars of Guard Rails:—

On Forecastle:— Stanchions 1.100 high spaced 1.500 apart with 3 rails.

Particulars of Gangways, Lifelines, etc.:—

Life lines provided between file & deck house on freeboard deck. ✓

## Particulars of Freeing Arrangements.

	Length of Bulwark	Height of Bulwark	Size of Freeing Ports	Number each side	Area each side	Rule area each side
After Well ... ..	34 M.	950	600 x 350	9	1.89 sq. m	2.06 sq. m.
Forward Well ... ..						

State position of each freeing port ... (After Well:— Forward port 4.3 M. from file front, remainder spaced equally 3.2 M. (F. and A. position and height above deck edge) (Forward Well:—

State whether the freeing ports are fitted with shutters, bars, or rails, and give particulars of such:— Shutters & 2 horizontal rails. ✓

Additional area where sheer is less than standard. ✓



PARTICULARS OF PROTECTION TO OPENINGS, ETC.

HATCHWAYS ON FREEBOARD AND SUPERSTRUCTURE DECKS.									
			To HOLD	STEERING GEAR SPACE.	O.F. TANKS	To For. P. Accom. P.			
Description of Hatchway ... ..			1. 2. 3.	4	5. 6. 7	8			
Dimensions of Hatchway ... ..			990x990	950x760	450x450	1350x700			
COAMINGS	{	Height above Deck ...	320	200	270	L Coaming			
		Thickness { Sides ...	7.5	8	7.5	7.5			
		Stiffeners ...	✓	✓	✓	✓			
		Brackets, Stays ...	✓	✓	✓	✓			
HATCH BEAMS	{	Number ... ..							
		Spacing ... ..							
		Scantling and Sketch ...	✓	✓	✓	✓			
	{	Bearing Surface ... ..							
FORE AND AFTERS	{	Number ... ..							
		Spacing ... ..							
		Unsupported Lengths ...							
		Scantling* and Sketch ...	✓	✓	✓	✓			
	{	Bearing Surface ... ..							
HATCH COVERS	{	Material ... ..	W. P.	W. T. HINGED	O. T. HINGED	OPEN			
		Thickness ... ..	63	STEEL COVER	STEEL COVERS	HATCH.			
		How fitted ... ..	ONE PIECE ✓	SECURED BY 4-5/8"	SECURED BY 4-7/8"	✓			
		Bearing Surface ...	75 ✓	HINGED BOLTS.	HINGED BOLTS.	✓			
Spacing of Cleats ... ..			350 ✓	✓	✓	✓			
Number of Tarpaulins ... ..			2	✓	✓	✓			
<p>*Are wood fore and afters steel shod at all bearing surfaces? ✓</p> <p>Are battens and wedges efficient and in good condition? <i>yes</i></p> <p>Are tarpaulins in good condition and in accordance with rule requirements? <i>yes</i></p> <p>Are lashings provided in accordance with rule requirements? ✓</p>									

Particulars of any special features :—

Endorsement at first survey and at surveys for renewal of Certificate :—

The fittings and appliances are in accordance with the particulars shown on this form (or as now modified) and are in good condition.

