

Lloyd's Register of Shipping.

SURVEYS FOR FREEBOARD.

(CONDITIONS OF ASSIGNMENT.)

 Index No. *36846*
 (For London Office only).

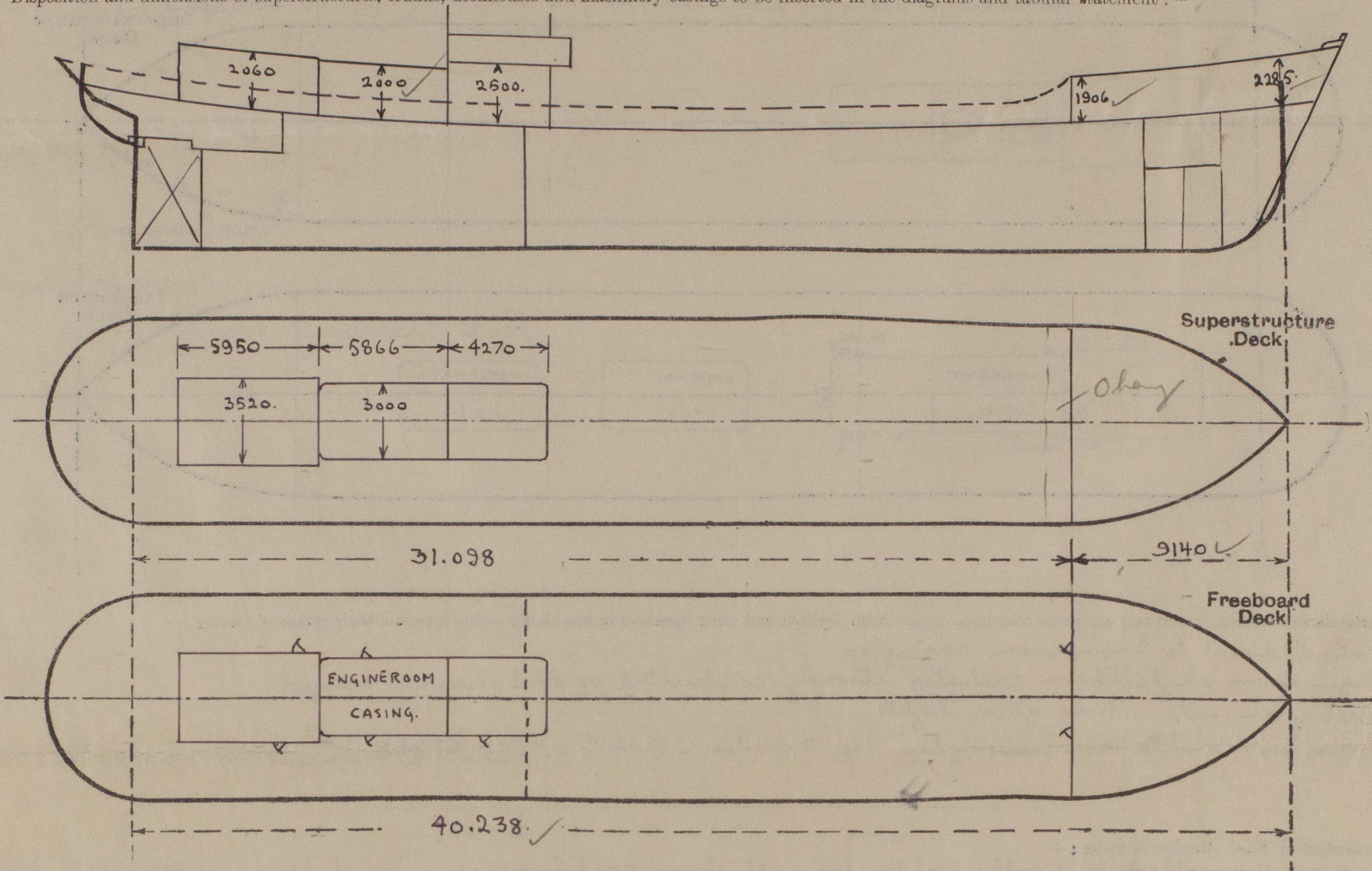
21 NOV 1946

Ship's Name *STEEL SC. M/S "OVAL" ex "PORT LEVEN"*Port of Survey *BERGEN*

Official Number

Surveyor's Signature *S. A. Eide*Nationality and Port of Registry *NORWEGIAN, BERGEN.*Date of Survey *18th. NOVEMBER 1946.*

Disposition and dimensions of superstructures, trunks, deckhouses and machinery casings to be inserted in the diagrams and tabular statement:—



Particulars of Superstructures, Trunks, Casings, Deckhouses.

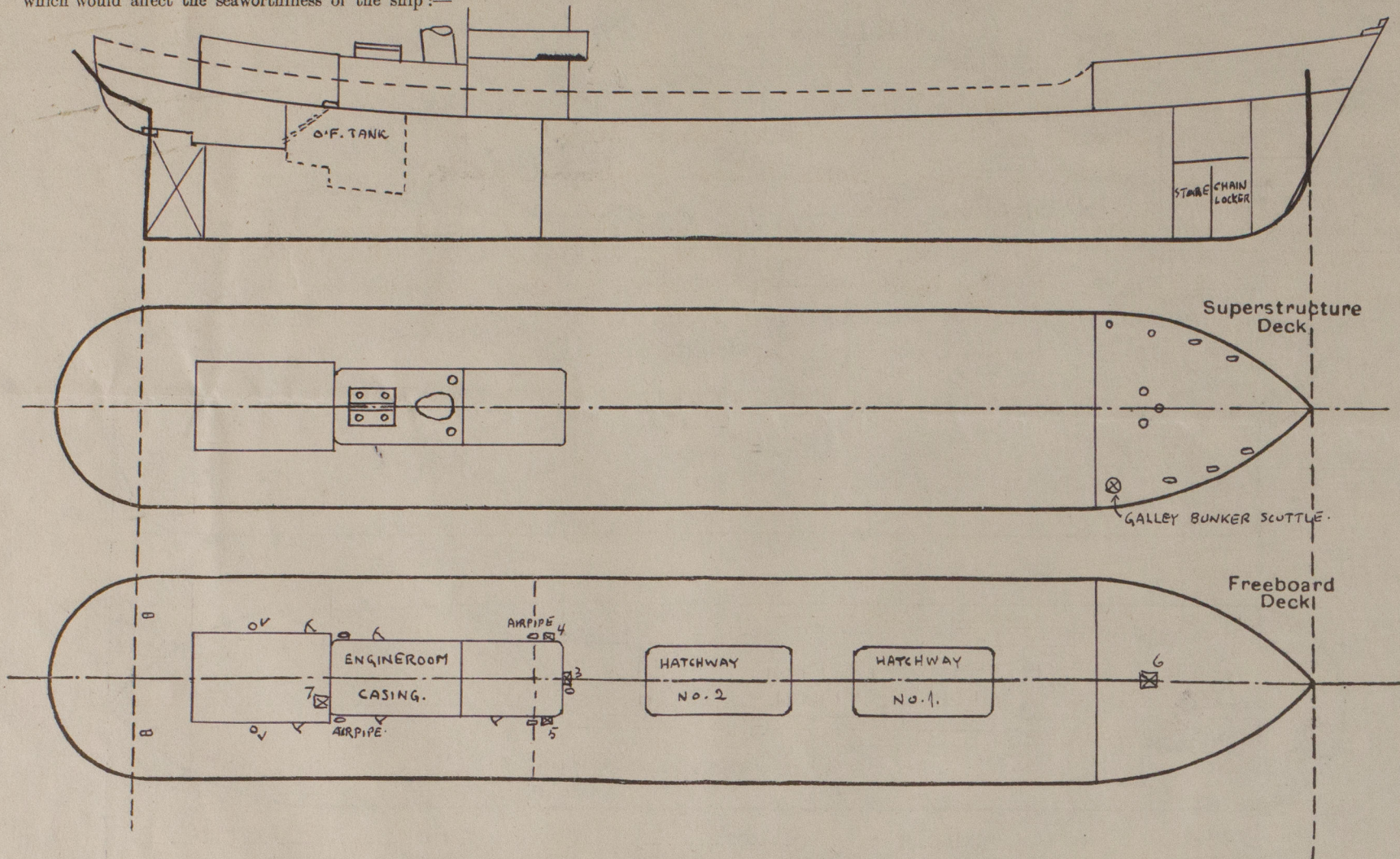
	Coaming	Plating	Stiffeners	Spacing	End Attachments of Stiffeners	Size of Openings	Height of Sills	Height of Casings
Poop Bulkhead ...	✓							
Raised Quarter Deck Bulkhead ...	✓							
Bridge, After Bulkhead ...	✓							
Bridge, Forward Bulkhead ...	✓							
Forecastle Bulkhead ...	7.5	7.5	90x76x8	750	STIFFENERS FULL HEIGHT.	TWO 1120 x 640	560	1906 To 2285
Trunk, Aft ...	✓							
DECKHOUSE ABOARD ENGINE ROOM								
Trunk, Forward ... CASING...	6	6	53x53x6	650	BRACKETS AT TOP.	ONE EACH SIDE 1400 x 550	610	2060
Exposed Machinery Casings on Freeboard or Raised Quarter Decks ...	7.5	7.5	100x75x8	750	NONE.	ONE EACH SIDE 1250 x 620	550	2000
Exposed Machinery Casings on Superstructure Decks ...							610	
Machinery Casings within Superstructures not fitted with Class I Closing Appliances ...								
FORWARD Deckhouses on Flush Deck Ships ...	6	6	75x63x7.5	650	NONE	ONE STARBOARD 1410 x 610	356	2500

Particulars of Closing Appliances (state if capable of being manipulated from both sides).

Poop Bulkhead ...	✓
Raised Quarter Deck Bulkhead ...	✓
Bridge, After Bulkhead ...	✓
Bridge, Forward Bulkhead ...	
Forecastle Bulkhead ...	HINGED STEEL DOOR operated from both sides
Exposed Machinery Casings on Freeboard or Raised Quarter Decks ...	HINGED STEEL DOOR operated from both sides
Exposed Machinery Casings on Superstructure Decks ...	
Machinery Casings within Superstructures not fitted with Class I Closing Appliances ...	
Deckhouses on Flush Deck Ships ...	HINGED WOOD DOORS

PARTICULARS OF PROTECTION TO OPENINGS, ETC.

The following diagrams should be used to indicate the positions of cargo and coaling hatchways, gangway, cargo and coaling ports, ventilators, companionways, etc., which would affect the seaworthiness of the ship :—



Particulars of fiddley, funnel and ventilator coamings, engine room skylight and other openings in machinery casing tops and their means of closing :—

Funnel direct to Engineer room casing top. ✓
 Engineer room skylight on casing top strongly constructed of steel, having hinged steel covers with strong glass lights. ✓
 Engineer room ventilators on casing top are 400 dia. x 9 thick x 1500 p height. ✓

Particulars of Flush Bunker Scuttles:—

One on fore-castle deck to galley coal bunker with strong cast iron frame and cover. of bayonet type with chain attachment.

Particulars of Companionways :—

Particulars of Ventilators in exposed positions on freeboard and superstructure decks :—

Freeboard deck:- 2- 200 M/m dia. \times 9 thick \times 910 height to accommodation aft. ✓
2- 160 M/m \times 90 gooseneck type 200 M/m height of C.I. to steering gear space aft.

Forecastle deck: - 1 - 300 M/M. dia. x 9 thick x 700 height to forecastle space. ✓
 2 - 200 M/M. " x 9 " x 700 " " store below deck. ✓
 1 - 150 M/M " mushroom type with screwdown rowl to forecastle space. ✓
 1 - 200 M/M " " " " " " " " " " " " ✓
 5 - 160 x 90 Goose-neck type 200 M/M. height of C.I. " " " " " " ✓
 All except mushroom type are fitted with wood plugs and canvas covers

Particulars of Air Pipes in exposed positions on freeboard, raised quarter, or superstructure decks :—

3 - 2" dia. x 2 M. height from hold
1 - 2" dia x 1 M. " " " A.P. tank.
1 - 2" " x 500 M/M " " " F.P. " "
2 - 2" " x 1.9 Meter " " " O.F. tanks. fitted with gauze wire

All except O.F. tank airpipes are fitted with wood plugs.

Particulars of Gangway Cargo and Coaling Ports:—

None

"Oval."

Particulars of Scuppers and Sanitary Discharge Pipes :—

Scuppers on freeboard deck cut in sheer strake above deck. ✓
No scuppers led overboard from spaces below freeboard deck. ✓
Sanitary discharges from W.C.'s and washplaces in forecabin space and deck house
led to ship's sides below freeboard deck and fitted with brass non-return valves
(W.C.'s and washplaces in the forecabin are surrounded by steel bulk heads). ✓

Particulars of Side Scuttles :—

None below freeboard deck.

Vertical distance of Sill of lowest Side Scuttle above top of keel

Particulars of Guard Rails :—

On Forecastle: - Stanchions 1050 high spaced 1500 apart with 3 rails.

Particulars of Gangways, Lifelines, etc. :-

~~None.~~ Fittings provided for lifelines from deckhouse to forecandle

Particulars of Freeing Arrangements.						
	Length of Bulwark	Height of Bulwark	Size of Freeing Ports	Number each side	Area each side	Rule area each side!
After Well	34 M. 28.17	950	600 x 350	9.	1.89 sq.m.	1.711
Forward Well						2.06 sq.m.

State position of each freeing port ... { After Well : } Forward port 4.3 m. from fore-castle bulkhead, remainder spaced
(F. and A. position and height above deck edge) { Forward Well : } equally 3.2 m.

State whether the freeing ports are fitted with shutters, bars, or rails, and give particulars of such:— *Shutters and 2 horizontal rails.*

Additional area where sheer is less than standard.

PARTICULARS OF PROTECTION TO OPENINGS, ETC.

		HATCHWAYS ON FREEBOARD AND SUPERSTRUCTURE DECKS.										
		To HOLD	To HOLD	To HOLD	To STORE	To ACCOM.						
Description of Hatchway		No. 1	No. 2	Nos. 3, 4 & 5	FORWARD.	AFT.						
Dimensions of Hatchway		3665x2800	3640x2800	450x450	1000x770	850x760						
COAMINGS	Height above Deck - Wood	640	640	230 m/m	230 m/m	230						
	Thickness { Sides ...	40	40	7.5	7.5	8						
	{ Ends ...	40	40	7.5	7.5	8						
	Stiffeners ...	150x10	150x10	✓	✓	✓						
Brackets, Stays AT. SIDE...		3	3	✓	✓	✓						
HATCH BEAMS	Number	2	2									
	Spacing	155	155									
	Scantling and Sketch ...	27x10	27x10	✓	✓	✓						
	Bearing Surface ...	as added	as added									
FORE AND AFTERS	Number	NONE	NONE									
	Spacing											
	Unsupported Lengths ...											
	Scantling* and Sketch ...			✓	✓	✓						
Bearing Surface												
HATCH COVERS	Material	WOOD	WOOD	W.T. HINGED	STEEL COVERS	OPEN						
	Thickness	2 1/2"	2 1/2"	4 - 5/8"	HINGED BOLTS.	HATCH						
	How fitted	F. & A.	F. & A.									
	Bearing Surface	2 1/2"	2 1/2"									
Spacing of Cleats		24"	24"									
Number of Tarpaulins		2	2	✓								

*Are wood fore and afters steel shod at all bearing surfaces? NO FORE AND AFTERS.

Are battens and wedges efficient and in good condition? YES.

Are tarpaulins in good condition and in accordance with rule requirements? YES.

Are lashings provided in accordance with rule requirements? YES.

Particulars of any special features :—

Endorsement at first survey and at surveys for renewal of Certificate :—

The fittings and appliances are in accordance with the particulars shown on this form (or as now modified) and are in good condition.



© 2020

Lloyd's Register Foundation