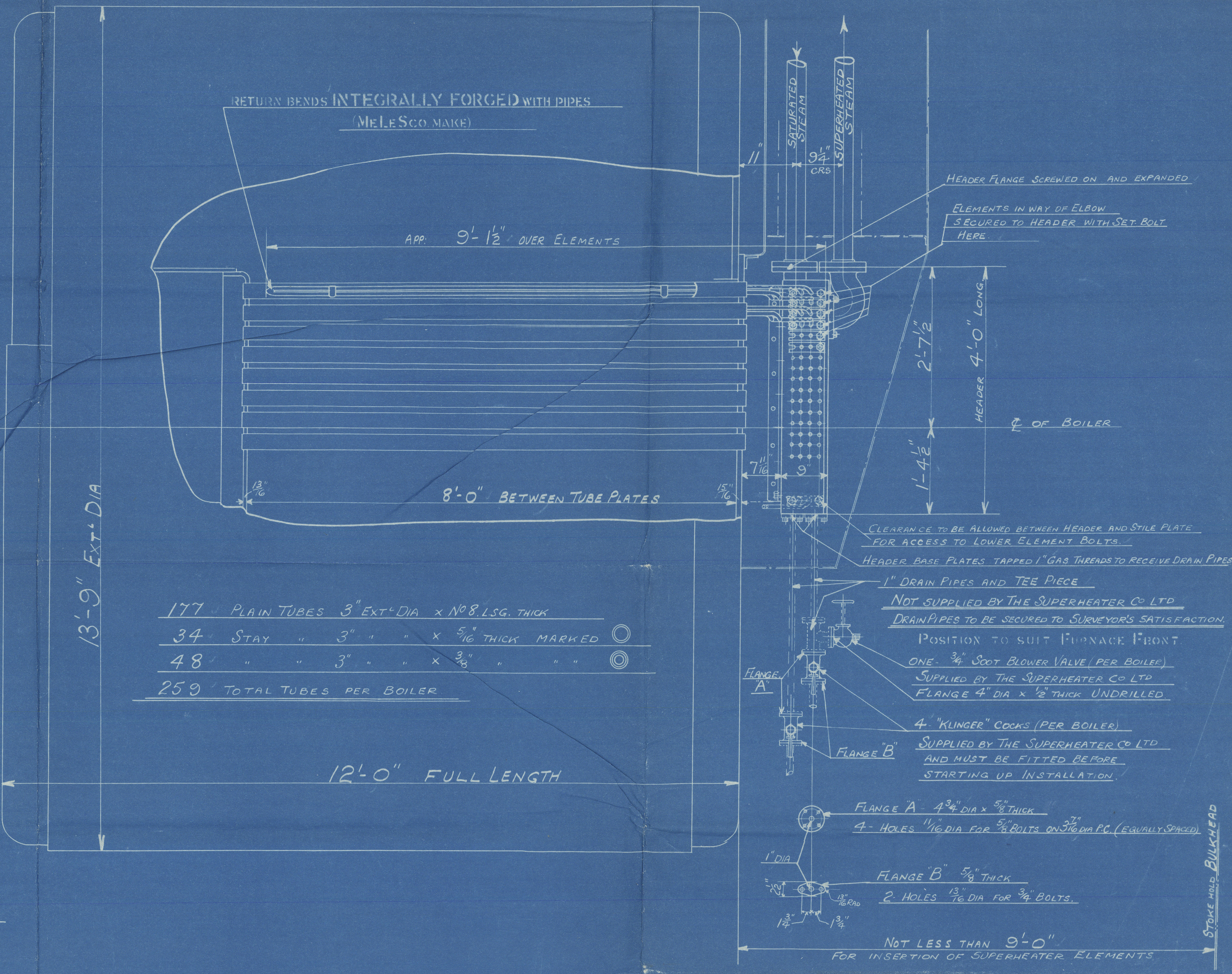
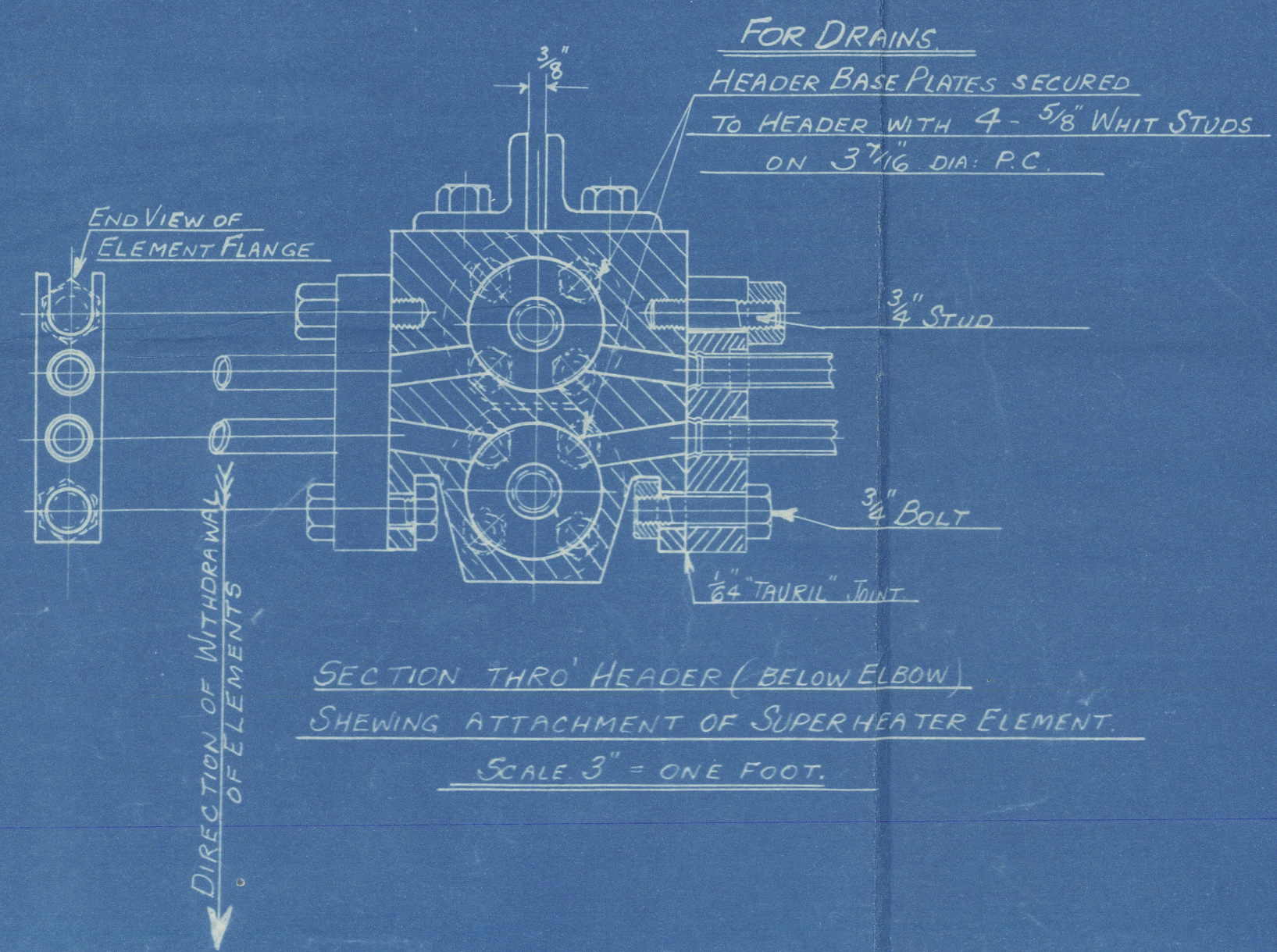
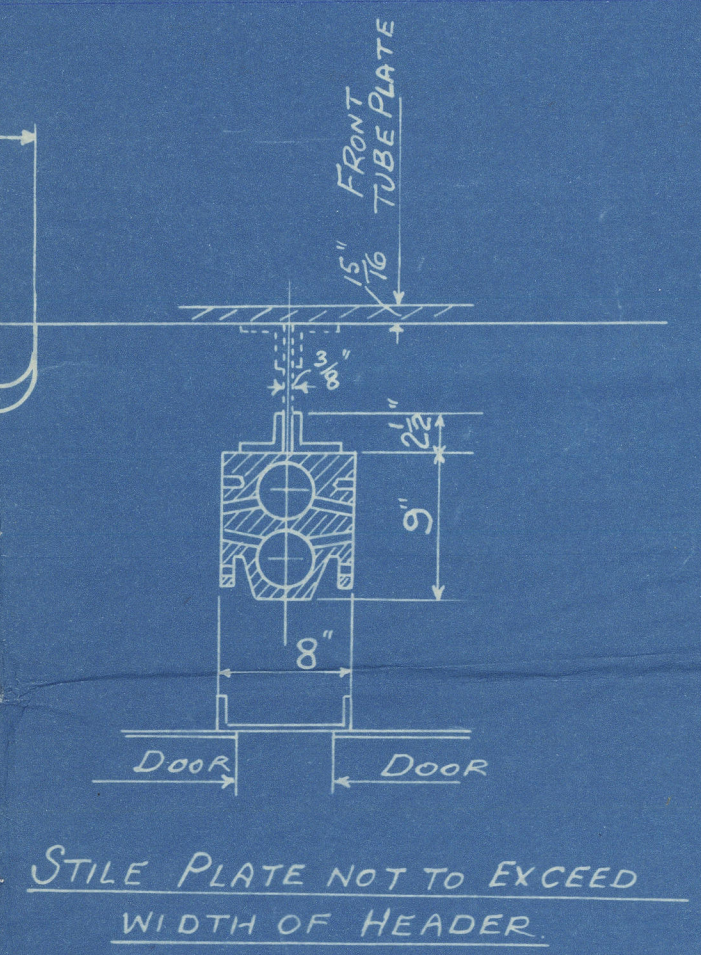
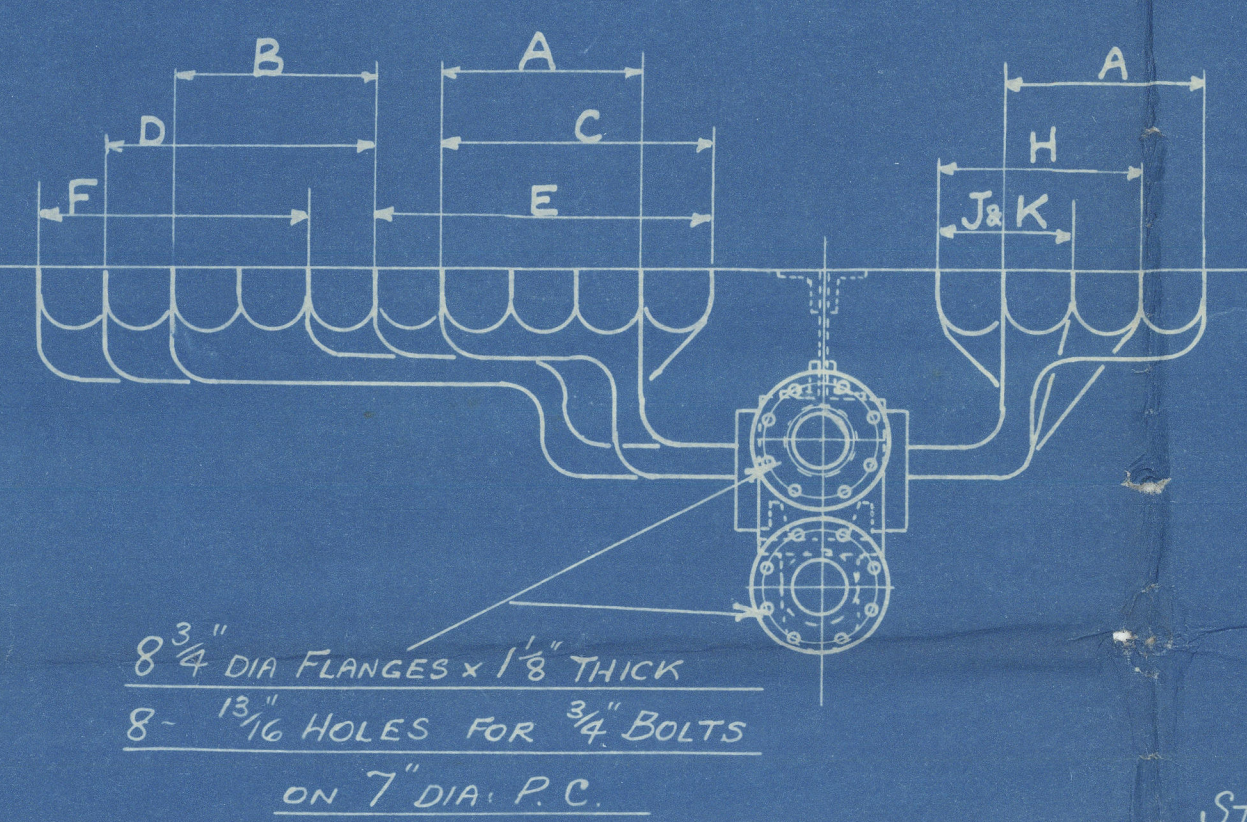
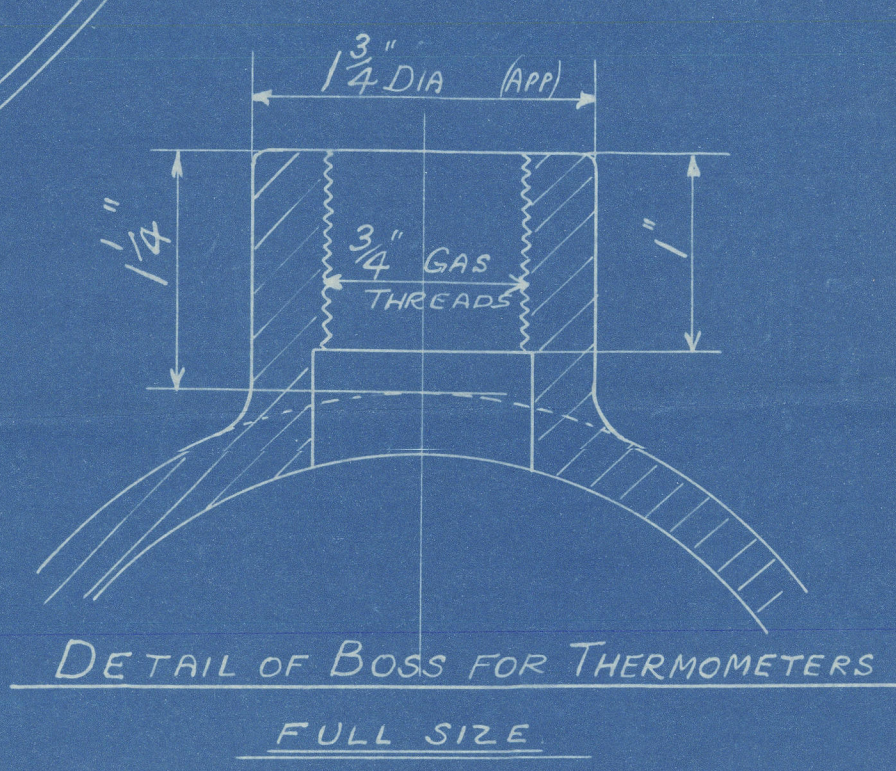
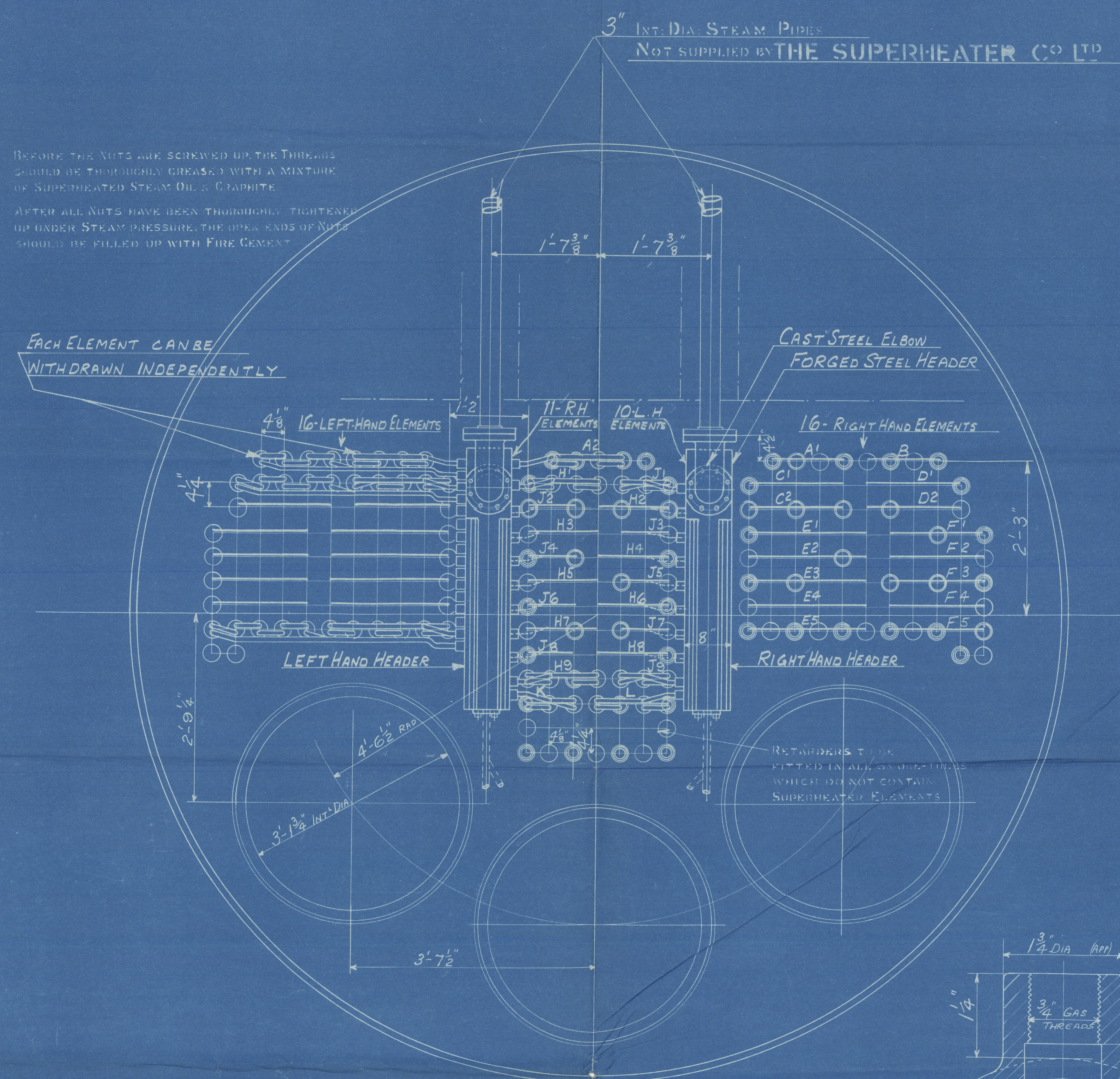


6 JUN 1936

BEFORE THE NUTS ARE SCREWED UP, THE THREADS SHOULD BE THOROUGHLY GREASED WITH A MIXTURE OF SUPERHEATED STEAM OIL & GRAPHITE.
AFTER ALL NUTS HAVE BEEN THOROUGHLY TIGHTENED UP UNDER STEAM PRESSURE, THE OPEN ENDS OF NUTS SHOULD BE FILLED UP WITH FIRE CEMENT.



- 177 PLAIN TUBES 3" EXT. DIA x NO 8 LSG. THICK
- 34 STAY " 3" " " x 5/16" THICK MARKED
- 48 " " 3" " " x 3/8" " " "
- 259 TOTAL TUBES PER BOILER

AUXILIARY BOILER

NUMBER OF BOILERS ONE PER SHIP (FORCED DRAUGHT - COAL OR OIL FIRED)

WORKING PRESSURE = 220 LBS PER SQ. IN. PER BOILER

GRATE AREA = 52 sq. ft.

HEATING SURFACE = 2024 sq. ft.

TO PASS LLOYDS SURVEY

TEST PRESSURE 660 LBS PER SQ. IN.

THE DESIGN SHOWN ON THIS DRAWING IS PROTECTED BY PATENTS OWNED AND CONTROLLED BY THE SUPERHEATER CO LTD BUSH HOUSE LONDON W.C.2

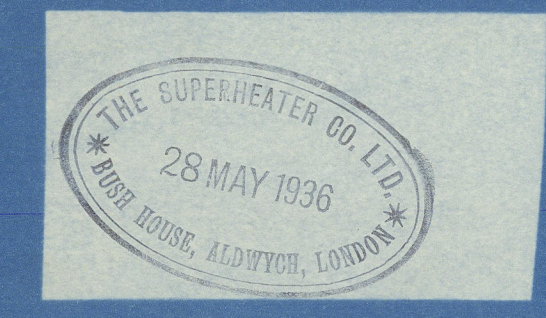
TITLE ARRANGEMENT OF SUPERHEATER R.B. TYPE

REF. CNO. 118 10478 23/1/35

DRAWING NOS. MN 10600

JOHN READHEAD & SONS LTD

ENGINE N^{os} 507 & 508



SCALE
1" = ONE FOOT

DATE 26/11/35

8/1/36

MESSRS J READHEAD & SONS

YARD NOS

507 & 508

W997-0042

ARRANGEMENT OF

SUPERHEATERS

AUXILIARY BOILER

S/S. Baltistan

NEWCASTLE ON TYNE.

Report No. 95095



© 2020

Lloyd's Register
Foundation