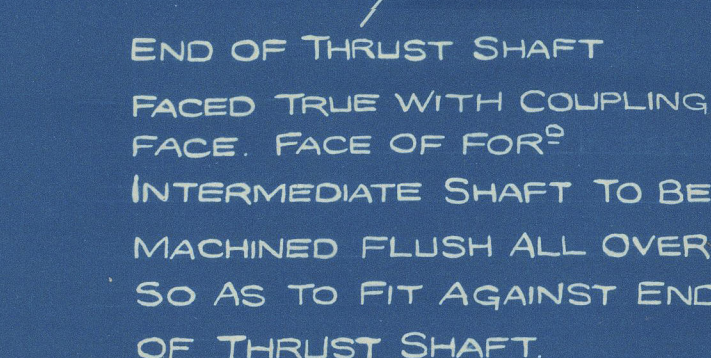
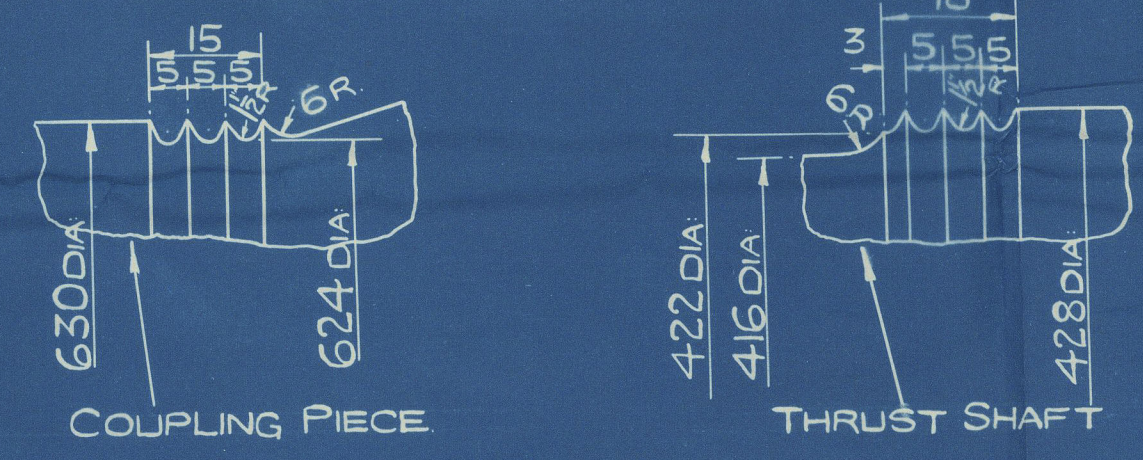


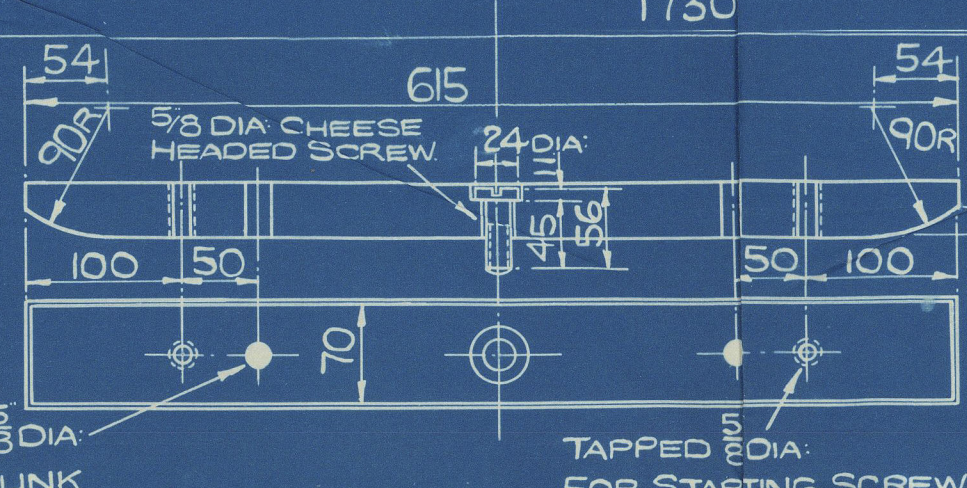
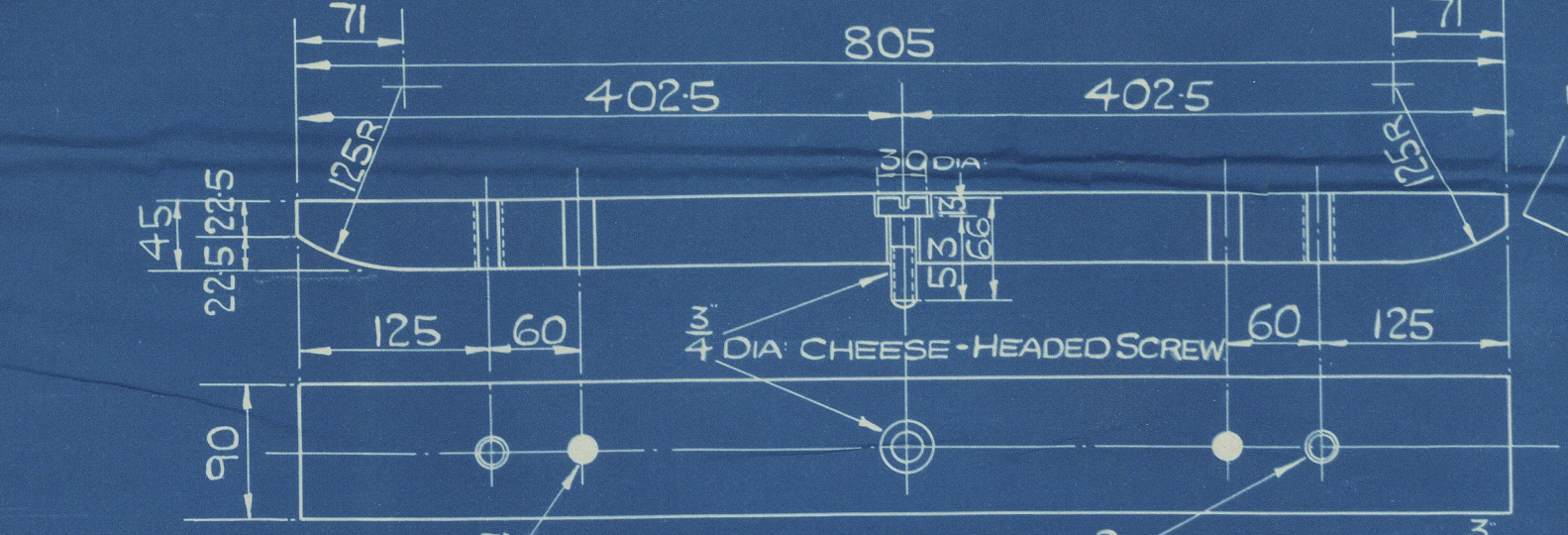
TUNNEL SHAFT BOLTS & NUTS
SUPPLIED & FITTED BY MESSRS
JOHN REDHEAD & SON.
BOLT HOLES IN COUPLING PIECE
TO BE DRILLED 3" DIA. BY
MESSRS SHWR LTO. & REAMERED
OUT TO SUIT TUNNEL SHAFT BY
MESSRS REDHEAD.



VIEW LOOKING FOR² ON COUPLING PIECE AFT FLANGE

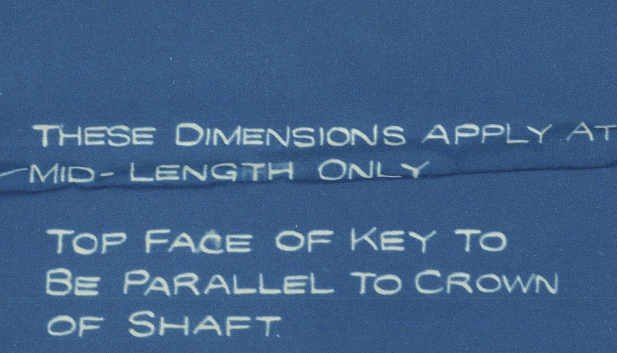


DETAIL OF OIL THROWER SERRATIONS



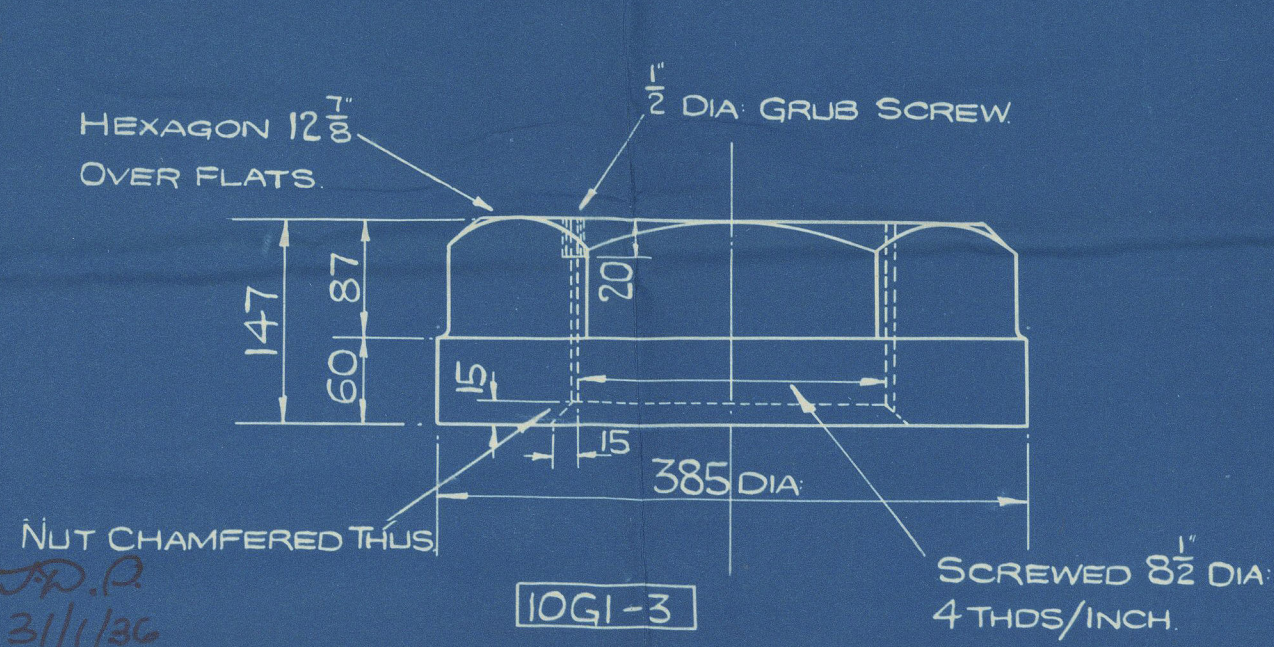
DETAIL OF MAIN WHEEL KEY

VIEW LOOKING AFT ON THRUST SHAFT COUPLING FLANGE



TO LLOYDS SURVEY.

DETAIL OF COUPLING BOLTS & NUTS HALF FULL SIZE



DETAIL OF THRUST SHAFT NUT.

DETAIL OF PACKING RING
(IN HALVES)
SCALE:- FULL SIZE.

SYMBOL N ^o WORK ^o		DESCRIPTION	MAT ^l STEEL	REMARKS	EACH N ^o REQ ^d	
SPARE					WORKING	SPARE
9G-1		MAIN WHEEL SHAFT	SMF1 STEEL	ORD ^d OUT	1	
-2		PACKING RING (IN HALVES)	M S	" "	1	
-3		KEY FOR MAIN WHEEL SHAFT	"	STOCK MAT ^l	1	
-5	29G-5	WHEEL SHAFT COUPLING BOLTS	"	" BAR	18	1
-6	-6	NUTS FOR " "	" "	" "	18	1
10G-1		MAIN THRUST SHAFT	SMF1 STEEL	ORD ^d OUT	1	
-2		COUPLING PIECE	STEEL	" "	1	
-3		NUT FOR THRUST SHAFT	M S	" "	1	
-4		KEY FOR THRUST SHAFT	SMF1 STEEL	" "	1	

Nº	DATE
1496	24-1-36 <i>AB</i>
1526	24-1-36 <i>AB</i>

© 2020
Lloyd's Register
Foundation

4385

SWAN, HUNTER, &
WIGHAM RICHARDSON LTD
ENGINEERING DEPARTMENT
NEPTUNE WORKS.
NEWCASTLE - ON - TYNE.
DATE. 1

THRUST SHAFT, WHEEL SHAFT & CONE COUPLING.

SCALES:- 1:5 & AS MARKED.

W997-0046

SWAN, HUNTER, & WIGHAM
RICHARDSON LTD.

ENGINE NOS. 1496 & 1526

JOHN READHEAD & SONS LTD.

SHIPS Nos 507 & 508

507 Armanistan

508 Baltistan

THRUST SHAFT

Rpt No 95095

London copy

(14)

G

152

DRG No 4385

N/c LTR 27/1/36



© 2020

Lloyd's Register
Foundation