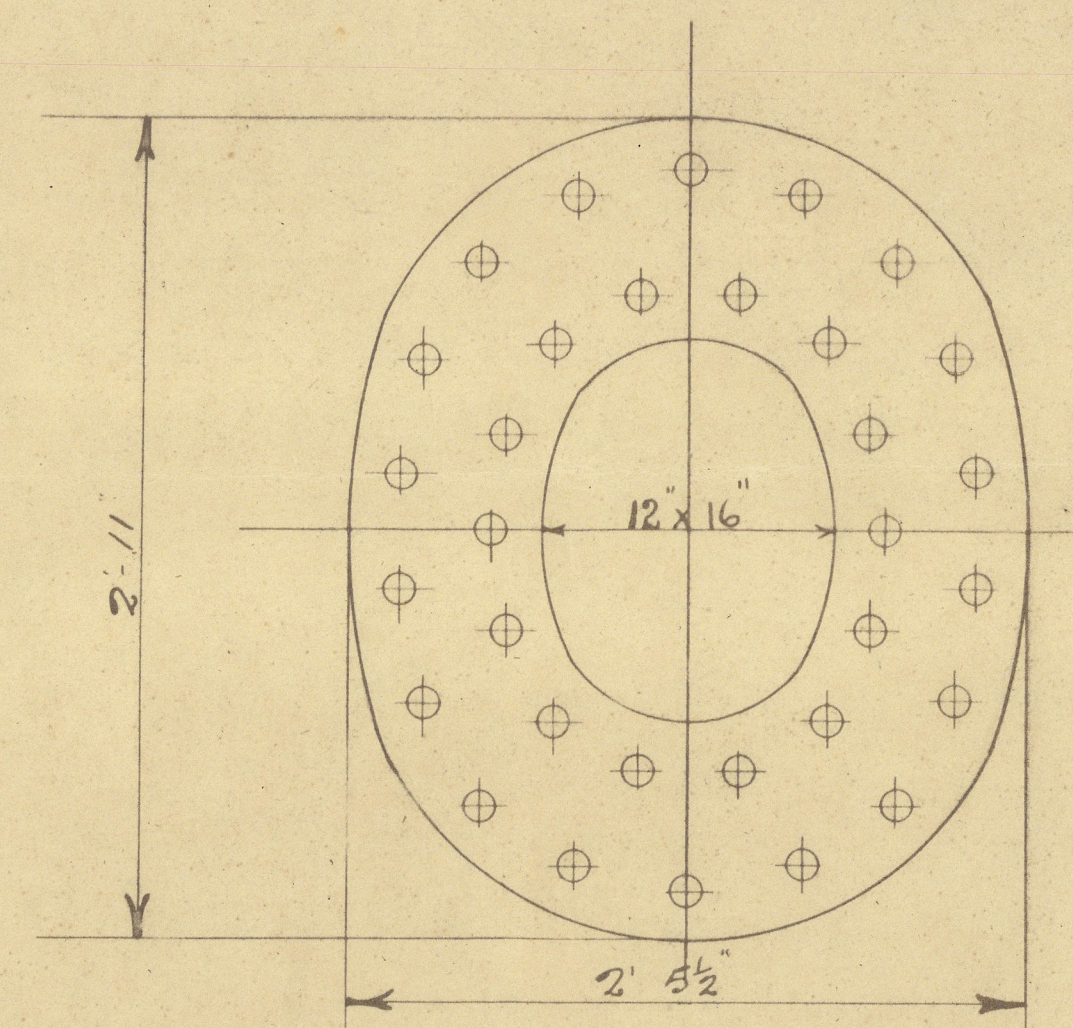


6/5/08

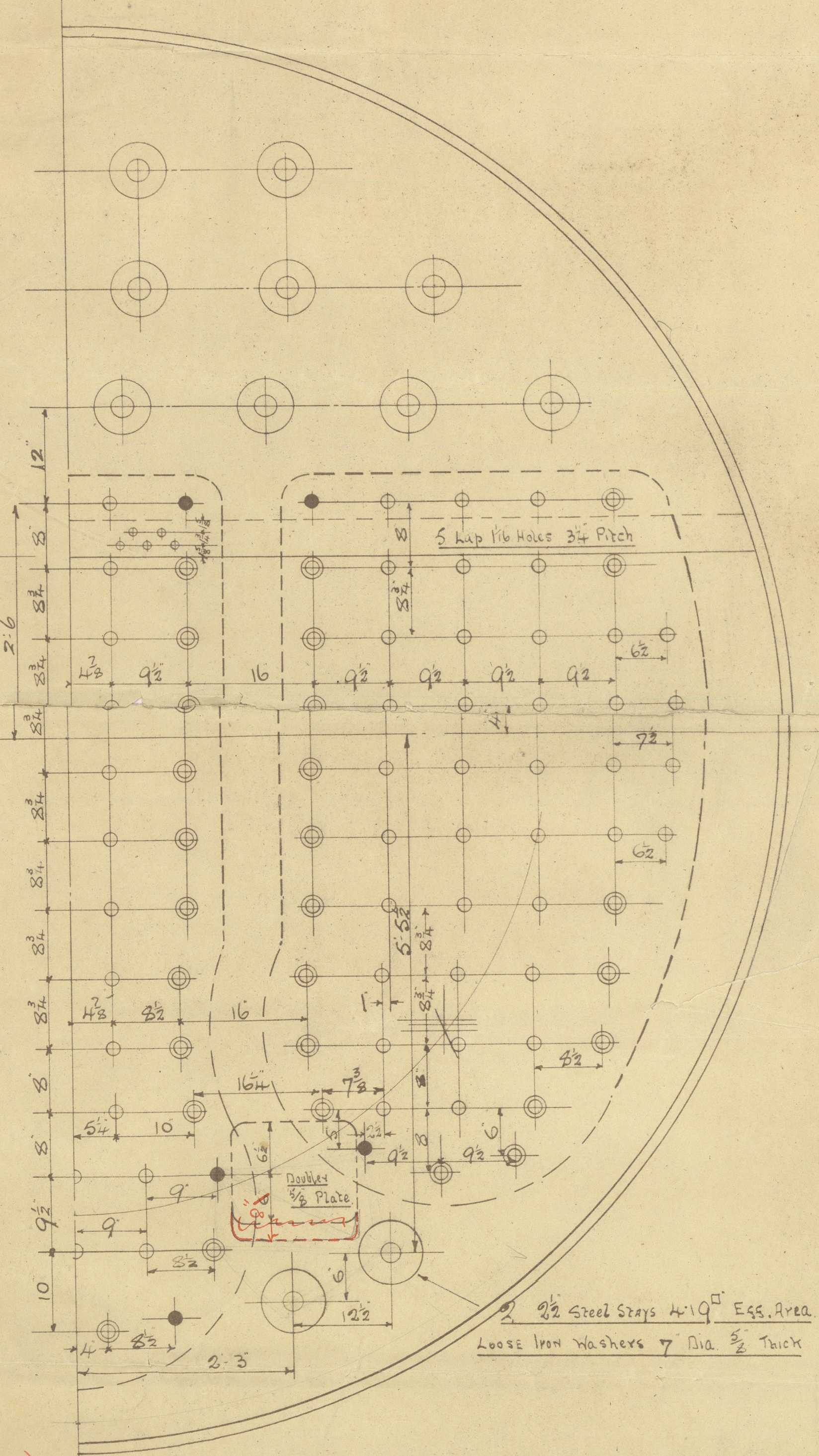
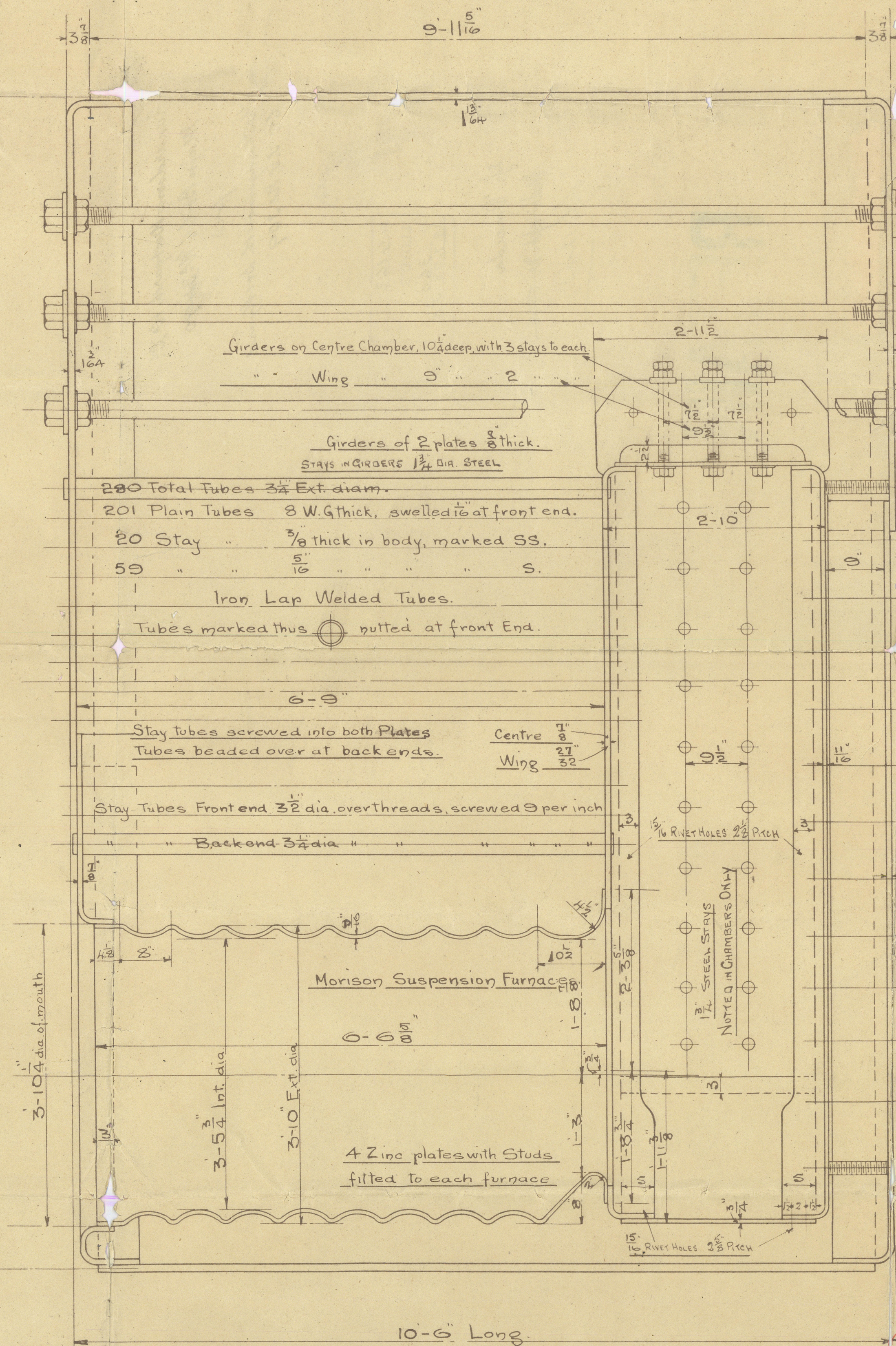
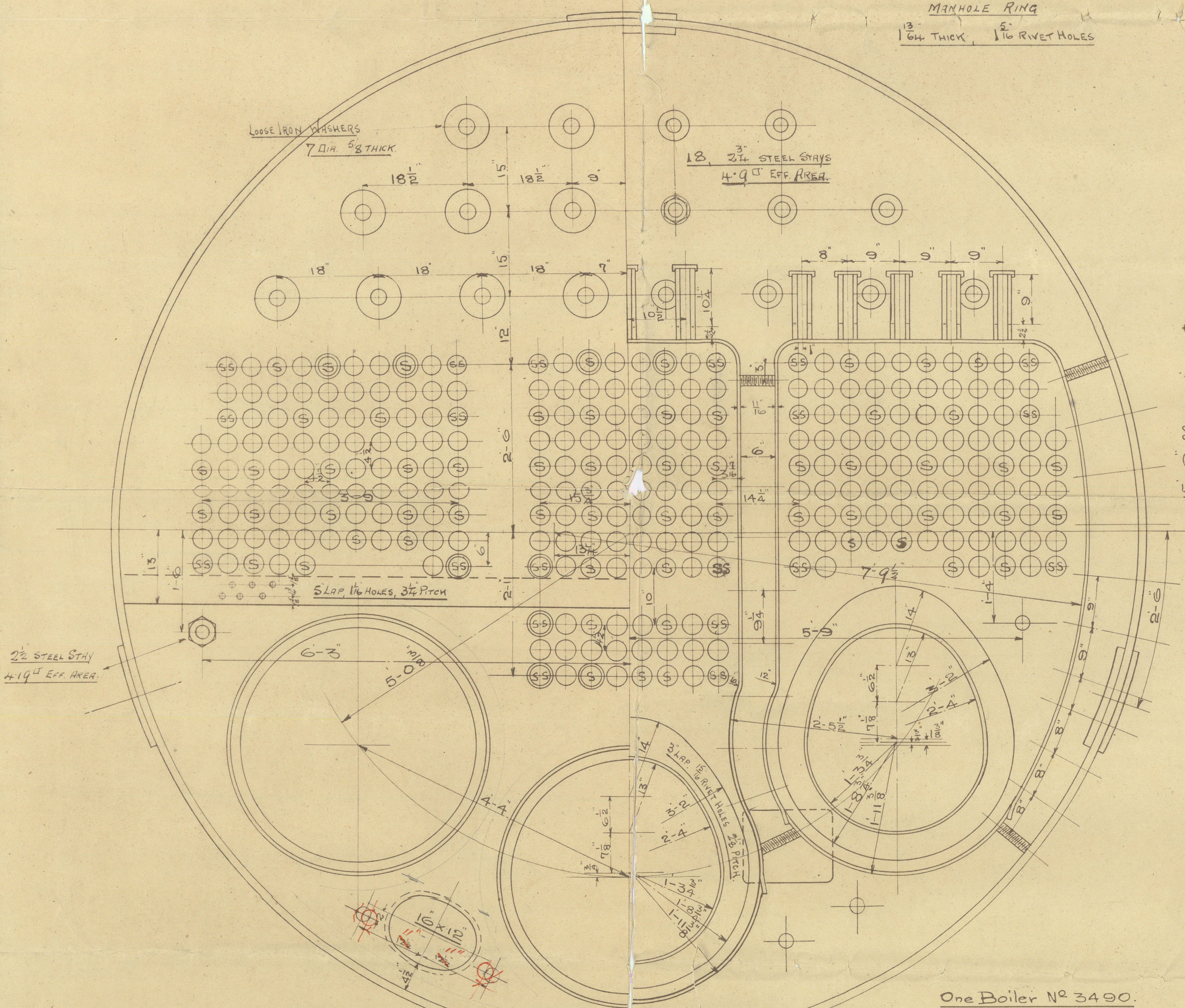
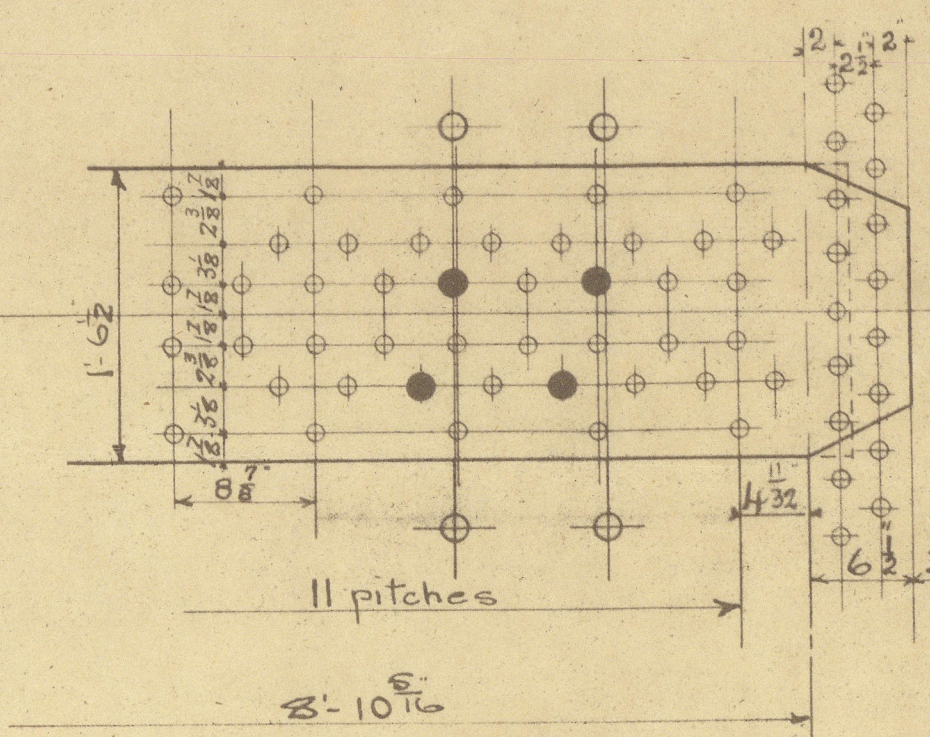
Heating Surface	
Tubes	1607
Furnaces	126
Chambers	265
Iron Tube plate	35
Total	2033



LONGITUDINAL SEAMS 1 1/2" RIVETS, 1 1/2" HOLES, 8 1/2" PITCH

CIRCULAR - 1 1/4 - 1 1/2 - 2 1/2

DOUBLE BUTT STRAPS, OUTER 1", INNER 1 3/4" THICK



To Pass Lloyds Survey for 180 lbs. working pressure.

Tensile Strength of Shells, Butts, Manhole Rings 28 1/2 to 32 tons.

" " of all other plate 26 to 30 tons.

" " Longitudinal stays 28 to 32 tons.

" " Screw " 26 to 30 tons.

70/25/4/08

28/2/08

BOILER NO 3490

FOR THE LANCHESTER DOCKYARD CO'S S.S.309.

Scale 1 inch = 1 Foot.

7.7.08
6.5.08



Stays in Chamber Backs

2 Steel stays 2 7/8" 19" Eff. Area. Noted at Both Ends

1 1/2 - - - 2 1/2 - - - - -

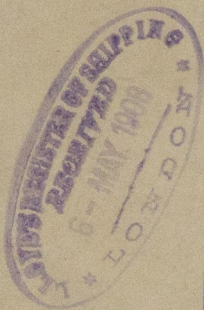
1 3/4 - - - 2 09 - - - Noted in Chambers Only

Screw Stays 11 Threads per inch.



Richardsons, Westgarth & Co. Ltd.
Main Boiler No. 3490

for
The Trangemouth Dockyard
600 S.S. No. 309



No. 4163
LLOYD'S TEST
360 lb.
29.7.08 J.K.

W996-0314

S/o 'Onaida'

Mdb rft No. 5548

Lb 12437.

RETAIN



© 2020

Lloyd's Register
Foundation