

MIDSHIP SECTION

S. S. N° 630.

DIMENSIONS 423'-4" B. P. x 55'-9" MLD. x 56'-0" EXT. x 30'-6" MLD. TO UPPER DECK.

To CLASS 100 A1 AT LLOYDS SPECIAL SURVEY

SCALE 1/2 INCH = ONE FOOT.

BRIDGE 123'-0" x 8'-0"

13.4.11
27.4.11
30.5.11
28.6.11
9.8.11
14.8.11
21.8.11
26.2.12

REQUIREMENTS OF OWNERS OVER LLOYDS

PROPELLER POST 11 1/2" x 7 1/2". RUDDER POST 12" x 8". RUDDER STOCK 10 1/2" DIA.
FLOORS FOR 5 SPACES AFT OF B ROOM INCREASED 1/2". UNDER BULBS IN 2ND 05 FOR 5 SPACES FOR OF B ROOM INCREASED 1/10
AND TANK DIVISIONS INCREASED 1/10 EXCEPT BOILER ROOM DIVISIONS.
TANK TOP PLATING FLOORS INTERCOSTALS & ANGLES UNDER BOILERS TO BE OF IRON
TWEEN DECK BULKHEADS IN NO. 1 & 2 BULKHEADS TO BE DISPOSED WITH BULKHEADS & KEEL
THE FORWARD AND AFT PEAK BULKHEADS TO BE 10" HEAVIER
6" x 6" DECK ANGLE AT SIDES & ROUND ENDS OF UPPER DECK HATCHES
TUNNEL TOP UNDER HATCHES 75
DECK IN WELLS TO BE OF STEEL OF IRON THICKNESS, OR DISTRIBUTION OF
EXTRA WEIGHT TO SUIT OWNERS

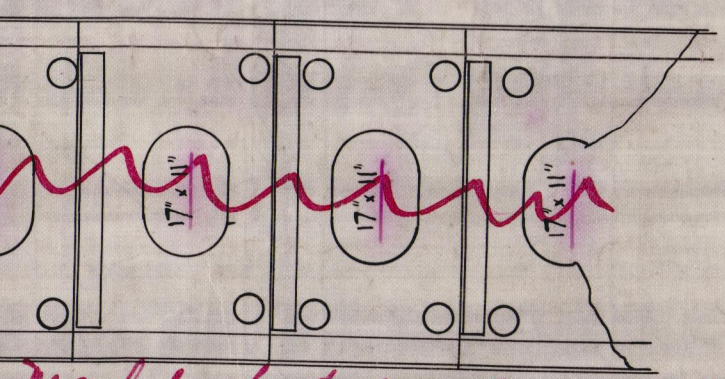
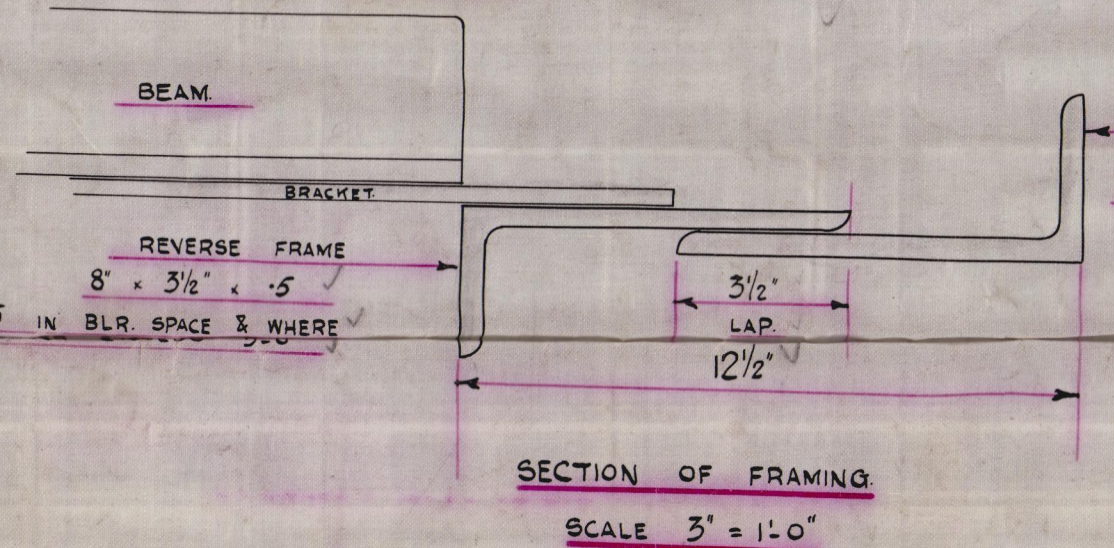
EQUIPMENT NUMERAL

LONGITUDINAL NUMBER = 36483.75
BRIDGE FLS
35-66 + 123.0 + 41.0 = 199.66 x 8 x 3/4 = 1197.96
42.75 42.11 x 507.91
HOUSES 90 x 7.75 x 1/2 = 350.46
90.5
EQUIPMENT NUMERAL = 38030.46
38081.89

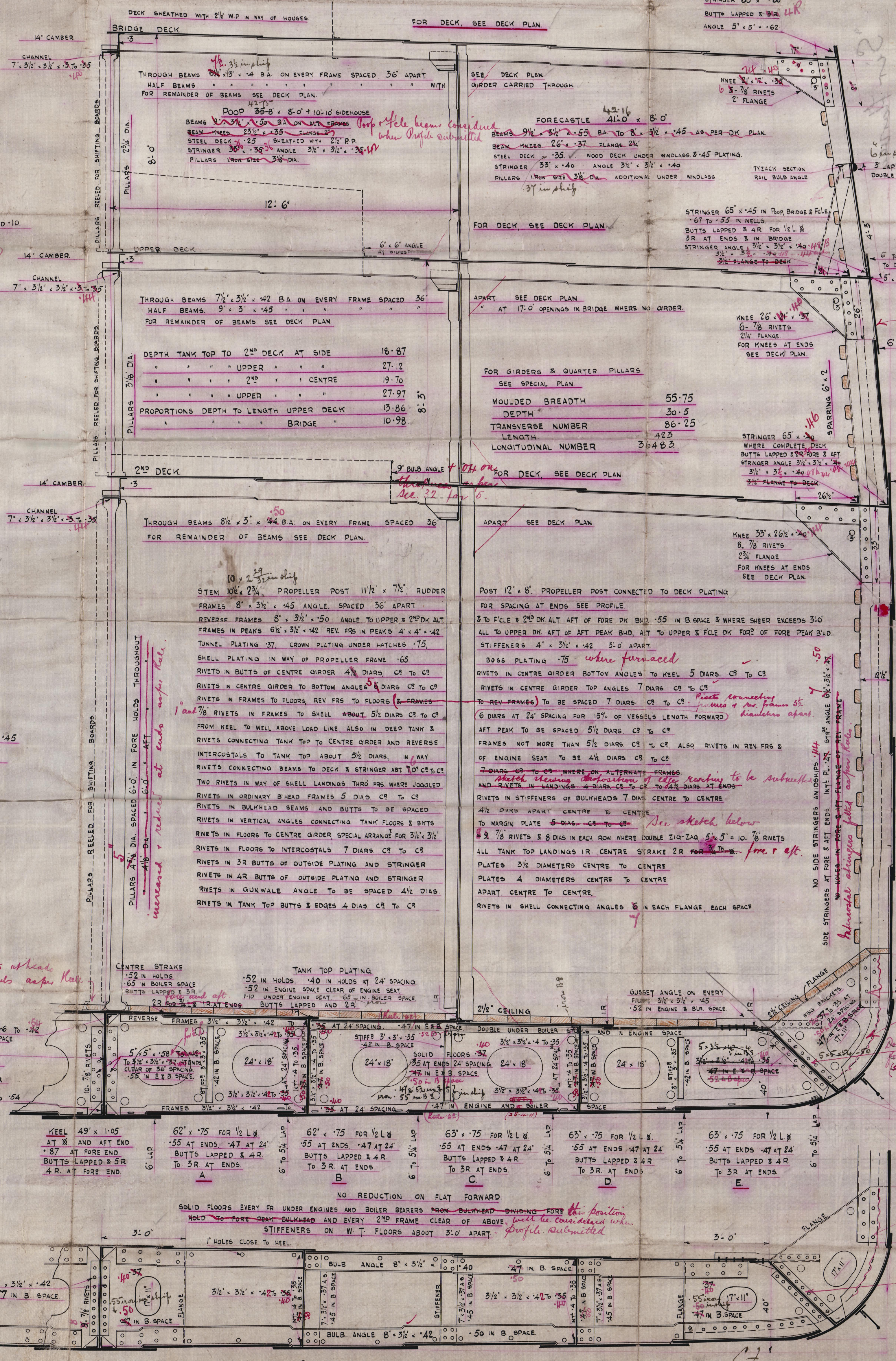
EQUIPMENT

2 BOWER ANCHORS 5 1/2" CWTs EX. STOCK
1 BOWER ANCHOR 46 1/2" " " "
1 STREAM ANCHOR 19 " " "
1 KEDGE ANCHOR 8 " " "
270 FATHOMS 2 1/2" STUD CHAIN CABLE 720-3-4
15 1/2" STOWAGE CABLES 1" R. STEEL WIRE
120 " 15" TOWLINE OR 5 1/4" STEEL WIRE
2 HARPS @ 8' 90 FATHOMS OR 2 1/2" STEEL WIRE
2 " 7' 90 " 2 1/2"

Owners consent to
steel wire. (25.11.11)



Manholes for purposes of accessibility only
Sketch of manholes in
CENTRE GIRDER BEYOND 24' L



40 AT FOLE 35 AT POOP
70 AT BRIDGE
BUTTS LAPPED & 3R AT BRIDGE
2R AT POOP & FOLE

66 AT BRIDGE
40 AT FOLE 35 AT POOP
BUTTS LAPPED & 3R AT BRIDGE
2R AT POOP & FORECASTLE
BULKWARK 3/16" STEEL
BUTTS LAPPED & 1R

45' x .95 TO .47
65 TO .47 IN DIRECTIONS
BUTTS LAPPED & 3R AT BRIDGE
POOP & FOLE
BUTTS LAPPED & 3R IN WELLS
Double steel for 1/2 L
7 Bridge. See profile

64' x .78 FOR 1/2 L
47 AT 24' SPACING
BUTTS LAPPED & 4R
TO 3R AT ENDS

64' x .78 FOR 1/2 L
47 AT ENDS
47 AT 24' SPACING
BUTTS LAPPED & 4R
TO 3R AT ENDS

64' x .78 FOR 1/2 L
47 AT ENDS
47 AT 24' SPACING
BUTTS LAPPED & 4R
TO 3R AT ENDS

64' x .78 FOR 1/2 L
47 AT ENDS
47 AT 24' SPACING
BUTTS LAPPED & 4R
TO 3R AT ENDS

64' x .78 FOR 1/2 L
47 AT ENDS
47 AT 24' SPACING
BUTTS LAPPED & 4R
TO 3R AT ENDS

64' x .78 FOR 1/2 L
47 AT ENDS
47 AT 24' SPACING
BUTTS LAPPED & 4R
TO 3R AT ENDS

64' x .78 FOR 1/2 L
47 AT ENDS
47 AT 24' SPACING
BUTTS LAPPED & 4R
TO 3R AT ENDS

64' x .78 FOR 1/2 L
47 AT ENDS
47 AT 24' SPACING
BUTTS LAPPED & 4R
TO 3R AT ENDS

64' x .78 FOR 1/2 L
47 AT ENDS
47 AT 24' SPACING
BUTTS LAPPED & 4R
TO 3R AT ENDS

64' x .78 FOR 1/2 L
47 AT ENDS
47 AT 24' SPACING
BUTTS LAPPED & 4R
TO 3R AT ENDS

Russell No 630
Midship Section

Sp. Vestalia
Greenock Report No 16236



RETAIL

RETAIL

Dimensions 1800 x 800 x 1000
No. 1000
No. 1000
No. 1000

"Sir Harvey
Adamson"

Rpt No Gls. 34629

W996-0265



© 2020
Lloyd's Register
Foundation