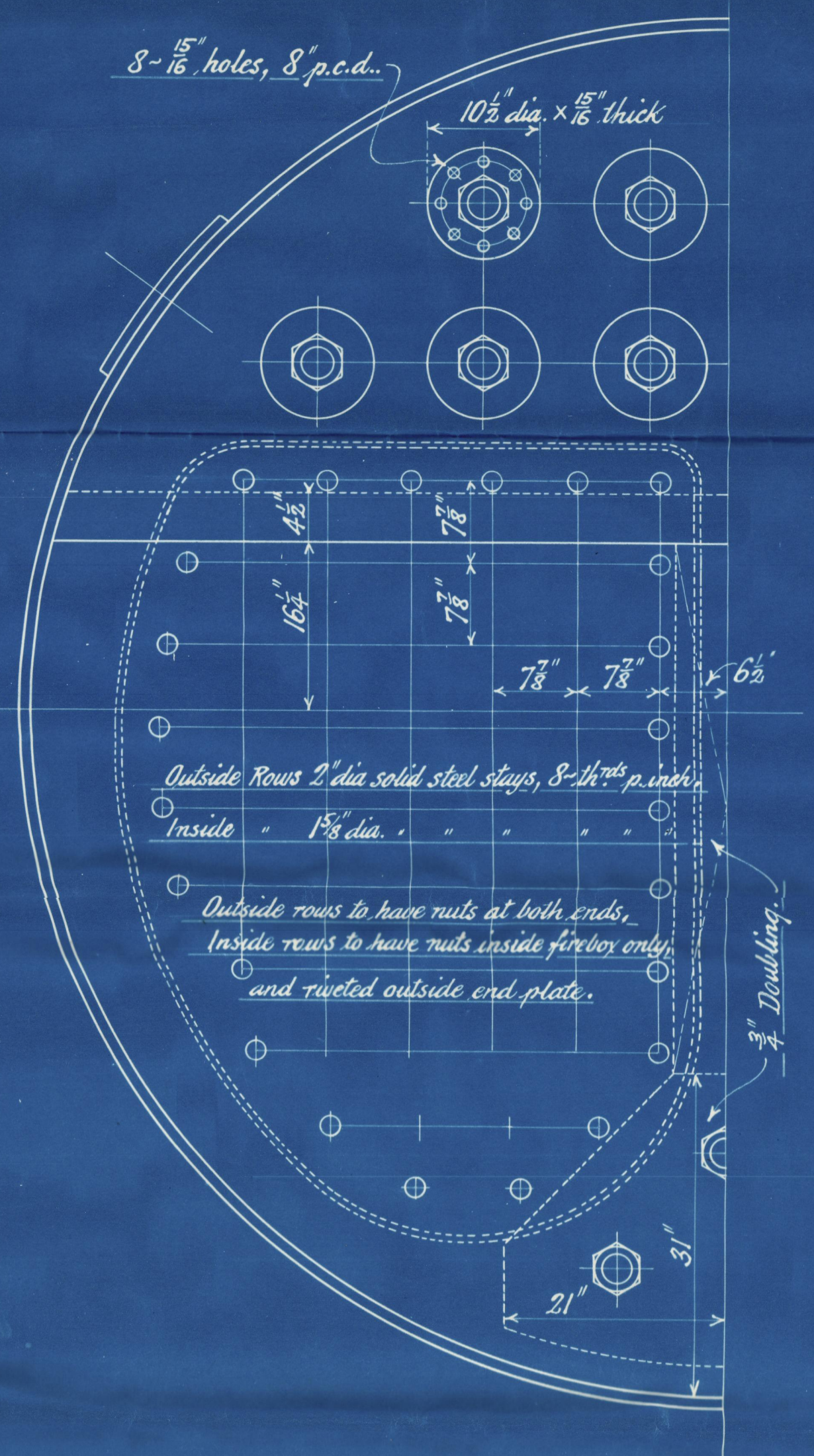
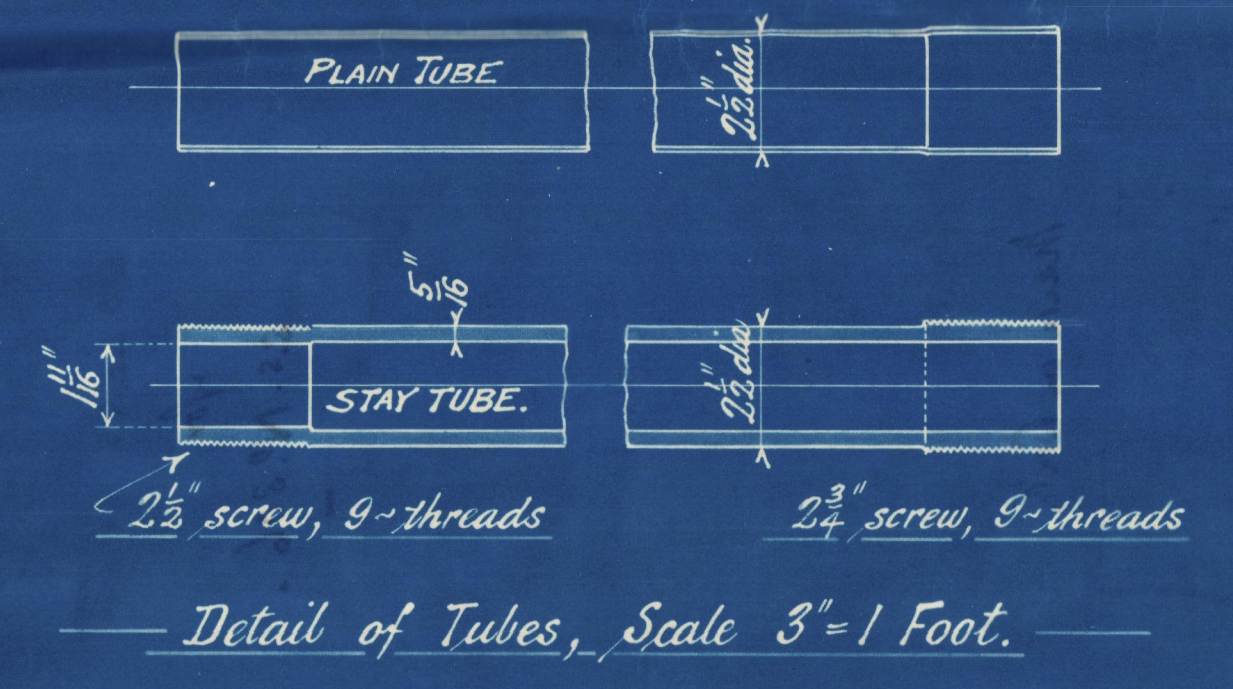
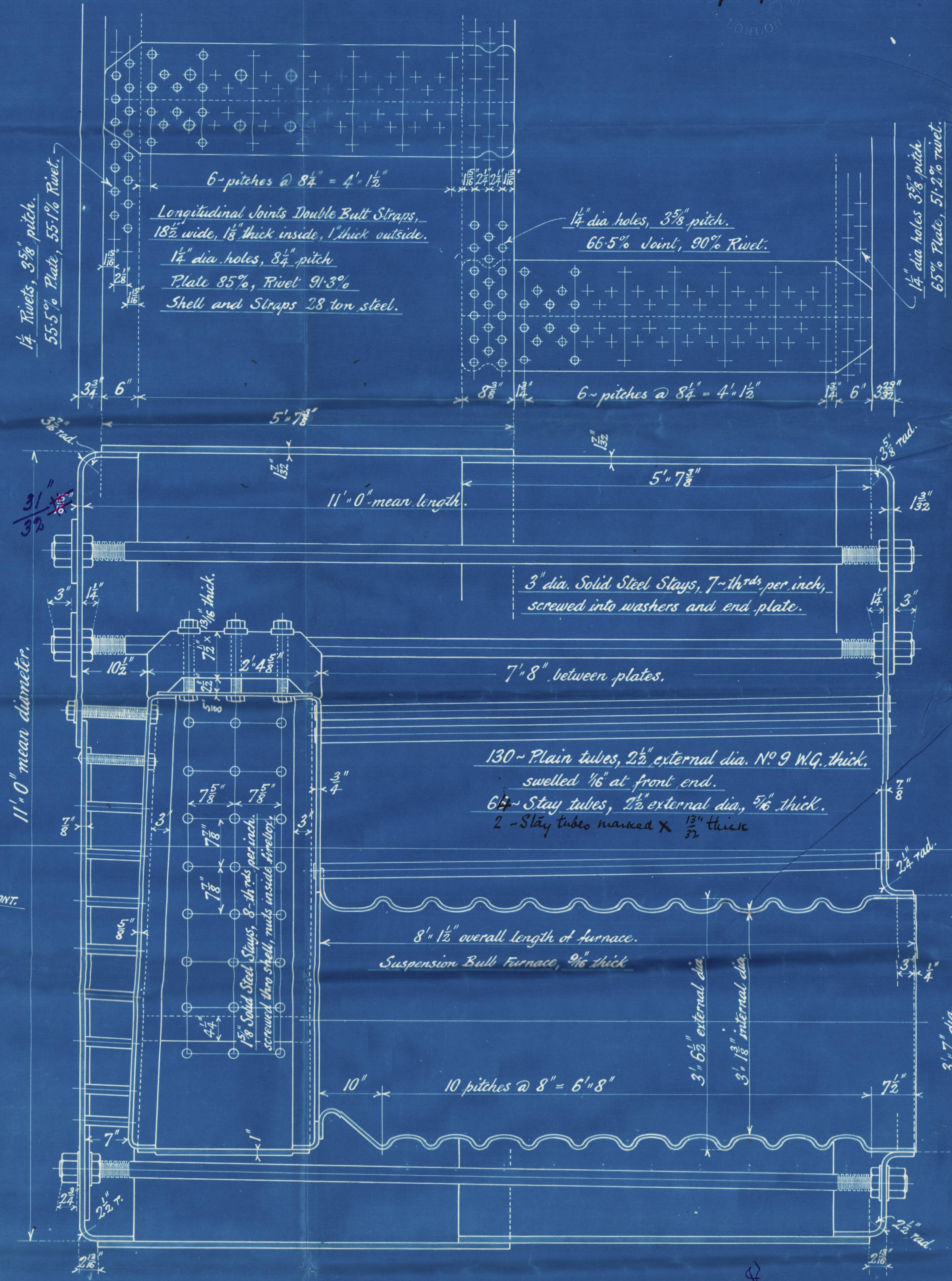
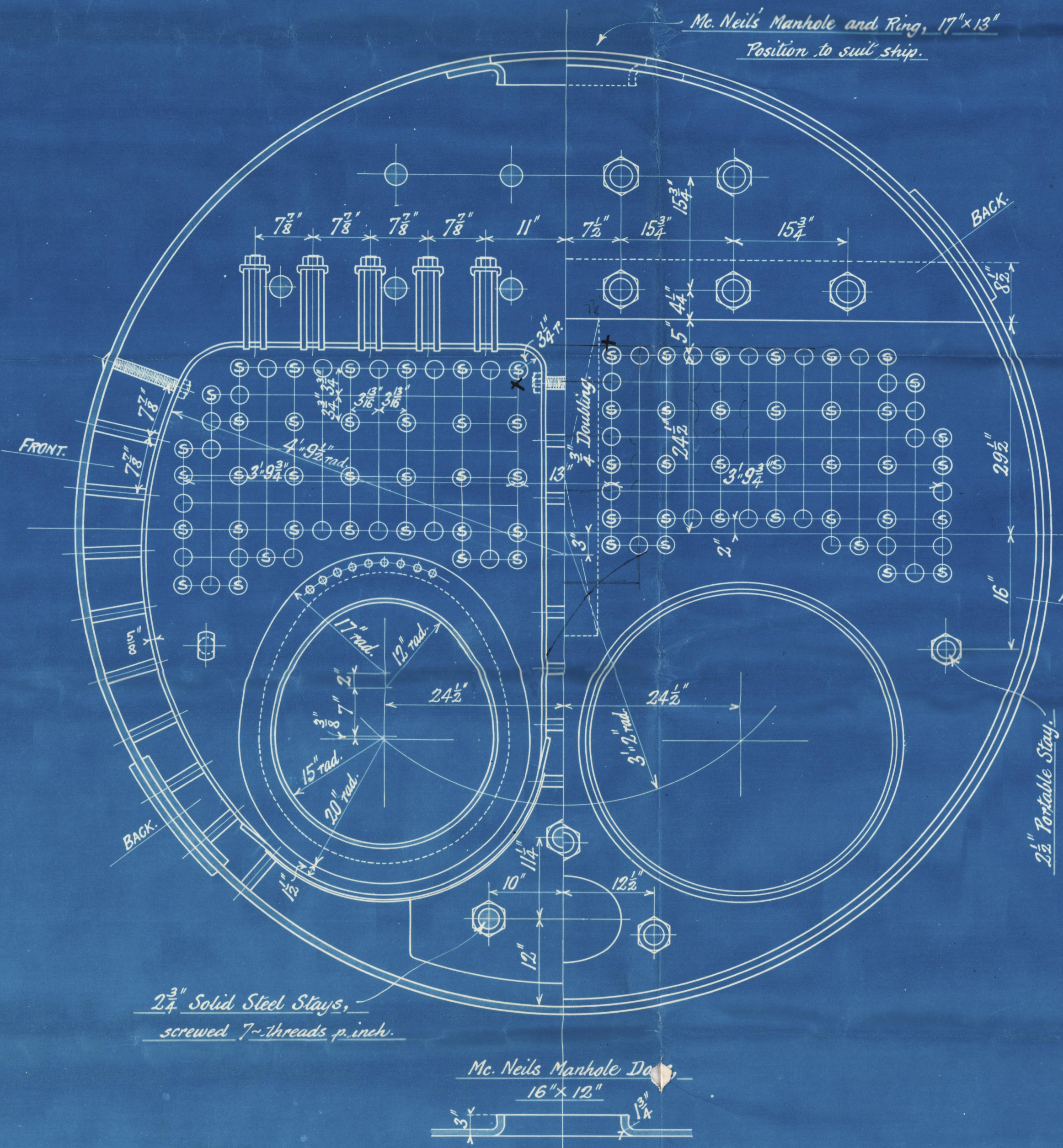


3/12/13

HEATING SURFACE.	
Tubes.	
Combustion Chambers.	
Furnaces.	
Total in 1-Boiler.	
Grate Area. (5' 6" Bars)	36.5



2~ Boilers thus. Boilers to be of Steel throughout except Tubes and Portable Stays which are Iron.

To Board of Trade and Lloyds requirements for 215 lbs. W.P.

3/12/13

3.12.13

MAIN BOILERS No 585,
Eng's No 419.

SCALE 1"=1 FOOT.

AS J. INGLIS LTD.

BOILERS N^o. 585

for

S.S. N^o. 306.

W996-0262

215 LB'S W.P.

Incl
93



To Sir Hawey Adams

GLASGOW REPORT No 34629.

Made in Bailey
N^o. 585

N^o. 12871
LLOYDS TEST
430 LB'S
17-9-14 J. A. W.



© 2020

Lloyd's Register
Foundation