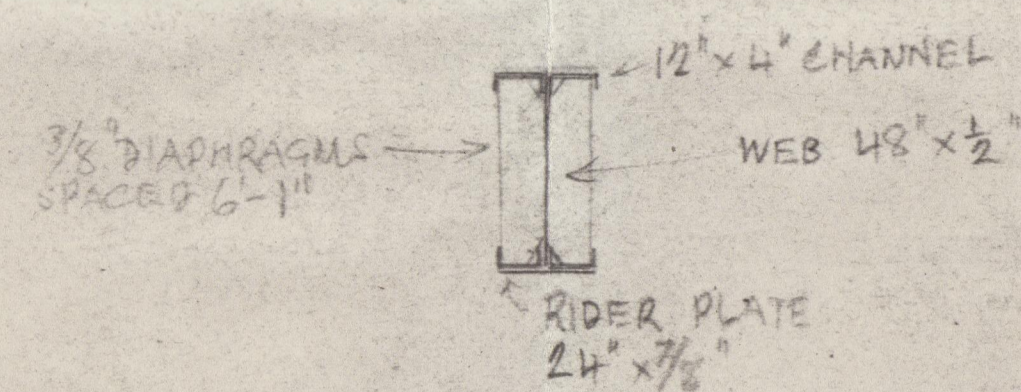
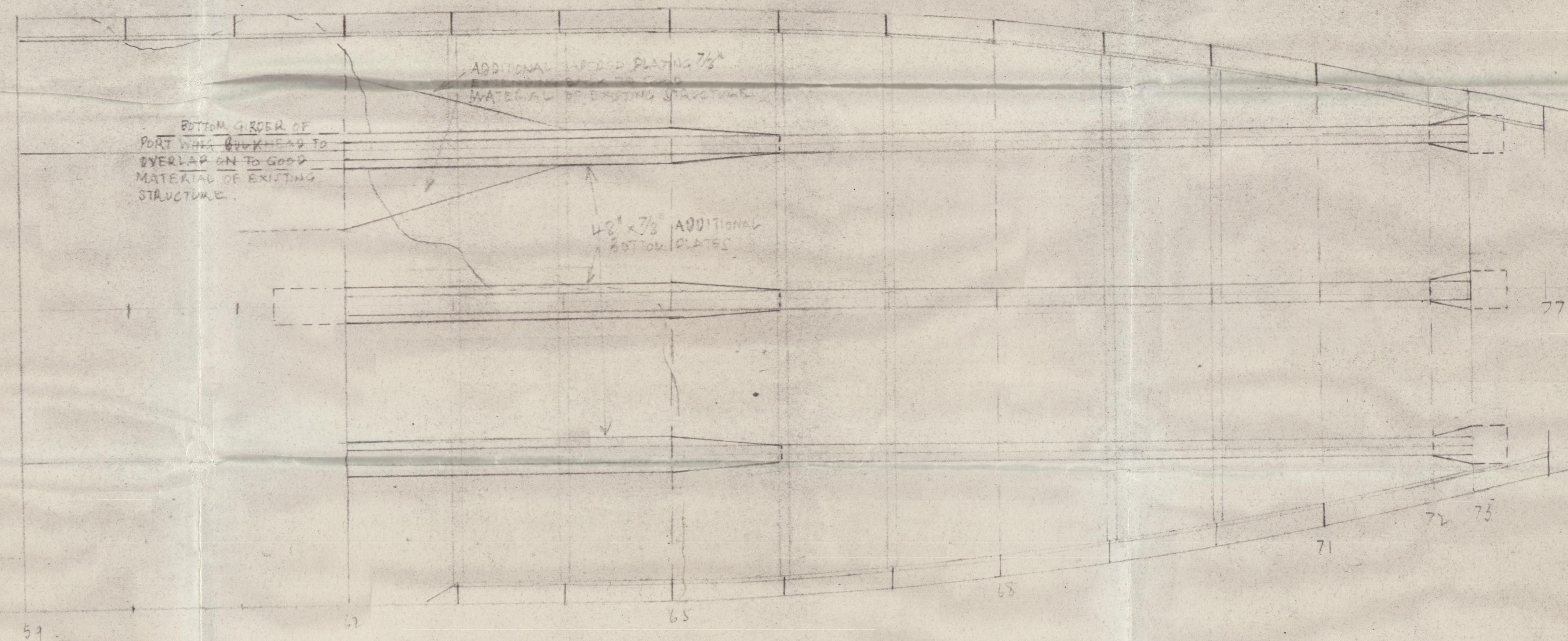


PROFILE AT CENTRE GIRDER



FOREPEAK AND FOREDECK TANKS  
TO BE PLATED IN ON BOTTOM, DECK  
TO BE WATERTIGHT COMPARTMENTS  
AND FITTED WITH TEMPORARY SUCTIONS.



PLAN VIEW

N°4 STARBOARD AND N°5 PORT WING TANKS  
TO BE MADE REASONABLY WATERTIGHT  
BY CEMENT, AND FITTED WITH  
TEMPORARY SUCTIONS OR CONNECTED  
TO COMPRESSED AIR SYSTEM.

S/S "MARKAY"  
TEMPORARY REPAIRS REQUIRED BY  
LLOYD'S REGISTER OF SHIPPING  
FOR ISSUE OF INTERIM CERTIFICATE  
FOR VOYAGE IN BALLAST  
TO THE U. S. A.

SCALE 1/8" = 1 FOOT.

NOTE: DETAIL OF ALL ATTACHMENTS  
TO BE ARRANGED TO SATISFACTION.



W996-0127

*Markay*

*Sws. 23461.*



© 2020

Lloyd's Register  
Foundation