

# TENSILE STRENGTH OF CYL: SHELL PLATES, BUTTSTRAPS, GIRDERS & MANHOLE RING = 28 3/4 TO 32 TONS

" " " ALL OTHER " 26 TO 30 TONS

" " " LONG: STEEL STAYS 28 " 32 "

NOTE! ALL RIVET-HOLES DRILLED IN PLACE

WORKING PRESSURE 180 LBS <sup>2</sup>/<sub>IN</sub>

TESTED " 360 "

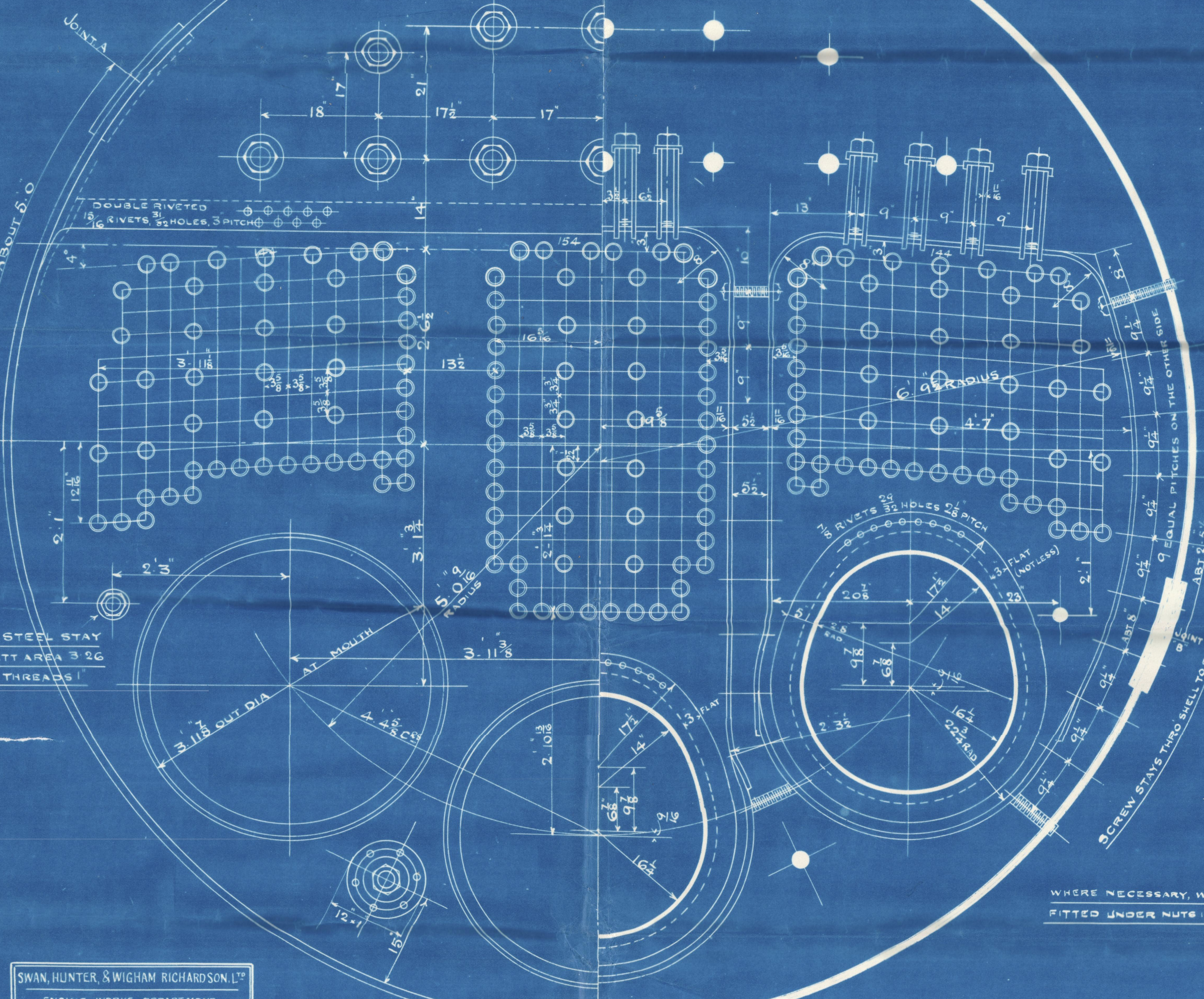
ALL PLATES OF STEEL

" RIVETS "

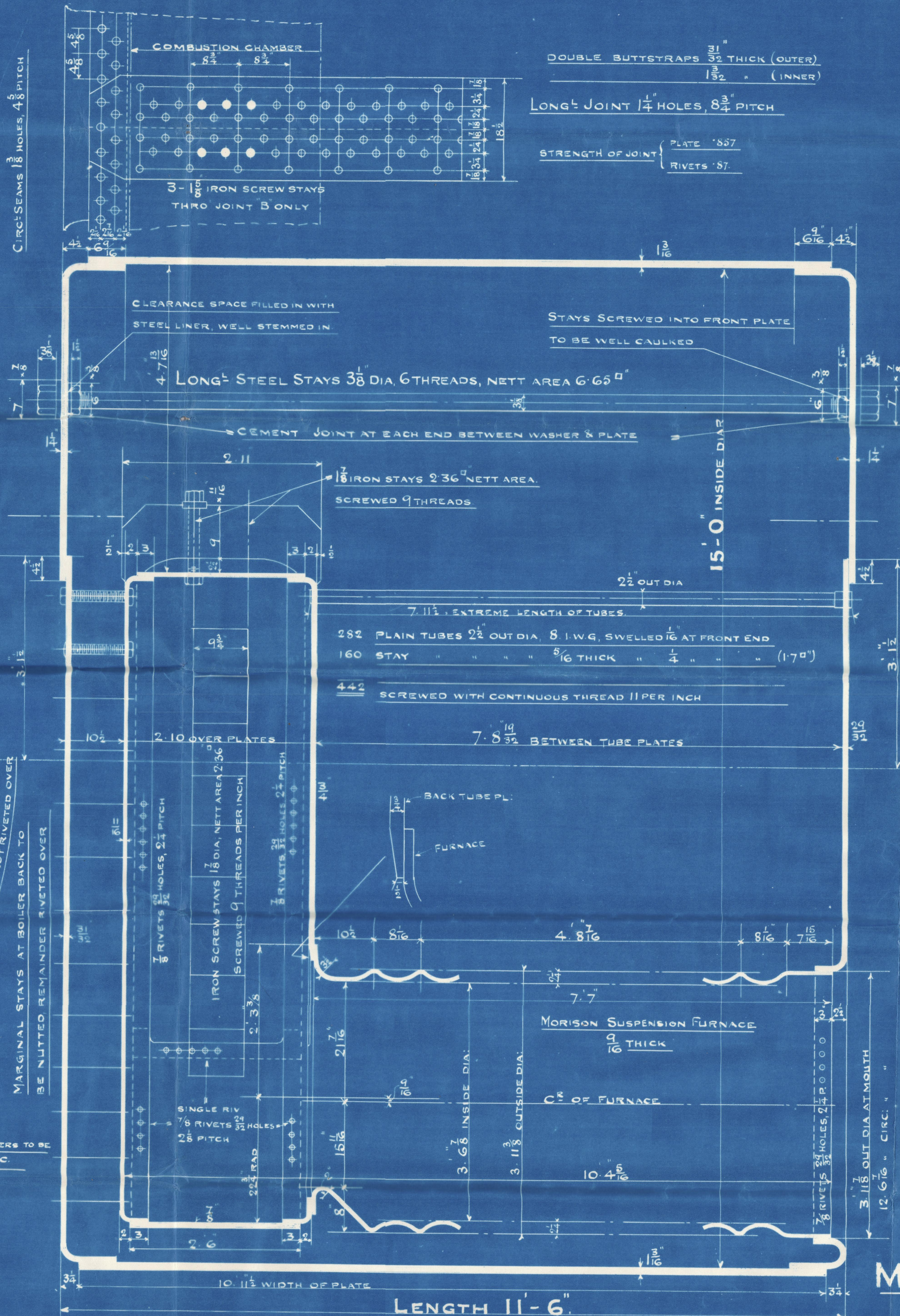
" TUBES " IRON

POSITION OF MANHOLE  
FIXED LATER BY SKETCH.

WHERE NECESSARY, WASHERS TO BE  
FITTED UNDER NUTS IN C.C.



SWAN, HUNTER, & WIGHAM RICHARDSON, L<sup>TD</sup>  
ENGINE WORKS DEPARTMENT  
NEPTUNE WORKS,  
WALKER  
NEWCASTLE-ON-TYNE  
No 4918 DATE 26.5.11

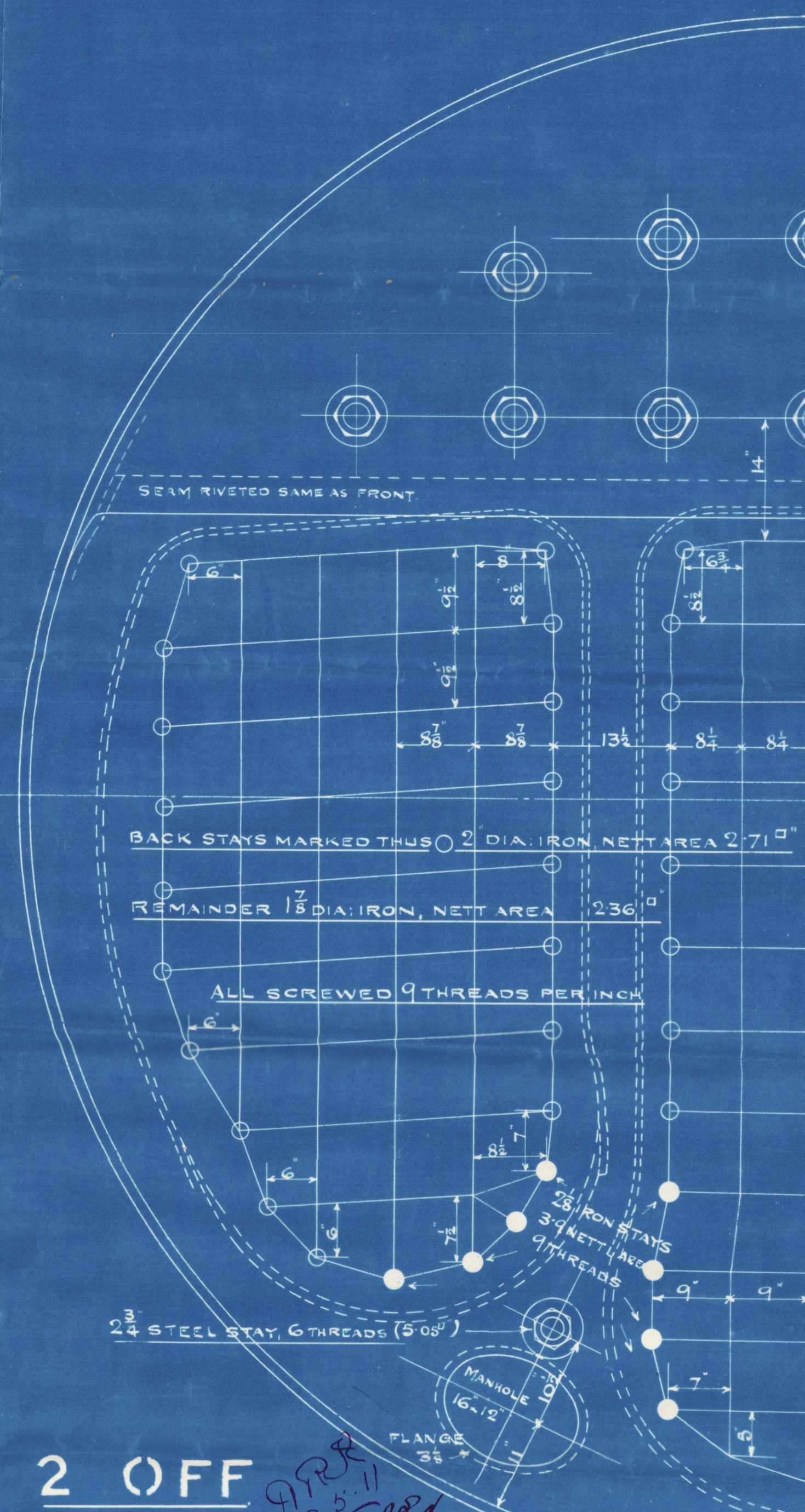


TOTAL HEATING SURFACE (2 BOILERS) = 5322 <sup>2</sup>/<sub>FT</sub>

GRATE " "

LENGTH OF FIREBARS

TO LLOYDS SURVEY



2 OFF  
MAIN BOILERS  
No 870

SCALE 1 INCH TO ONE FOOT



Lloyd's Register  
Foundation



S. H. W. R. 870

W996-0066

2 S. E Boilers 180 lbs H.P.

A. A. Nascopie  
NEWCASTLE - ON - TYNE.

Report No 61722.



© 2020

Lloyd's Register  
Foundation