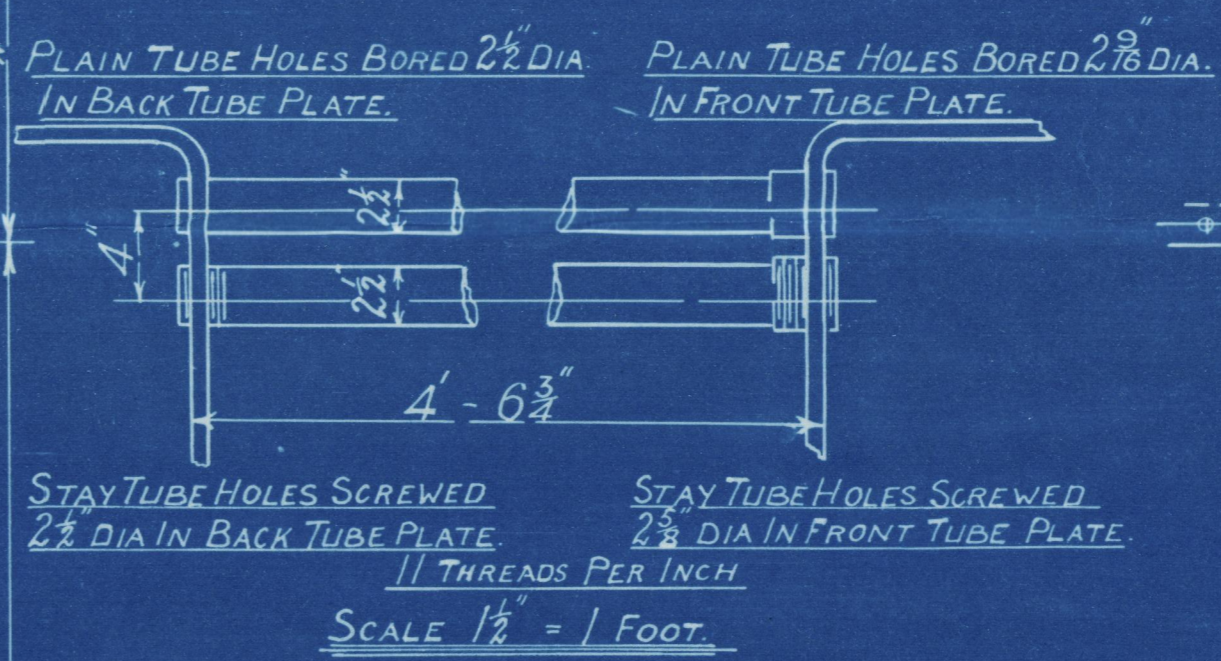


HORIZONTAL FLUE TUBES



HEATING SURFACE.	
TUBES-----	626 SQ.FT.
PLATE-----	104 " "
TOTAL-----	730 " "
GRATE AREA----	31.5 " "

LLOYDS.

PLATE	$\frac{2672}{2672} \times 100 = 66\%$
RIVETS.	$\frac{2 \times 645 \times 85}{2 \times 8 \times 685} = 69\%$
FRONT TUBE PLATE	$\frac{2 \times 63375}{4} \times 100 = 35\%$
BACK "	$\frac{2 \times 65}{4} \times 100 = 37\%$
SHELL	$\frac{202 \frac{1}{2} \times 5 \times 2 \times 66}{99} = 105\% \text{ LBS}$
FURNACE	$\frac{12000 \times 65625}{72} = 100\%$
FRONT TUBE PLATE	$\frac{205 \times 515 \times 2 \times 35 \times 25}{25 \times 74} = 103\%$
BACK "	$\frac{205 \times 515 \times 2 \times 35 \times 25}{74 \times 74} = 104\%$

BUREAU VERITAS.

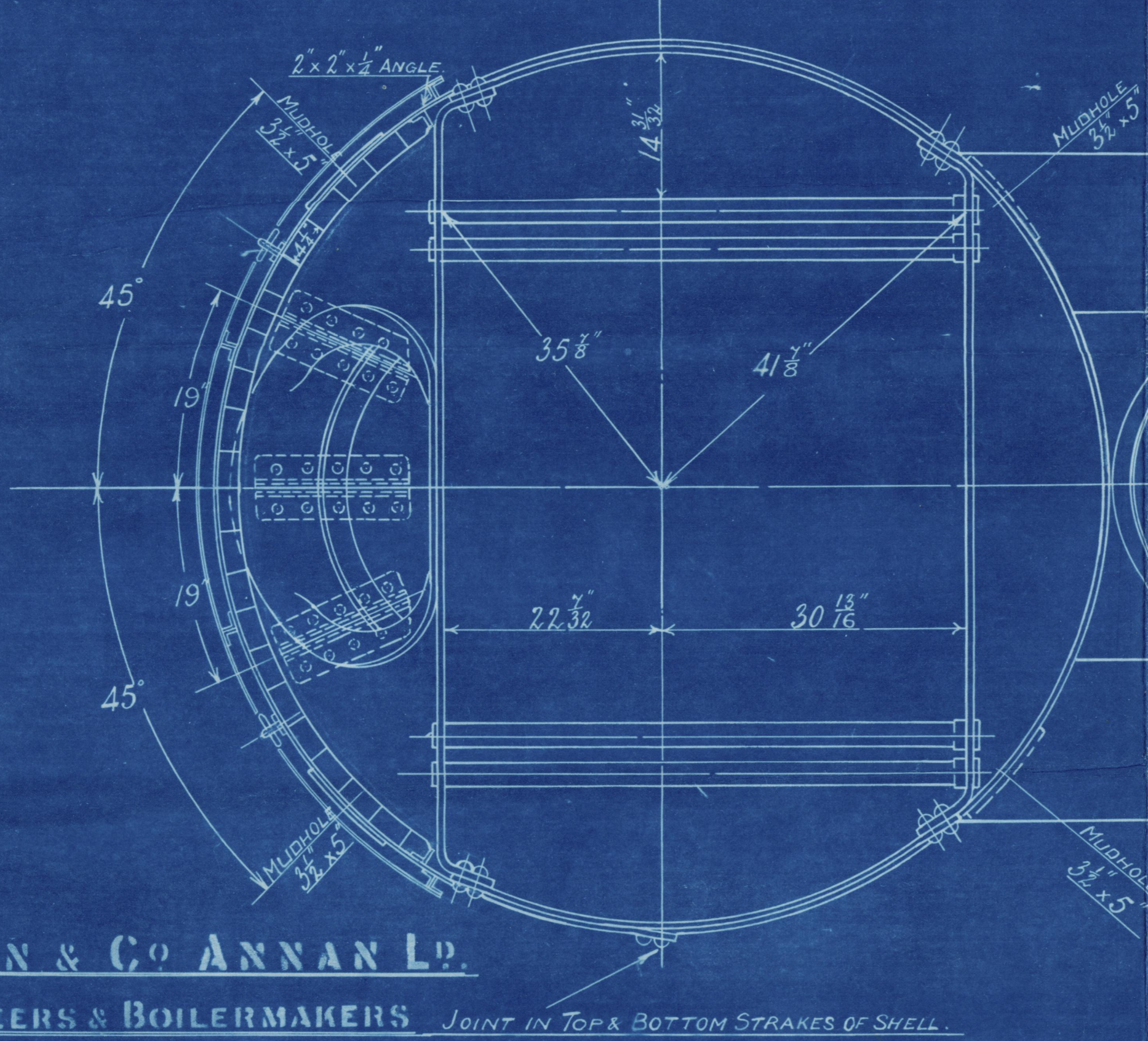
SHELL. $\frac{66 \times 2 \times 8 \times 2240}{90 \times 4} = 120 \text{ LBS}$

RIVETS $\frac{2 \times (2 \times 64 \times 8 \times 2240)}{90 \times 2 \times 82.5} = 1093$

FRONT TUBE PLATE $\frac{(10400 \times 9375 \times (4 - 2 - 59375))}{26.5 \times 56 \times 4} = 129$

BACK " " $\frac{(10400 \times 781 \times (4 - 2))}{26.5 \times 56 \times 4} = 1149$

FURNACE $\frac{500 \times (10.5 - 3)}{39} = 115$



7-6 DIA. X 16-3 HIGH X 730 @ HS X 100 LBS. W.P.

SCALE 1 INCH TO 1 FOOT

SIEMENS MARTIN MILD STEEL PLATES.

— TENSILE TESTS. —

PLATES NOT EXPOSED TO FLAME OR FLANGED ----- 28 TO 32 TONS.
PLATES EXPOSED TO FLAME OR FLANGED, EXCEPT FURNACE CROWN --- 26 TO 30 TONS.
FURNACE CROWN ----- 26 TO 29 TONS.

COCHRAN & CO ANNAN LD.

ENGINEERS & BOILERMAKERS *JOINT IN TOP & BOTTOM STRAKES OF SHELL.*

ANNAN, SCOTLAND

— PLAN OF CROWN JOINTS. —

INNER ROW OF RIVETS
FLUSH INSIDE.

DRAWING No 8603

SURVEY:-LLOYDS.

Glasgow
COCHRAN & CO., ANNAN, LD.

Boiler No. 5508

Drawing No. 8603

Susan Hunter & W Richards & Co 8/870.

GLASGOW REPORTING No. 30620



W996-0065



S.S. "Nascopie"
NEWCASTLE - ON - TYNE.

Report No. 61722.



© 2020

Lloyd's Register
Foundation

W996-0065 1/2

COCHRAN & Co., ANNAN, Ltd.

© 2020

Enclosure.

FOR

Lloyd's Register
Foundation

Messrs

