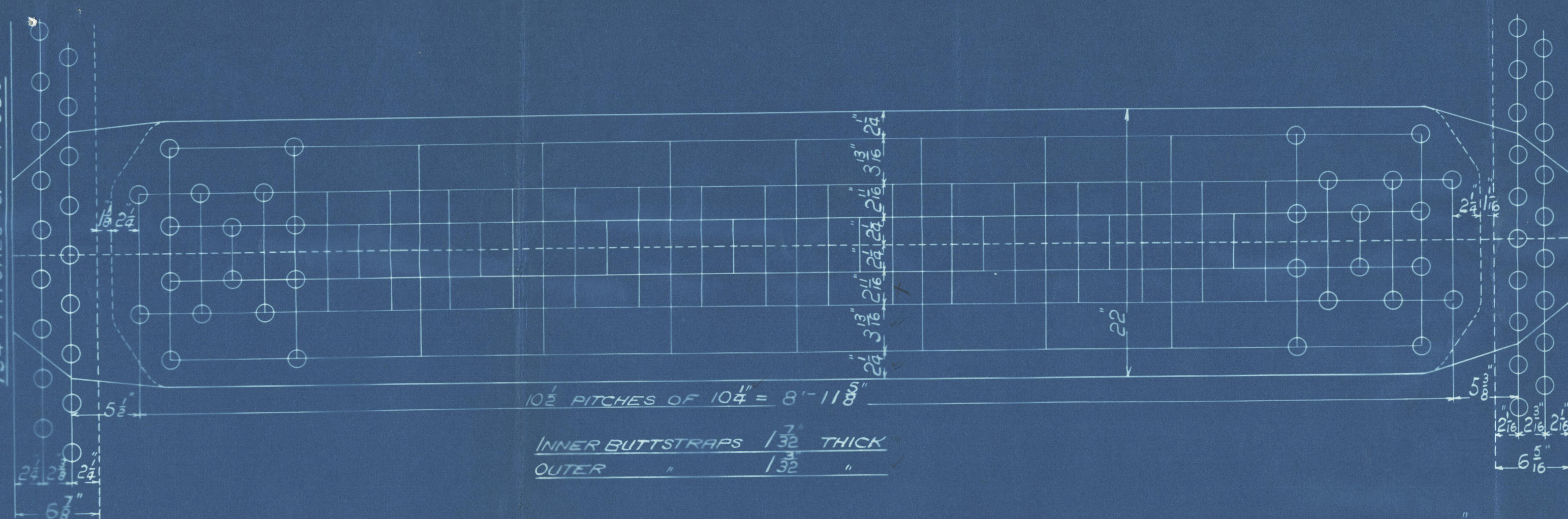


SURFACES	ONE BOILER	TWO BOILERS
TUBES	2537	4714
FIREBOX TOP AND SIDES	213	426
BACK	99	198
TUBEPLATE	64	128
FURNACES	184	368
TOTAL HEATING SURFACE	2917	5834
GRATE AREA (5" x 9" BARS)	76 1/2	153
TUBE AREA	17 1/2	35
WATER	165	330
STEAM SPACE	515	1030
GRATE AREA : HEATING SURFACE	1 : 38	
TUBE	1 : 32.95	
AREA	4.38	
WATER	1 : 2.15	
STEAM SPACE	1 : 6.7	
% BOILER ABOVE FIREBOX	29.8	
WEIGHT OF WATER	3 1/4 TONS	6 1/2 TONS

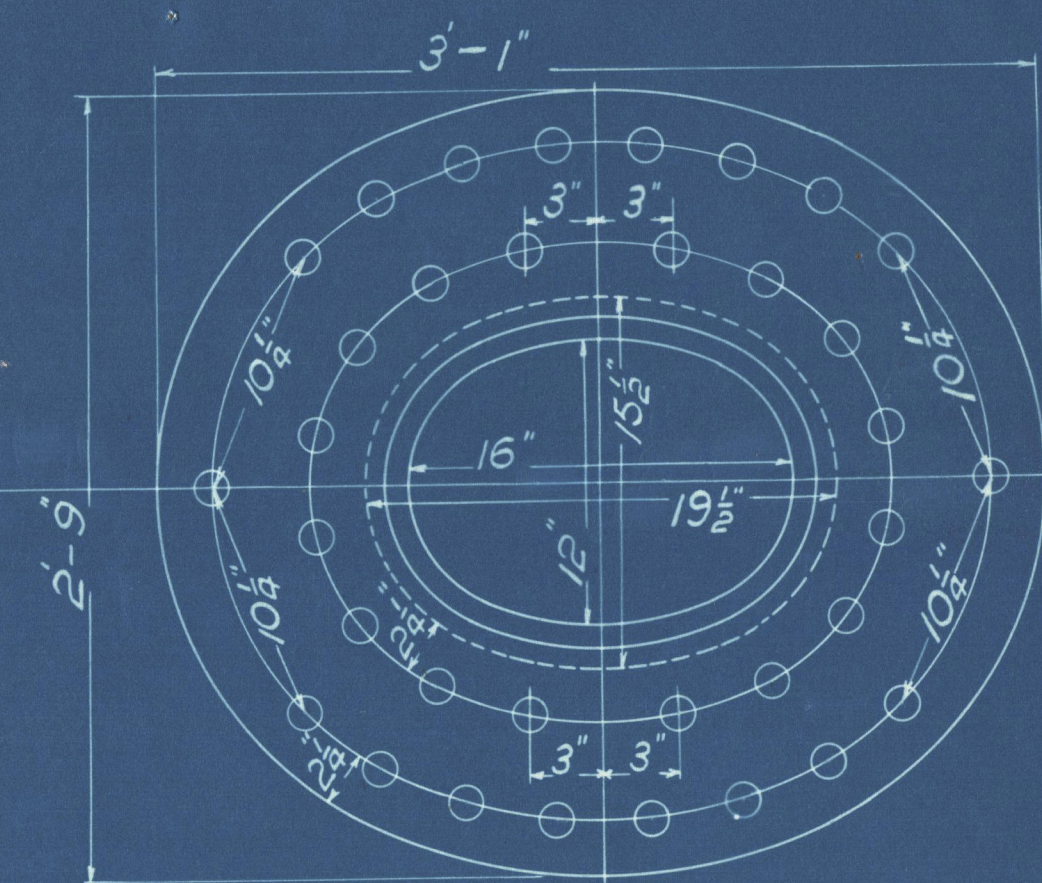
RIVETING	LONG	BACK END CIRC. L	FRONT END CIRC. L
RIVET HOLE DIA	1 1/2	1 1/2	1 1/2
PITCH	10 1/2	4.068	3.405
% PLATE	85.36	63.1	60.2
% RIVET	88.9	48.1	48.2
% COMBINED	88.5	—	—

LIMITS OF TENSILE STRENGTH & MATERIAL	29 TO 33 TONS	
SHELL & BUTTSTRAPS	29	33
CARGERS	26	32
OTHER PLATES	26	30
FURNACES	26	30
MAIN STAYS	29	32
SCREENED STAYS	26	30
RIVET BARS	26	30

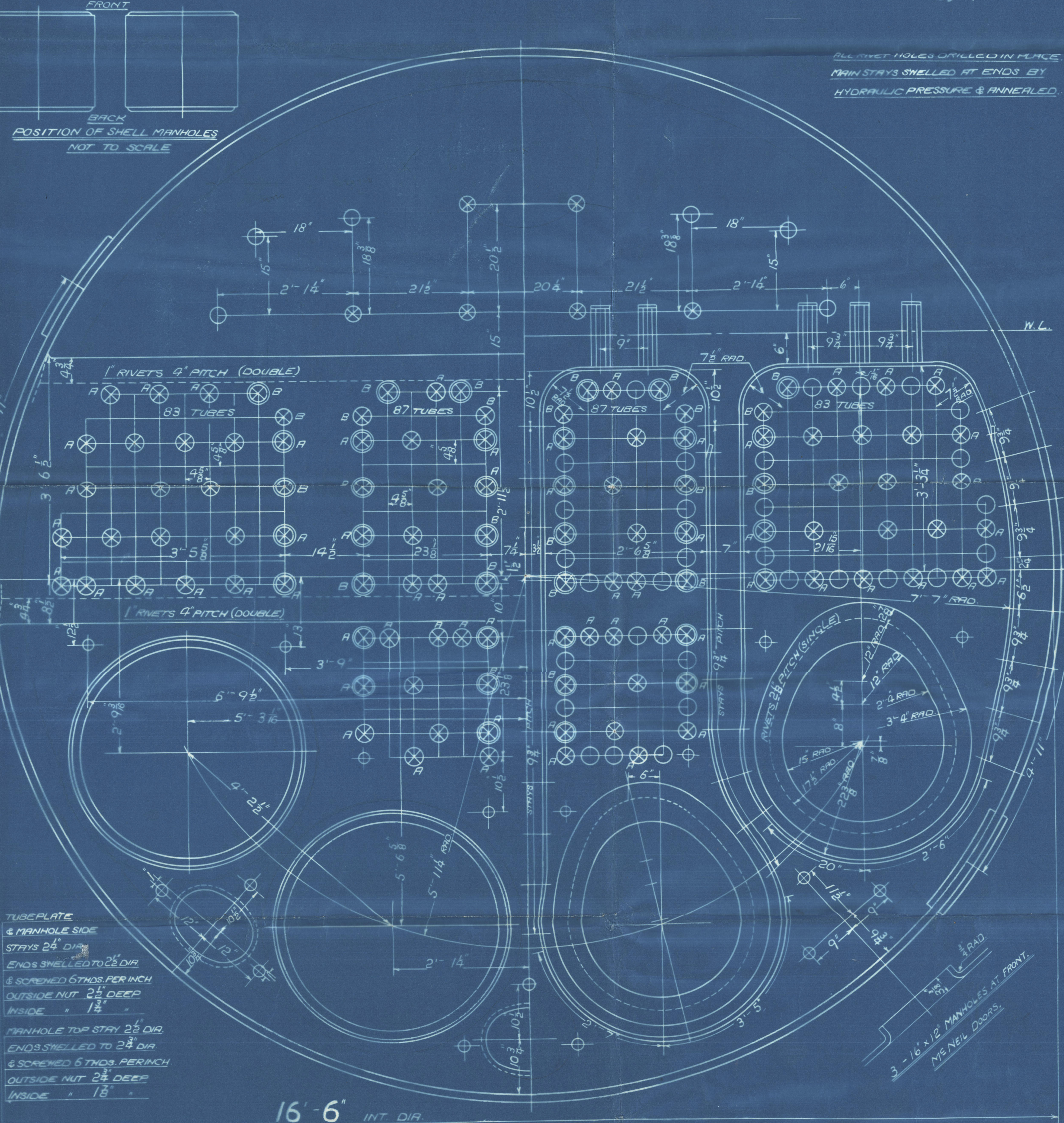
BACK END CIRCUMF. 154 PITCHES OF 4.068"



FRONT END CIRCUMF. 184 PITCHES OF 3.405"

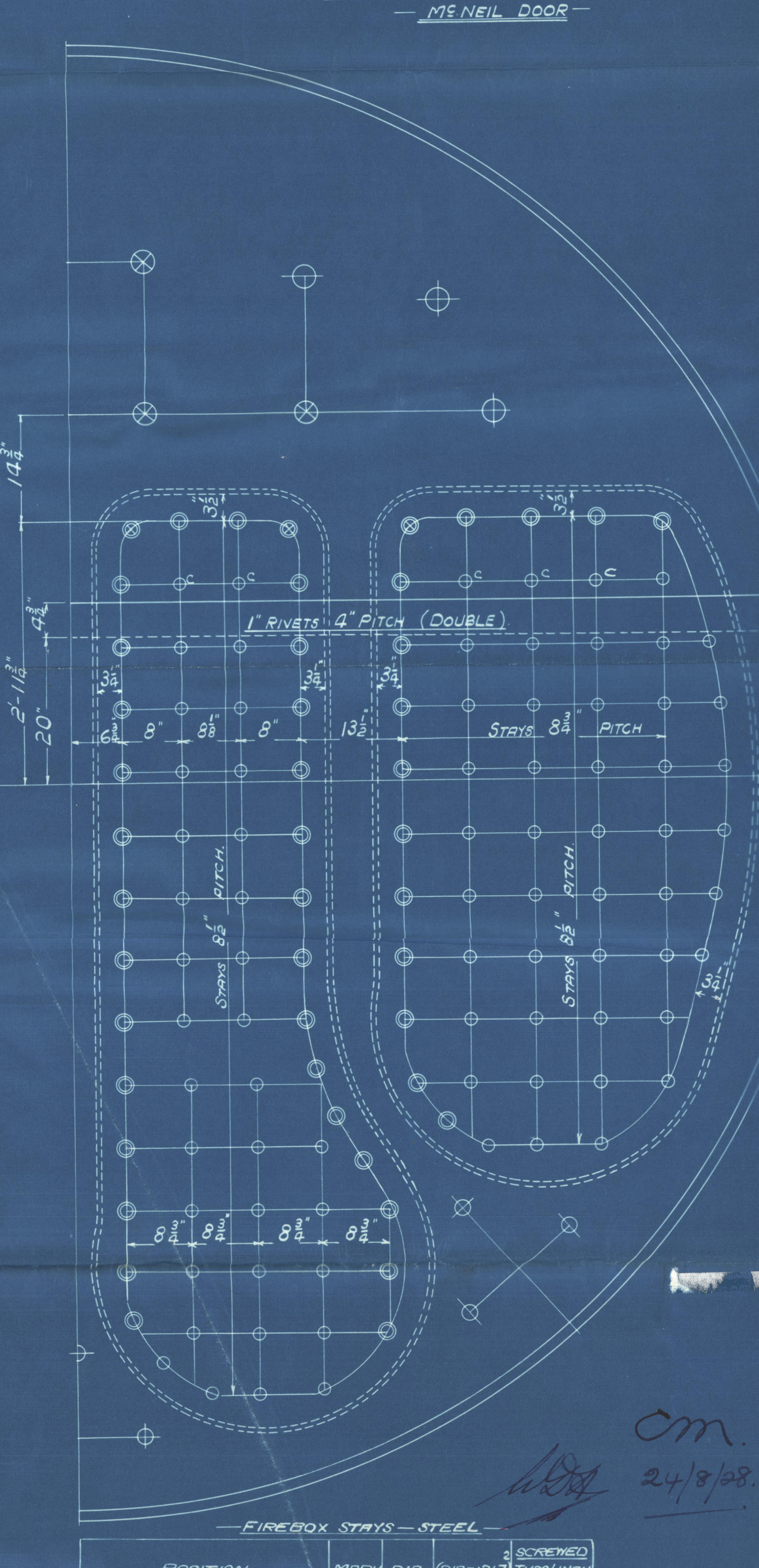
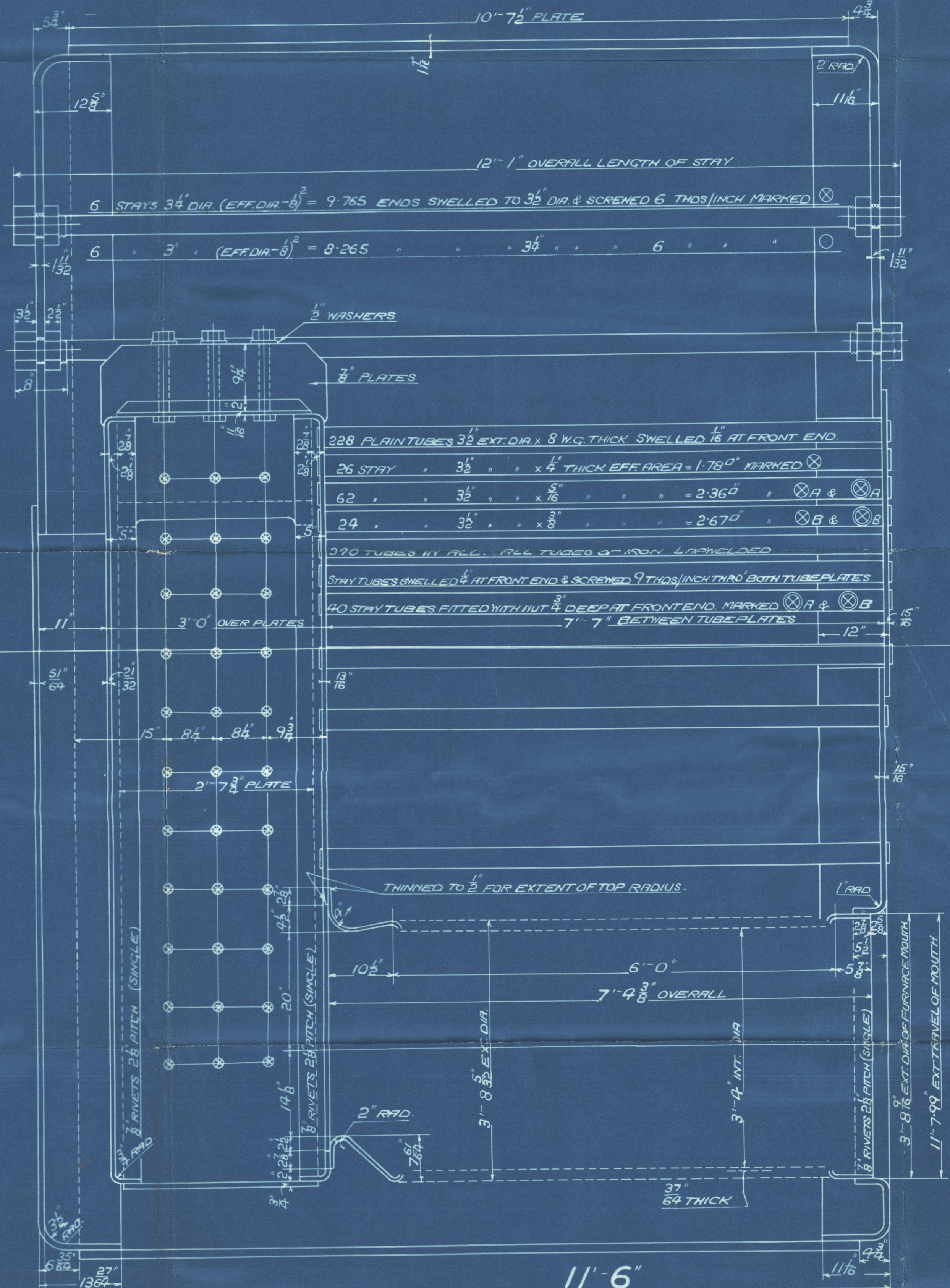


RIVET HOLES 1 1/2 DIA. — PLATE 1 1/8 THICK. —
SHELL MANHOLE COMPENSATING RING —
MC NEIL DOOR —



TUBEPLATE & MANHOLE SIDE
STAYS 2 1/2 DIA.
ENDS SWELLED TO 2 1/2 DIA.
& SCREENED 6 THOS PER INCH
OUTSIDE NUT 2 1/2 DEEP
INSIDE 1 1/2
MANHOLE TOP STAY 2 1/2 DIA.
ENDS SWELLED TO 2 1/2 DIA.
& SCREENED 6 THOS PER INCH
OUTSIDE NUT 2 1/2 DEEP
INSIDE 1 1/2

ALL RIVET HOLES DRILLED IN PLACE.
MAIN STAYS SWELLED AT ENDS BY
HYDRAULIC PRESSURE & ANNEALED.



MAIN BOILER — 2 OFF. — B. 367.

WORKING PRESSURE 200 LBS. PER SQ. INCH
TEST 350
TO PASS LLOYDS SURVEY
SCALES 1" & 1 1/2" = ONE FOOT

POSITION	MARK	DIA.	(DIA. - 2 1/2) THOS INCH	SCREENED
BACK	○	1 1/8	1.844	9
TOP & SIDES	⊗	1 1/8	2.199	9
BACK WIDE SPACES & TOP ROW	⊗	1 1/8	2.585	9
BACK TOP CORNER	⊗	2"	3.003	9

ALL FIREBOX STAYS SCREWED THRU BOTH PLATES AND NUT FITTED AT EACH END EXCEPT STAYS FROM FIREBOX TO SHELL AND STAYS MARKED 'C' IN BACK TOP END WHICH PROJECT 8" AND ARE CALKED. ALL 1 1/8 & 1 1/2 NUTS 8" DEEP EXCEPT ON GIRDER TOPS WHERE THE OUTSIDE NUTS ARE 1 1/2 DEEP. ALL 1 1/8 & 2" NUTS 1" DEEP.

OT. 13771 A
TRACED 11TH AUGUST, 1928.



GLASGOW

D. ROWAN & CO LTD

(2) BOILERS N^o 367

WP-200LBS

ALSA SB C, S/S N^o ⁴⁰⁷409

" " ENGINES N^o 144

N^o 18157
LLOYD'S TEST
350 LBS
WP-200LBS
L.C.D.
28-12-28

GLASGOW REPORT No. 48827

The Viceroy

GLASGOW REPORT No. 49048



© 2020

Lloyd's Register
Foundation

W991-0055