

THE NORTH EASTERN MARINE ENGINEERING CO. LTD.

SUNDERLAND.

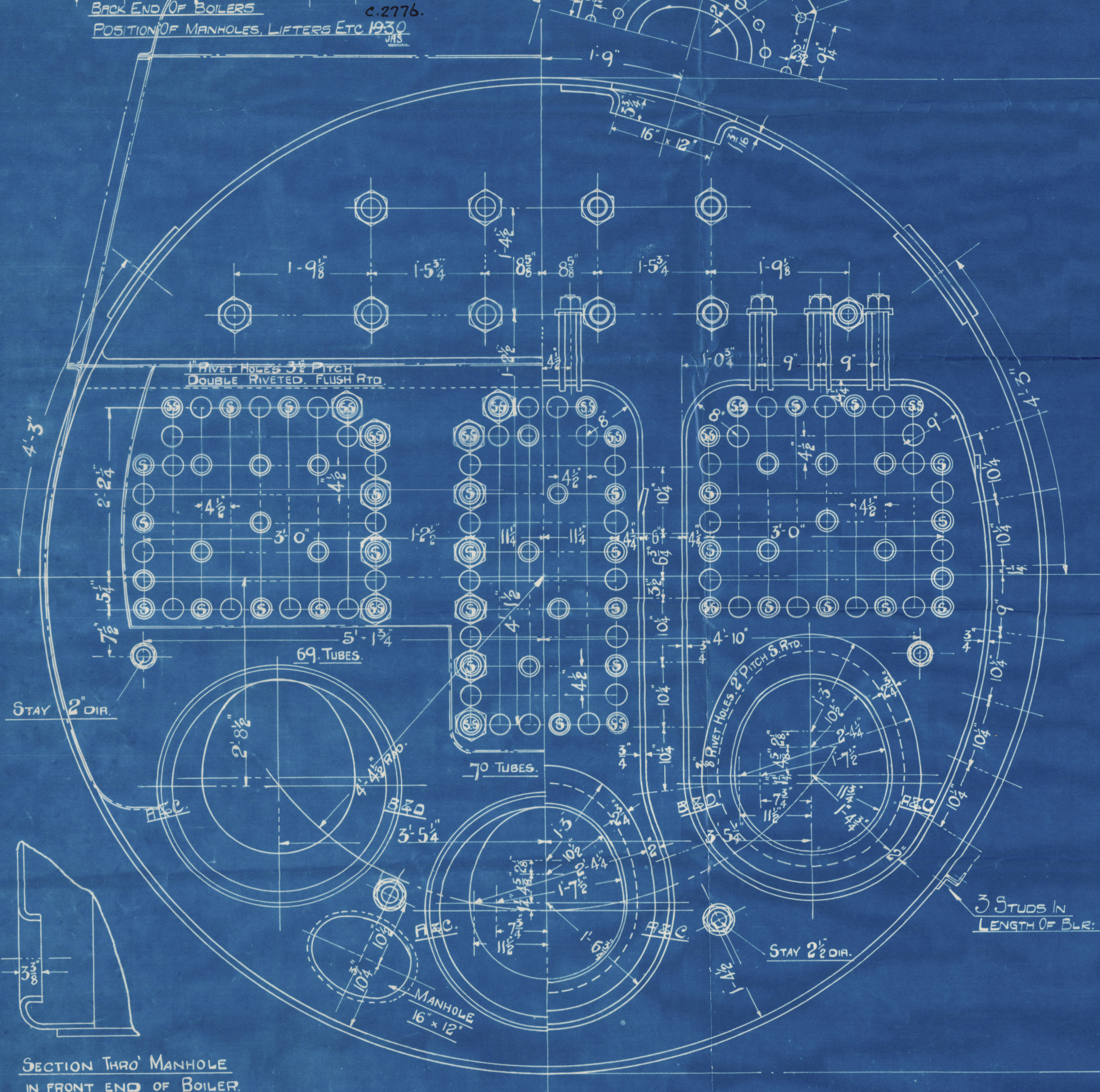
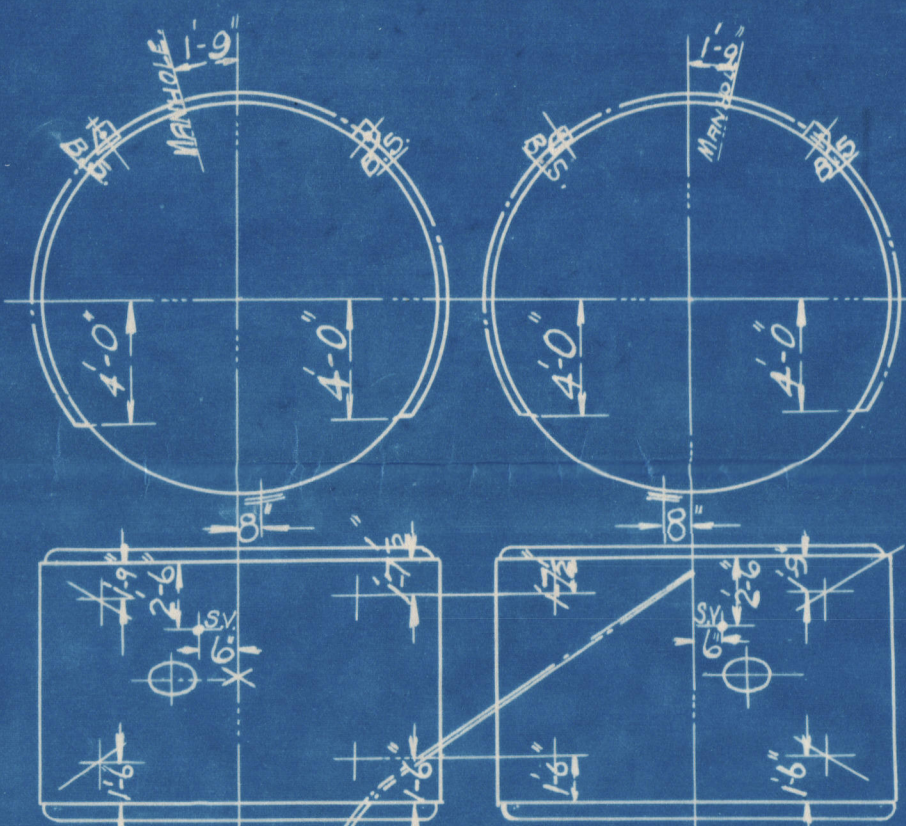
BOILER

SCALE 1 INCH TO A FOOT.

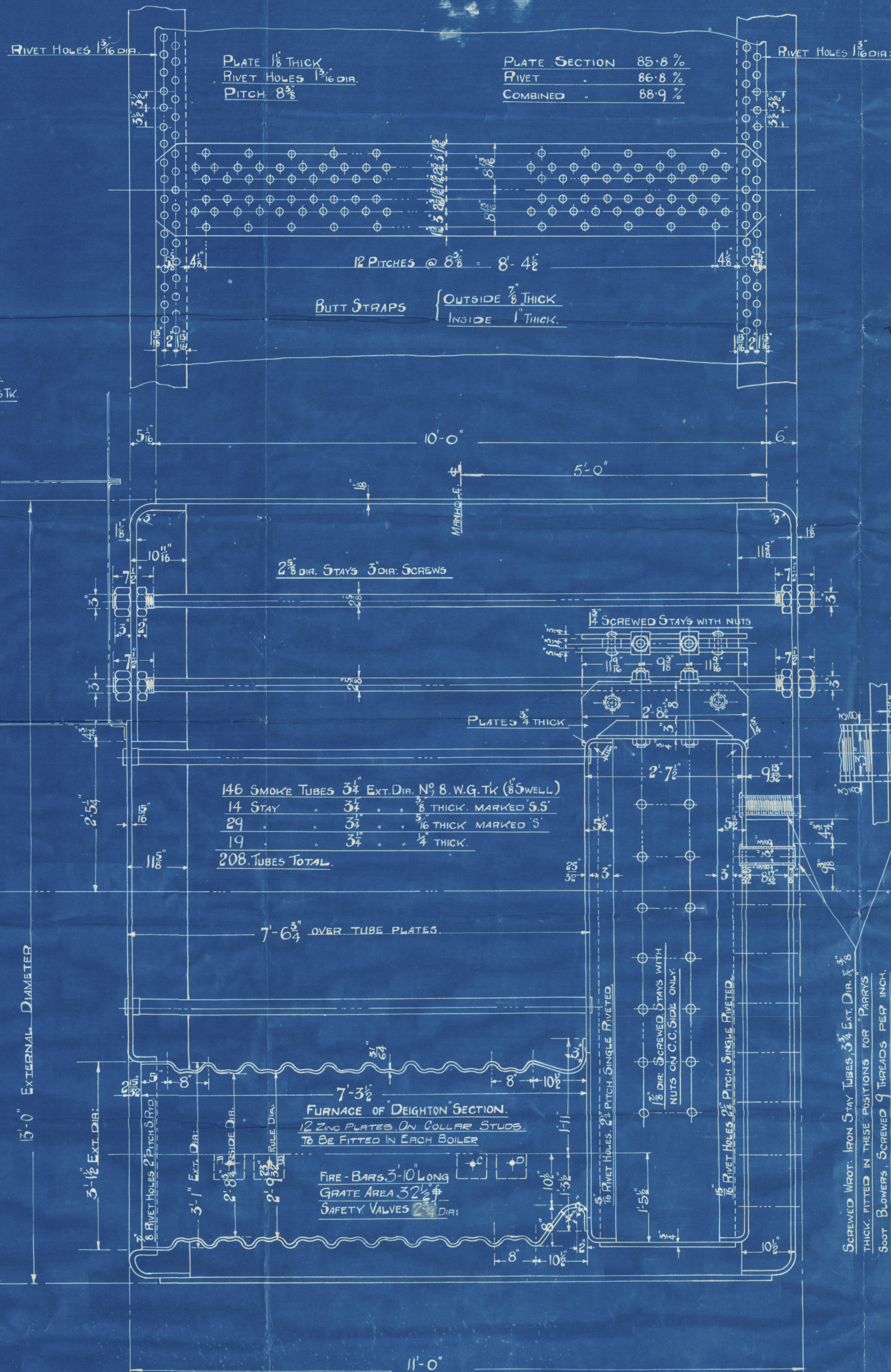
SCHEDULE "L."

WRITTEN DIMENSIONS ONLY TO BE TAKEN.

APPROVED BY LLOYD'S 4.7.1930. C2776



SECTION THRO' MANHOLE
IN FRONT END OF BOILER.



Steel tubes fitted

To Pass Lloyd's Survey		
SHELL = 2.75 x 15.75	200 LBS. PER SQ. IN.	
WORKING PRESSURE	200	
TEST	350	
HEATING SURFACE ON TUBES	1340 SQ. FEET	
OTHER PARTS	388	
TOTAL	1728	
EX. FRONT TUBE PLATE	1700	
EFFECTIVE AREA OF STAYS		
3/4" STAY TUBES 3/4" THK. 9 THREADS PER INCH	2.67 SQ. INCHES	
3/4" 9	2.17	
3/4" 4	1.64	
2 1/2" MAIN STAYS 6	5.41	
2 1/2" 6	4.11	
2 1/2" 6	2.51	
2 1/2" SCREWED STAYS 9	3.09	
2 1/2" 9	2.71	
1 1/2" 9	2.36	
1 1/2" 9	2.03	
ALL PLATES, RIVETS & STAYS - STEEL		
TUBES - WROUGHT IRON		
HOLES TO BE DRILLED IN PLACE AFTER BENDING		
TENSILE STRENGTH OF SHELL PLATES 29 TO 33 TONS		
BUTT STRAP 29 TO 33		
GIRDER 28 TO 32		
OTHER 26 TO 30		
MAIN STAYS 28 TO 32		
SCREWED 26 TO 30		

SCREWED WROG. IRON STAY TUBES 3/4" EXT. DIR. NO. 8 W.G. TK. 85 WELL. THICK. FITTED IN THESE POSITIONS FOR 'PARV'S' SOOT BLOWERS, SCREWED 9 THREADS PER INCH.

SCREWED STAYS SHOWN WITH NUTS 2" DIR. WITH NUTS FITTED ON BOTH ENDS. OTHER SCREWED STAYS 2" DIR. WITH NUTS ON BOTH ENDS.

DRAWN BY J.A.S.
TRACED BY M.M.
CHECKED BY J.A.S.
14.7.30

DRAWING N° 8763.

CONTRACT 2776. 1930
CONTRACT 2805. 20FE

Lloyd's Register
Foundation
199-005612

W199-0056(112)

N. E. M. E. CO., LIMITED, SUNDERLAND.

ENCLOSURE

FOR

Messrs LLOYD'S SURVEYORS.

NORTH EASTERN
MARINE ENG CO
N° 2805.

MAIN BOILERS.

$\frac{8}{5}$ " Wyehwood"

SUNDERLAND. N° 31482

W99-0056

© 2019

Lloyd's Register
Foundation