

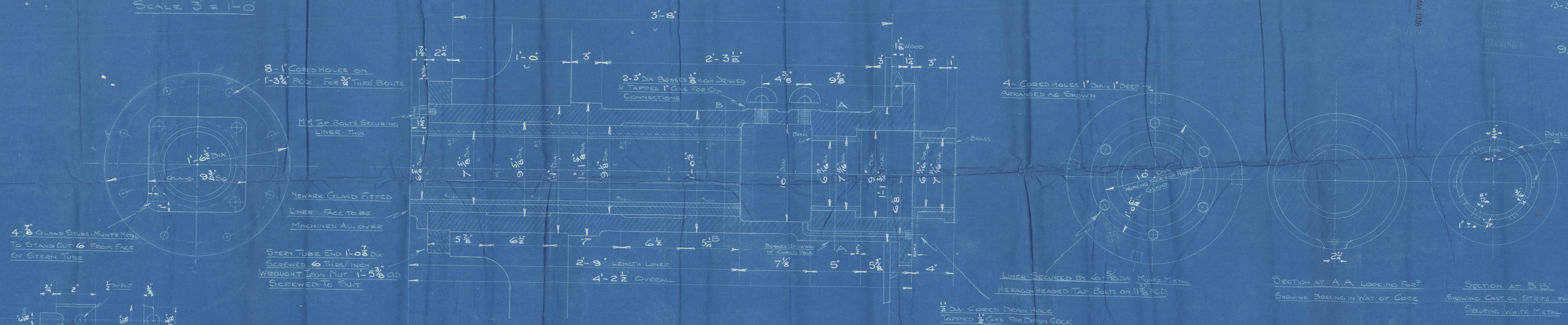
SMITHS DOCK CO LTD

STERN TUBE & SHAFTING

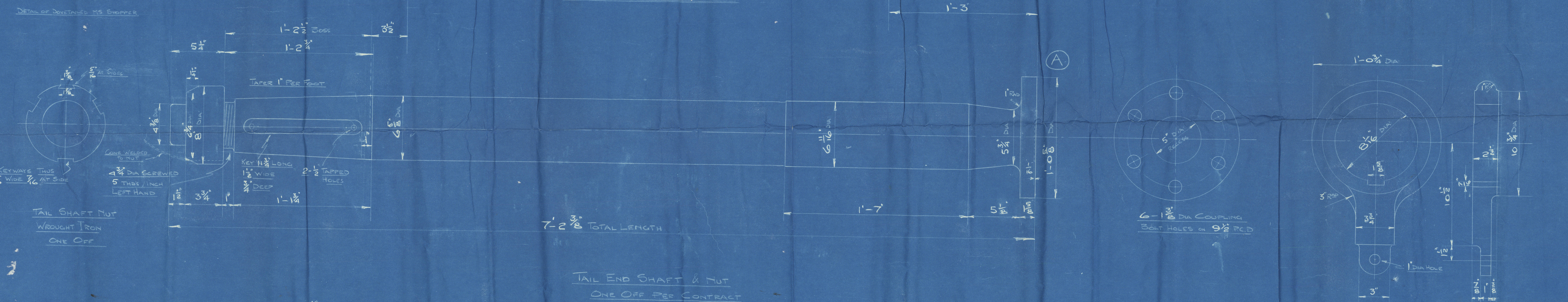
SCALE 3" = 1'-0"

21 MAR 1936

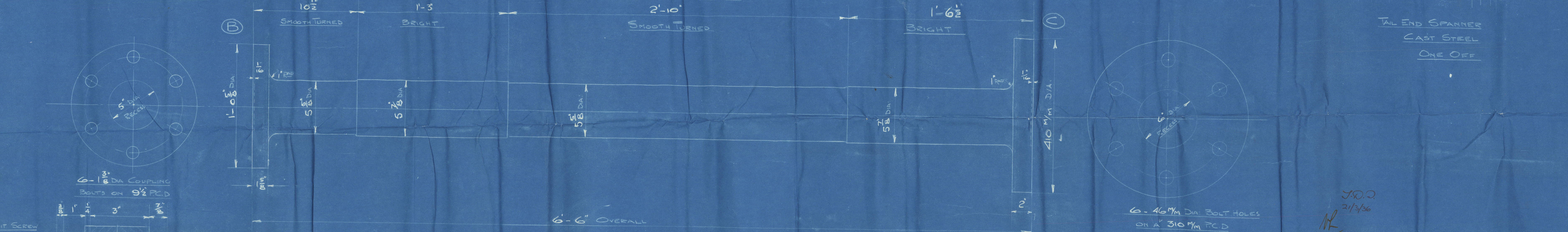
DRAWN BY
DATE
CHECKED
DATE
DRAWING NO. 93



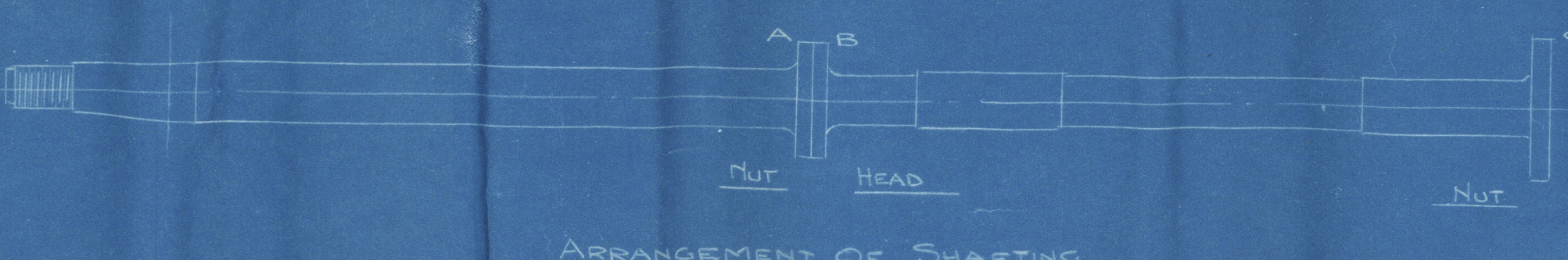
STERN TUBE & GLAND



TAIL END SHAFT & NUT
ONE OFF PER CONTRACT



INTERMEDIATE SHAFT
ONE OFF PER CONTRACT



ARRANGEMENT OF SHAFTING

THE WHOLE TO BE IN ACCORDANCE WITH THE CLASSIFICATION SOCIETY'S REQUIREMENTS & STAMPED BY THEIR INSPECTOR BEFORE LEAVING MAKER'S WORKS

CONTRACT NO.	SHIP NO.	SURVEY	MARKED UP BY	OFF NOTES
471				

ENGINE WORKS DEPT.

FROM

SMITH'S DOCK COMPANY, LTD.
SOUTH BANK-ON-TEES.

TO BE ENCLOSED TO:—

Merrys Lloyds Survey Ltd.

A & S—97141

W987-0299 2/2

Lloyds



SMITHS DOCK Co.

ENG. 471

Ship 995.

Shafting

S.S. "JOLLY GIRLS"
MDG. RPT. No. 15767.

RETAIN

Middlebury



© 2019

Lloyd's Register
Foundation

W987-0299 1/2