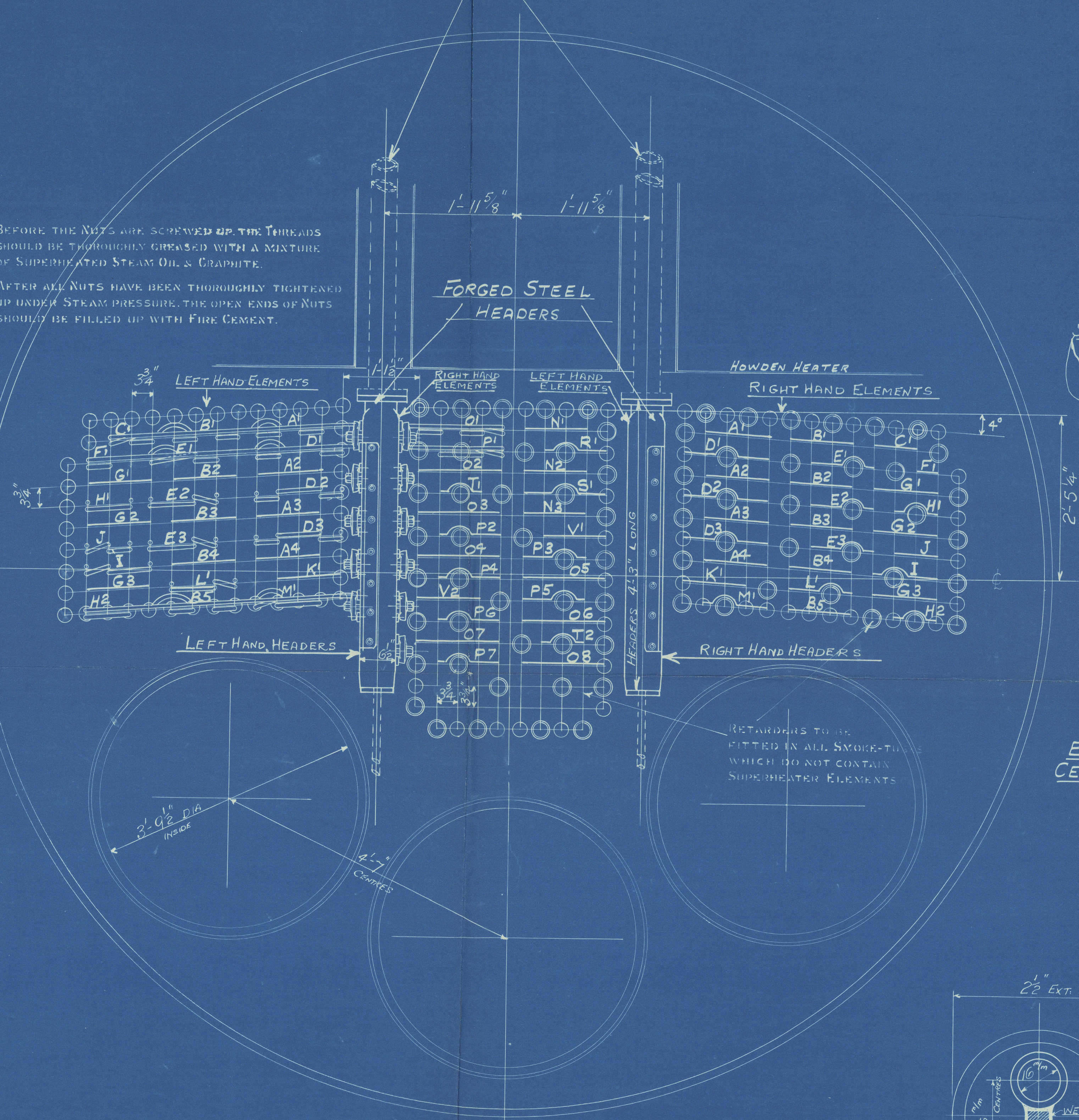


REVISION	REMARKS
1	HEADERS MOVED OUTWARDS 2" ELEMENT ENDS EXTENDED INTO COMBUSTION CHAMBER.

4" INT. DIA. STEAM PIPES
NOT SUPPLIED BY THE SUPERHEATER CO. LTD.

BEFORE THE NUTS ARE SCREWED UP THE THREADS SHOULD BE THOROUGHLY GREASED WITH A MIXTURE OF SUPERHEATED STEAM OIL & GRAPHITE.
AFTER ALL NUTS HAVE BEEN THOROUGHLY TIGHTENED UP UNDER STEAM PRESSURE, THE OPEN ENDS OF NUTS SHOULD BE FILLED UP WITH FIRE CEMENT.



SPACERS WELDED BETWEEN
ALL ELEMENTS EXTENDING 6" INSIDE C/C

ELEMENTS IN
CENTRE BOX

15'-9" EXT. DIA.

327 PLAIN TUBES 2 1/2" EXT. DIA. x 7.1WG. THICK

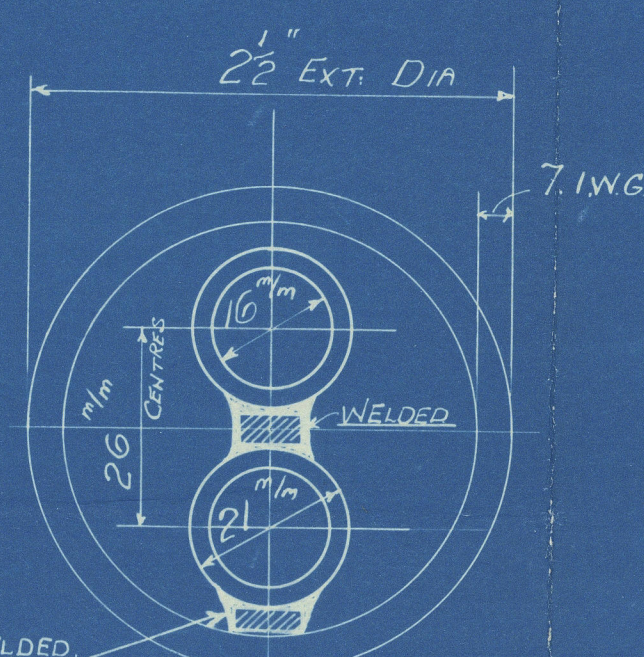
101 STAY " 2 1/2" " " x 5/16" THICK MARKED

6 " " 2 1/2" " " x 7/16" " " "

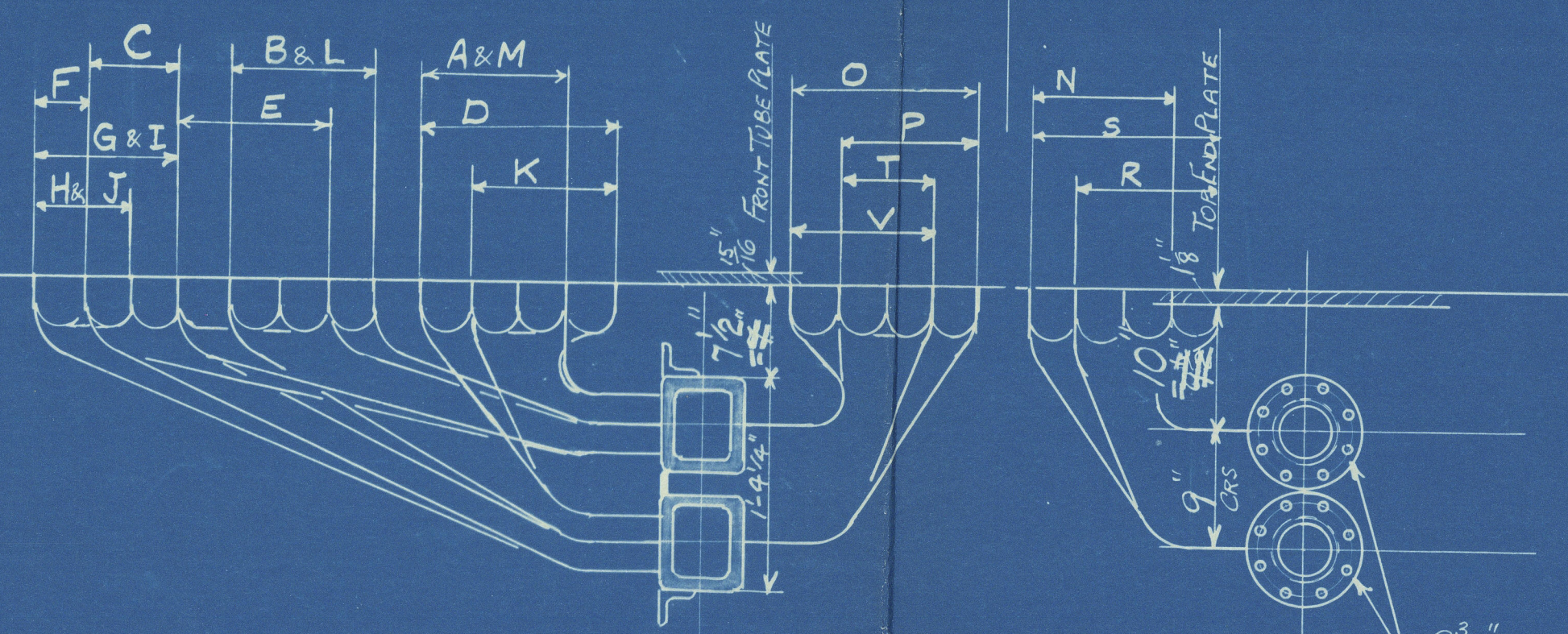
434 TOTAL TUBES PER BOILER

SUPERHEATER TUBES INSERTED IN "PLAIN-TUBES" ONLY.

12'-0" LONG



POSITION OF SUPERHEATER TUBES
IN BOILER TUBES.



8 3/4" DIA. FLANGES x 1/8" THICK
8 - 13/16" HOLES FOR 3/4" BOLTS
ON 7" DIA. P.C.

SCALE

1" = ONE FOOT

DWN. 4/4 FSD 4/4

2/11/32

TO PASS LLOYDS SURVEY

TEST PRESSURE 540 LBS PER SQ. IN.

THE SUPERHEATER CO. LTD.
BUSH HOUSE LONDON W.C.2

TITLE PROPOSED ARRANGEMENT OF SUPERHEATER
S. TYPE

REF. CKD. DRAWING NOS.
6116 MRS. 9156 MNS150A

JOHN DICKINSON & SONS LIMITED.

S.S. "KING ROBERT"

EX. (CITTA DE MESSINA)

L

Lloyd's Register
Foundation