

6½kW Generator

INGLIS, 1299 R.

26 MAR 1945

Messrs. RUSSELL NEWBERRY & CO. LTD.

Order No. 7146
August 24th, 1944.**PARTICULARS OF TEST**

TYPE V.E. LOUVRED TYPE. RATING CONTINUOUS.

GENERATOR MACHINE No. 10216.

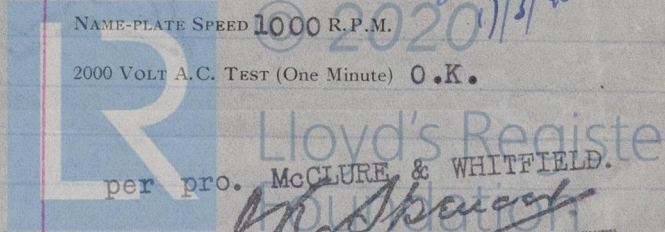
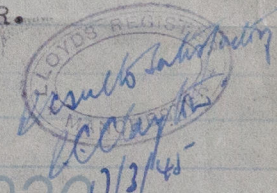
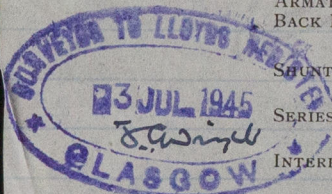
SIZE No. 6A (5")

OUTPUT 59 AMPS. 6.5 K.W. 1030 r.p.m. light
B.H.P. 110 VOLTS 1000 R.P.M. loaded.

STYLE OF WINDING COMPOUND.

DATE OF TEST 22nd Jan/45. LENGTH OF RUN six hours.

TIME	AMPS.	VOLTS	R.P.M.	B.V.	DIRECTION OF ROTATION	REMARKS
	0	131	1030		↶	Max. volts cold light No resist. in field. Shunt current 2.5 amps.
8-30 a.m.	0	110	1030		"	Starting figures cold. Regulator
	59	113	1000		"	Set. Shunt current 1.45 amps.
2-30 p.m.	0	110	1030		"	Final figures warm. Regulator set
	59	111	1000		"	Shunt current 1.42 amps.
Two hours at 25% overload.						
2-45 p.m.	74	110	1000		"	
4-45 p.m.	74	110	1000		"	
One minute at 50% overload.						
	90	110	1000		"	
	0	123	1030		"	Max. volts warm light. No resistance in field. Shunt current 2 amps.
	59	119	1000		"	Max. volts warm loaded No resistance in field. Shunt current 1.95 amps.
MACHINE SET TO RUN Counter clockwise. 2-30 p.m.					↶	TESTED WITH REGULATOR No. 19074.
						LOOKING AT COMMUTATOR END
TEMPERATURE: ATMOSPHERE FAHR.					RISE	HEIGHT CHECKED BY C.R.
					54	INSULATION RESISTANCE
COMMUTATOR					92	HOT 30 MEGOHMS
ARMATURE AND POLE PIECE					100	COLD 50 MEGOHMS
ARMATURE BACK END					102	NAME-PLATE SPEED 1000 R.P.M.
SHUNT					87	2000 VOLT A.C. TEST (One Minute) O.K.
SERIES					86	
INTERPOLES					88	



McCLURE & WHITFIELD, Electrical Engineers, Range Road, Adswold, STOCKPORT