

# Lloyd's Register of Shipping.

## SURVEYS FOR FREEBOARD.

### (CONDITIONS OF ASSIGNMENT.)

3 OCT 1939

Ship's Name

m/t "Janus"

Port of Survey

Sandshana

Official Number

Surveyor's Signature

Adunden

Survey partly held  
by Mr. J. G. Jørgen.

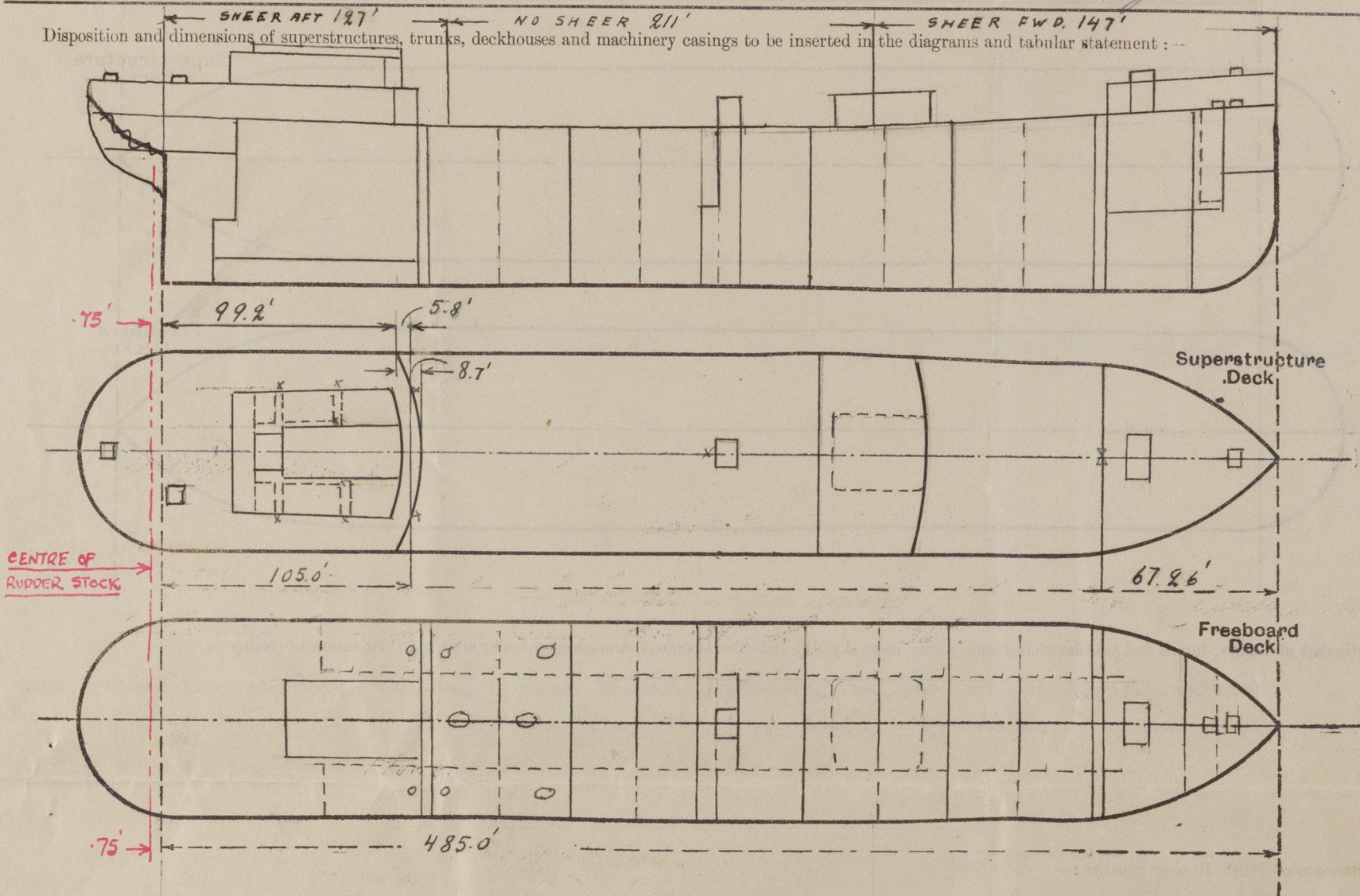
Nationality and Port of Registry

Norwegian, Sandefjord

Date of Survey

While building

Disposition and dimensions of superstructures, trunks, deckhouses and machinery casings to be inserted in the diagrams and tabular statement:—



Particulars of Superstructures, Trunks, Casings, Deckhouses.

	Coaming	Plating	Stiffeners	Spacing	End Attachments of Stiffeners	Size of Openings	Height of Sills	Height of Casings
Poop Bulkhead ... <i>Centre Sides:</i>	<i>None</i>	<i>.44" ✓</i>	<i>10"x3 1/2"x.40" T ✓</i>	<i>24 3/4" ✓</i>	<i>Bkts T. &amp; B. ✓</i>	<i>26" x 43" ✓</i>	<i>18" ✓</i>	<i>7.75'</i>
		<i>.44" ✗</i>	<i>8"x3 1/2"x.40" T ✓</i>	<i>28 3/4" ✗</i>				
Raised Quarter Deck Bulkhead ...								
Bridge, After Bulkhead ...								
Bridge, Forward Bulkhead ...								
Forecastle Bulkhead ...	<i>None</i>	<i>.32"-.40" ✓</i>	<i>3"x2"x.28" T ✓</i>	<i>27 9/16" ✓</i>	<i>None</i>	<i>37" x 51 1/4" x</i>	<i>24" ✓</i>	<i>7.5' ✓</i>
Trunk, Aft <i>Main pump room casing</i>	<i>None</i>	<i>.26" Vert. 3 1/2" x 2 3/4" x .28" T ✓</i>	<i>31 1/2" ✓</i>	<i>Bkts T. &amp; B.</i>	<i>24" x 71" ✓</i>	<i>43" ✓</i>	<i>11.5' ✓</i>	
Trunk, Forward	<i>None</i>	<i>.26" Horiz. 8" x 3" x .40" T ✓</i>	<i>53" ✓</i>	<i>E.W.</i>				
Exposed Machinery Casings on Freeboard or Raised Quarter Decks ...	<i>See centre part of page</i>					<i>Bulkehead ✓</i>		<i>Ab. local dls</i>
Exposed Machinery Casings on Superstructure Decks ...	<i>Sides</i>	<i>.26" ✓</i>	<i>3" x 2 1/4" x .28" T ✓</i>	<i>31 1/2" ✓</i>	<i>Bkt. T. Cont. B.</i>	<i>None</i>	✓	<i>3'</i>
Machinery Casings within Superstructures not fitted with Class I Closing Appliances ...	<i>Front</i>	<i>.32" ✓</i>	<i>3 1/2" x 3" x .32" T ✓</i>	<i>27 1/2" ✓</i>	<i>Bkt. T. ✓</i>	<i>None ✓</i>	✓	<i>10.5' ✓</i>
Deckhouses on Flush Deck Ships ...								

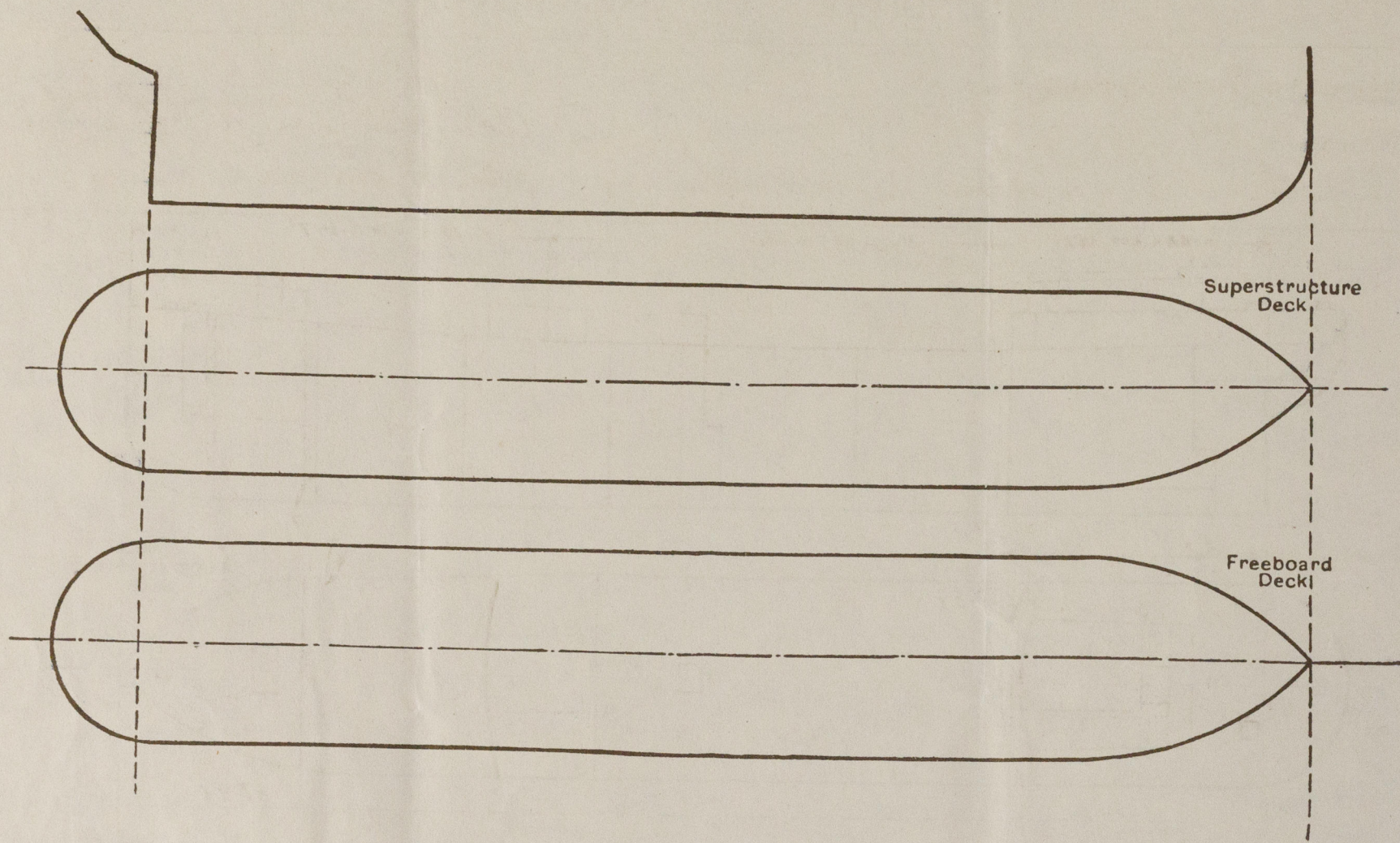
Particulars of Closing Appliances (state if capable of being manipulated from both sides).

Poop Bulkhead ...	<i>Hinged W.T. steel door p.s.s., manipulated from both sides.</i>
Raised Quarter Deck Bulkhead ...	
Bridge, After Bulkhead ...	
Bridge, Forward Bulkhead ... <i>Main pump room</i>	<i>Hinged W.T. steel door, manipulated from both sides.</i>
Forecastle Bulkhead ...	<i>3 1/2" shifting boards in channels, full height.</i>
Exposed Machinery Casings on Freeboard or Raised Quarter Decks ...	
Exposed Machinery Casings on Superstructure Decks ...	
Machinery Casings within Superstructures not fitted with Class I Closing Appliances ...	
Deckhouses on Flush Deck Ships ... <i>Poop</i>	<i>2" solid plank doors, manipulated from both sides.</i>



## PARTICULARS OF PROTECTION TO OPENINGS, ETC.

The following diagrams should be used to indicate the positions of cargo and coaling hatchways, gangway, cargo and coaling ports, ventilators, companionways, etc., which would affect the seaworthiness of the ship:—



Particulars of fiddle, funnel and ventilator coamings, engine room skylight and other openings in machinery casing tops and their means of closing:—

*Fiddle openings on top of donkey boiler casing fitted with hinged steel covers.*  
*Vent coaming:- Diam. 17", Thickness:- .34", Height 36" x*

Particulars of Flush Bunker Scuttles:— None. ✓

Particulars of Companionways:— Prop space entrance at sides of poop deck house:—

Size of door openings  $26\frac{1}{4} \times 65\frac{1}{2}$ ". Height of sills above steel deck, 18".  
2" solid teak cross, manipulated from both sides &

Particulars of Ventilators in exposed positions on freeboard and superstructure decks :—

for Ventilators in exposed positions of freeboard and superstructure decks:—						
<u>Top deck:—</u>	Diam.	5"-9"	Thickness.	30 <sup>"</sup> -34 <sup>"</sup>	Slight.	30" ✓
<u>1<sup>st</sup> deck:—</u>	~	21"	~	40 <sup>"</sup> -80"	~	24.8 Stayed. ✓
<u>2<sup>nd</sup> deck:—</u>	~	5"-9"	~	30 <sup>"</sup> -34 <sup>"</sup>	~	36" ✓

All ventilator coverings are electrically welded to decks and all are provided with means for closing &

Particulars of Air Pipes in exposed positions on freeboard, raised quarter, or superstructure decks :—

Prop and freeboard decks:- 39" in height.  
Forecastle deck:- 23"-24" ~ ~ ✓

all air pipes are of the goose-neck type and provided with means for closing open ends.

Particulars of Gangway Cargo and Coaling Ports:— *None* ✓

"Janus."

Particulars of Scuppers and Sanitary Discharge Pipes :—

To suppress below fuelboard deck!  
Sanitary discharge pipes from poop deck house and poop space are led overhead.  
3'-6" below fuelboard deck (accessible in Motor space) and are fitted with  
storm valves. Carboard drain pipes from the poop space are in addition  
fitted with nondetachable screw plugs at their lower ends.

Particulars of Side Scuttles:—

all side suttles are of strong construction and fitted hinged inside, deadlights.

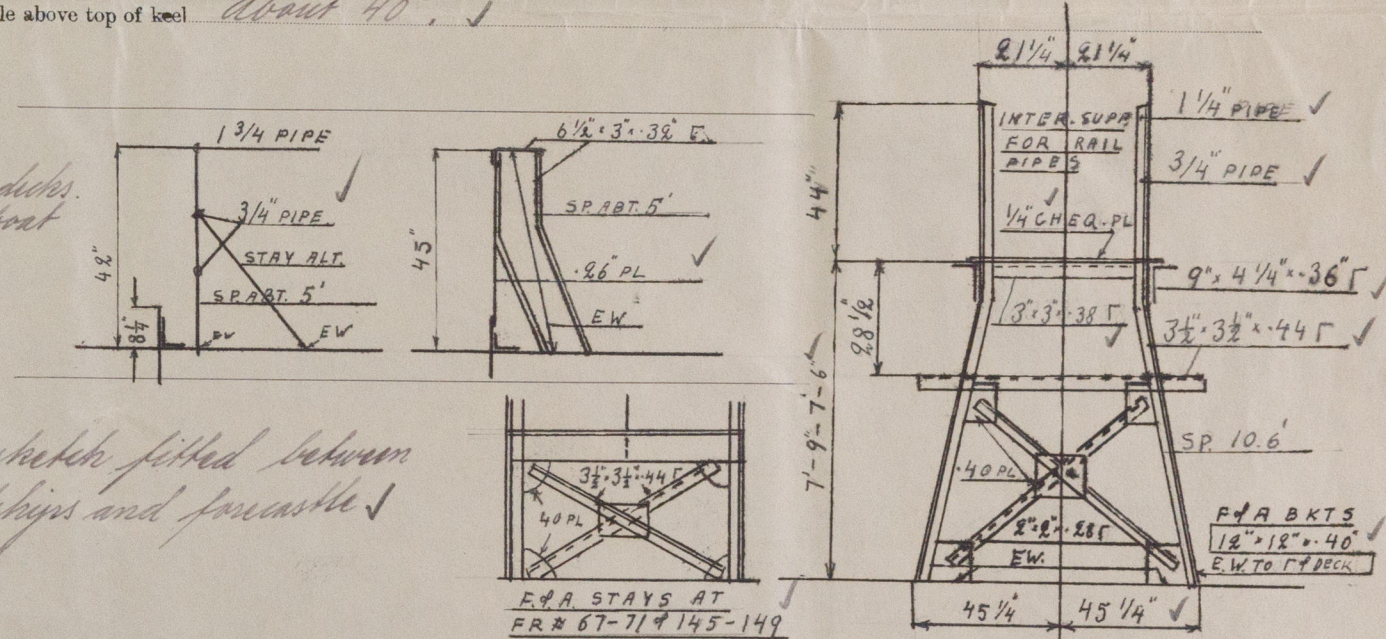
Vertical distance of Sill of lowest Side Scuttle above top of keel about 40' ✓

### Particulars of Guard Rails :—

Open rail on deck. & fole dicks.  
Bulwarks on poop and boat  
deck amidships.

Particulars of Gangways, Lifelines, etc. :—

Steel gangway as per sketch fitted between  
pump-dickhouse amidships and forecabin



### Particulars of Freeing Arrangements.

	Length of Bulwark	Height of Bulwark	Size of Freeing Ports	Number each side	Area each side	Rule area each side
After Well ... ..	<i>Open rail</i>					
Forward Well ... ..						

State position of each freeing port ... .. ( After Well :—

(F. and A. position and height above deck edge) { Forward Well:—

State whether the freeing ports are fitted with shutters, bars, or rails, and give particulars of such :—

Additional area where sheer is less than standard.



PARTICULARS OF PROTECTION TO OPENINGS, ETC.

HATCHWAYS ON FREEBOARD AND SUPERSTRUCTURE DECKS.												
Description of Hatchway		Cargo tanks	O.F. bunk	Freeboard deck	Man hel.	Coff. dem	Chain. L.	Forepeak	Poop deck	Stores	File deck	File sp.
Dimensions of Hatchway		4'-11" x 3'-11"	28" φ	20' x 16'	23.6' x 29'	39.3' x 29'	29' x 29'	23' x 23'	9'-0" x 16'-0"	27.2' x 27.2'		
COAMINGS	Height above Deck	39 3/8"	0"	6"	9"	9"	12"	9"	34"	24"		
	Thickness { Sides	.40"	.48"	.38"	.44"	.44"	.44"	.44"	.44"	.44"		
	Thickness { Ends	.40"			.44"	.44"	.44"	.44"	.44"	.44"		
	Stiffeners	Vert. 4" x 40"			E.W. similar.							
HATCH BEAMS	Number											
	Spacing											
FORE AND AFTERS	Number											
	Spacing											
HATCH COVERS	Material											
	Thickness		.50"	.40"			.32"		.40"	.32"		
HATCH COVERS	How fitted	stiffened							stiffened			
	Bearing Surface											
Spacing of Cleats												
Number of Tarpaulins												

\*Are wood fore and afters steel shod at all bearing surfaces? ☒ Yes

Are battens and wedges efficient and in good condition? ☒ Yes

Are tarpaulins in good condition and in accordance with rule requirements? ☒ Yes

Are lashings provided in accordance with rule requirements? ☒ Yes

Particulars of any special features:—

Vessel part electrically welded including butts of shell and deck plating.

Displacement in salt water and tons per inch immersion:—

Moulded draught.	Displacement	Tons / inch.
75% = 27.56'	19590 tons.	65.40
80% = 29.40'	21040 tons.	66.0
85% = 31.24'	22500 tons.	66.65
90% = 33.08'	23975 tons.	67.30

Endorsement at first survey and at surveys for renewal of Certificate:—

The fittings and appliances are in accordance with the particulars shown on this form (or as now modified) and are in good condition.

RETAIN



© 2020

Lloyd's Register Foundation