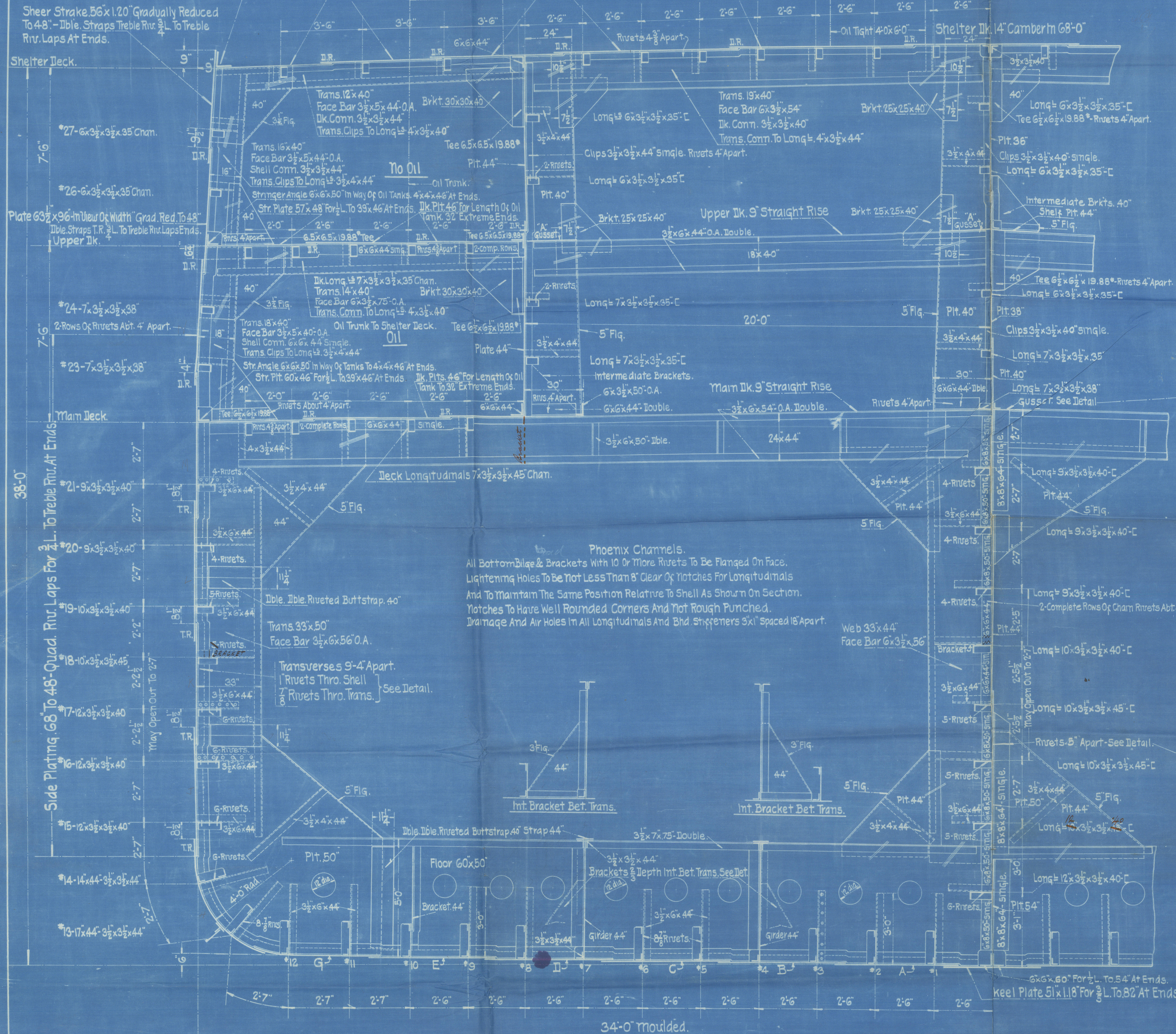


2-Stringer Plates 60"x78" For $\frac{1}{2}$ L. To 39' At Ends.
Double Straps T.R. For $\frac{1}{2}$ L. To T.R. Buttlaps At Ends.
Stringer Angle 8"x8"x64" Gradually Reduced To 4"x4"x46" At Ends.

Deck Plating 52" For $\frac{1}{2}$ L. To 36" At Extreme Ends Not Less Than 46" In Way Of Exp. Trunk. One Strake 56" See Deck Plan.
Deck Longitudinals 6"x3 $\frac{1}{2}$ "x35" Channel.

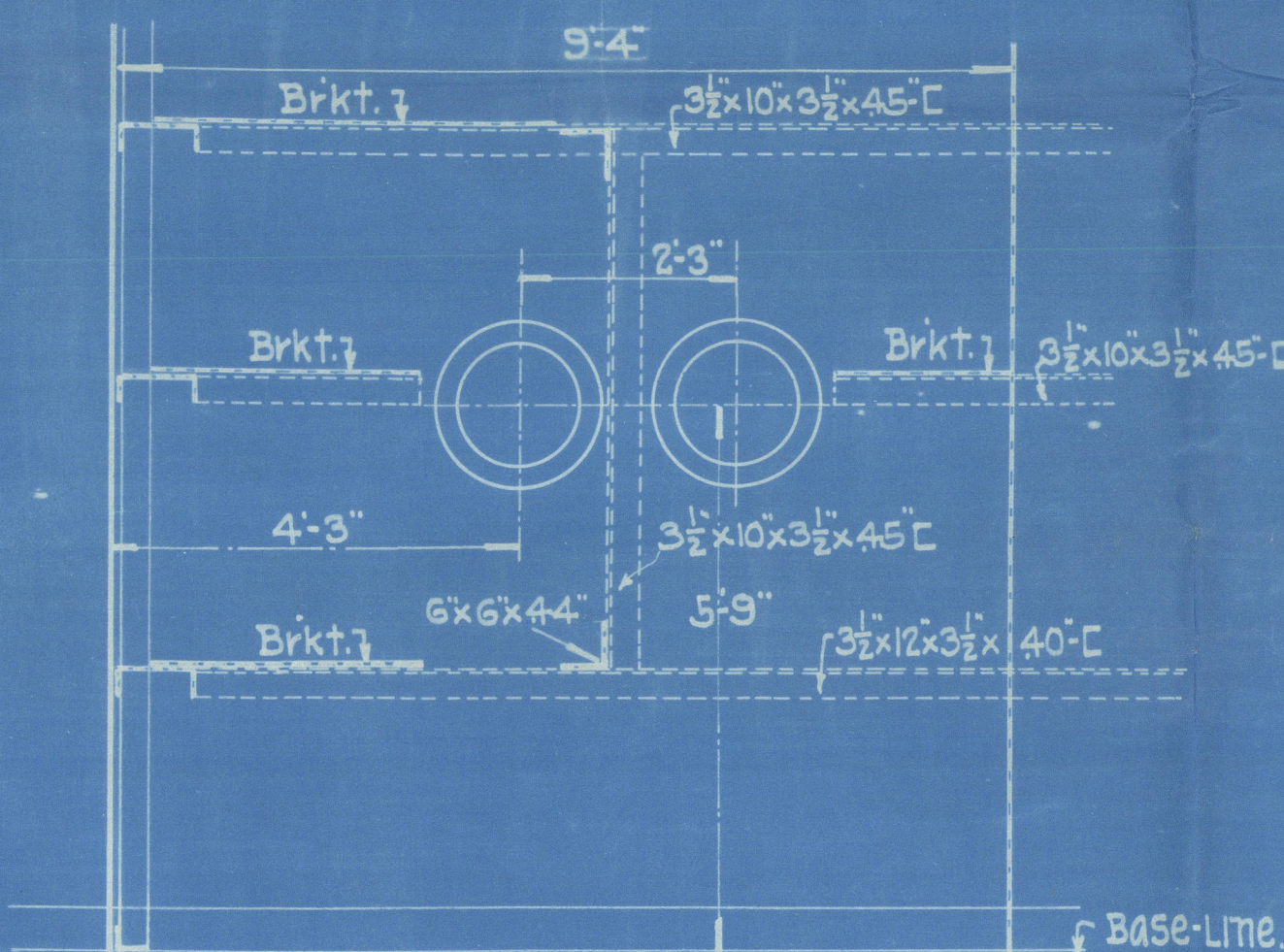


Riveting Schedule.

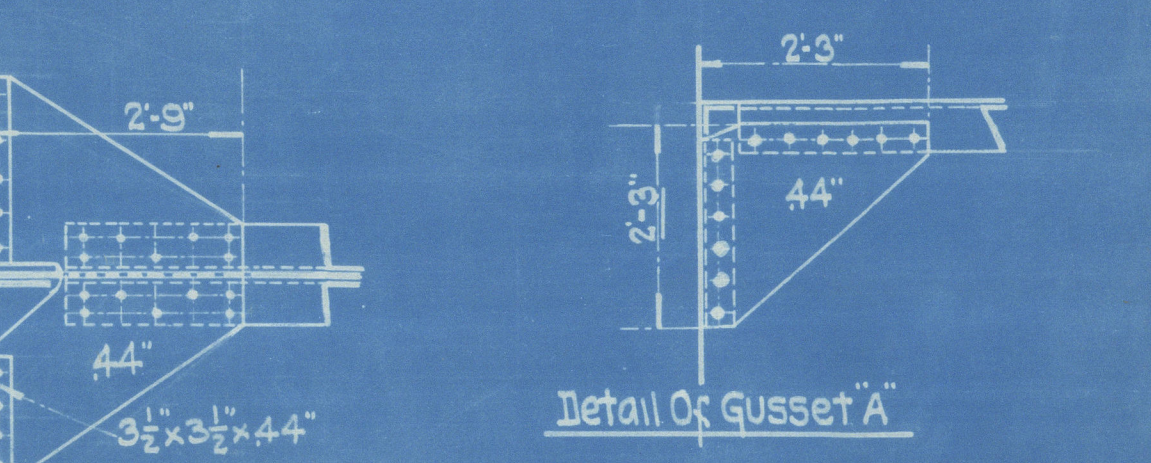
Shapes.
Shell Longitudinals: 1" 17" Inc. Riv. 3" Crs. For 9 Rivets Each Side Trans. & Bhd. 6" Crs. Elsewhere.
Shell Longitudinals: 21" 27" Inc. 6" Crs. For 9 Rivets Each Side Trans. & Bhd. 6" Crs. Elsewhere.
Shell Attachments Of Trans To Shell In Oil Tanks: 1" Rivets See Detail.
Shell Attachments To Trans. 2-Rows $\frac{1}{2}$ Rivets See Detail.

Plates

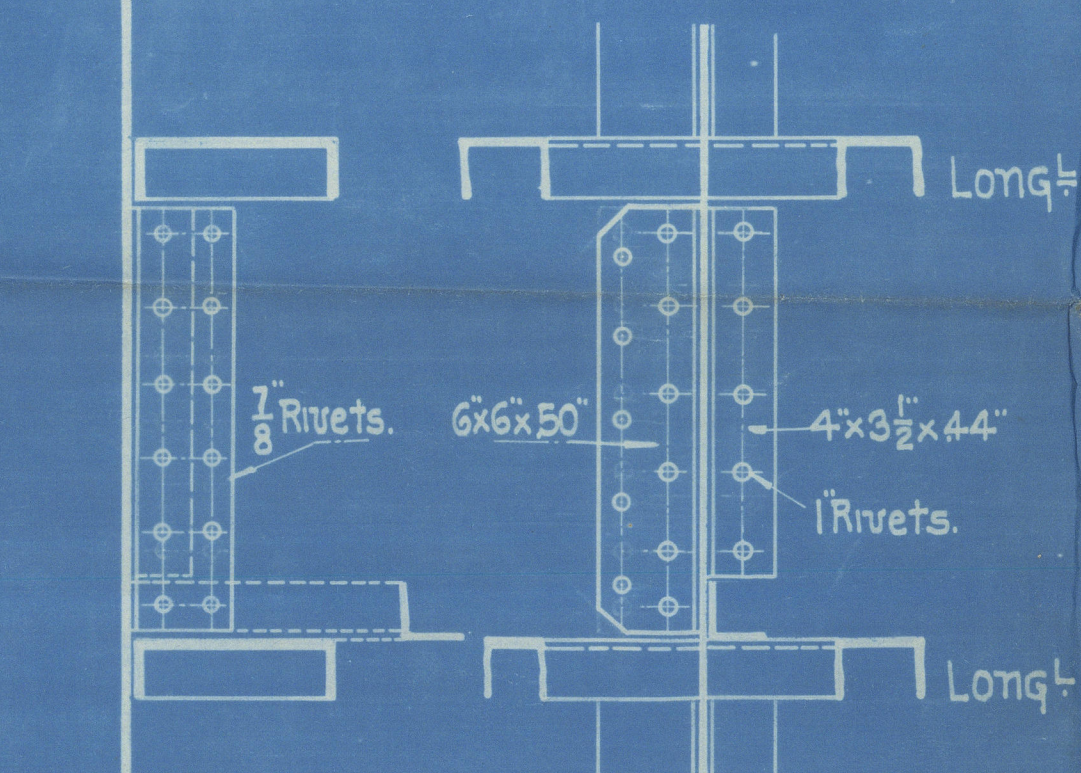
Sheerstrake: Double Straps Treble Riveted For $\frac{1}{2}$ L. To Rule At Ends.
Strake Below: Double Straps Treble Riveted For $\frac{1}{2}$ L. To Rule At Ends.
Side Shell - Quadruple Overlaps For $\frac{1}{2}$ L. To Treble At Ends.
Bottom Shell - Quintuple Overlaps $\frac{1}{2}$ L. To Treble Overlaps At Ends.
Keel - Double Straps Treble Riveted To Rule At Ends.
Shelter Iik. Stringers - Double Straps Treble Riveted For $\frac{1}{2}$ L. To Rule At Ends.
Shelter Iik. Plating - Treble Overlaps In Way Of Oil Comp. To Rule At Ends.
Upper Iik. Stringer - Treble Overlaps To Double At Ends.
Upper Iik. Plating - Double Overlaps In Way Of Oil To Single At Ends.
Second Iik. Stringer - Treble Overlaps To Double At Ends.
Second Iik. Plating - Double Overlaps In Way Of Oil To Single At Ends.
Center Girder Strake - Treble Overlaps Fore & Aft.



Section Showing Longitudinal Cut On Main Bhd. To Allow Cargo Oil Suction Pipes To Pass Through.



Detail Of Gusset "A"



Shell Connection To Trans. & Shell.

Lloyd's Numerals

Length	500'-0"
Breadth	68'-0"
Depth To Shelter Deck	38'-0"
Depth To Upper Deck	30'-6"
Transverse Tns 68+30.5 =	98.5
Longitudinal 7268+30.5x500=49250	
Proportions $\frac{1}{2} \times \frac{500}{38} =$	13.15
68+30.5x500 =	49250
Shelter Deck =	2812
Bridge House =	210
Casing & House At Side	168
Equipment Number	52440
1-Bow Anchor Stockless 90 Cuts.	
1-Bow Anchor Trotman's 72 Cuts. Exclusive Of Stock.	
1-Bow Anchor Trotman's 62 Cuts. Exclusive Of Stock.	
1-Stream Anchor Ordinary 26 Cuts. Exclusive Of Stock.	
1-Wedge Anchor Ordinary 2 Cuts. Exclusive Of Stock.	
300 Fathoms 2 $\frac{1}{2}$ Stud Link Cable.	
120 Fathoms 5 $\frac{1}{2}$ Steel Wire Rope.	
130 Fathoms 0 $\frac{1}{2}$ 3 $\frac{1}{2}$ Steel Wire Rope With Large Eyes On End And.	
2-Lengths 100 Fathoms 8 Manila Hawseers.	
2-Lengths 100 Fathoms 8 Manila Warps.	
2-Lengths Each 90 Fathoms 3 $\frac{1}{2}$ Pliable Wire Steel Hawseers With Large Eyes On End And.	
2-Lengths Each 90 Fathoms 7 $\frac{1}{2}$ Manila.	
4-Lengths Each 90 Fathoms 6 $\frac{1}{2}$ Manila.	

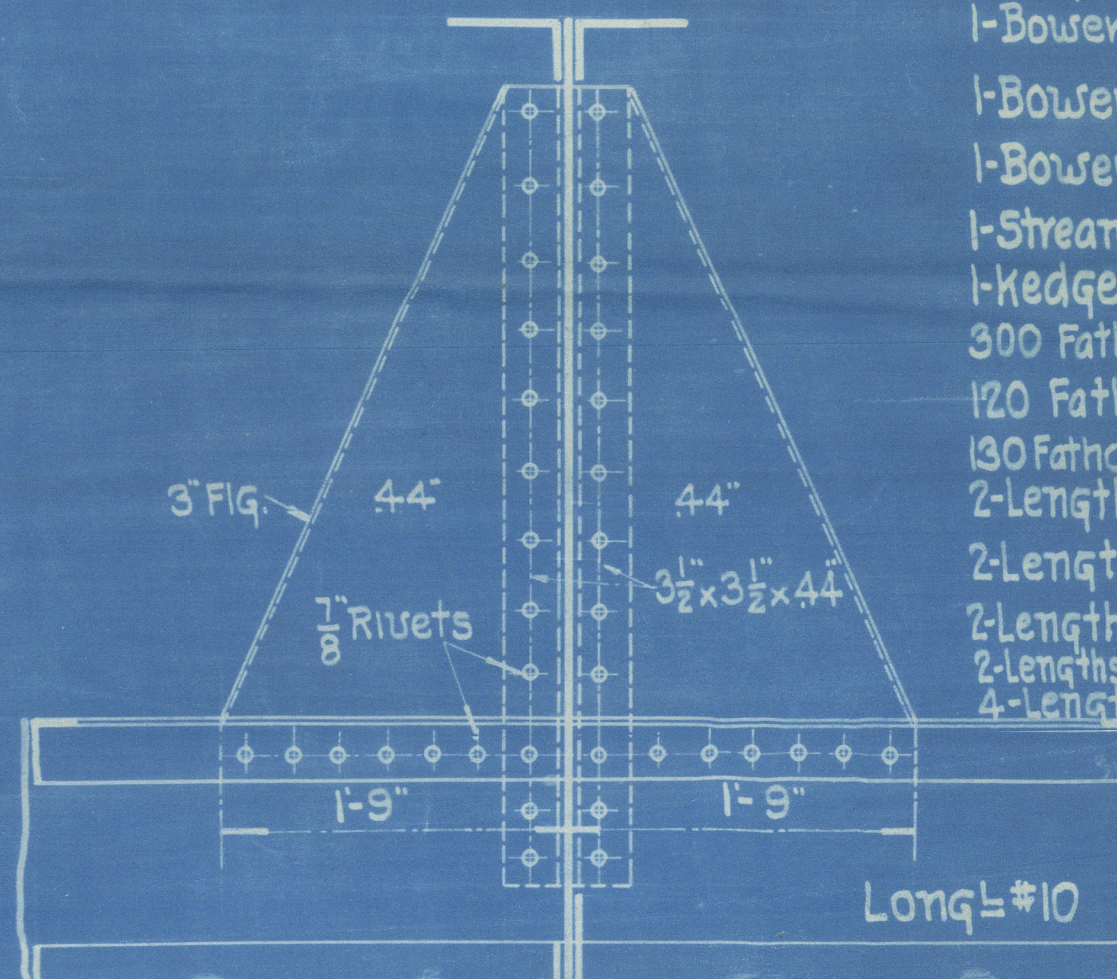
Cpy. Approved
H. 158-159
NEW YORK

GENERAL NOTE
DO NOT SCALE THIS DRAWING.
FOLLOW FIGURED DIMENSIONS.
REPORT ALL ERRORS TO DRAWING OFFICE

Maryland Steel Company.
Marine Department Sparrows Point, Md..
Standard Oil Steamers #158 & 9.
Midship Section.

Scale $\frac{1}{2}$ " = 1' Foot. Date Dec. 6, 1915

Drawn By R. J. Ortel. Approved.
Traced By "W. C. Chief Draftsman
Checked By "J. E. Chief Architect
Approved "Chief Engineer



Bracket Conn. Of Long. To Floor 25'-0" Of Ship.

Shell Connections 3 $\frac{1}{2}$ "x4"x44" & 6"x6"x50"
Bottom Longitudinals 17"x44" Plt. Mountings 3 $\frac{1}{2}$ "x3 $\frac{1}{2}$ "x44" Ang.
Bottom Plating 72" For $\frac{1}{2}$ L. To 52" At Ends.
Strakes On Flat Of Floor - 72" To Collision Bulkhead.

H. 158 - 159 - NO. 2

— Hulls N^o 158—159 —

— Midship Section —

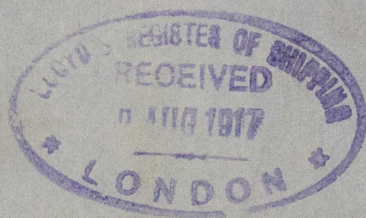
— Bethlehem Steel Coy —

— J. S. S. James N^o 158 —

— J. S. S. Eagle —

— Standard Oil Coy —

Baltimore Report N^o 2069
D^o D^o N^o 2142



W 986-0093



© 2020

Lloyd's Register
Foundation