

SHIP No 201.

PROFILE & DECKS.

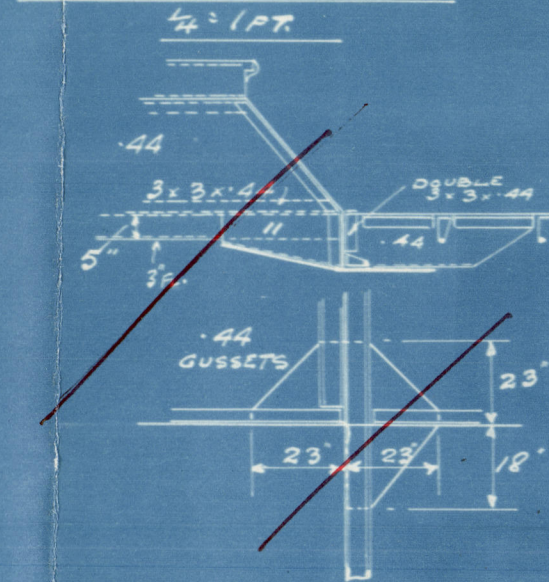
LENGTH L.W.L. 195'0"; BREADTH M.L.D. 32'1"; DEPTH M.L.D. 15'2 1/2" U.D. 19'6" R.D.

CLASS - LLOYDS + 100. A.I. FULL SCANTLING.

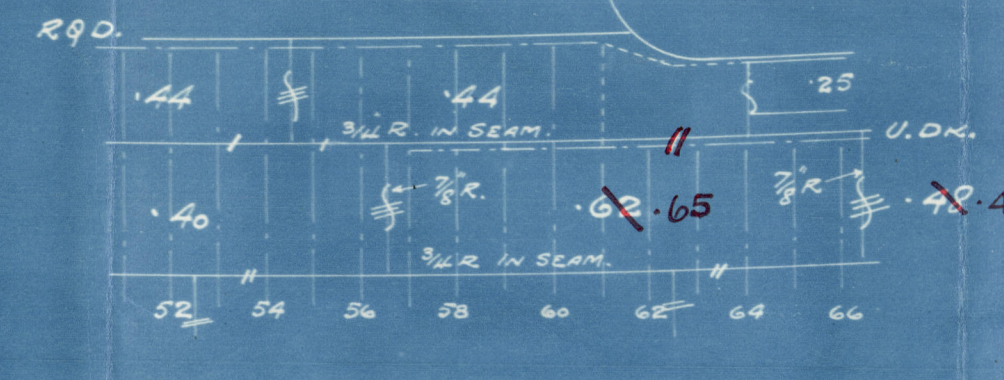
SCALE 1/8" = 1 FOOT.

ALL BULB ANGLES SHOWN ARE N.B.S.

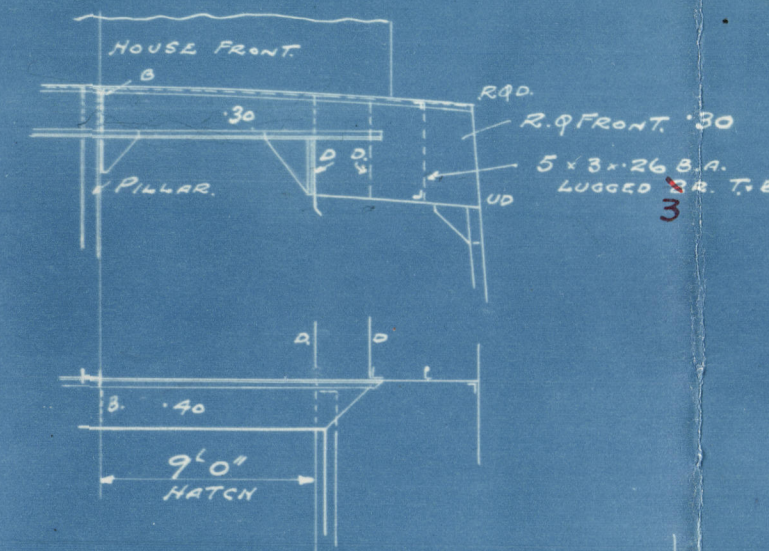
GUSSETS AT
H. ENDS 5'1" & 82.



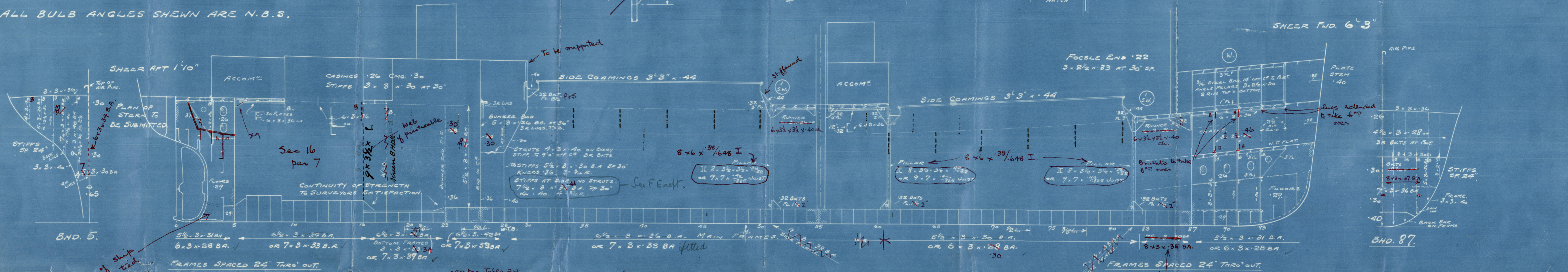
SHELL PLATING
AT BREAK.



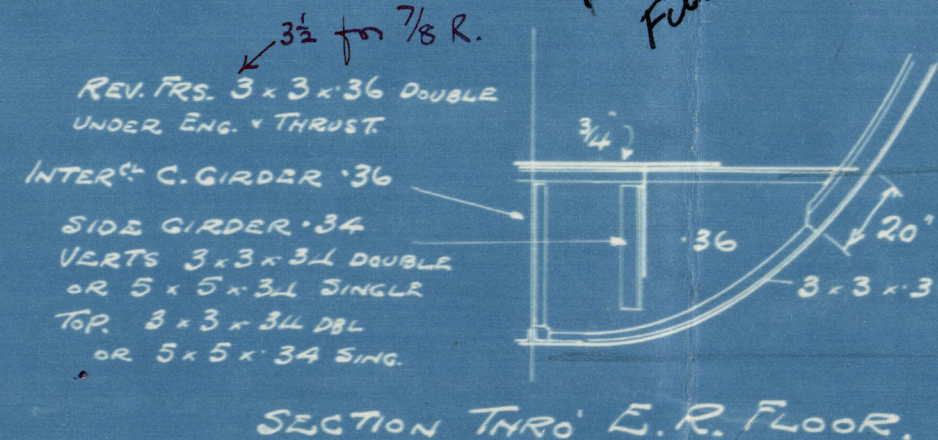
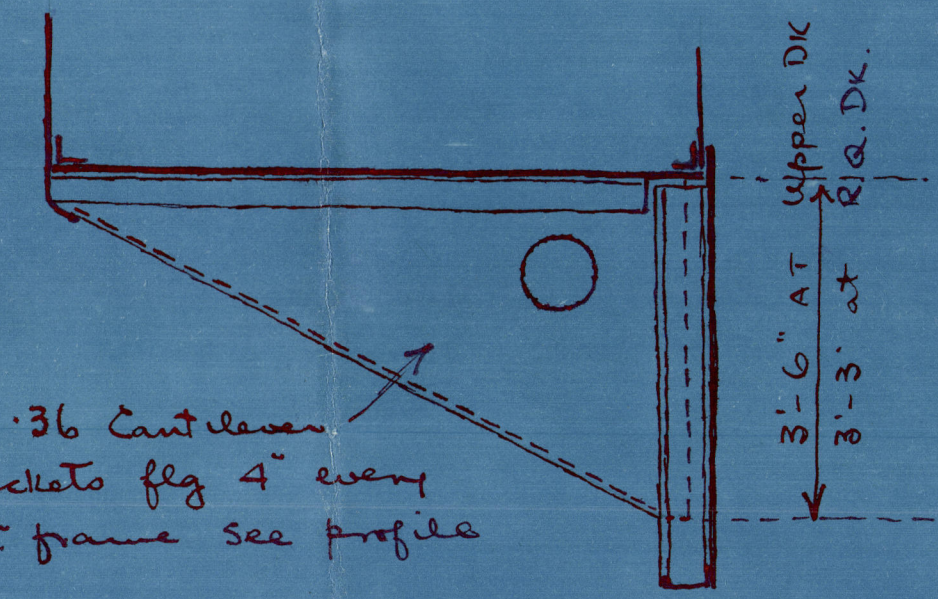
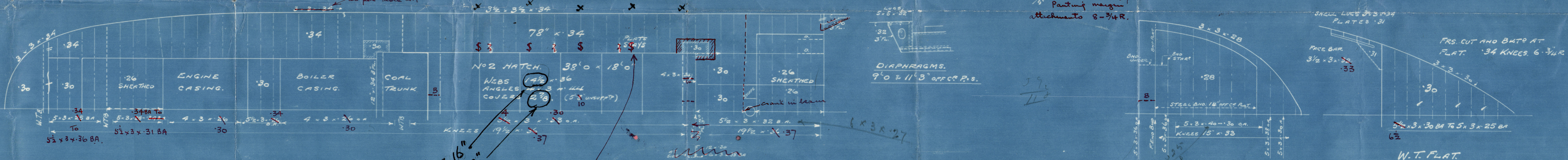
R. Q. DK. FRONT
ON FR. 61.



WINCHES, WINDLASS, STEERING GEAR, DECK HOUSES
& MASTS, SUPPORTED TO SATISFACTION
OF SURVEYORS.

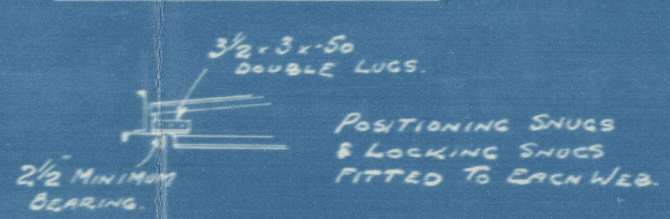


Side of ship
efficiently tied

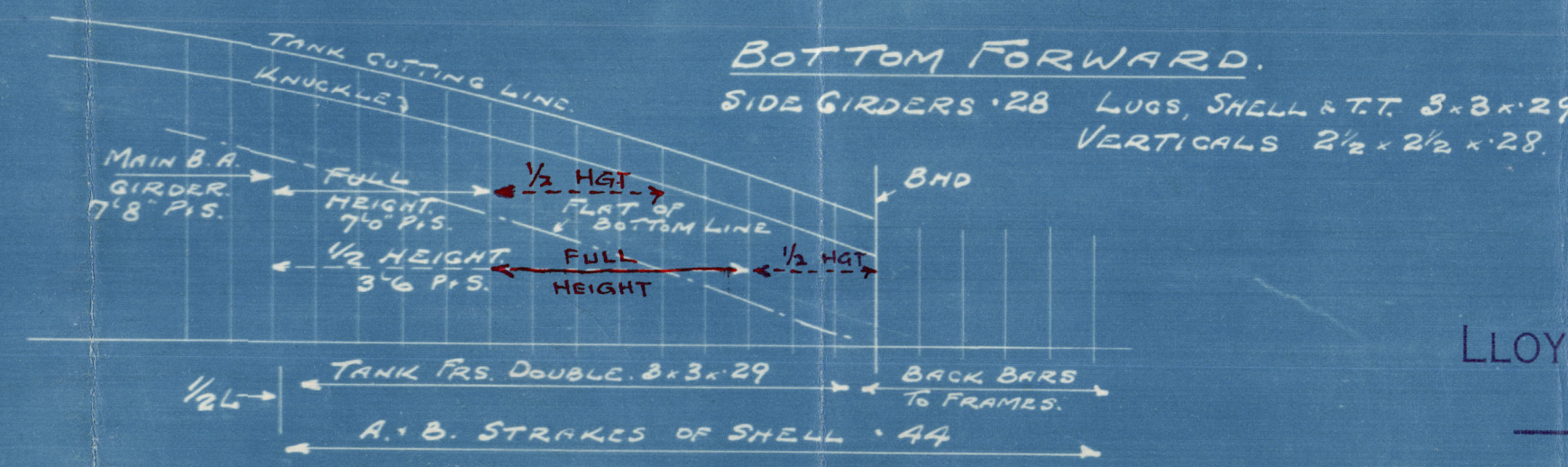


Suitable compensation to be
made to plate stays in way
of hole for passing through
steam pipes

HATCH WEB ENDS



Fitted 19"
Fitted 3"



APPROVED

LLOYD'S REGISTER OF SHIPPING

2.6.36



PLAN No P.9.

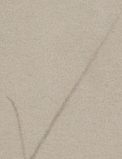
W985-0036

Burntisland SBC 12
N^o 201

Profile & Decks

s.s. "Jersey Queen"

Lth. Rpt. No. 19232.



RETAIN



© 2020

Lloyd's Register
Foundation

W986-0036