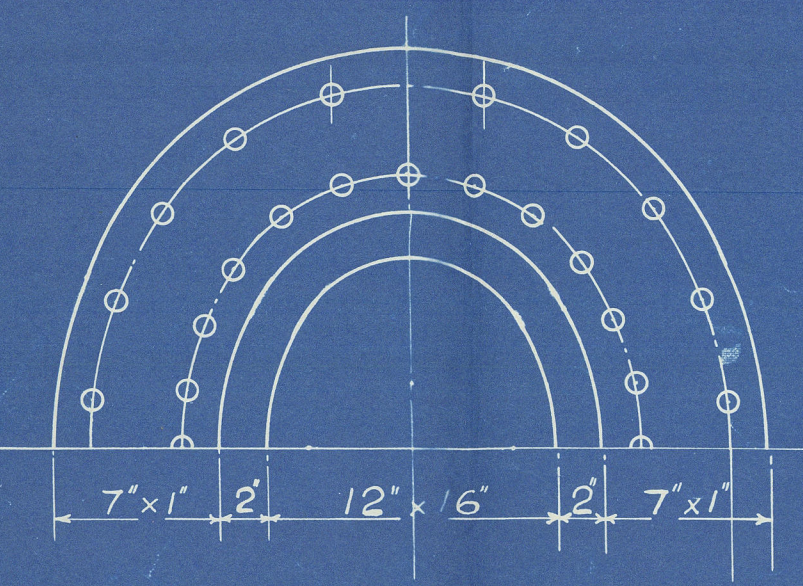


14 JUN 1931

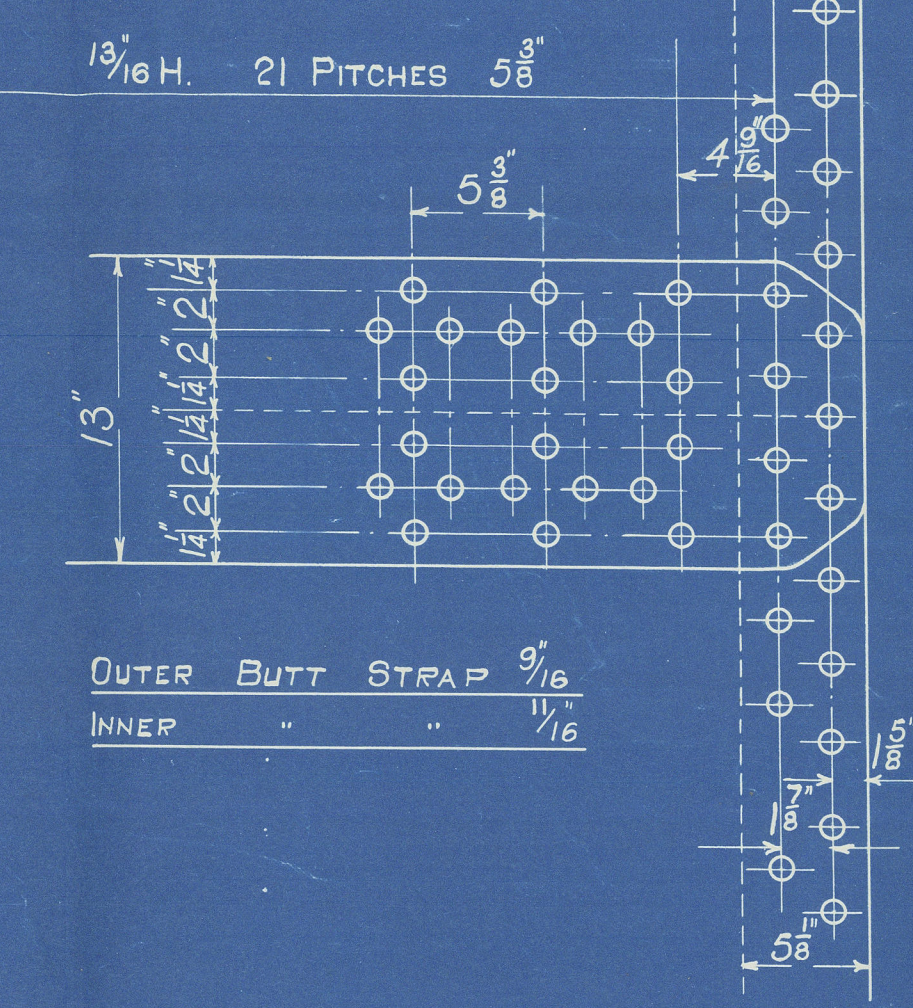
SPECIFICATION OF MATERIALS

SHELL & STRAPS.	29 - 33 TONS
GIRDERS & MAIN STAYS.	28 - 32 "
BALANCE OF PLATES, RIVETS & SCREW STAYS.	26 - 30 "



MANHOLE RING RIVETING.
4.4 HOLES $\frac{15}{16}$ " DIA. APT. $2\frac{3}{4}$ " P. IN INNER ROW.

SHELL RIVETING.
PLATE % 84-88.
RIVET % 83-88.

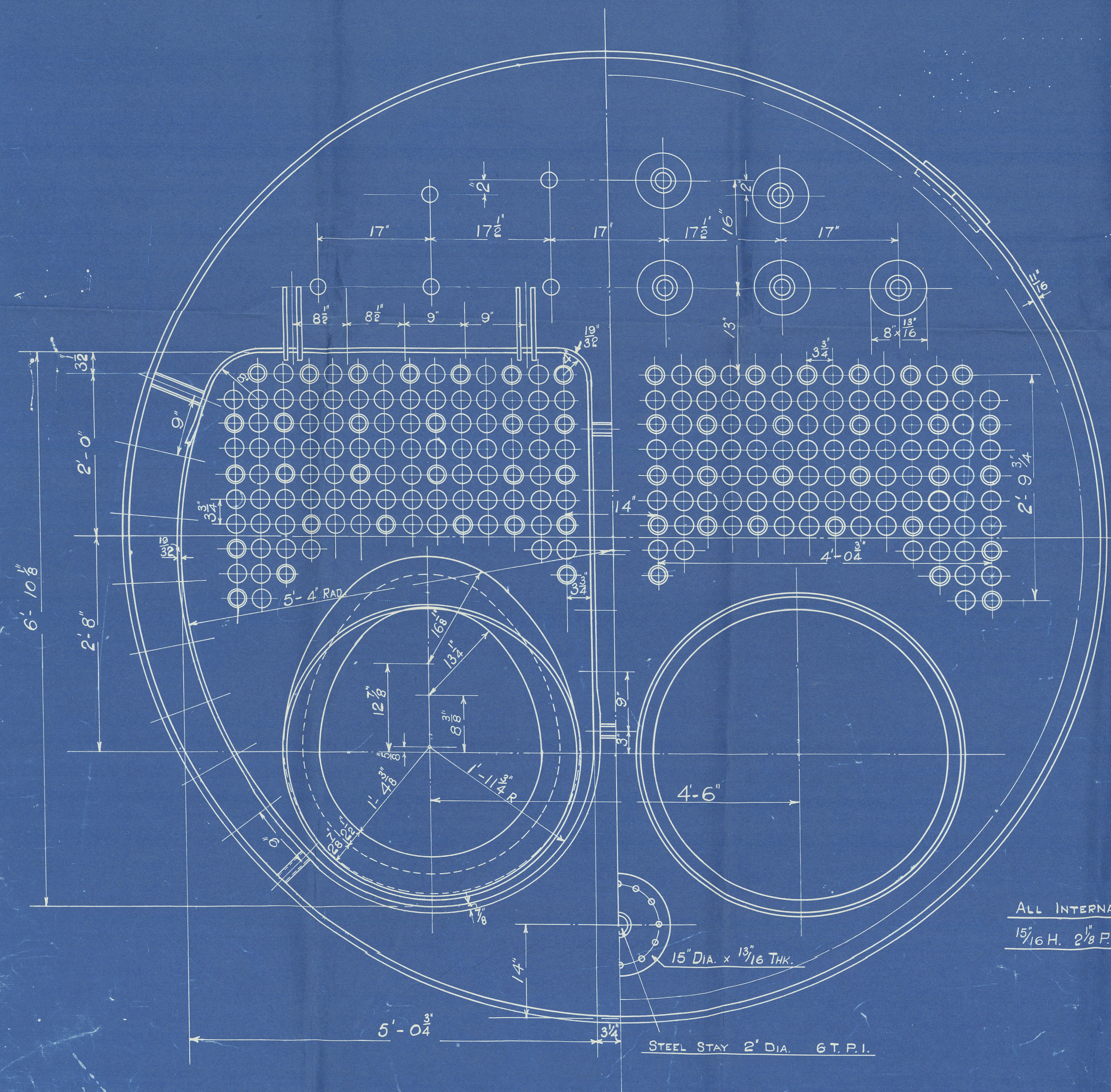


CIRCUM. SEAMS $\frac{1}{16}$ " H. $\frac{3}{8}$ " P. DOUBLE RIVETING.
CONTINUOUS BELOW $\frac{1}{2}$ " OF FURNACE.

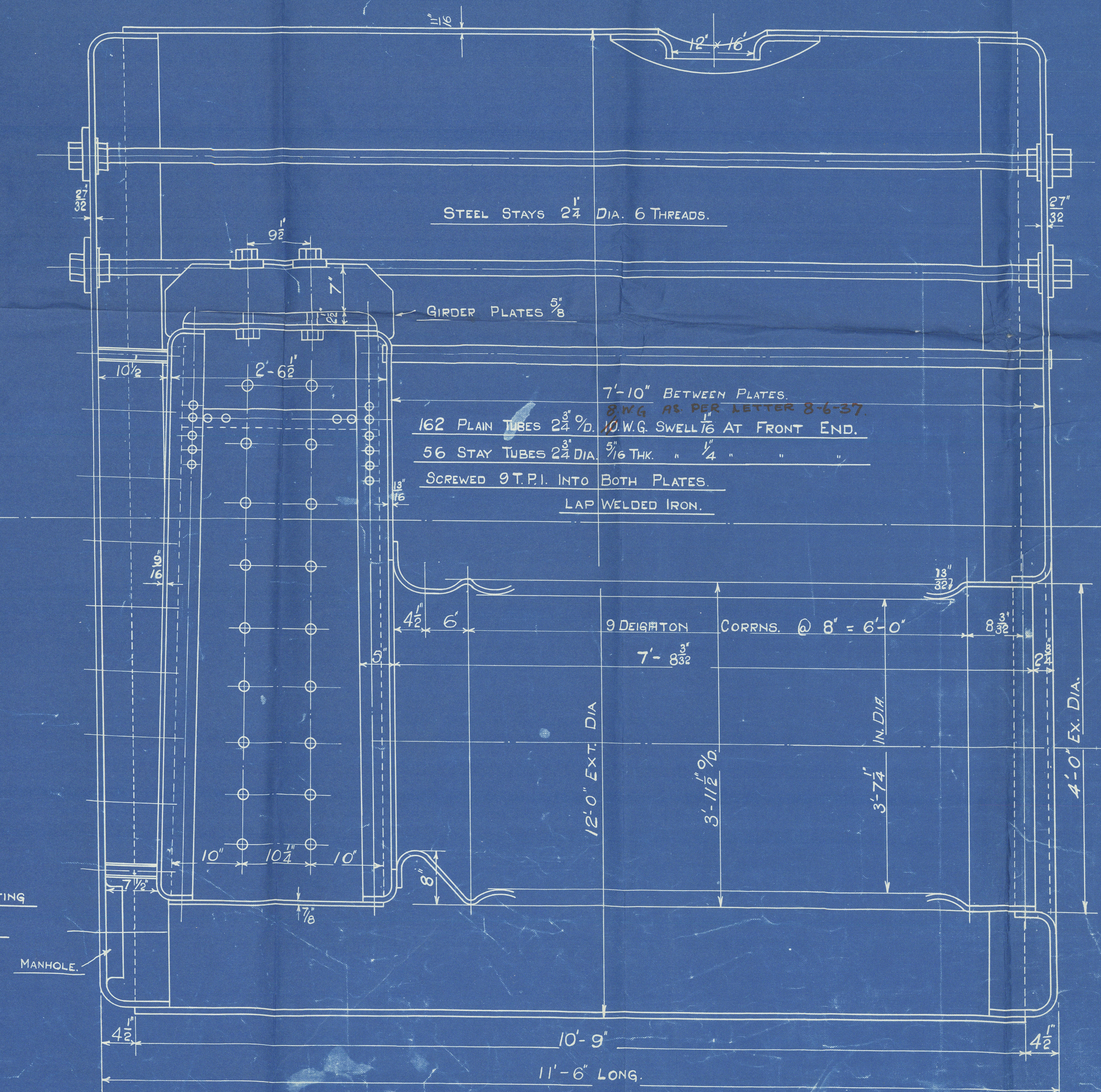
PLATE % = 68-51.
RIVET % = 45-45

SCREW STAYS.
9 T.P.I. NUTTED.

AT BACK MARK.	○	$\frac{1}{8}$ " DIA.
" " " "	●	$\frac{1}{8}$ " DIA.
" " " "	●	$\frac{1}{8}$ " DIA.
" SIDES.	●	$\frac{1}{8}$ " DIA.
" GIRDERS.	●	$\frac{1}{8}$ " DIA.



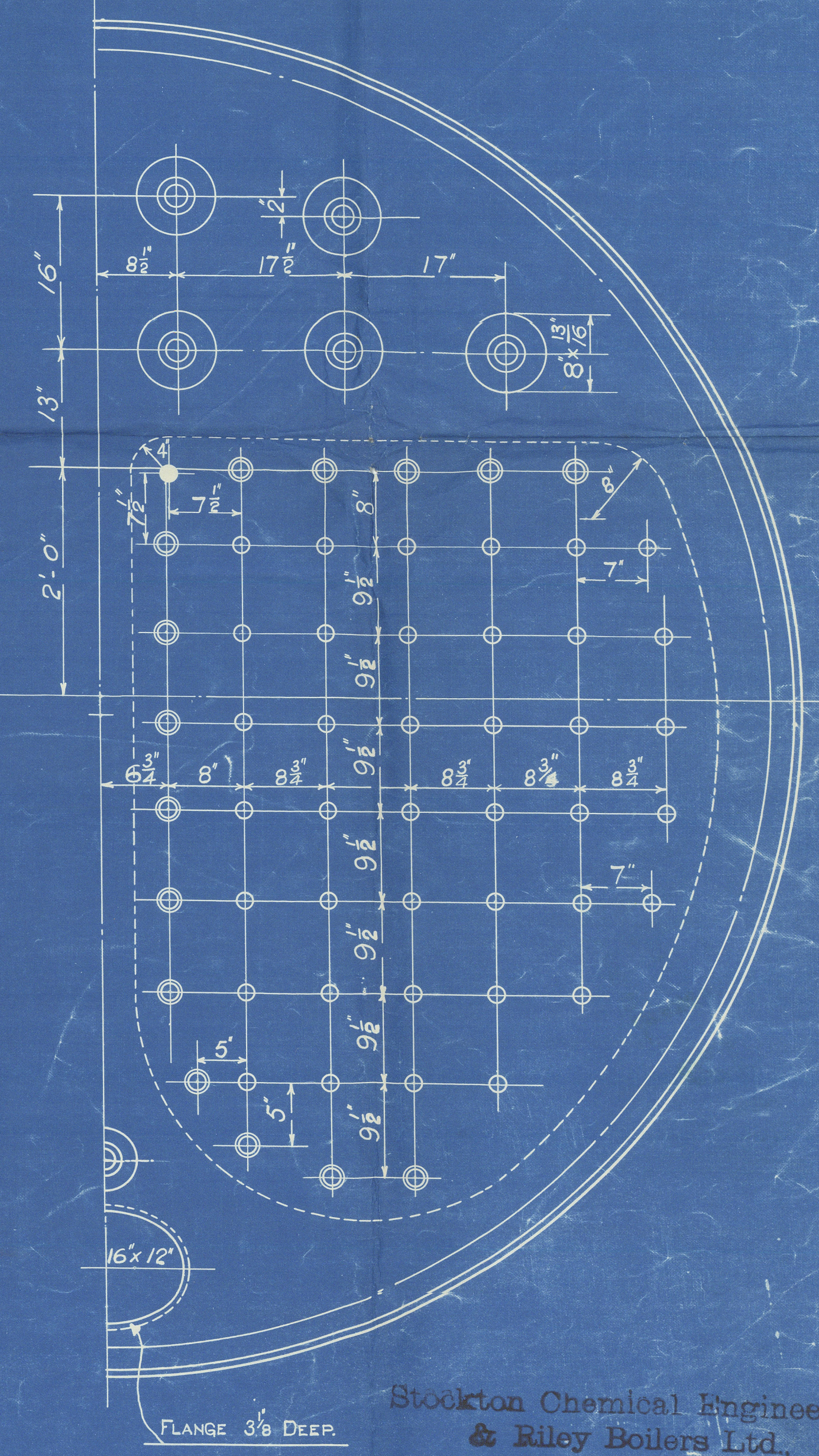
ALL INTERNAL RIVETING
 $\frac{15}{16}$ " H. $2\frac{1}{8}$ " P. 3" LAP



STEEL STAYS $2\frac{1}{2}$ " DIA. 6 THREADS.

GIRDER PLATES $\frac{5}{8}$ "

7'-10" BETWEEN PLATES.
8" P. AS PER LETTER 8-6-37.
162 PLAIN TUBES $2\frac{3}{8}$ " DIA. 10 W.G. SWELL $\frac{1}{16}$ " AT FRONT END.
56 STAY TUBES $2\frac{3}{8}$ " DIA. $\frac{3}{16}$ " THK. " $\frac{1}{4}$ " " "
SCREWED 9 T.P.I. INTO BOTH PLATES.
LAP WELDED IRON.



FLANGE 3" DEEP.

Stockton Chemical Engineers
& Riley Boilers Ltd.,
Stockton-on-Tees.

6092 6132 6250

STEEL BOILER 12'-0" O/DIA x 11'-6" LONG. - LLOYDS. - 120 LBS. W.P.

SCALE: 1" = 1 FOOT.

HEATING SURFACE = 1660 \square FT.
INCLUDING ALL FURNACES & C.C. PLATES. (OIL FIRED)

6-6-37

MADE.	DESCRIPTION.	DATE.	DRAWN BY:
			2020
			CHECKED BY:
			TRACED BY: C. BENNETT
			PASSED BY:

REC. NO 444

Stockton Chemical Engineers
& Riley Boilers Ltd.,
Stockton-on-Tees,

6256

W. Doxford's No 640

W483 - 0123

SUNDERLAND RPT. NO. 32378

"Lady Glanely"

Boiler

RETAILED



© 2020

Lloyd's Register
Foundation