

21.8.13.

MIDSHIP SECTION

STEEL SCREW TRAWLER

N^o 592

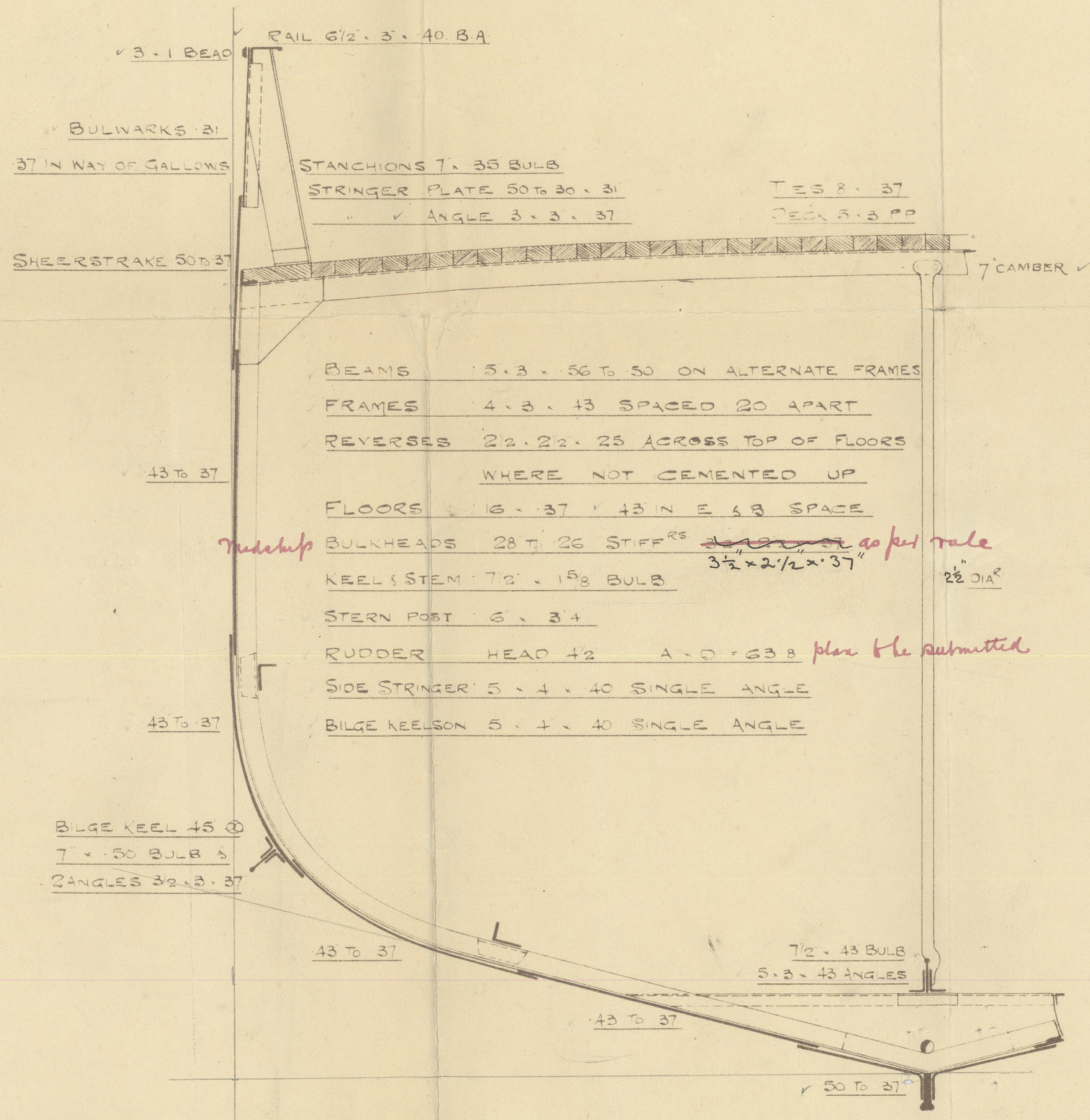
DIMENSIONS: 135-0 B.P. x 23-3 EXT x 13-4 MLD

SCALE 1/4 INCH

TO CLASS 100 A1 STEAM TRAWLER

DECK PLATED OVER IN WAY OF MACHINERY
E & B CASING AS PREVIOUSLY APPROVED.

PLAN No. 3255
FOR ENCLOSURE TO
Messrs Lloyd's Surveyors
Hull FROM
COCHRANE & SONS, LTD.
SHIPBUILDERS, SEELY.
DATE 19/8/13. *BSW*



NUMERALS

B + D = 36 + 58
L + B + D = 492 + 53
d = 12 1/2
B = 10 3/4

EQUIPMENT

ANCHOR 6 CWTs EX STOCK OR 7 1/2 CWTs STOCKLESS
52 7
3
120 FATHOMS 12 1/2 STUDLINK CABLE
60 6 HAWSER
60 5 WARP

RIVETING

BUTTS OF SHELL PLATING OVERLAPPED & DOUBLE RIV.
EXCEPT GARBOARD & SHEERSTRAKE WHICH ARE TO BE
STRAPPED & DOUBLE RIV.
LANDINGS DOUBLE RIVETED EXCEPT TOP EDGE OF
SHEERSTRAKE WHICH IS TO BE SINGLE RIVETED.
BULWARKS SINGLE RIVETED
RIVETS IN KEEL, STEM AND STERNPOST 1" DIA.
RIVETS IN SHELL 3/4 DIA.

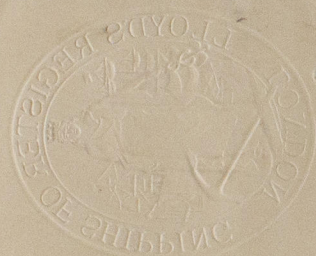
B.B.
21.8.13.

PHOTO PROCESSES



© 2020

Lloyd's Register
Foundation



LLOYD'S REGISTER
OF SHIPPING
20 AUG 1918
EX HULL



© 2020

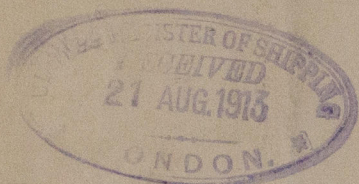
Lloyd's Register
Foundation

Cochrane & Sons, Ltd

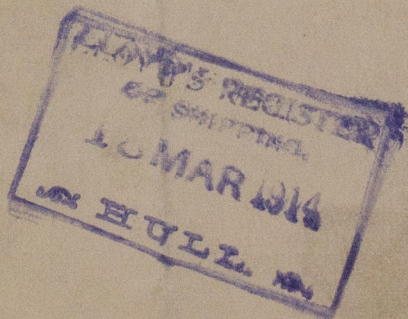
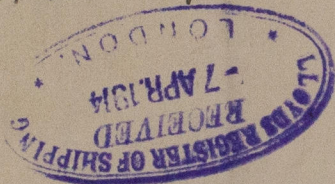
Nº 592.

Midship Section.

Dimensions
135-0 x 23-128 x 13-33.



s/s Angelus
Hull Rps No 27315



© 2020

Lloyd's Register
Foundation

W982-0209