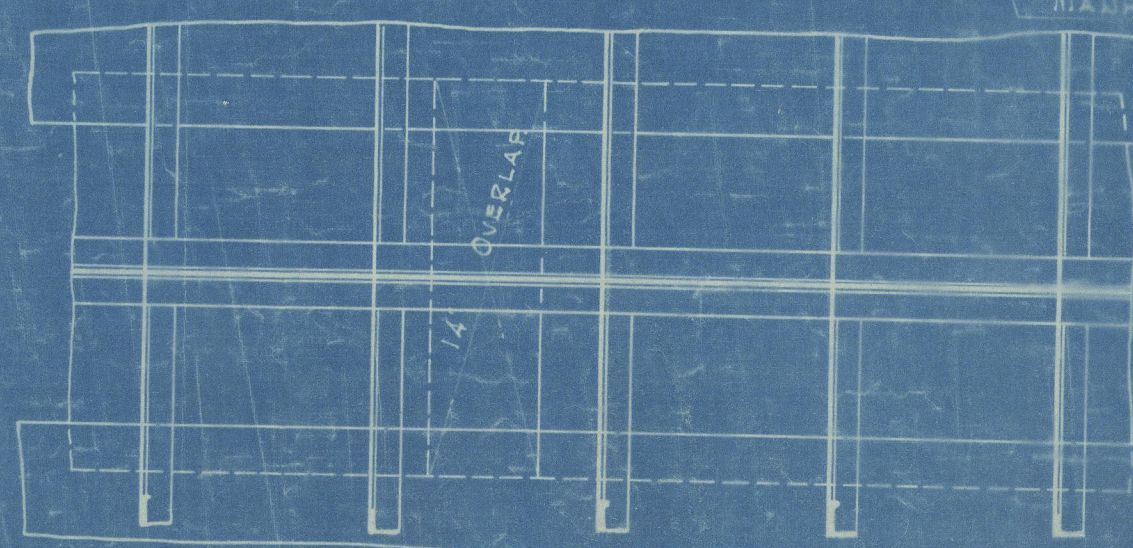
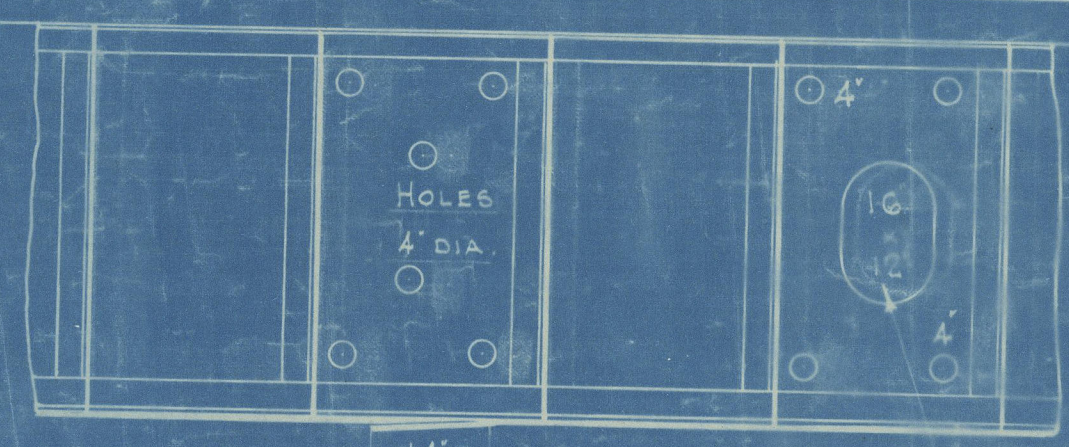




BRIDGE DECK HATCH 20'-0" WIDE





GLASGOW

D. & W. Henderson & Co. Ltd

No. 931M.

"LOCH LOMOND"

MIDSHIP SECTION  
AS BUILT.

GLASGOW REPORT No. 54981

RETAIN



© 2020

Lloyd's Register  
Foundation

W982-0045