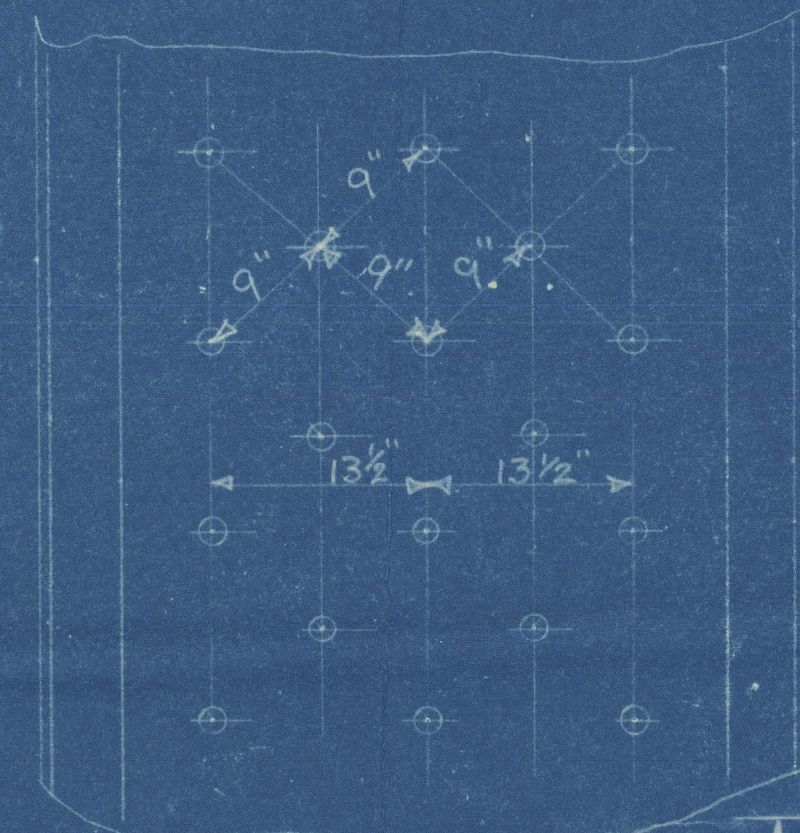
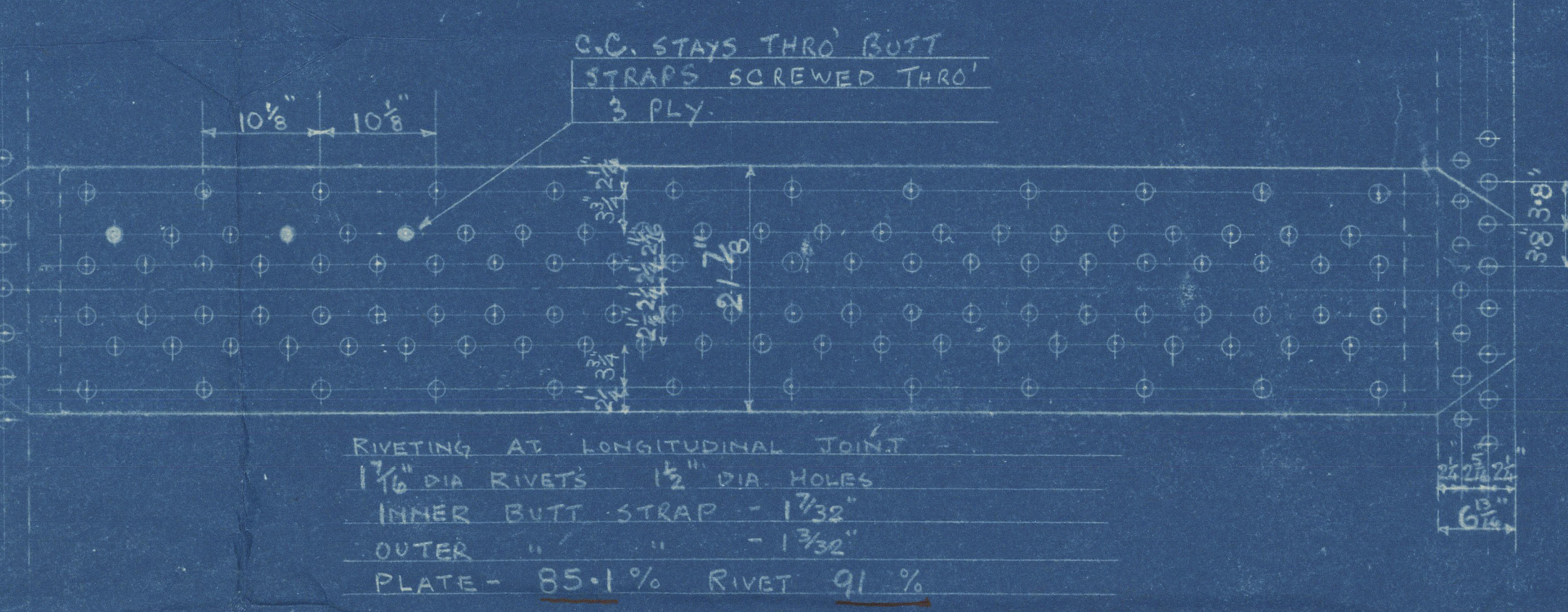


PARTICULARS OF ONE BOILER		
HEATING SURFACE IN TUBES	1453#	
" " " 3 CORR. CHAMBS	310	
" " " 3 FURNACES	130	
" " " TOTAL	1893	
GRATE AREA (4'-0" BARS)	42	
AREA THRO TUBES		
RATIO H.S. G.A.	1-45	



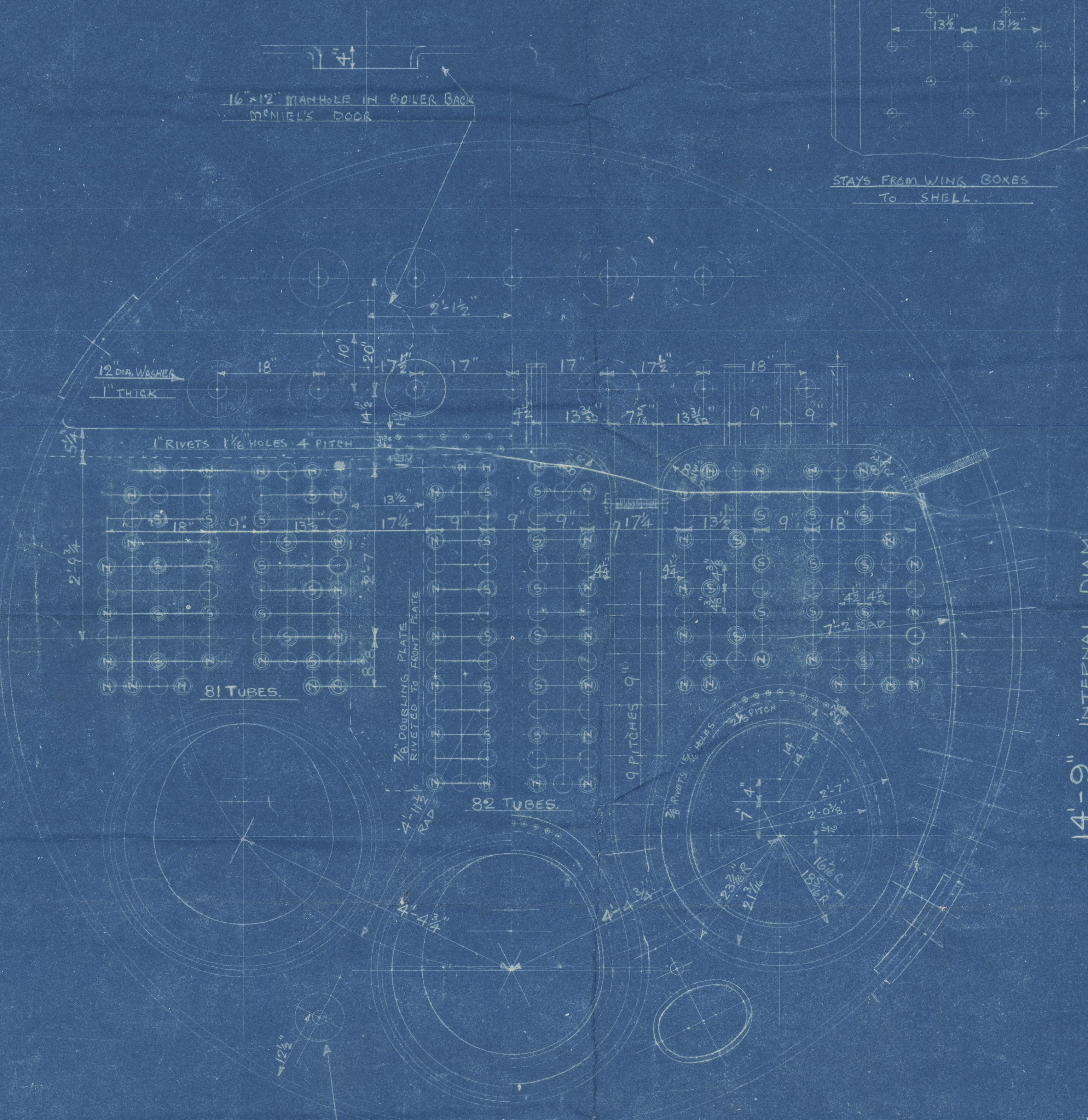
CIRCUM. SEAM. 1 1/2" RIVETS 1 1/2" HOLES
14-6 PITCHES IN CIRCUMF.
PLATE 60S 1/2 RIVET 5-1 7/8"



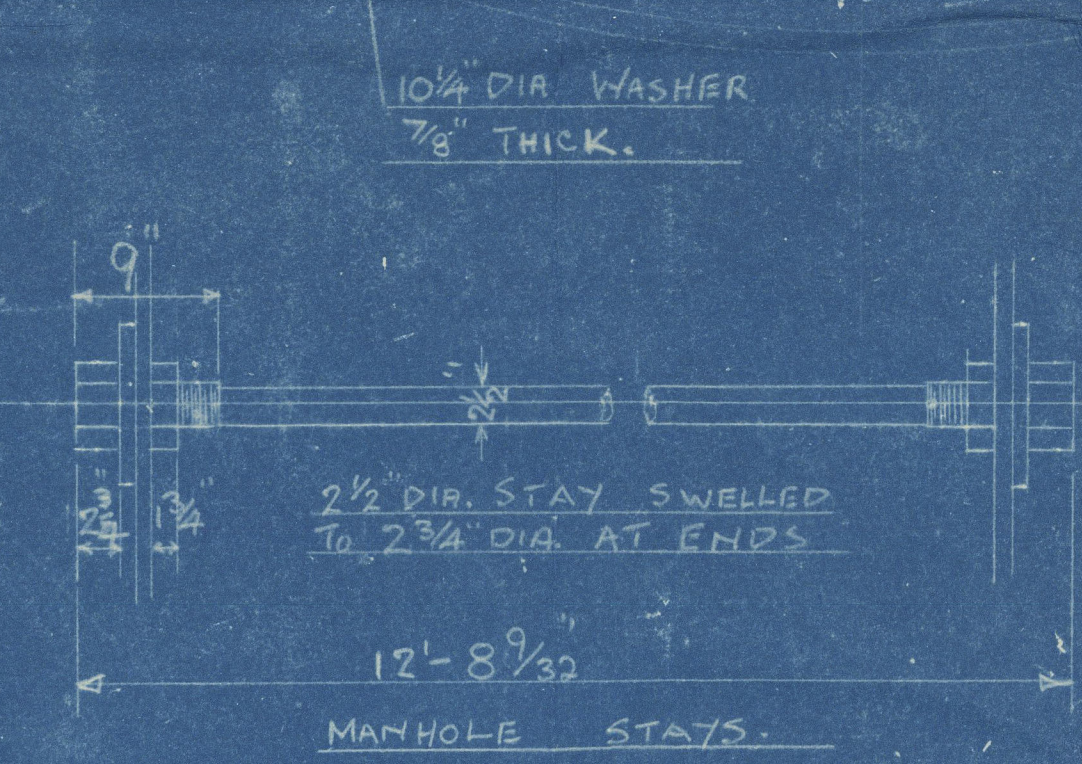
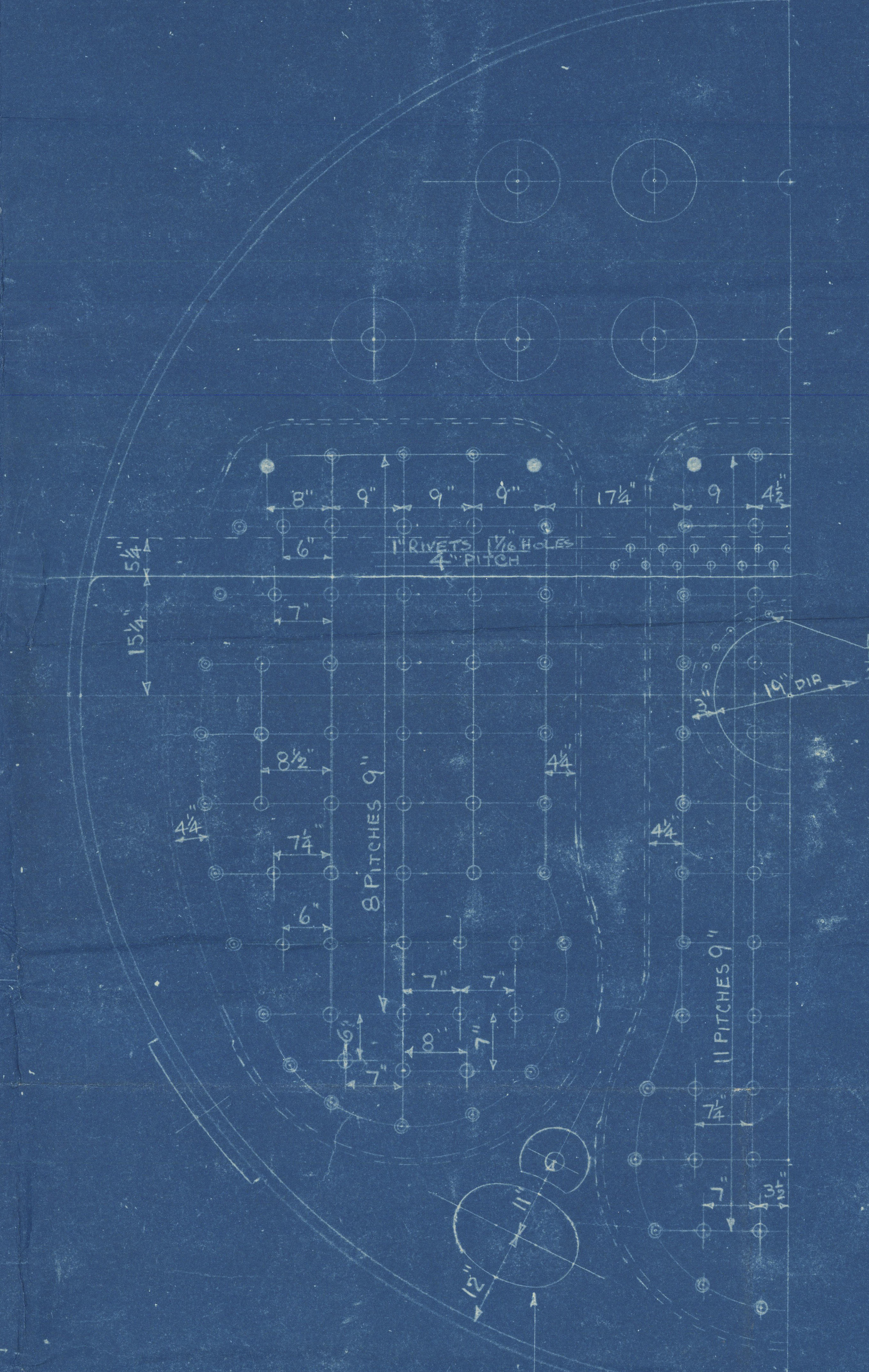
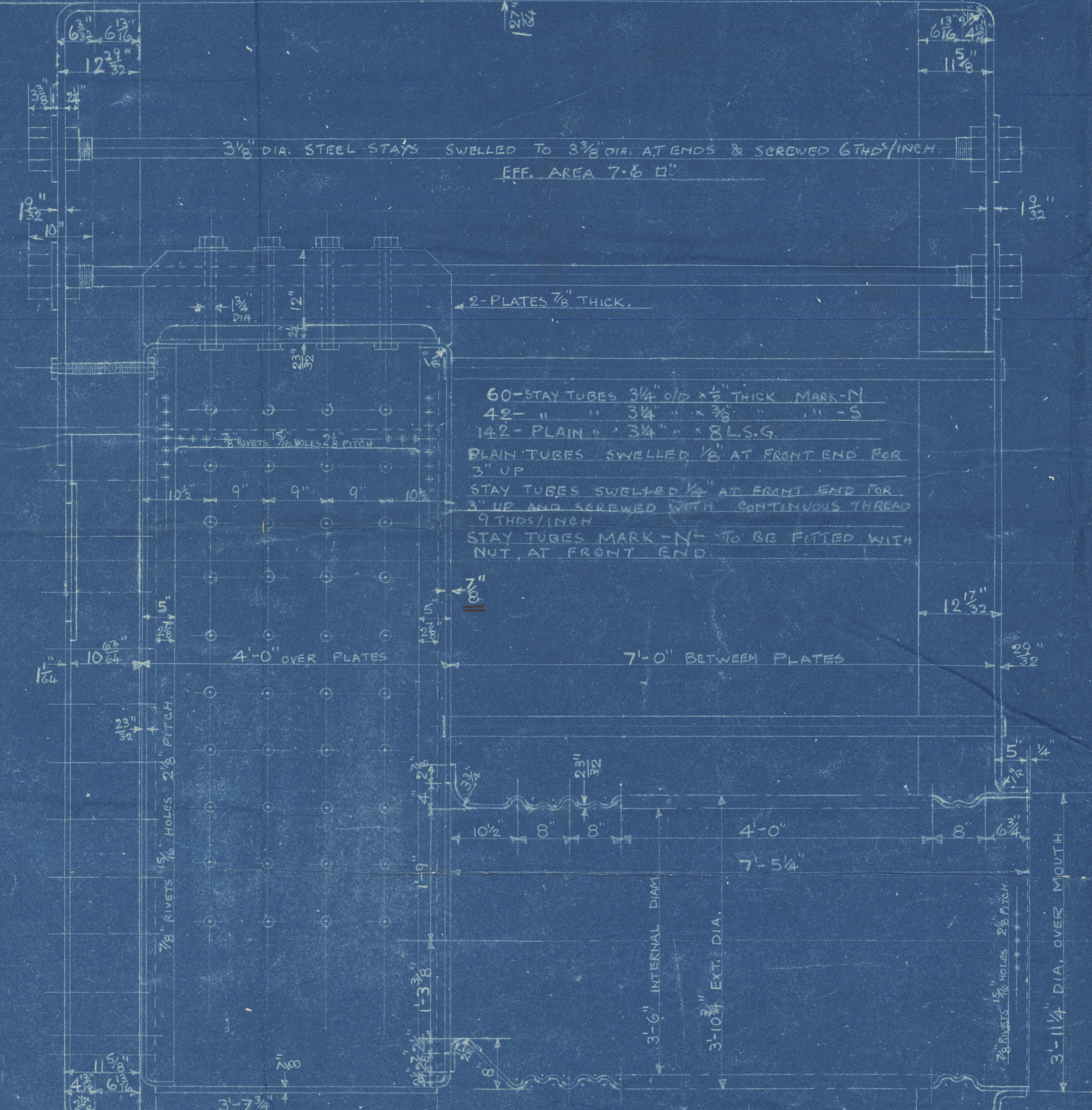
STRENGTH OF MATERIALS		
SHELL PLATES, BUTT STRAPS	29-33	SIEMENS MARTIN
3 CORR. CHAMBS, GIRDERS	26-30	MILD STEEL
OTHER PLATES	26-30	
FURNACES	26-30	
LONGITUDINAL STAYS	28-32	
C.S. SCREWED STAYS	26-30	
RIVET BARS	26-30	
TUBES - HOT-DRAWN WELDLESS STEEL		

CORR. CHAMBER SCREWED STAYS				
MARK	DIAM.	THDS. PER INCH	EFF. AREA	DEPTH OF NUT
1	2 3/8"	9	3.91"	1 1/8"
2	2 1/2"	9	3.09"	1 1/8"
3	1 3/4"	9	2.03"	7/8"

NOTE: - ALL FIRE BOX STAYS SCREWED THRO BOTH PLATES WITH NUT FITTED AT EACH END, EXCEPT STAYS FROM WING BOXES TO SHELL, WHICH PROTECT 3/8 THRO SHELL PLATE & ARE GAULKED.



14'-9" INTERNAL DIAM.



TO LLOYD'S SURVEY FOR A WORKING PRESSURE OF 220 LBS/SQ IN
HYDRAULIC TEST. " 380 " "

NO 931 M.
BOILER
3 - OFF.

SCALE: - 1" = 1 FOOT.

23-1-34

GLASGOW

D & W HENDERSON & CO^L

(3) BOILERS N^o 931

WP 220 LBS

AMENDED PLAN (15-2-34)

D & W HENDERSON & CO^L LTD

S/S N^o 931

Loch Lomond

GLASGOW REPORT No. 54981

RETAILED



© 2020

Lloyd's Register

For 2020 only