

SCOTIA ENGINE WORKS BOILER

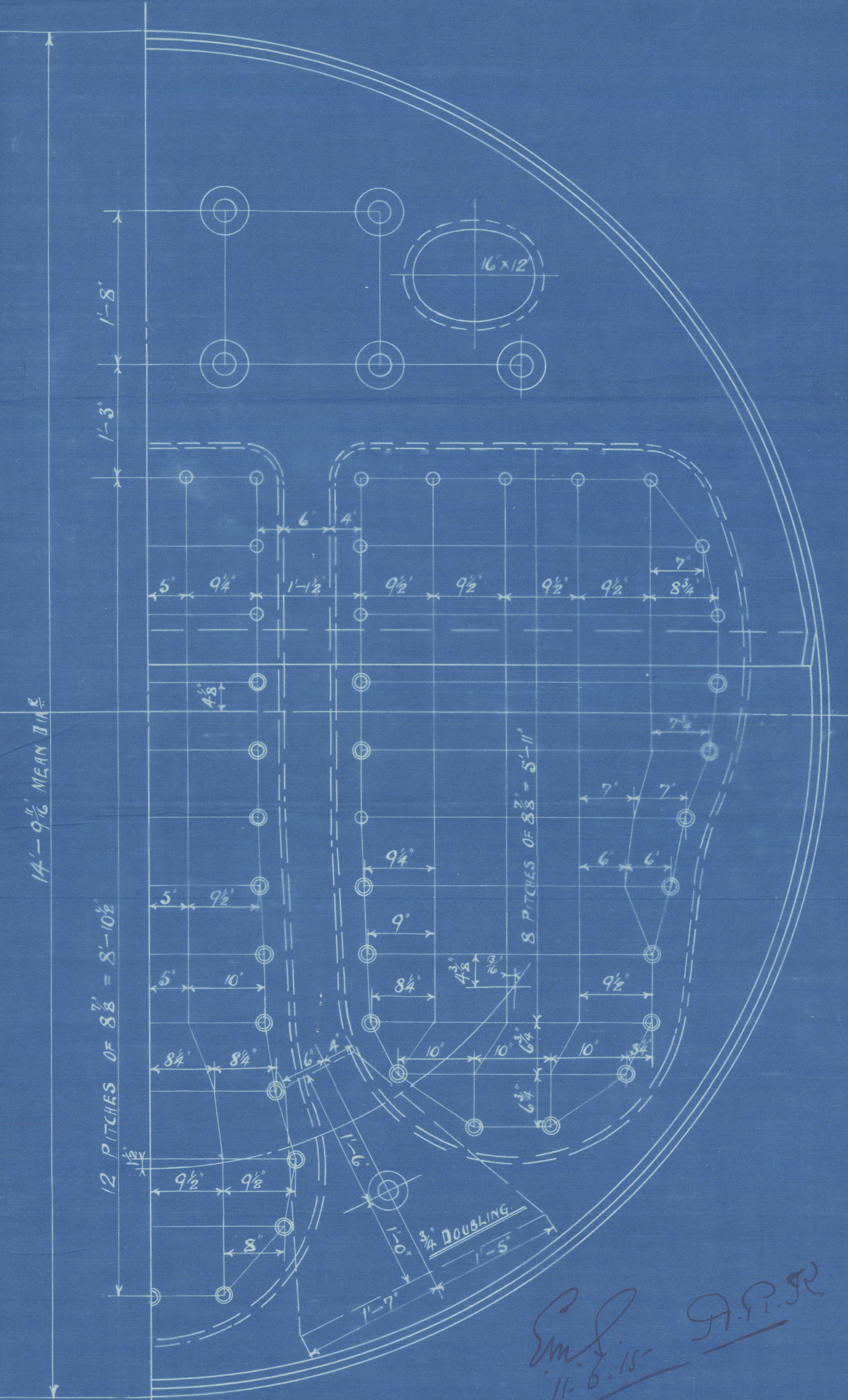
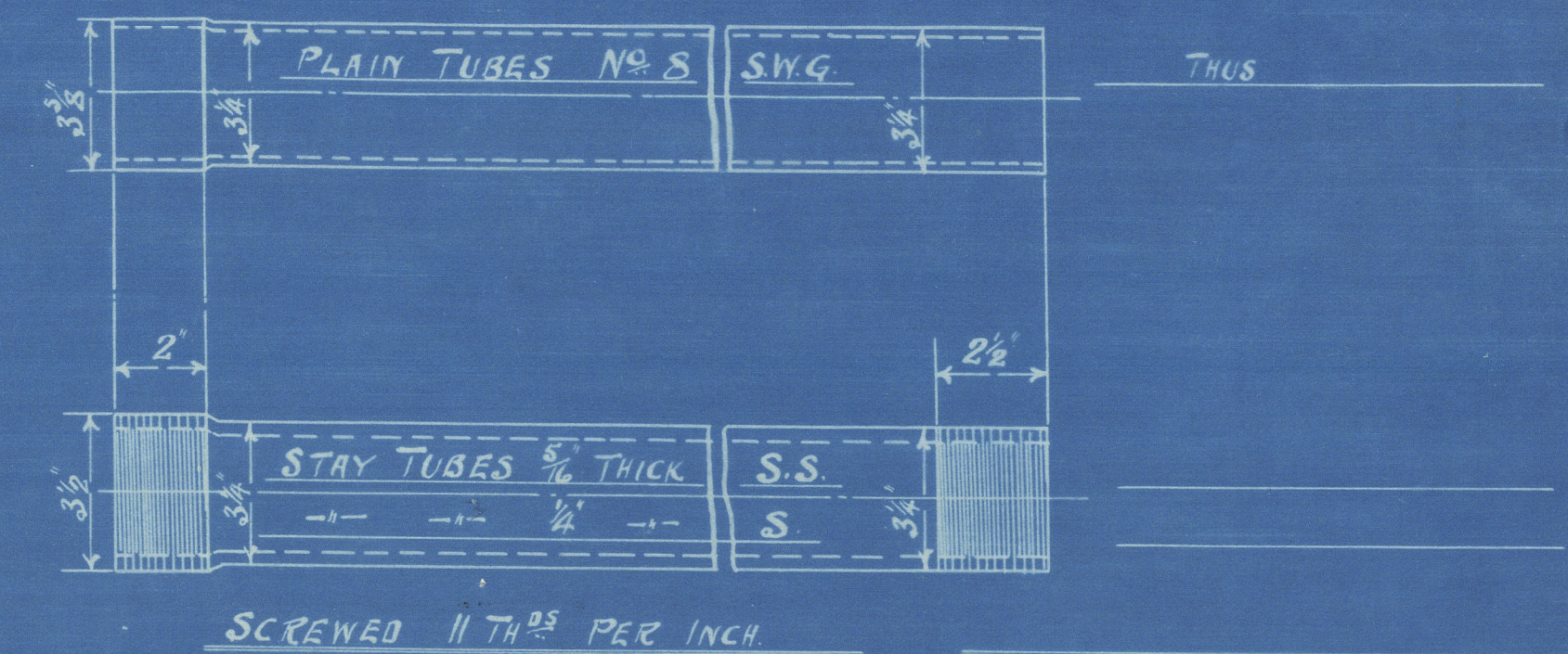
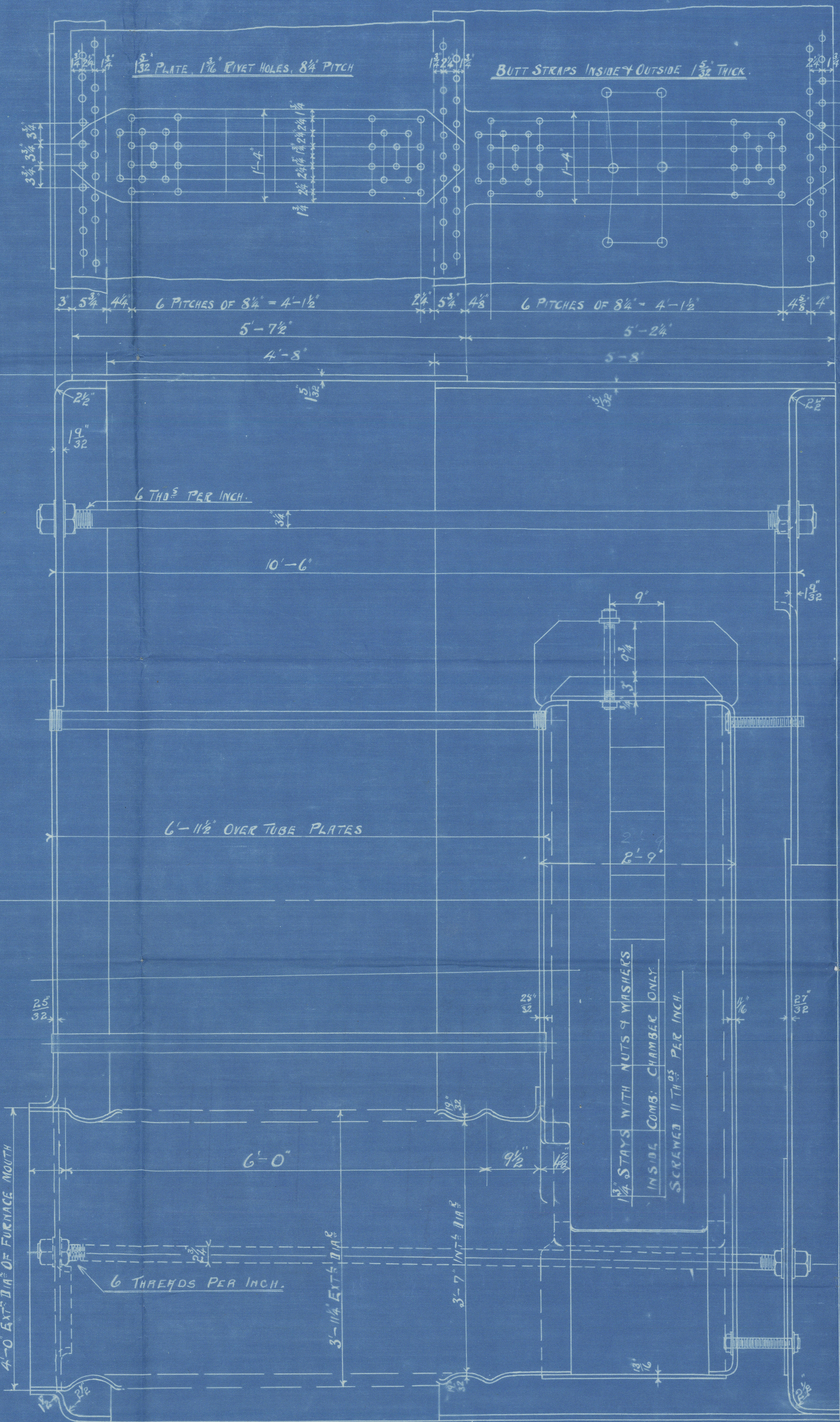
11/6/15

SCALE: 1 INCH TO ONE FOOT
WRITTEN DIMENSIONS ONLY TO BE TAKEN
WORKING PRESSURE 180 LBS PER SQ INCH.



TENSILE STRENGTH OF SHELL PLATES & BUTT STRAPS
28.9 TO 32 TONS PER SQ INCH
GIRDER PLATES & LONGITUDINAL STAYS
28 TO 32 TONS PER SQ INCH
ALL OTHER PLATES, STAYS & RIVETS 26 TO 30
ALL PLATES, STAYS & RIVETS OF STEEL
ALL TUBES OF WROUGHT IRON
ALL RIVET HOLES DRILLED IN PLACE
RIVETING HYDRAULIC

TOTAL HEATING SURFACE
WITHOUT FRONT TUBE PLATES 1114 ft²



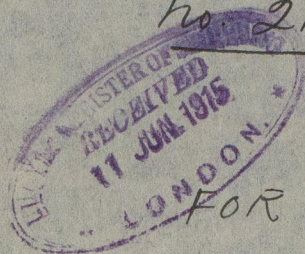
STAYS IN COMB. CHAMBER BACKS
1/2" STAYS WITH NUTS & WASHERS INSIDE COMB. CHAMBERS ONLY.
1/2" STAYS WITH NUTS & WASHERS INSIDE COMB. CHAMBERS ONLY.
1/2" STAYS WITH NUTS & WASHERS INSIDE COMB. CHAMBERS ONLY.
ALL SCREWED 11 THREADS PER INCH.

No S 2116
No OFF 2

Em. J. 11-6-15
Lloyd's Register Foundation

Richardsons Westgarth & Co

No. 2116 (2 of)



North of Ireland S.B. Co. L

S/S "Alto."

S.S. No. 64

Belfast No 7639.

Working Pressure 180 lbs \square

Mark on boiler :-

No. 3314
LLOYD'S TEST
360 lbs.
15.9.15 J.T.F.

S.S. "Alto"

SUNDERLAND RPT. No. 26581

W980-0128