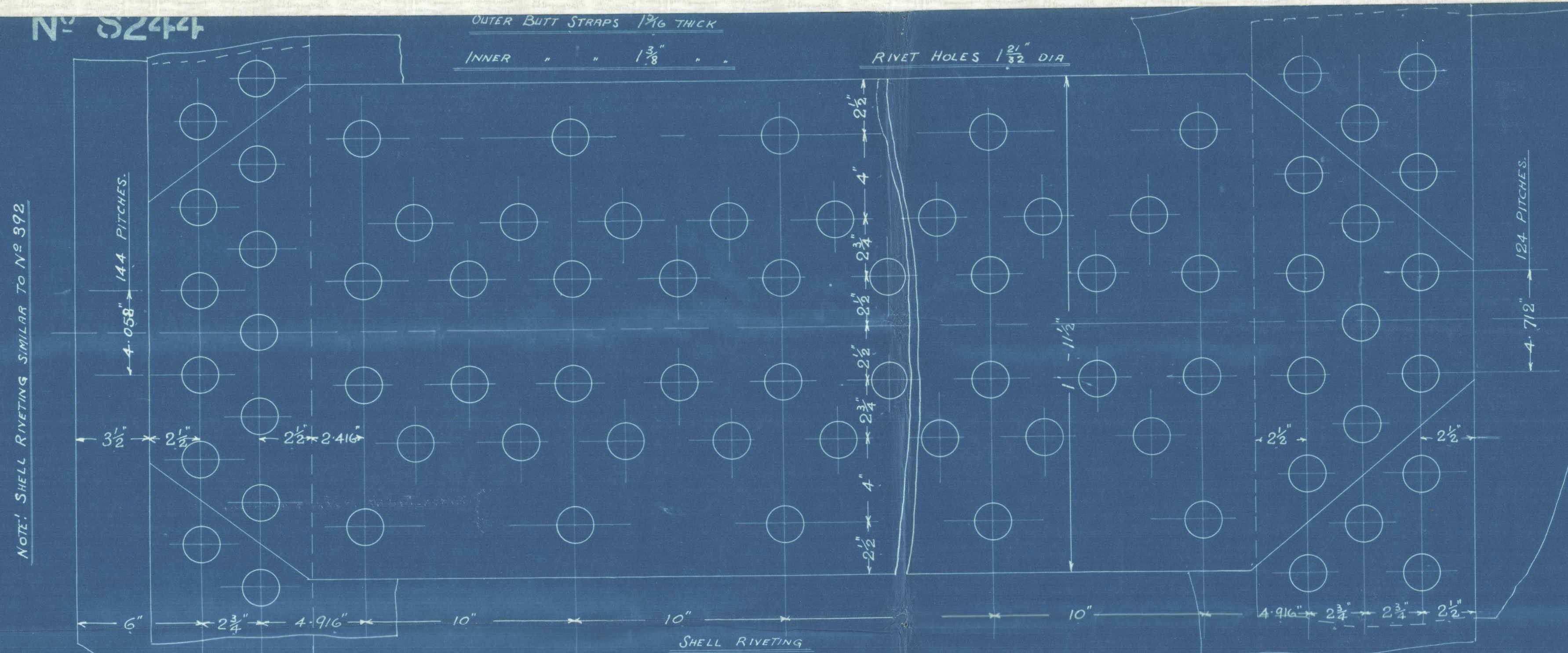
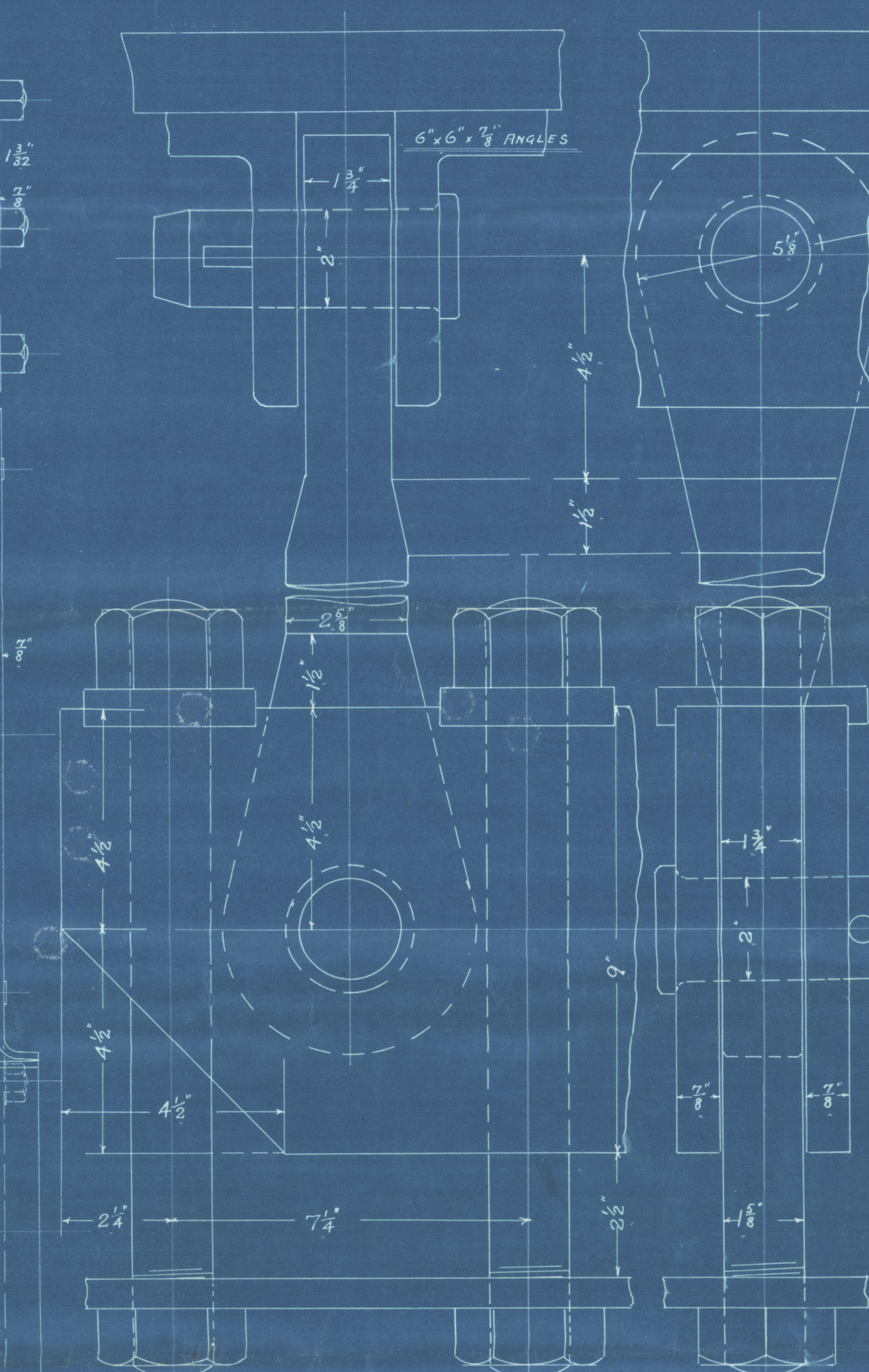
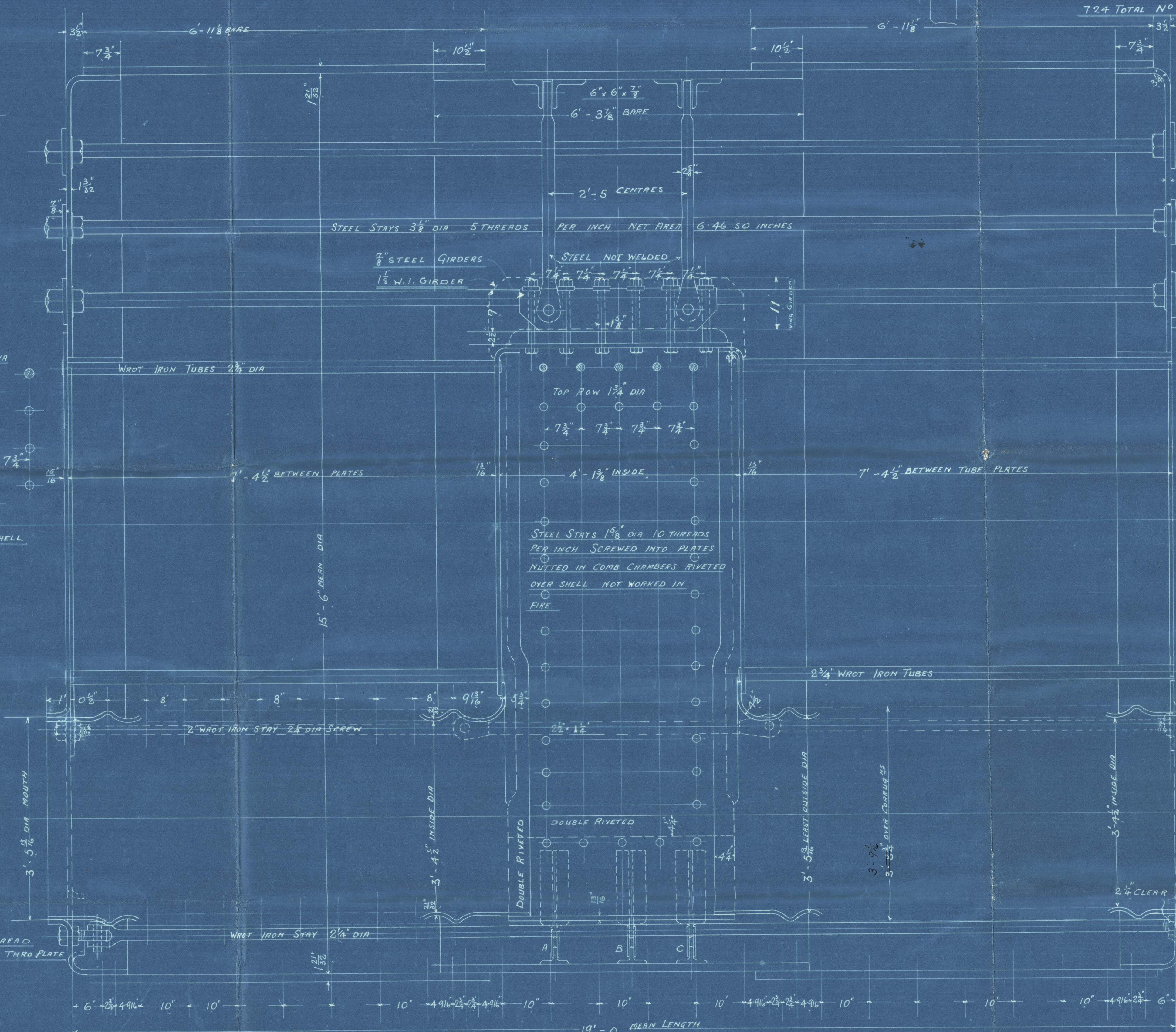
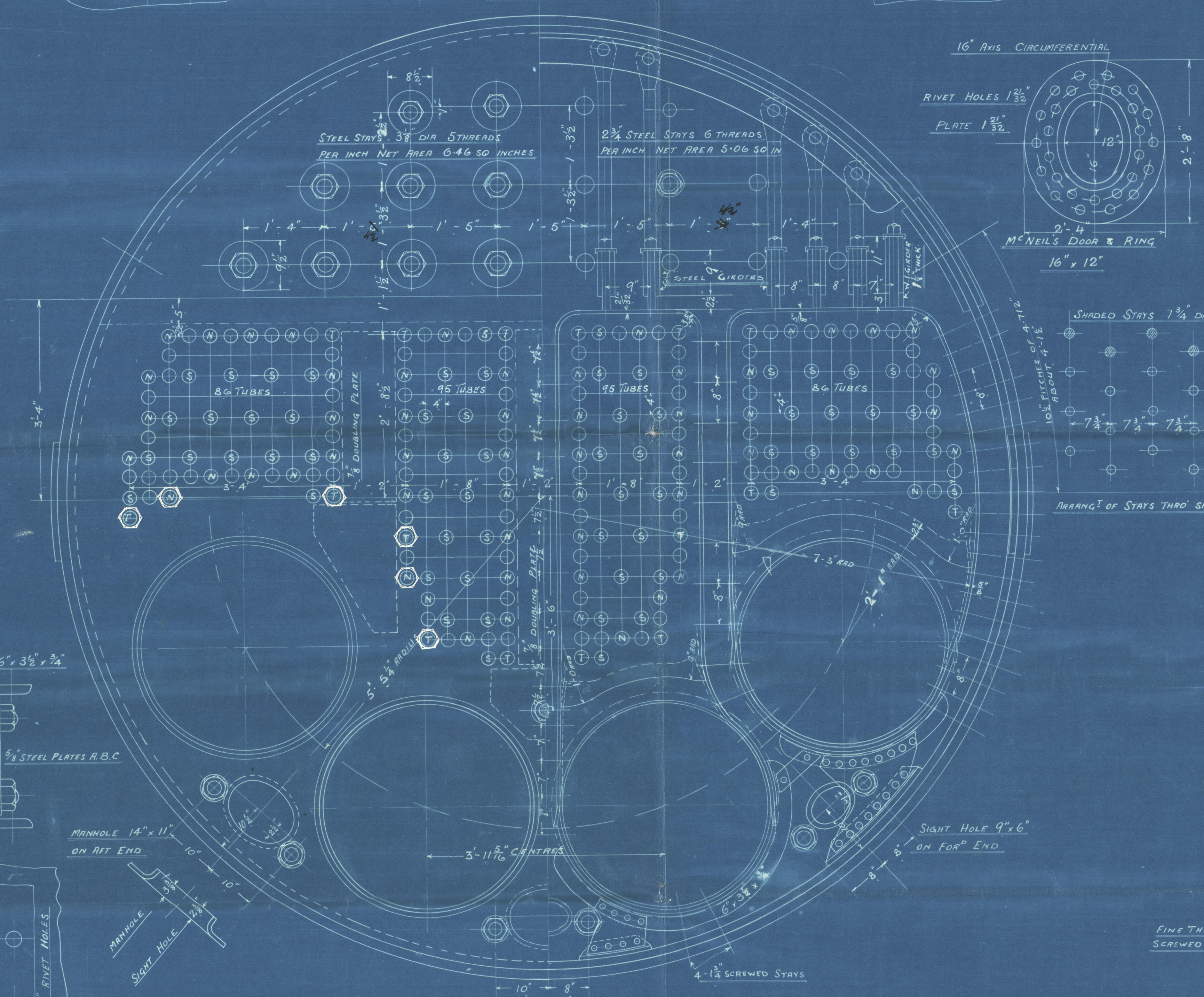
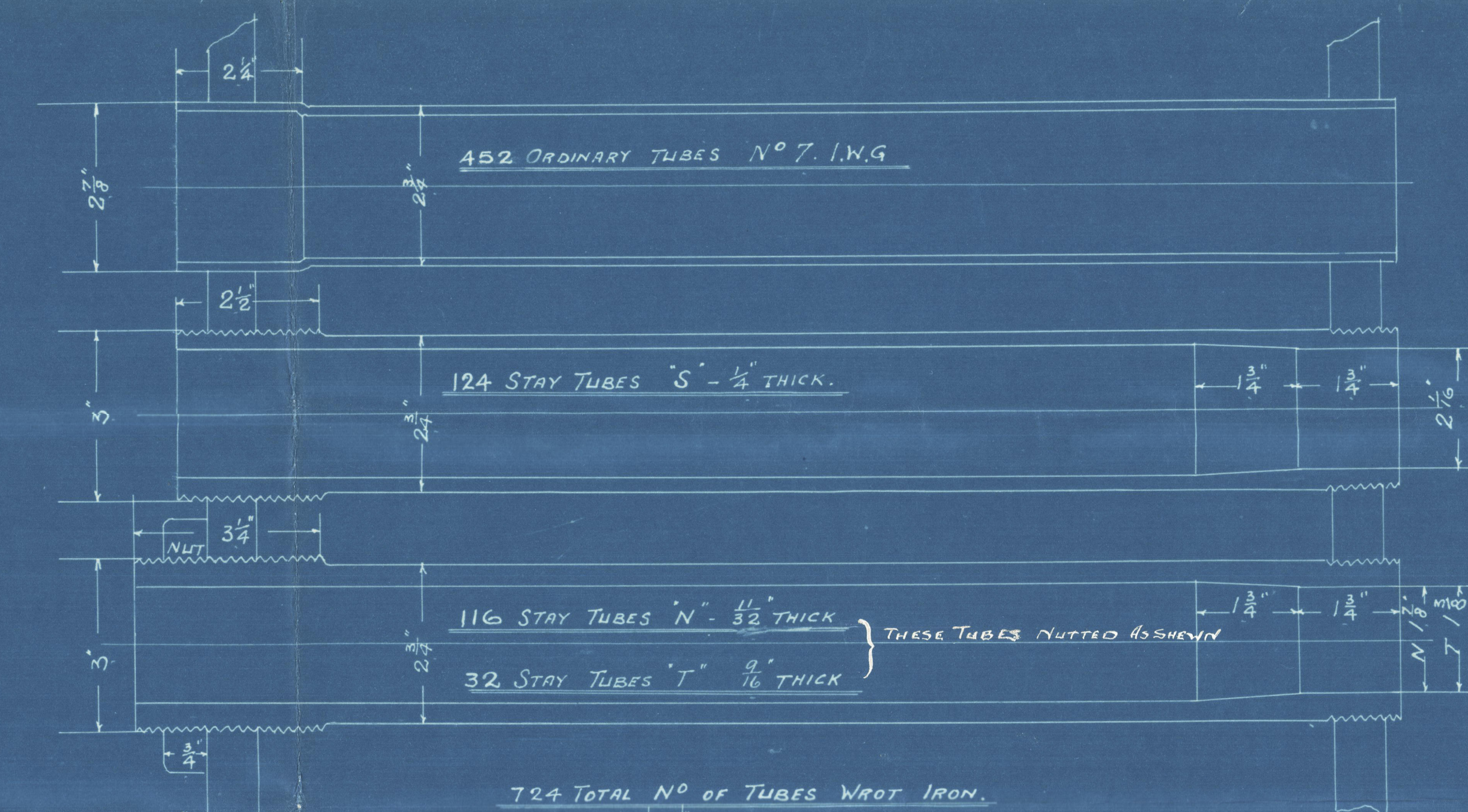


28/9/08



HEATING SURFACE	1 BOILER	2 BOILERS
TUBES	3850 #	
FURNACES	414 "	
COMB CHAMBERS	312 "	
FRONT TUBE PLATE	64	
TOTAL	4640 "	9280 #
GRATE AREA (5' 0" x 8' 0" BAR)	172 #	204 #



PARTICULARS OF RIVETING

LONGITUDINAL SEAMS, DOUBLE BUTT STRAPS RIVETED AS SHOWN
STRENGTH OF PLATE 83.437% STRENGTH OF RIVET 90.2%
CIRCUMFERENTIAL SEAMS TREBLE RIVETED AT CENTRE AS SHOWN
" " DOUBLE " " ENDS " "
ENDS
LAPPED, DOUBLE RIVETED, 1 1/8\"/>

WORKING PRESSURE 215 LBS PER SQ INCH

TEST 430 LBS " " "

2 OFF

D E MAIN BOILERS N° 403

UNDER SURVEYS OF BOARD OF TRADE & LLOYDS.

Scale 1" = 1'-0"

28/9/08

W98-0136



J. HALDEN & CO. LTD.  
No 3074

Photo Processes  
J. HALDEN & CO. LTD.





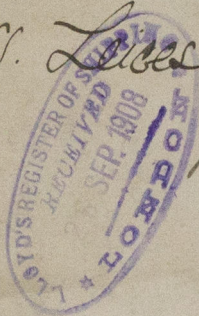
Belfast

Hawland & Woff L<sup>o</sup>

L. 85 403

W End Drillers

SS. Leicester <sup>Lupton</sup> }  
} <sup>James</sup>



Bel 885:



© 2020

Lloyd's Register  
Foundation

W98-0136