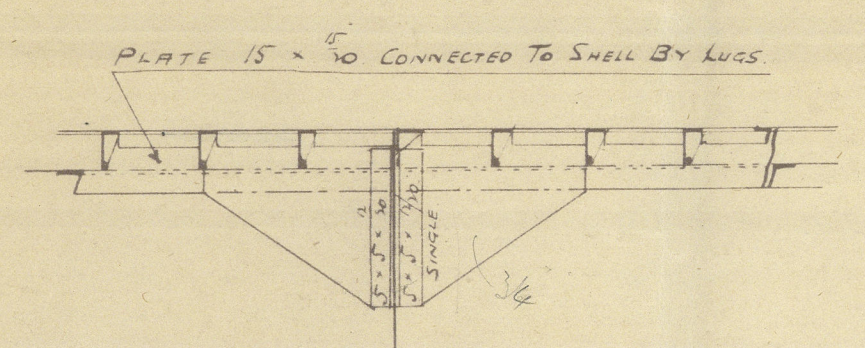


15.5.03
4.6.03
12.6.03
23.12.03

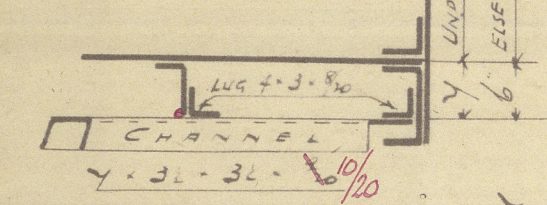
PROFILE N° 113

LENGTH 325' 0" x 44' 0" x 24' 6" MOULDED
SCALE 8" ONE FOOT

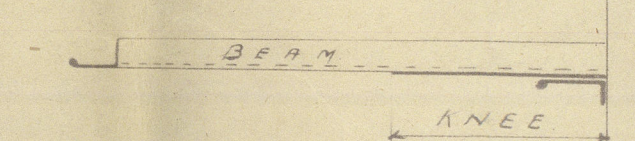
SKETCH SHOWING CONNECTION OF SIDE STRINGERS TO BULKHEADS



SKETCH SHOWING CHANNEL CONNECTION TO HATCH END BEAMS BULKHEADS

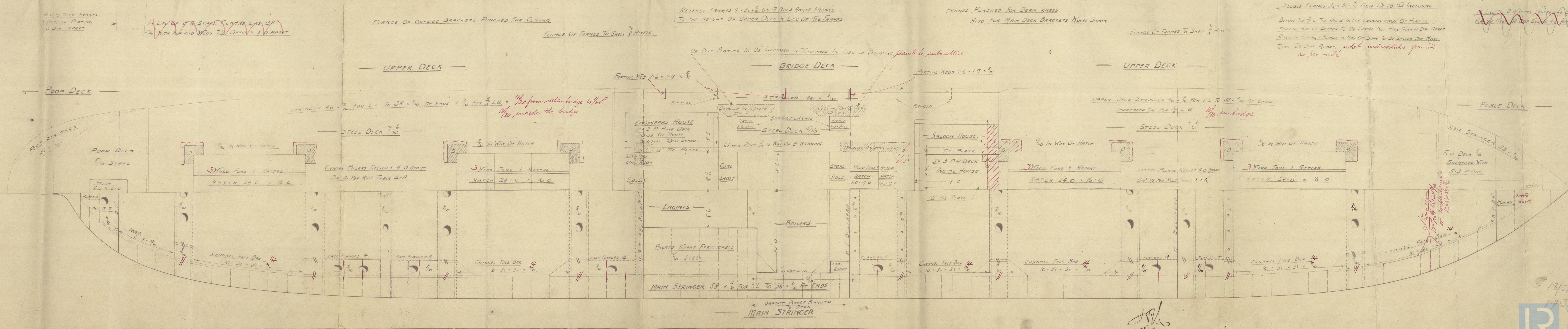
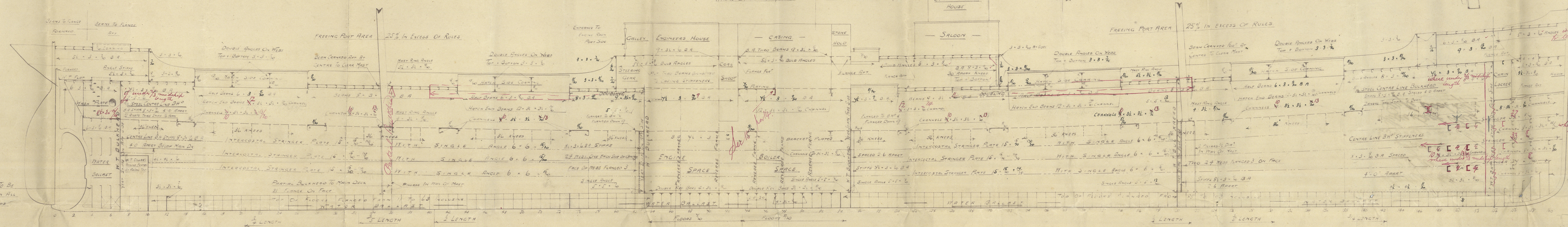


SKETCH SHOWING BEAMS AND BEAM KNEE IN WAY OF BUILD ANGLE FRAME



SECTION OF SIDE COMINGS OF CROSS BUNKER HATCH UPPER DECK

SECTION OF END COMING OF CROSS BUNKER HATCH ON UPPER DECK



Northumberland & S. Co.

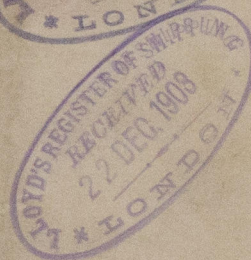
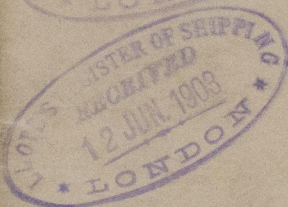
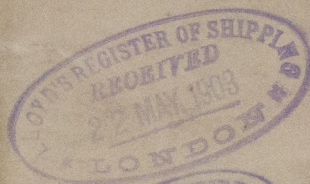
S.S. No 113.

Prop. 11.

325'0" x 47'0" x 24'6" W.M.

Three Deck Vessel
Single Deck Upper

W978-0014



S. S. F. L. L.

Newcastle Report

No 46992

RETAIN



© 2021

Lloyd's Register
Foundation