

22-3-05

N<sup>o</sup> 497

# MIDSHIP SECTION

DIMENSIONS 146'-8" x 23'-3" x (23'-1 1/2" M<sup>LD</sup>) 12'-0 1/2" M<sup>LD</sup>

DEPTH OF HOLD 11'-3"

SCALE 1/2" = ONE FOOT.

STEEL.

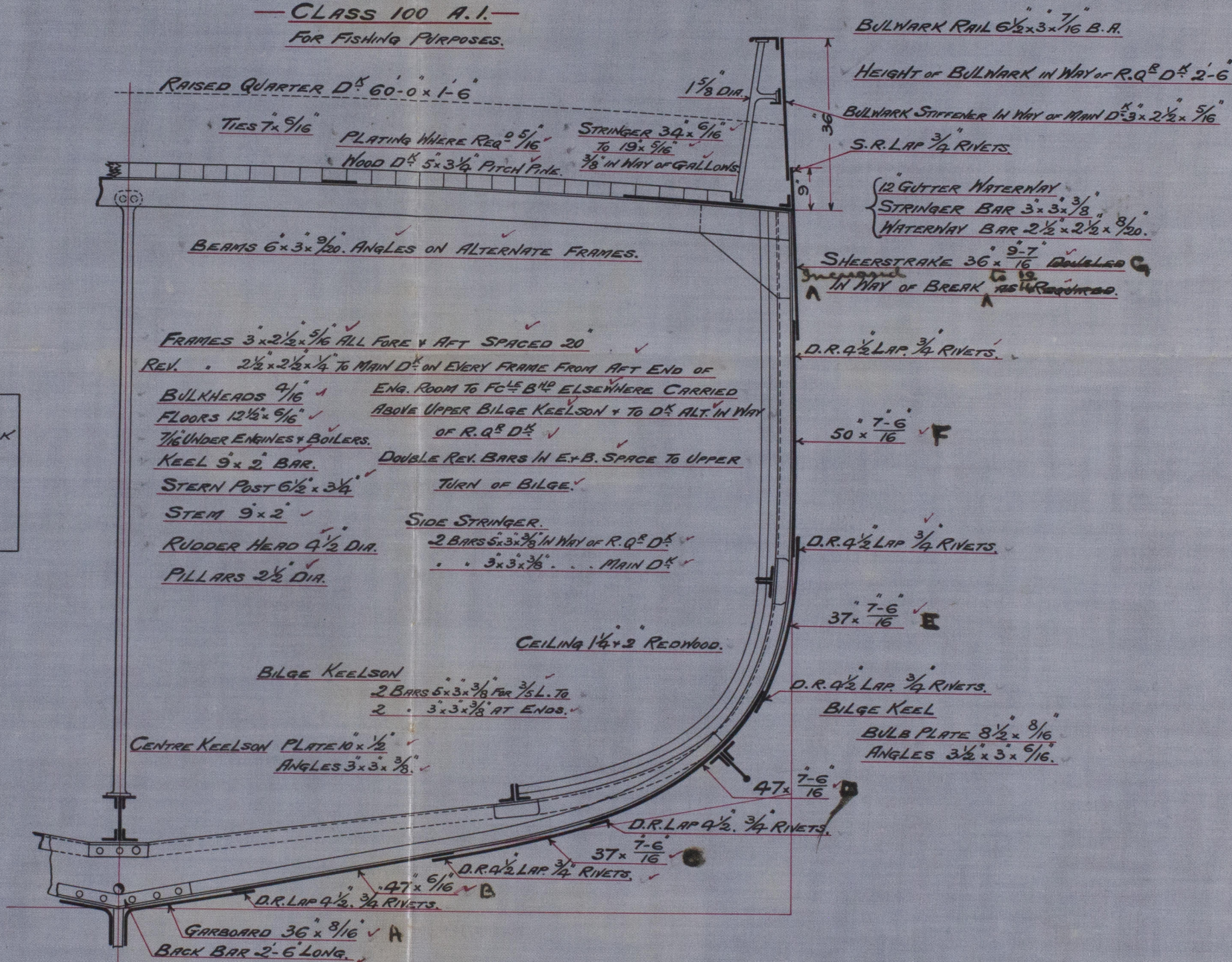
CLASS 100 A.1.

FOR FISHING PURPOSES.

| LLOYD'S NUMERALS.              |           |
|--------------------------------|-----------|
| 1/2 GIRTH                      | = 20.400  |
| 1/2 BREADTH                    | = 11.562  |
| DEPTH                          | = 12.520  |
| 1 <sup>ST</sup> N <sup>o</sup> | 44.482    |
| LENGTH                         | 145.350   |
| 2 <sup>ND</sup> N <sup>o</sup> | 6465.4587 |

$$\frac{L}{D} = 11.6$$

| EQUIPMENT                     |                     |
|-------------------------------|---------------------|
| ONE ANCHOR                    | 6 1/4 CMT EX. STOCK |
| "                             | 5 3/4 "             |
| "                             | 3 1/4 "             |
| 120 FTS 1 1/8 CHAIN STUD LINK |                     |
| 60 " 6 HANSE                  |                     |
| 60 " 5 HANSE                  |                     |



LLOYD'S REGISTER  
OF SHIPPING.  
21 MAR. 1905  
+ HULL +



© 2021

Lloyd's Register  
Foundation

W9711-0165



Charles S. & E. & C. Ltd.

No. 497.

Midship Section.  
of Asid

Hull Report No. 17243



NOTES

RETAIN

© 2021

Lloyd's Register  
Foundation

W971-0165