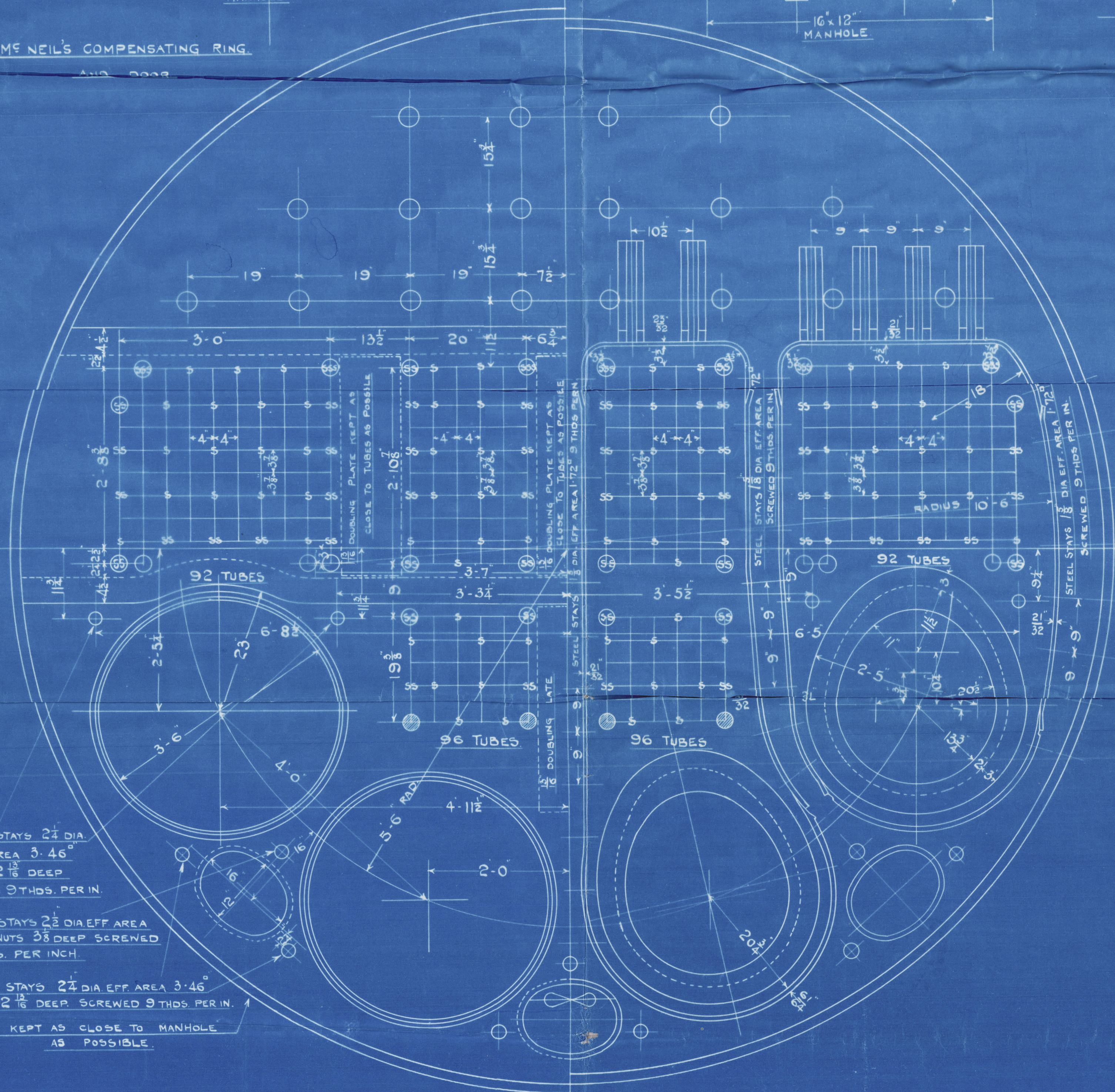
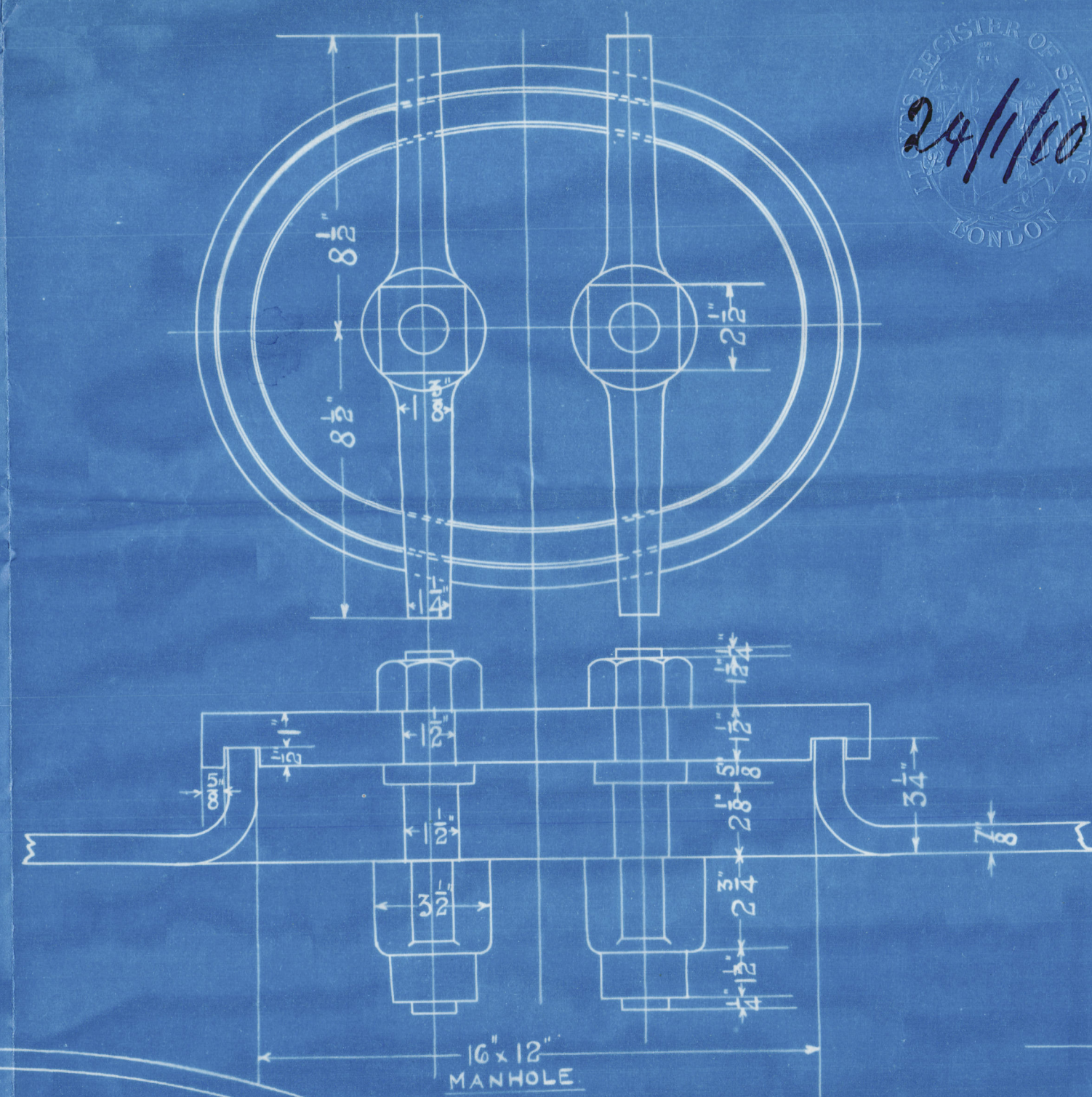


MC NEIL'S COMPENSATING RING.
AND BOILER



STEEL STAYS 2 1/4" DIA.
EFF. AREA 3.46"
NUTS 2 1/8" DEEP
SCREWED 9 THDS. PER IN.

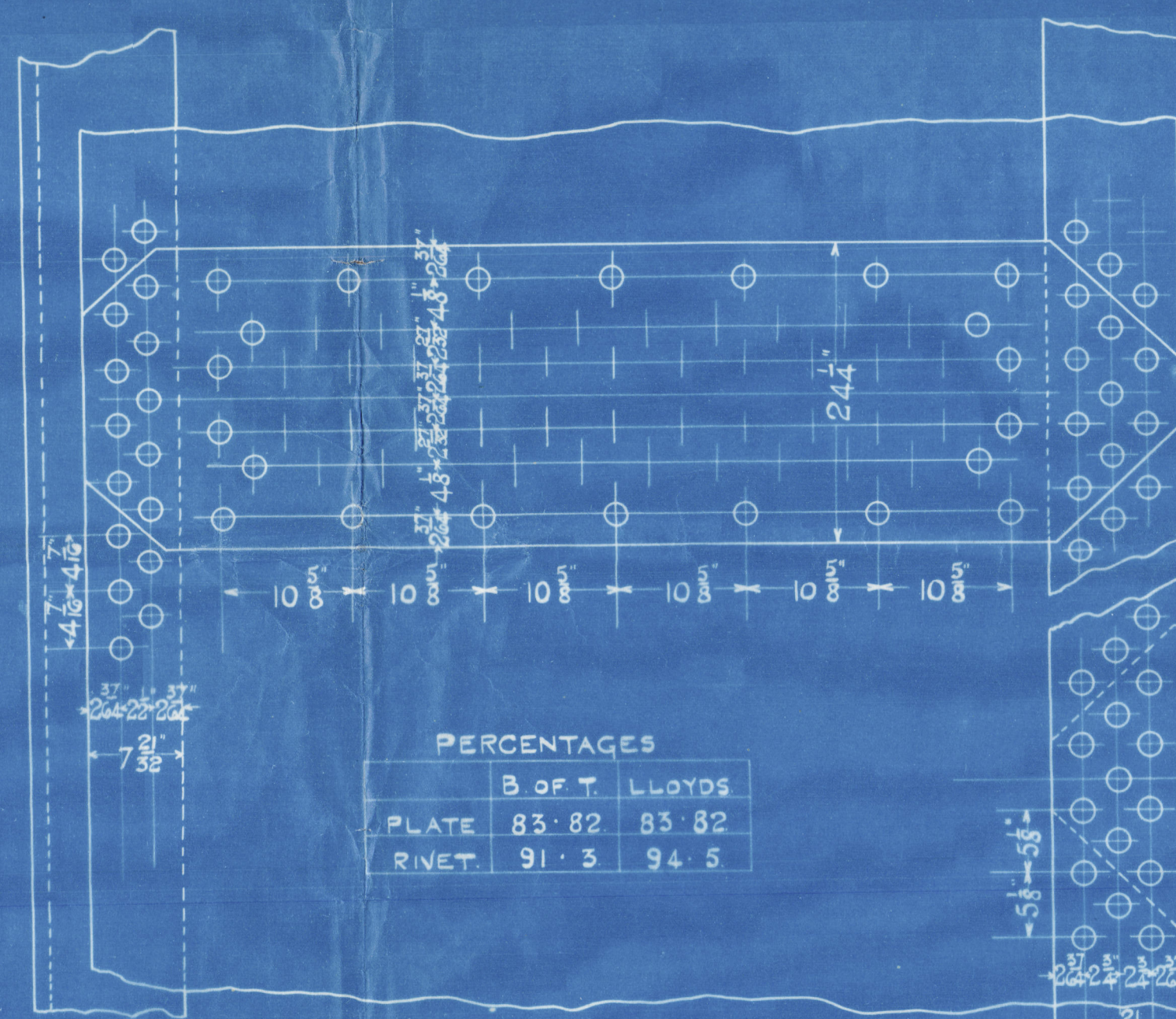
STEEL STAYS 2 3/8" DIA EFF. AREA
4.06" NUTS 2 3/8" DEEP SCREWED
9 THDS. PER INCH

STEEL STAYS 2 1/4" DIA EFF. AREA 3.46"
NUTS 2 1/8" DEEP SCREWED 9 THDS. PER IN.

STAYS KEPT AS CLOSE TO MANHOLE
AS POSSIBLE.

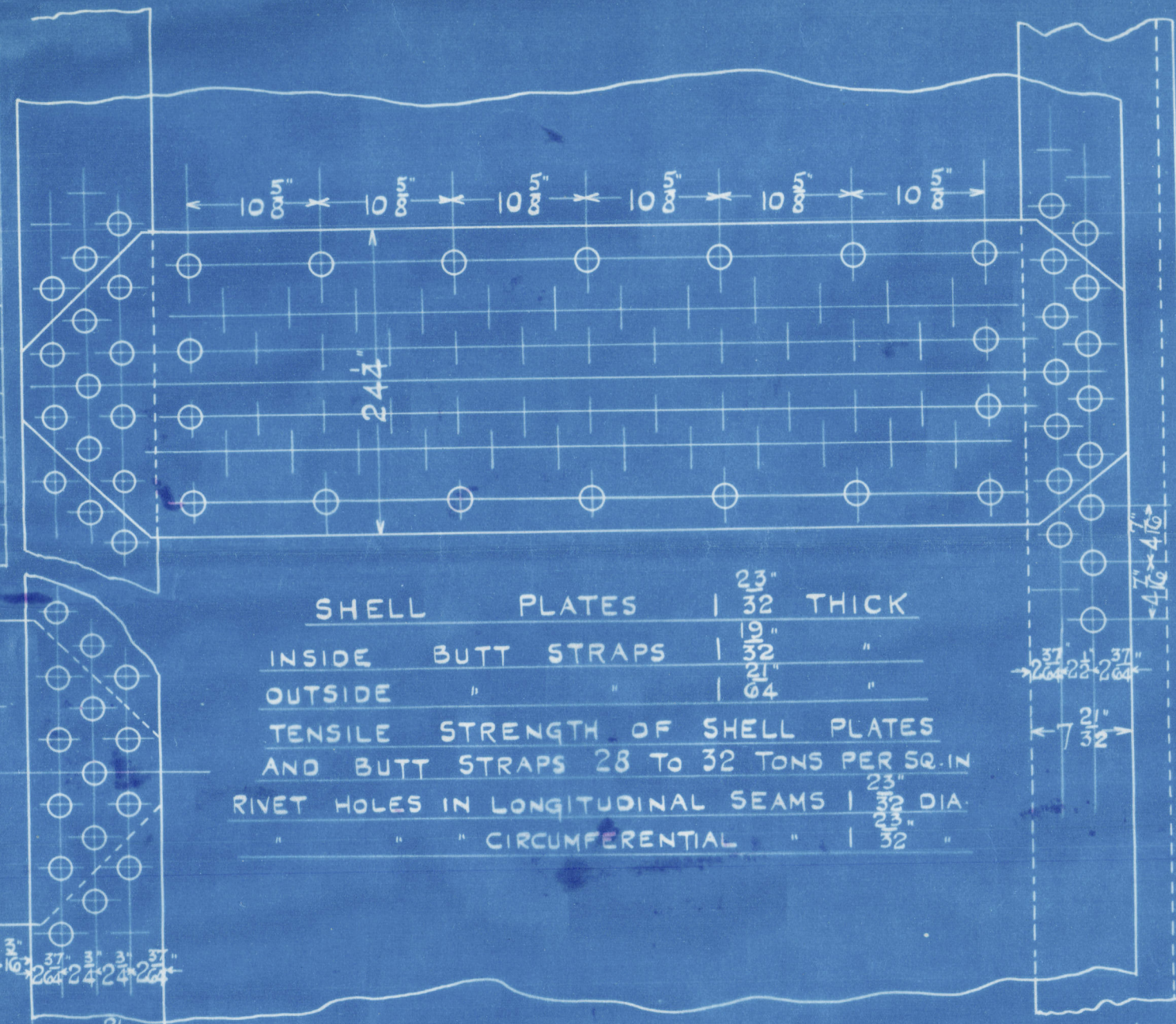
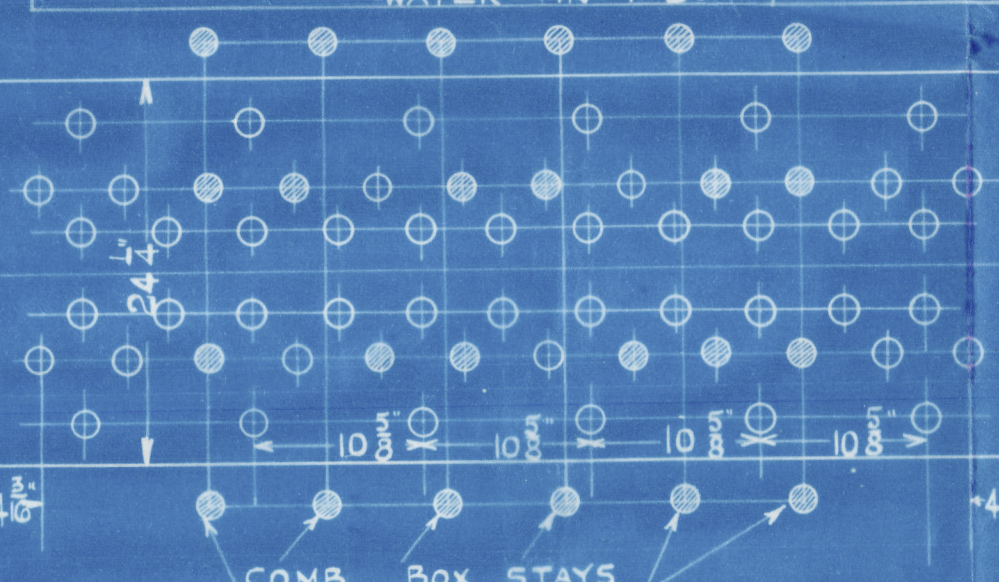
WORKING PRESSURE 215 LBS. PER SQ INCH
TO BE TESTED TO 430 "
TO BOARD OF TRADE & LLOYDS REQUIREMENTS.

24/1/10
LONDON

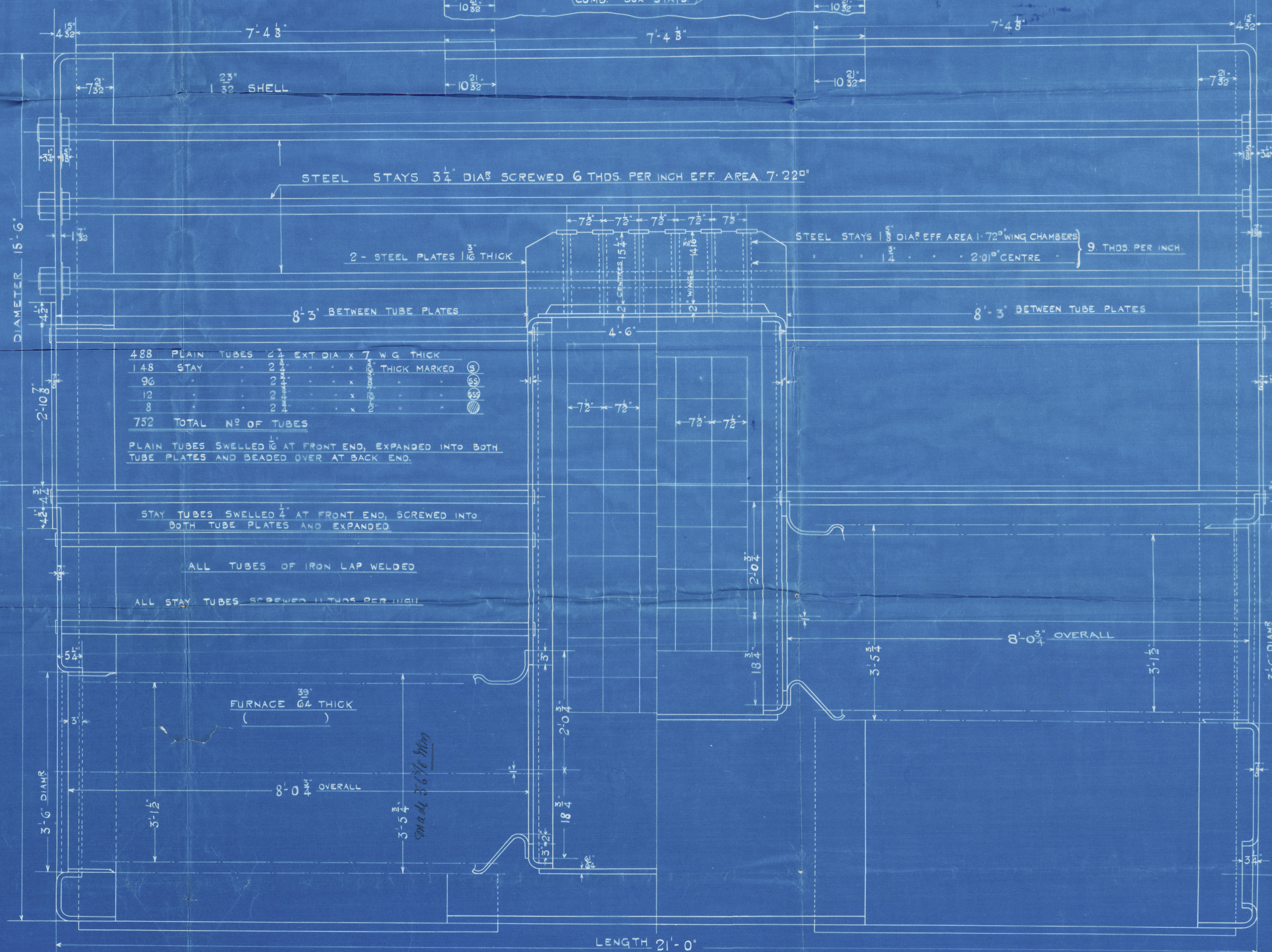


PERCENTAGES	B OF T.	LLOYDS
PLATE	83.82	85.82
RIVET	91.3	94.5

HEATING SURF	
752 TUBES 2 1/4" DIA.	4459
COMB CHAMBER SIDES	378
BACK TUBE PLATES	101
FURNACES	390
TOTAL	5328
GRATE SURFACE	133.2
LENGTH OF BAR	5'-4"
HEATING SURF IN 2 D.E. BR.	10656
GRATE	266.4
RATIO OF GRATE TO HEATING SURF	40"
WEIGHT OF ONE BOILER	
WATER IN 1 BR.	



SHELL PLATES 1 3/32" THICK
INSIDE BUTT STRAPS 1 3/32" THICK
OUTSIDE 1 3/32" THICK
TENSILE STRENGTH OF SHELL PLATES
AND BUTT STRAPS 28 TO 32 TONS PER SQ. IN.
RIVET HOLES IN LONGITUDINAL SEAMS 1 3/32" DIA
CIRCUMFERENTIAL 1 3/32"



488 PLAIN TUBES	2 1/4" EXT DIA x 7" W.G THICK
148 STAY	2 1/4" x 7" THICK MARKED
96	2 1/4" x 7" THICK MARKED
12	2 1/4" x 7" THICK MARKED
8	2 1/4" x 7" THICK MARKED
752 TOTAL	Nº OF TUBES

PLAIN TUBES SWELLED 1/4" AT FRONT END, EXPANDED INTO BOTH
TUBE PLATES AND BEADED OVER AT BACK END.

STAY TUBES SWELLED 1/4" AT FRONT END, SCREWED INTO
BOTH TUBE PLATES AND EXPANDED.

ALL TUBES OF IRON LAP WELDED.

ALL STAY TUBES SCREWED 11 THDS PER INCH.

FURNACE 39" THICK
64 THICK

8'-0" OVERALL

3'-5 1/2" MADE 3'-6 1/2" HIGH

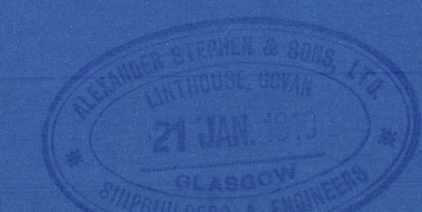
LENGTH 21'-0"

2-OFF

28/1/10
24/1/10

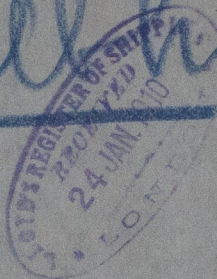
T.S.S. N° 439.
MAIN BOILER.

SCALE 1" = 1' FOOT

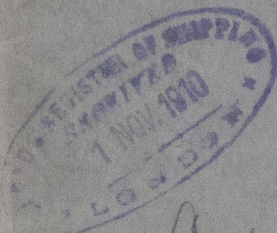


Alice Stephen Son Eng. 8°439
2 Double ended main Boilers
Gr. P = 2 1/2 lbs. mem 22/1/10

S/S "Alhona"



GLASGOW REPORT No. 29453.



Last date Survey
Nov = 2nd



Lloyd's Register
Foundation

W971-0024