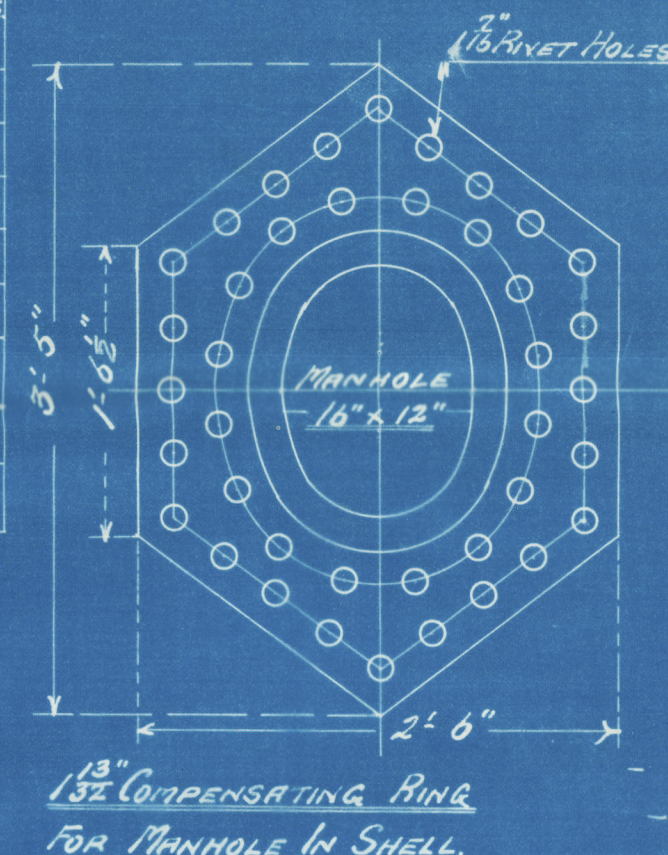
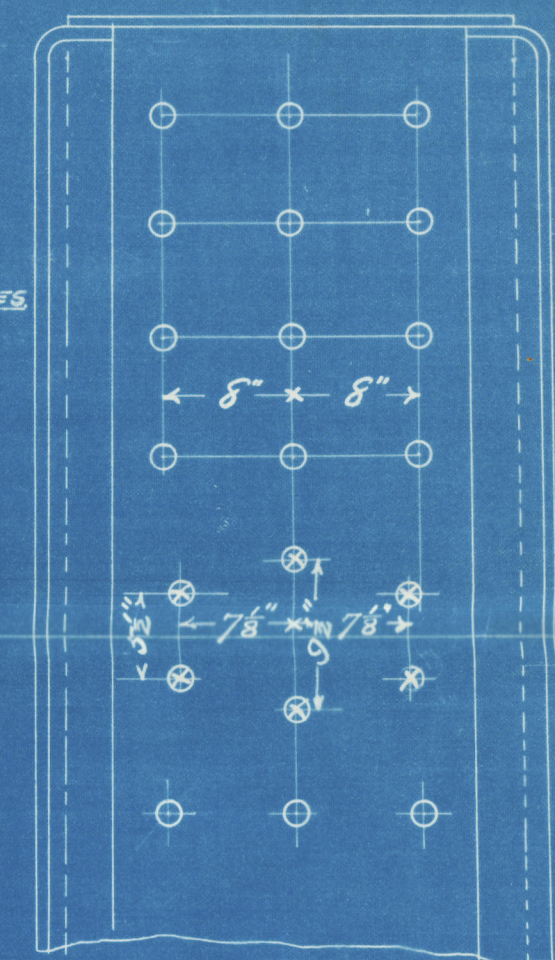


- DETAIL OF DOORS -  
- FOR 16"x12" MANHOLES -

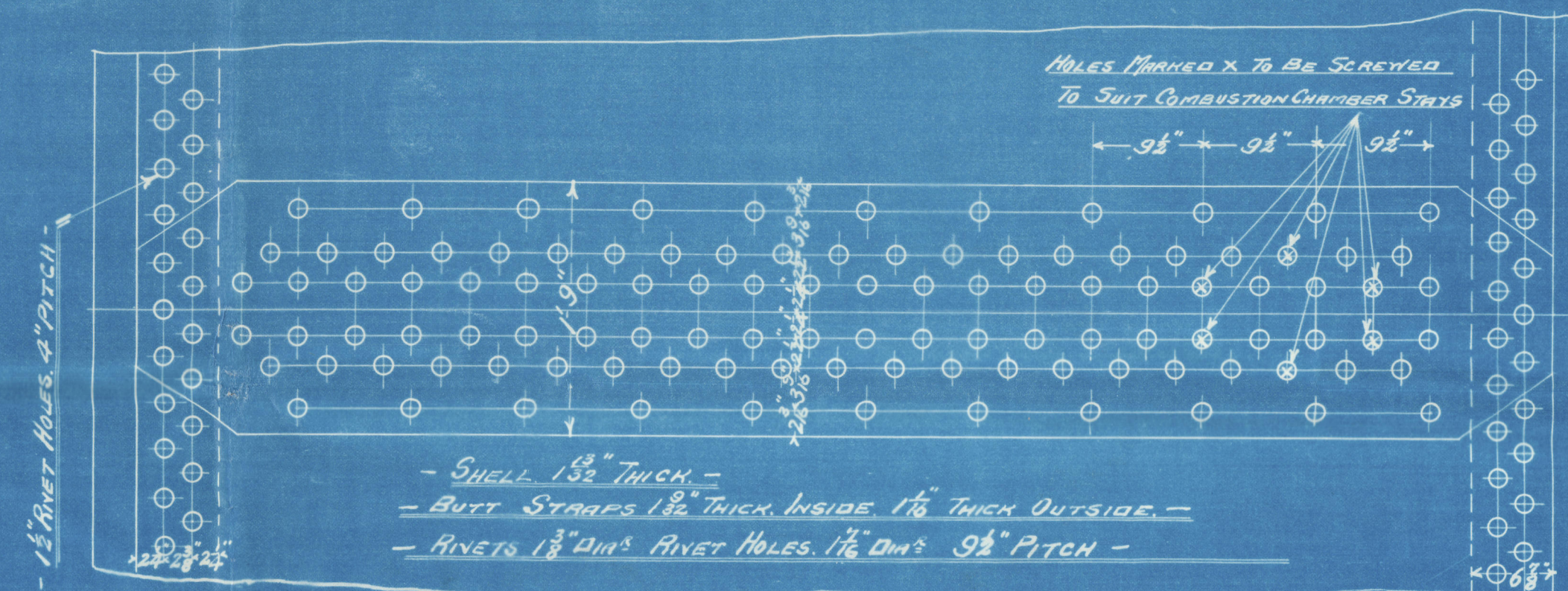
- PARTICULARS -		1 BOILER	4 BOILERS
HEATING SURFACE: TUBES		2199 sq. ft.	8796 sq. ft.
" " FURNACES		128.6 sq. ft.	514.4 sq. ft.
" " COMB. CHAMBERS		22.7 sq. ft.	90.8 sq. ft.
" " BACK TUBE PLATES		50.0 sq. ft.	200.0 sq. ft.
" " TOTAL		2405.0 sq. ft.	9790.8 sq. ft.
GRATE AREA (3'6" BARS)		60.5 sq. ft.	242.0 sq. ft.
PATIO HEATING SURFACE		43	
GRATE AREA			
AREA THROUGH TUBES		15.4 sq. ft.	61.6 sq. ft.
PATIO AREA THROUGH TUBES		3.92	



13" COMPENSATING RING  
FOR MANHOLE IN SHELL



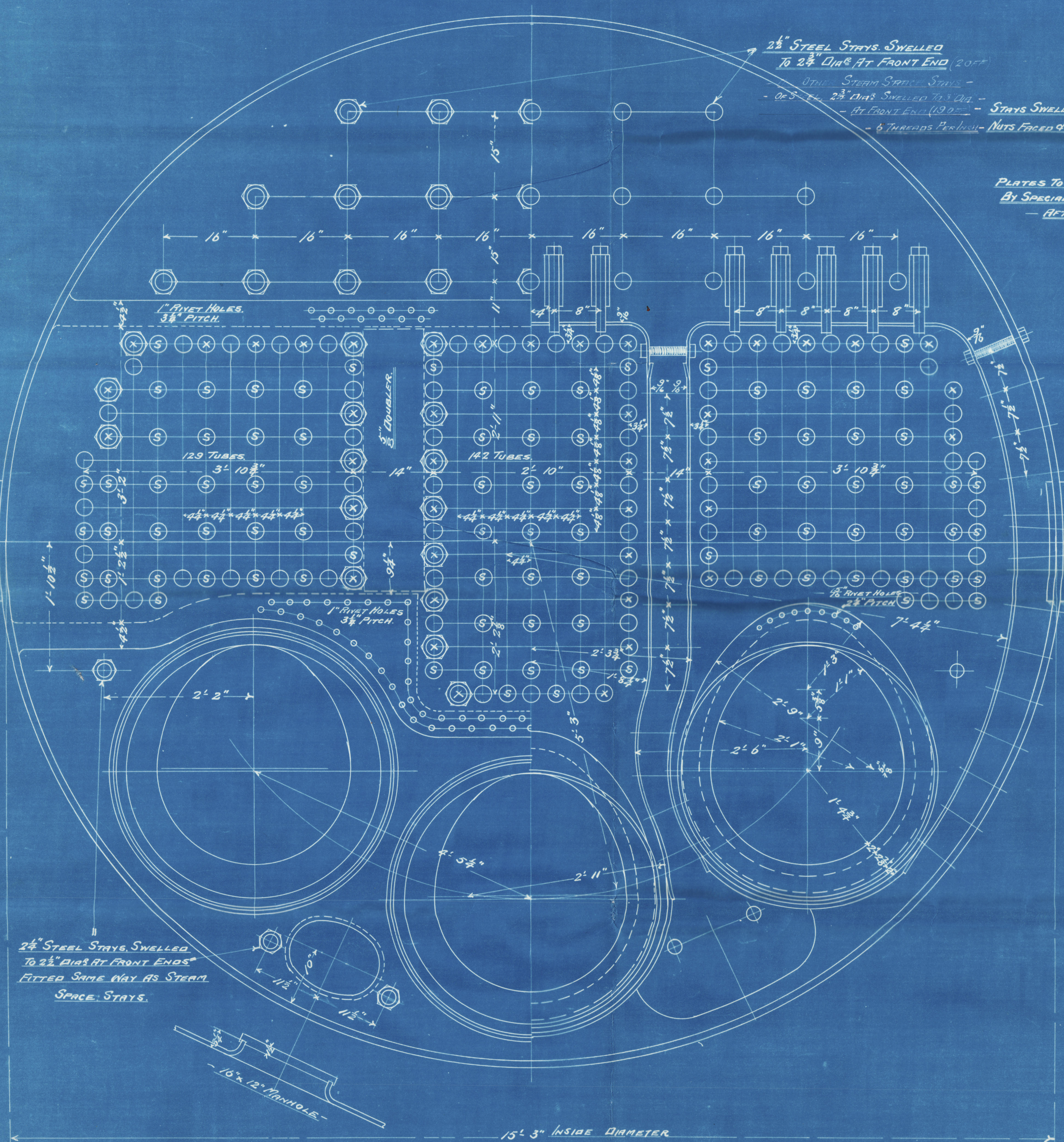
THE SIX STAYS WHICH PASS THROUGH -  
- BUTT STRAPS TO BE STAGGERED AS SHOWN -  
- MARKED THUS X -



- SHELL 1 1/2" THICK -  
- BUTT STRAPS 1 1/2" THICK INSIDE 1 1/2" THICK OUTSIDE -  
- RIVETS 1 1/8" DIA. RIVET HOLES 1 1/2" DIA. 9 1/2" PITCH -

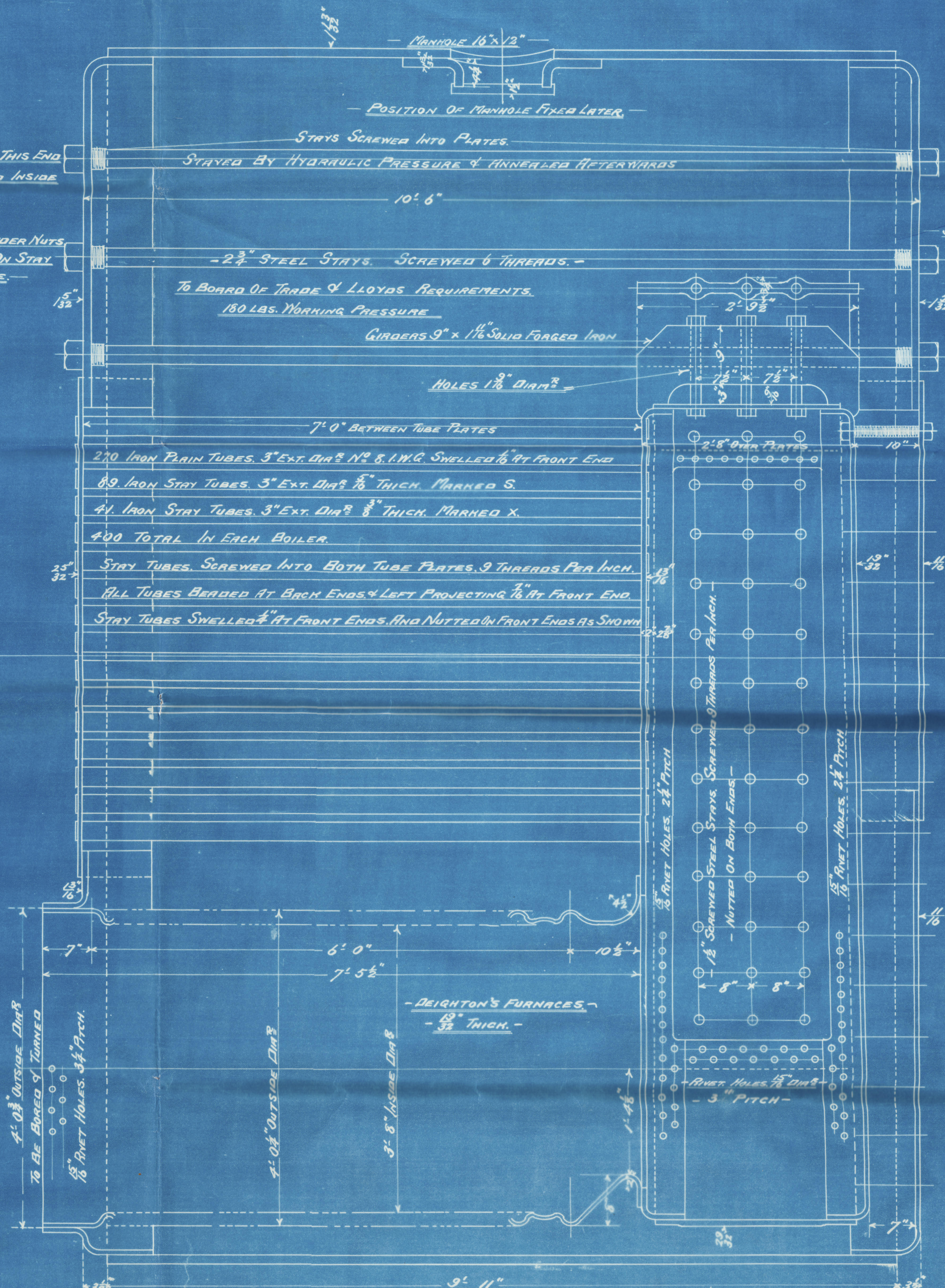
- ALL PLATES FOR BOILERS, TO BE OF STEEL -		
TENSILE STRENGTH OF SHELL PLATES 28 TO 32 TONS		
DO	DO	BUTT STRAPS " "
DO	DO	OTHER PLATES 26 " 30 "
DO	DO	FURNACES 26 " 30 "
TUBES TO BE SELECTED A.B. IRON		

- TUBES ARE NOT TO BE OILED OR COATED - ENDS OF TUBES TO BE BUFFED -



2 1/2" STEEL STAYS, SWELLED  
TO 2 1/2" DIA. AT FRONT ENDS  
FITTED SAME WAY AS STEEL  
SPACE STAYS

13' 3" INSIDE DIAMETER



- 2 1/2" STEEL STAYS, SCREWED 6 THREADS -  
TO BOARD OF TRADE & LLOYD'S REQUIREMENTS.  
180 LBS. WORKING PRESSURE  
GIRDS 9" x 1 1/2" SOLID FORGED IRON  
HOLES 1 1/2" DIA.

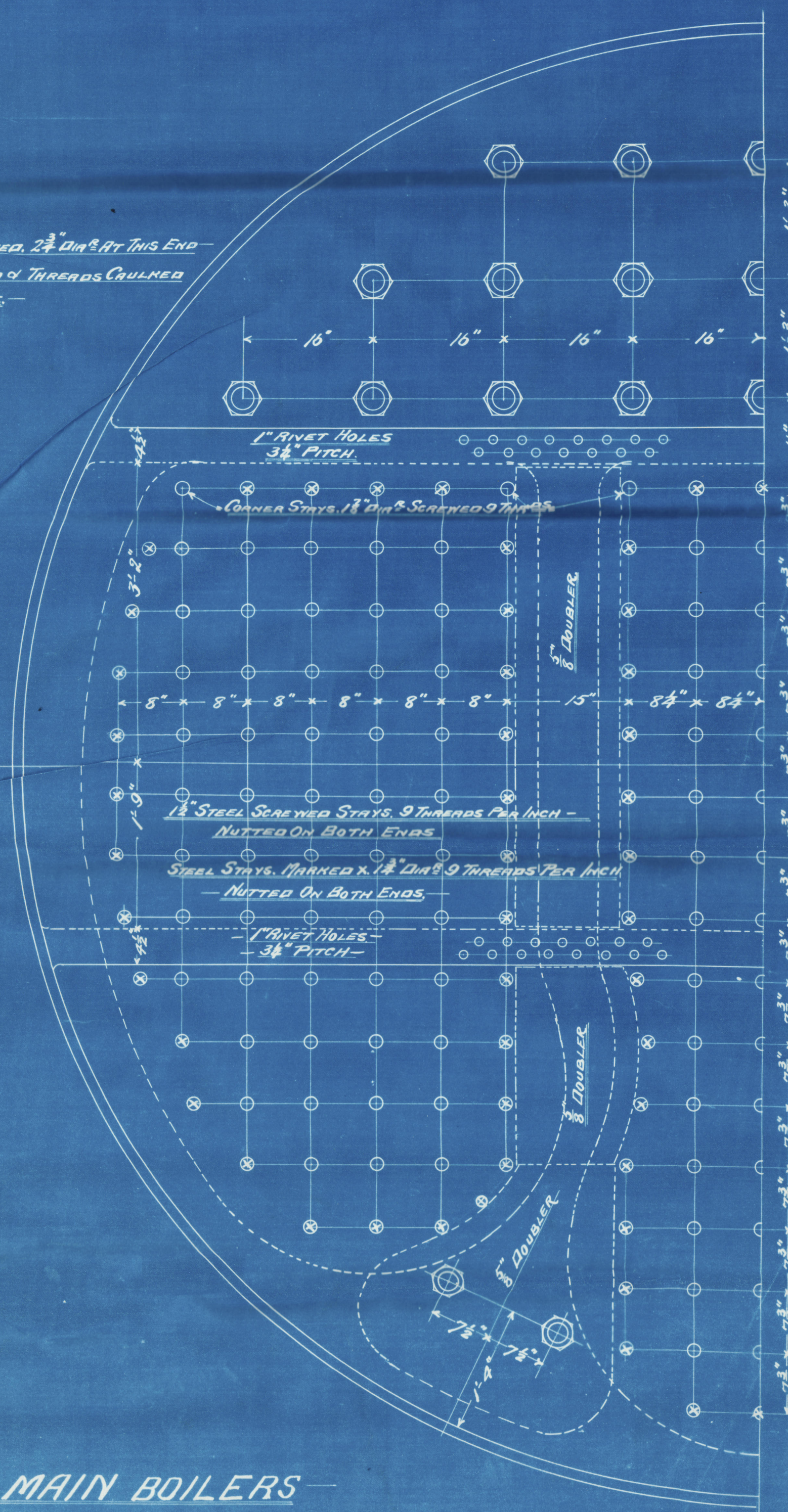
210 IRON PLAIN TUBES, 3" EXT. DIA. NO. 8, I.W.C. SWELLED 1/4" AT FRONT END  
89 IRON STAY TUBES, 3" EXT. DIA. 1 1/2" THICK, MARKED S.  
41 IRON STAY TUBES, 3" EXT. DIA. 1 1/2" THICK, MARKED X.  
400 TOTAL IN EACH BOILER

STAY TUBES, SCREWED INTO BOTH TUBE PLATES, 9 THREADS PER INCH.  
ALL TUBES BEADED AT BACK ENDS & LEFT PROJECTING 1/4" AT FRONT END.  
STAY TUBES SWELLED 1/4" AT FRONT ENDS AND NUTTED ON FRONT ENDS AS SHOWN.

- DEIGHTON'S FURNACES -  
1 1/2" THICK -

9' 11"

- 4 OFF. FOR EACH SHIP -



MAIN BOILERS

ENGINES, NO. 442-44

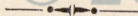
SCALE 1" = 1 FOOT





From BARCLAY, CURLE & CO., Ltd.

STOBCROSS ENGINE WORKS.



*Enclosure*

**Messrs.  
Lloyd's Surveyors.**

Barclay Clerk. 1<sup>st</sup>  
Main Blue. 7: 442

S.S. "Comrie Castle"

S.S. "Comrie Castle"

Gls. apt No. 21309



W97-0038



© 2019

Lloyd's Register  
Foundation