

14.4.05

MIDSHIP SECTION

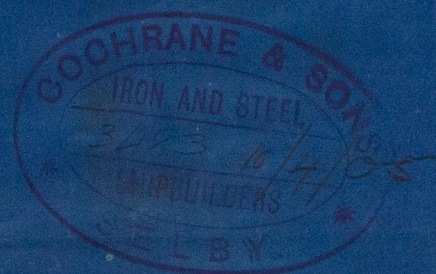
STEEL SCREW TRAWLER

N^{os} 347-8

DIM: 117'-0" x 21'-6" x 12'-6" MOULDED 11'-9" HOLD.

TO CLASS 100.A.I. AT LLOYD'S FOR FISHING PURPOSES.

RAISED Q^R D^K 62' x 15" RAISED FORECASTLE DECK. 19' x 15".



ENGINE & BOILER CASING AS PREVIOUSLY APPROVED.
DECK PLATED IN WAY OF E & B CASING

NUMERALS AS PER RULES	
1 st GIRTH	19.16
2 nd BREADTH	10.70
DEPTH	12.51
	42.38 1 st N°
LENGTH AS PER RULE 115.75	
	49.02 17 2 nd N°

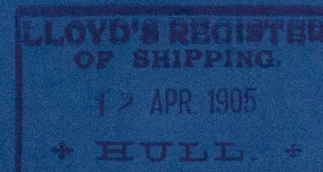
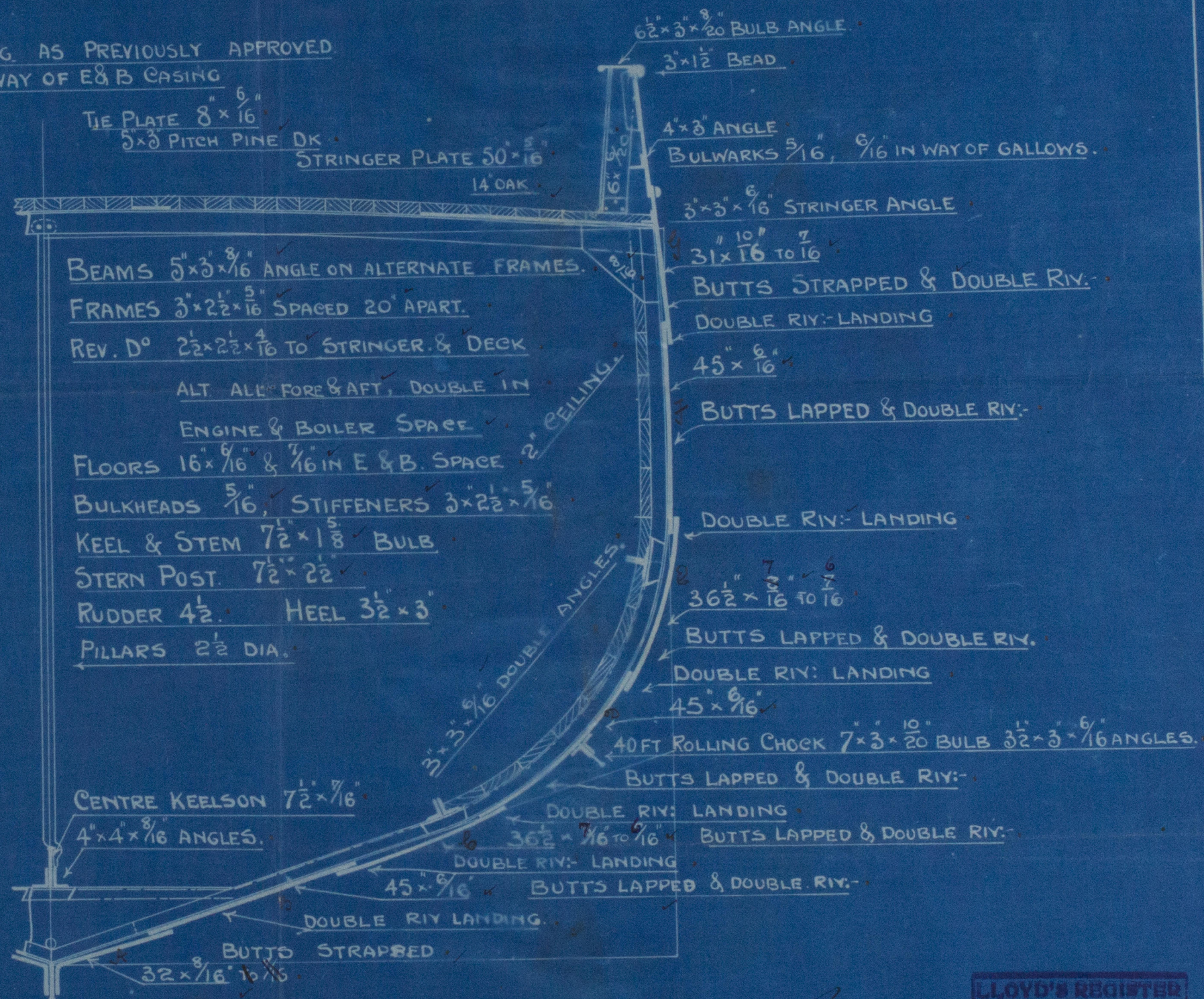
PROPORTIONS

DEPTH TO L	5.64
BREADTH " "	3.2.8.9

EQUIPMENT

1 st BOWER	5 CWTs	EX STOCK
2 nd " "	4 1/2 "	" "
3 rd " "	2 1/2 "	" "
90 FATH ^s	1" CABLE	
60	5/8" HAWSER	
60	4" WARP	

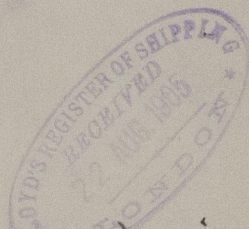
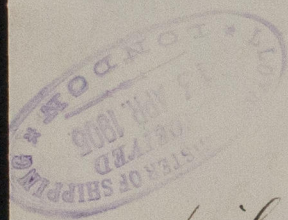
COCHRANE & SONS
SHIPBUILDERS
SELBY



Cochrane & Sons

N^o 347 + 348

Midship Section.



s/s 'Cyrano'
Hull Report No-

W966-0084

RETAIN

RETAIN



© 2020

Lloyd's Register
Foundation