

8.10.01

CHECKED BY *PL*  
DATE *Oct 2nd 1901*  
TIME CHARGED TO  
NO 1

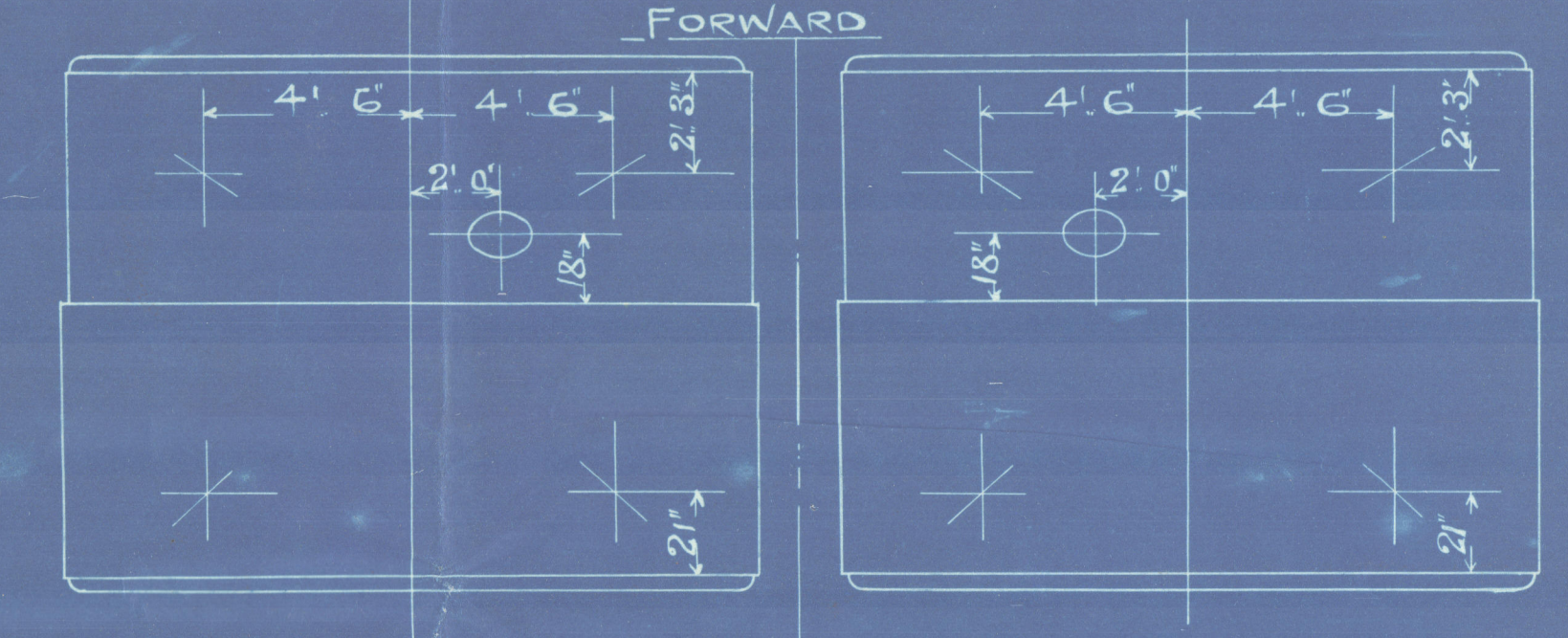
# BOILER, CONTRACT N° 558.

MESS<sup>rs</sup> SIR W.G. ARMSTRONG, WHITWORTH & CO<sup>ys</sup> S.S. N° 726.

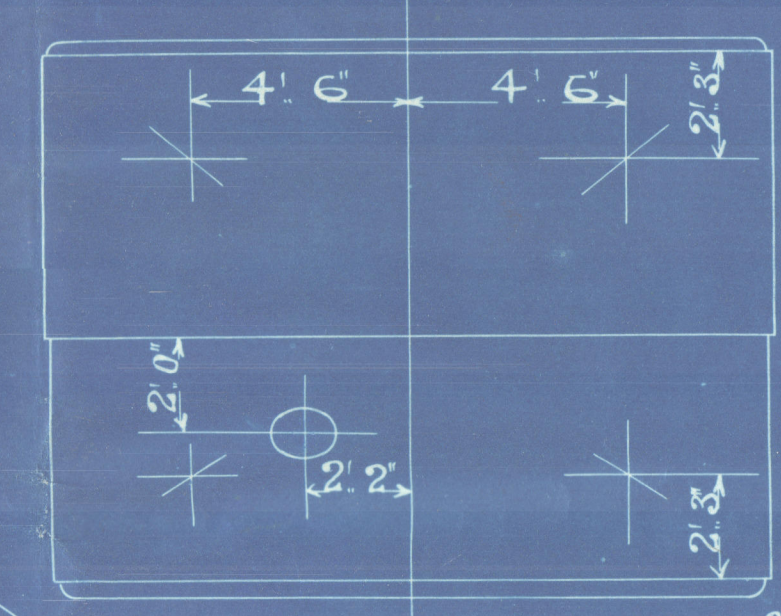
TO BE CONSTRUCTED TO PASS LLOYDS REQUIREMENTS

3, OFF THIS

SCALE 1'-ONE FOOT.



STOKEHOLE



PLATES MANUFACTURED BY  
THE WEARDALE IRON & COAL CO<sup>Y</sup>

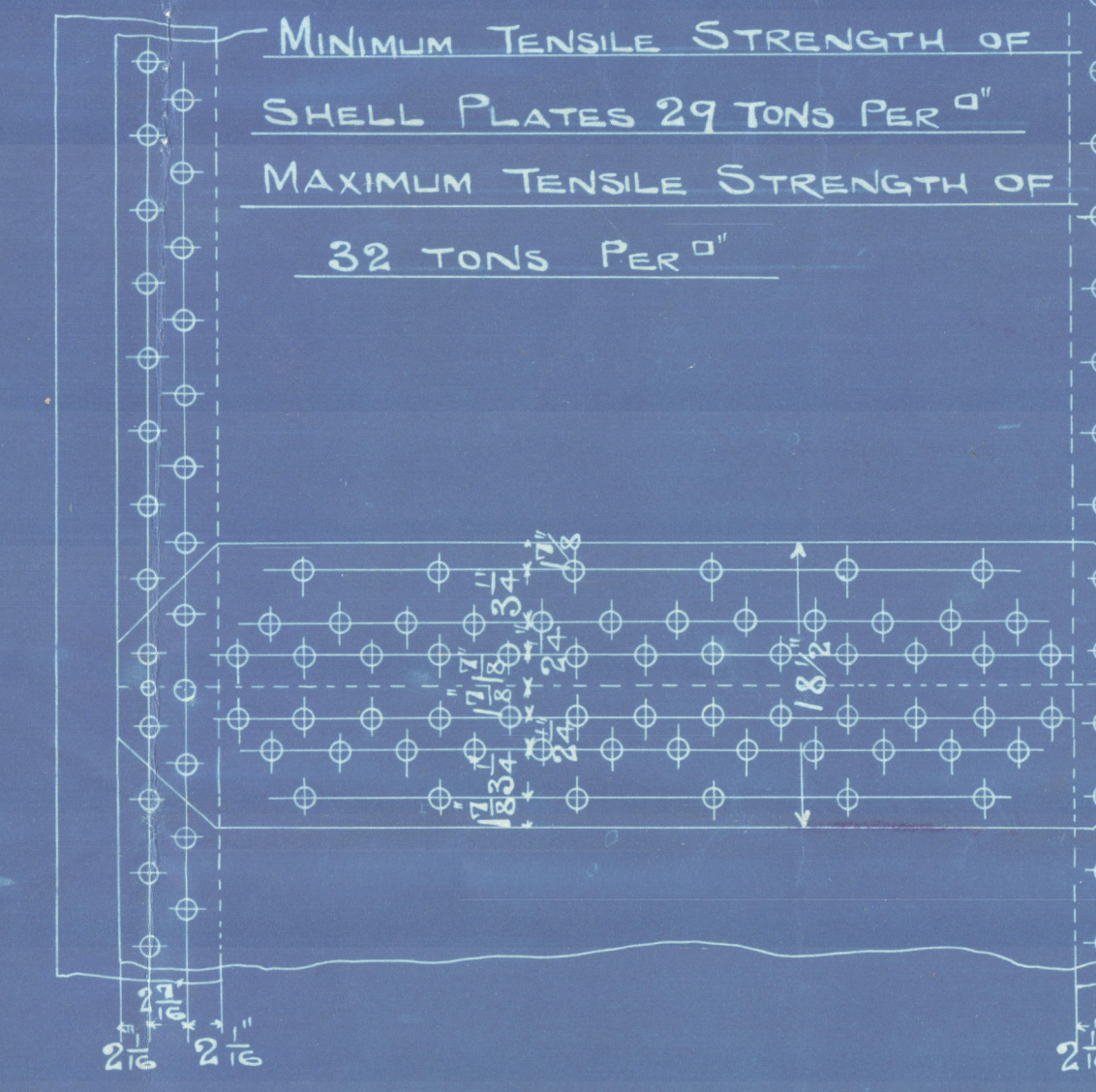
PLATES STEEL  
RIVETS "  
MAIN STAYS "  
C.C. STAYS IRON  
TUBES "

SPARE GEAR  
20 BOILER TUBES

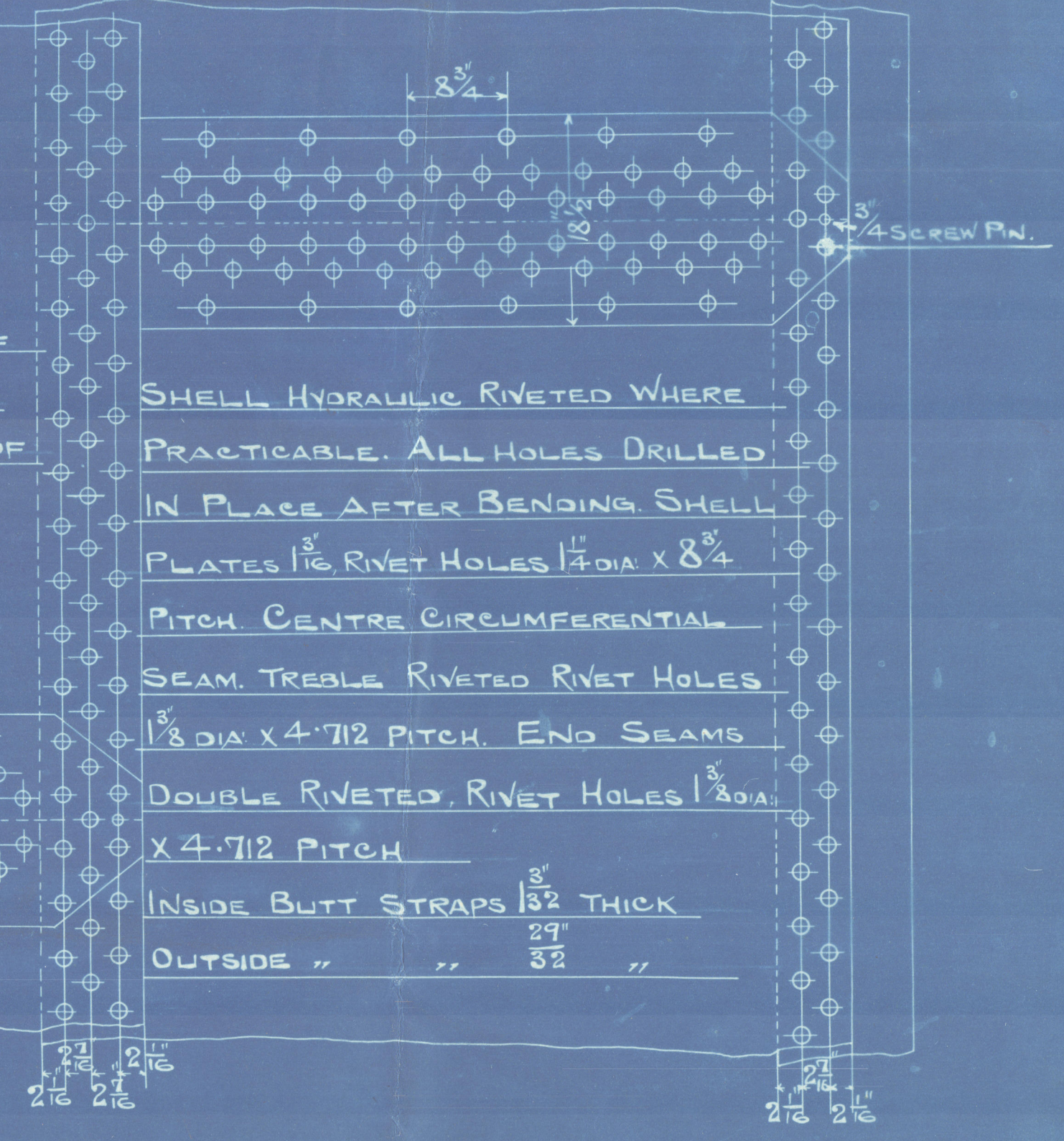
PLAN OF SHELL RIVETING.

STRENGTH OF JOINT  
PLATE 85.7 %  
RIVET 87.9 %

MINIMUM TENSILE STRENGTH OF  
SHELL PLATES 29 TONS PER "²"  
MAXIMUM TENSILE STRENGTH OF  
32 TONS PER "²"



SHELL HYDRAULIC RIVETED WHERE  
PRACTICABLE. ALL HOLES DRILLED  
IN PLACE AFTER BENDING SHELL  
PLATES 1 1/8" RIVET HOLES 1 1/4" DIA X 8 3/4"  
PITCH CENTRE CIRCUMFERENTIAL  
SEAM. TREBLE RIVETED RIVET HOLES  
1 3/8" DIA X 4 7/12" PITCH. END SEAMS  
DOUBLE RIVETED. RIVET HOLES 1 3/8" DIA  
X 4 7/12" PITCH  
INSIDE BUTT STRAPS 1 3/8" THICK  
OUTSIDE " " 3/8" "



## HEATING SURFACE

TUBES. 1850.

FURNACES 164

COMBUSTION CHAMBERS 250

TUBE PLATES 80

TOTAL ONE BOILER 2344

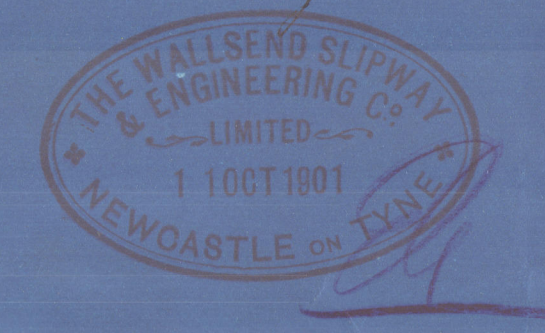
" THREE " 7032.

WORKING PRESSURE 180 LBS PER "²"

TEST " 360 " " "



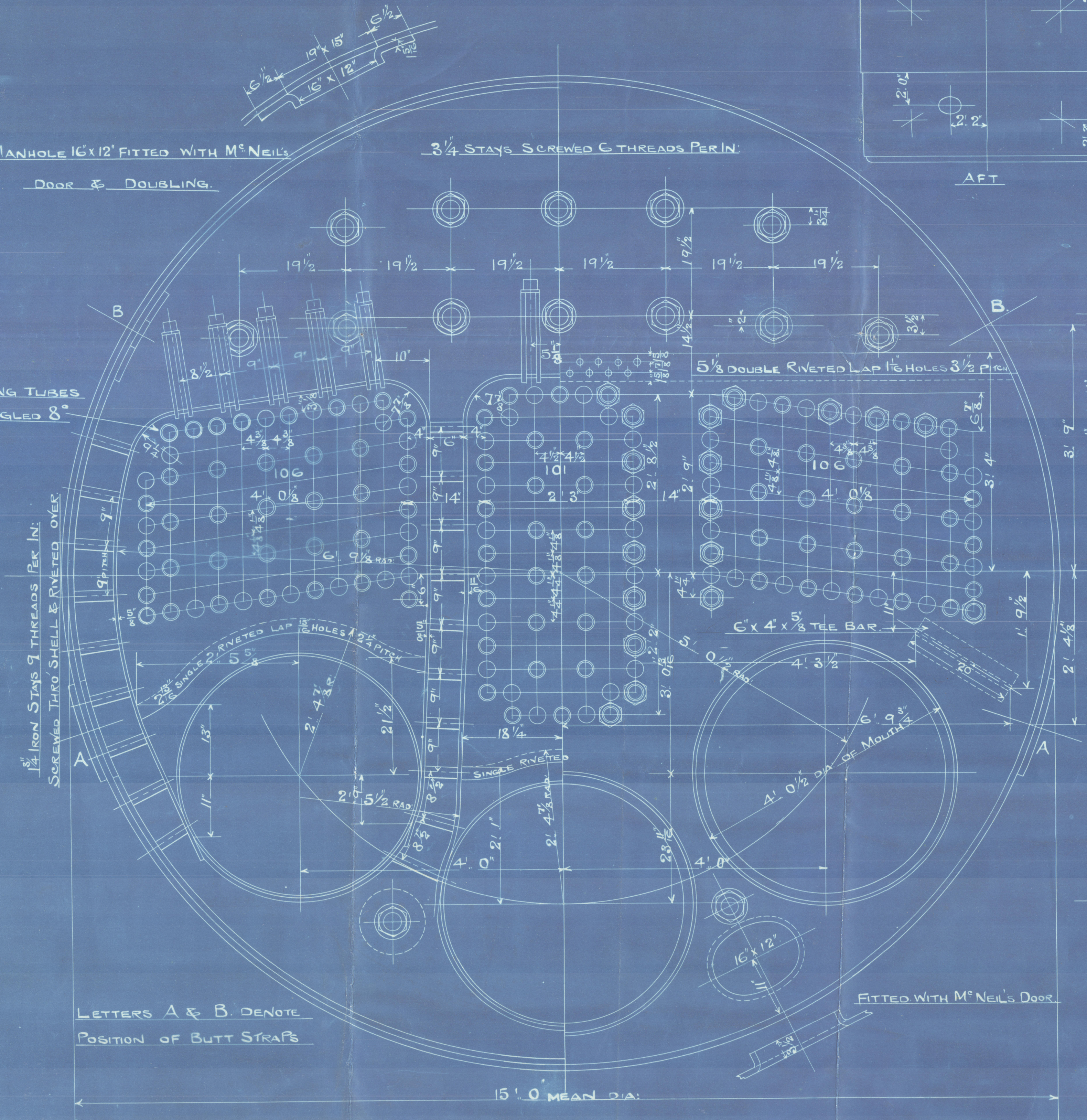
altered to black



MANHOLE 16x12' FITTED WITH M<sup>c</sup>NEIL'S

DOOR & DOUBLING.

3/4 STAYS SCREWED 8 THREADS PER INCH



WING TUBES  
ANGLED 8°

1/4" IRON STAYS 9 THREADS PER INCH  
SCREWED THRO SHELL & RIVETED OVER

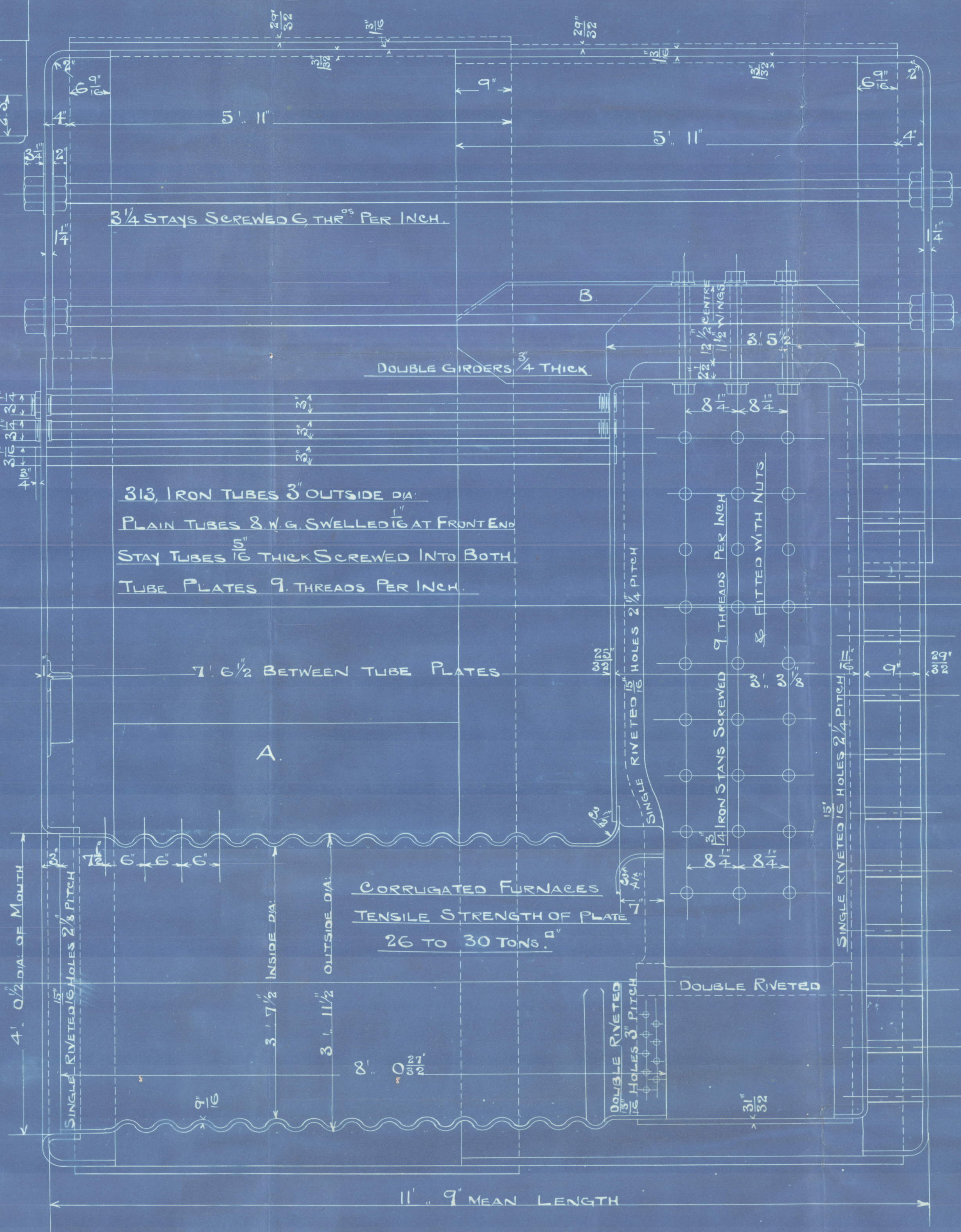
LETTERS A & B DENOTE  
POSITION OF BUTT STRAPS

15' 0" MEAN DIA.

3/4 STAYS SCREWED 8 THR<sup>ds</sup> PER INCH.

313 IRON TUBES 3" OUTSIDE DIA.  
PLAIN TUBES 8 W.G. SWELLED 16 AT FRONT END  
STAY TUBES 16 THICK SCREWED INTO BOTH  
TUBE PLATES 9 THREADS PER INCH

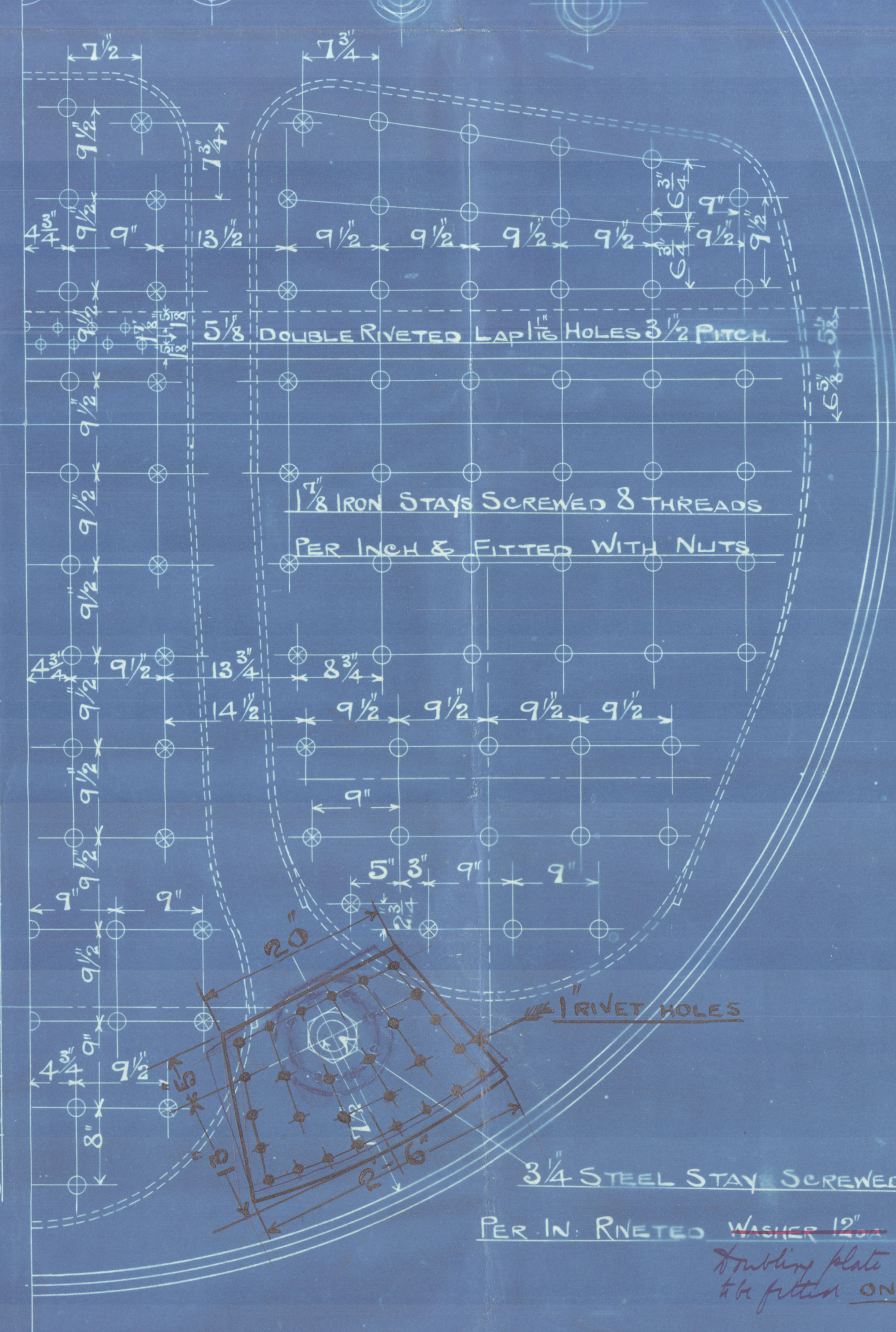
7' 6 1/2" BETWEEN TUBE PLATES



CORRUGATED FURNACES  
TENSILE STRENGTH OF PLATE  
26 TO 30 TONS "²"

11' 9" MEAN LENGTH

STAYS MARKED ⊗ ARE 2" IRON STAYS SCREWED 8 THREADS PER INCH & FITTED WITH NUTS



3/4 STEEL STAY SCREWED 8 THR<sup>ds</sup>  
PER IN. RIVETED WASHER 1 1/2" 27  
Fitting plate 3/8" THICK  
to fitting ON OUTSIDE



RETAIN

J. P. Cymbeline

Newcastle Report

No 44263  
WALLSEND SLIPWAY & ENGL<sup>d</sup>

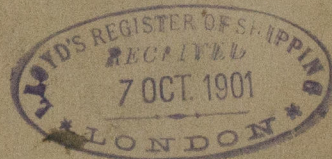
NEWCASTLE

MAIN BOILERS

N<sup>o</sup> 558 for

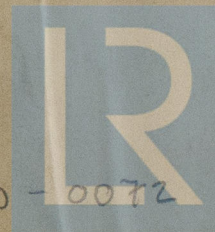
Mess<sup>rs</sup> Armstrongs Whitworth's

S.S. 726



No 6252  
Lloyd's List  
360 lbs  
G. A. H. 19/2/02

W960-0072



© 2020

Lloyd's Register  
Foundation