

MARINE ENGINE

**From BLAIR & CO., Ltd.,
STOCKTON-on-TEES.**

For Enclosure to

Messrs Lloyd's
Engineer Surveyors
Middlebro

W951-00172/2

MARINE ENGINES No 1809.

From BLAIR & CO., Ltd.,
STOCKTON-on-TEES.

For Enclosure to

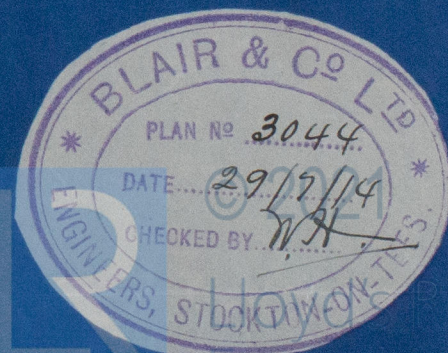
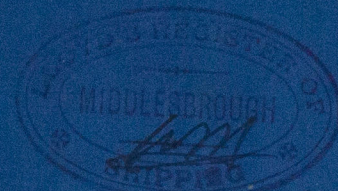
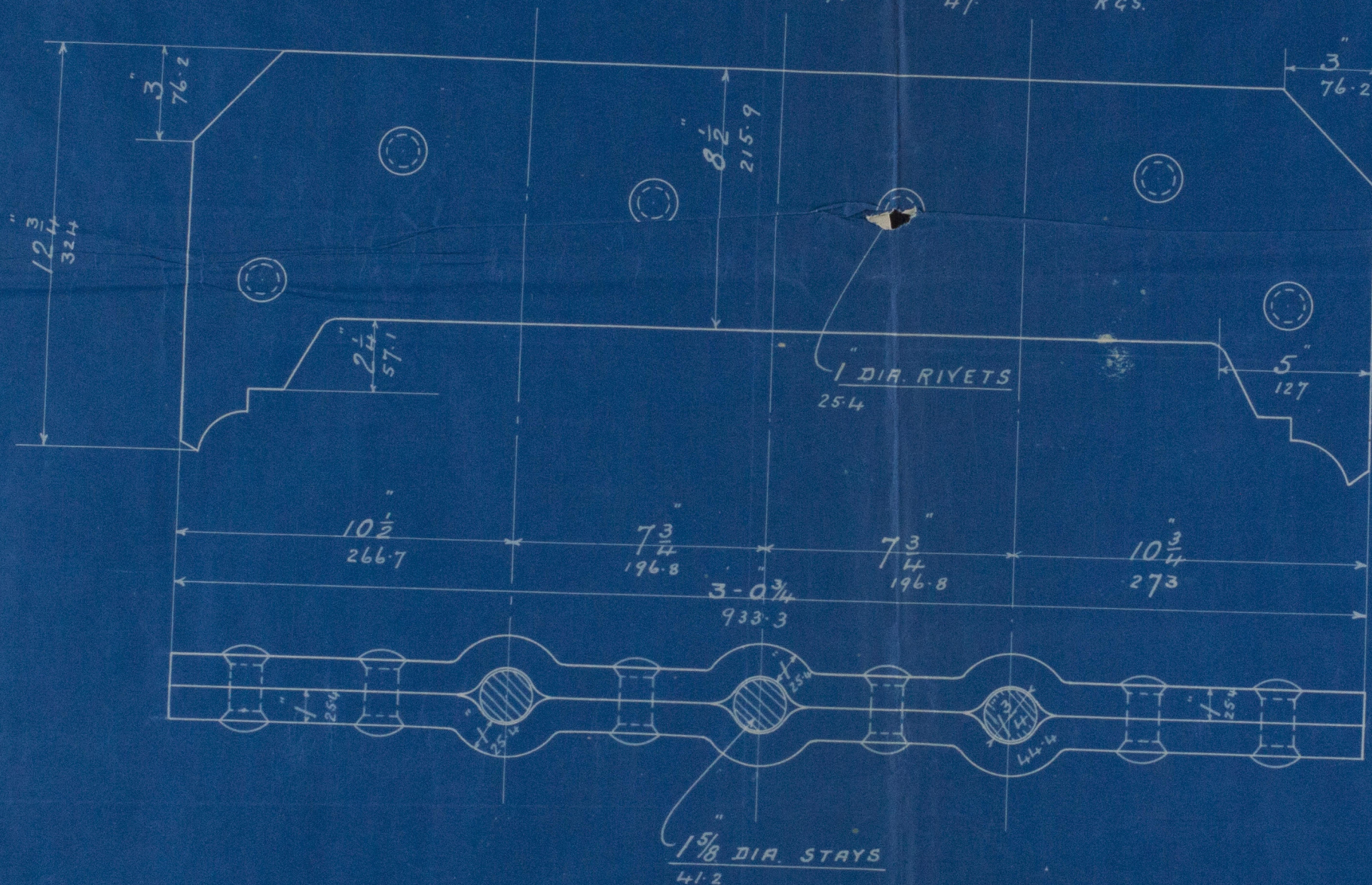
Messrs Lloyds
Engineer Surveyors
Middlesbrough
W951-00172/2

STEEL COMBUSTION CHAMBER GIRDERS

SCALE 3 INCH TO A FOOT.

TO BE TESTED BY "LLOYDS" "BOARD OF TRADE" & "HAMBURG BAUPOLIZEI BEHORDE."

TENSILE STRESS 26 TO 29.84 TONS.
40.94 47 KGS.



RECEIVED
JUL 30 1914
LLOYD'S REGISTER,
MIDDLESBROUGH.



© 2021

Lloyd's Register
Foundation