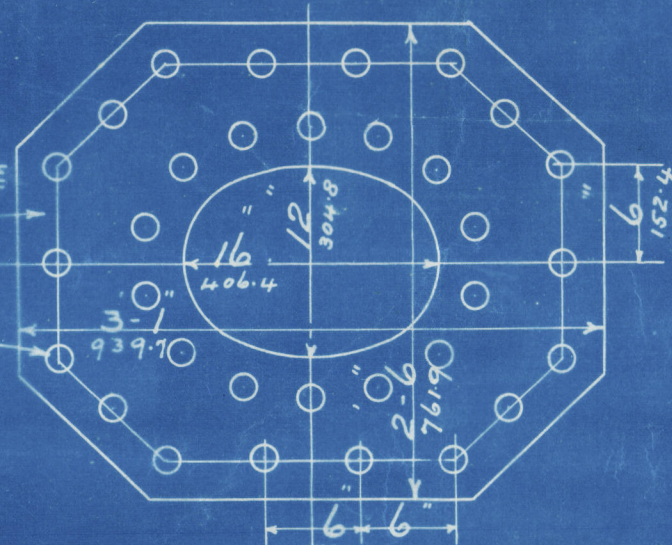


MESSRS SIR JAMES LAING & SONS LTD S.S. N^o 651.

17
32 THICK
38.89

9
16 DIA. HOLES
39.6



SCALE 1 INCH TO A FOOT.

180. LBS. W.P. TO "LLOYDS" "BOARD OF TRADE" & "HAMBURG BAUPOLIZEI BEHORDE" REQ^{TS}
12-65
FITTED WITH MESSRS J. HOWDENS' SYSTEM OF FORCED DRAUGHT.

FITTED WITH MESSRS J. HOWDEN'S SYSTEM OF FORCED DRAUGHT.

25/6/14

LOWER STEEL STAYS MARKED "D" ARE $2\frac{3}{4}$ EX. DIA.
5.055 EFF. AREA, SCREWED 6 THREADS.
3260

THE WING BOTTOM MANHOLES TO BE IN THE
BACK ENDS FOR THE TWO BOILERS PLACED AFT,
& THE CENTRE BOTTOM MANHOLE TO BE IN FRONT END.
THE THREE BOTTOM MANHOLES TO BE IN THE FRONT END OF FORWARD BOILER

TOTAL HEATING SURFACE IN THREE BOILERS = 10410 SQ. FEET

BLAIR & CO LTD
 PLAN NO. 2920
 DATE 23/6/14
 CHECKED BY. W. B. N.
 ENGINEERS, STOCKTON-ON-TEES

STEEL SCREW STAYS MARKED "A" ARE 2 EX. DIA. 2.659 EFF. AREA, NUTTED, SCREWED 8 THREADS

Paul
9.5.6.14

9.9.9

24.6.14

10

From BLAIR & CO., Ltd.,

STOCKTON-on-TEES.

For Enclosure to

Messrs Lloyds
Engineer Surveyors
Middlebros

W951-0016 2/2

3. Main Boilers

Mason Blair & Co. Lim^d

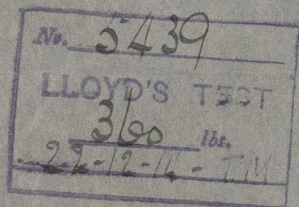
No. 1809

for

Mason Sir Jas. Laing & Sons Ltd

S.S. No. 651

Working Press 180 lbs

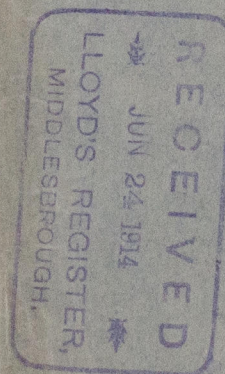


Mdb. F. E. Mchys.

Report No. 8817

Bay State

SUNDERLAND No. 26374



W951-0016 1/2



© 2021

Lloyd's Register
Foundation