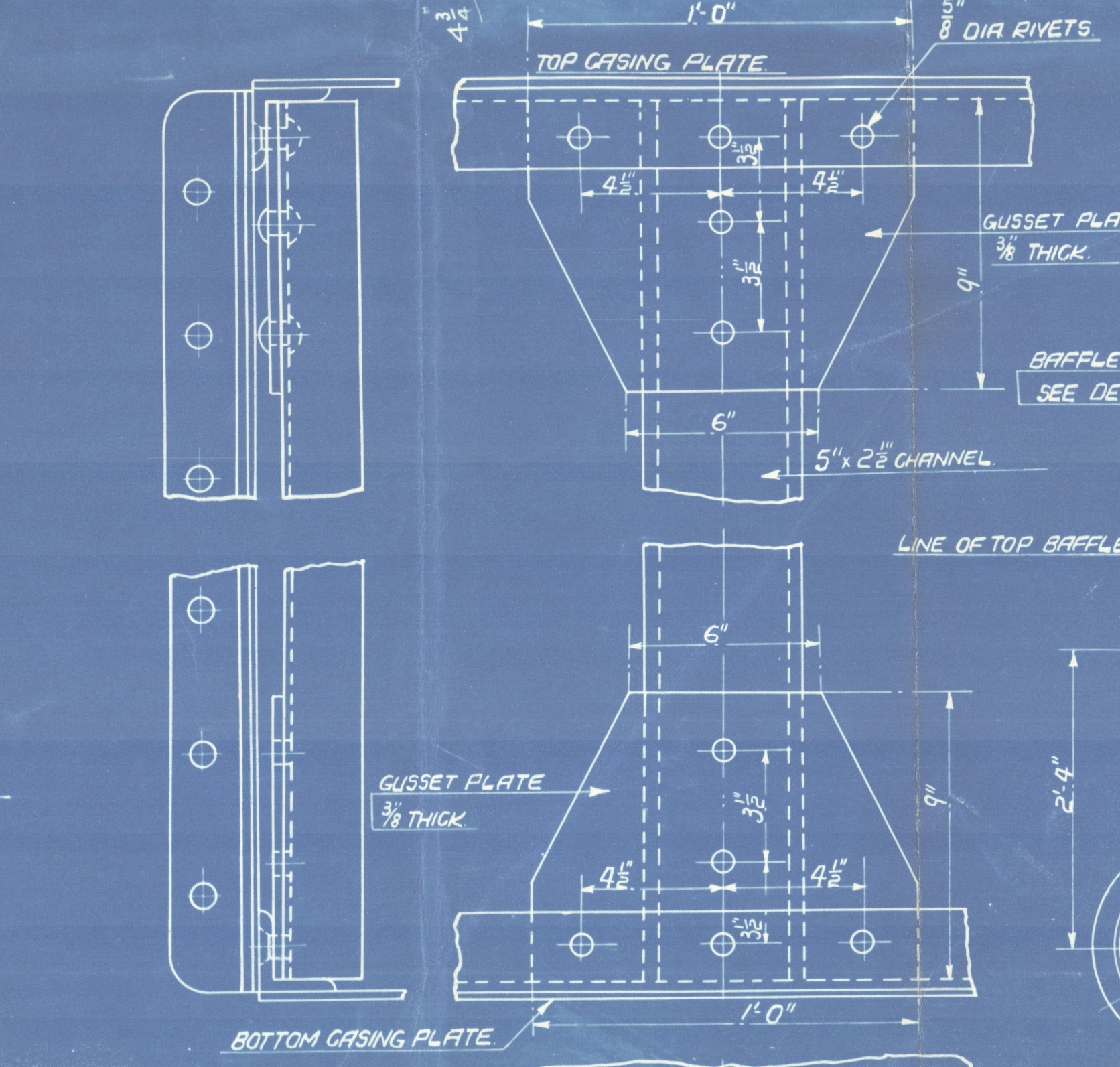
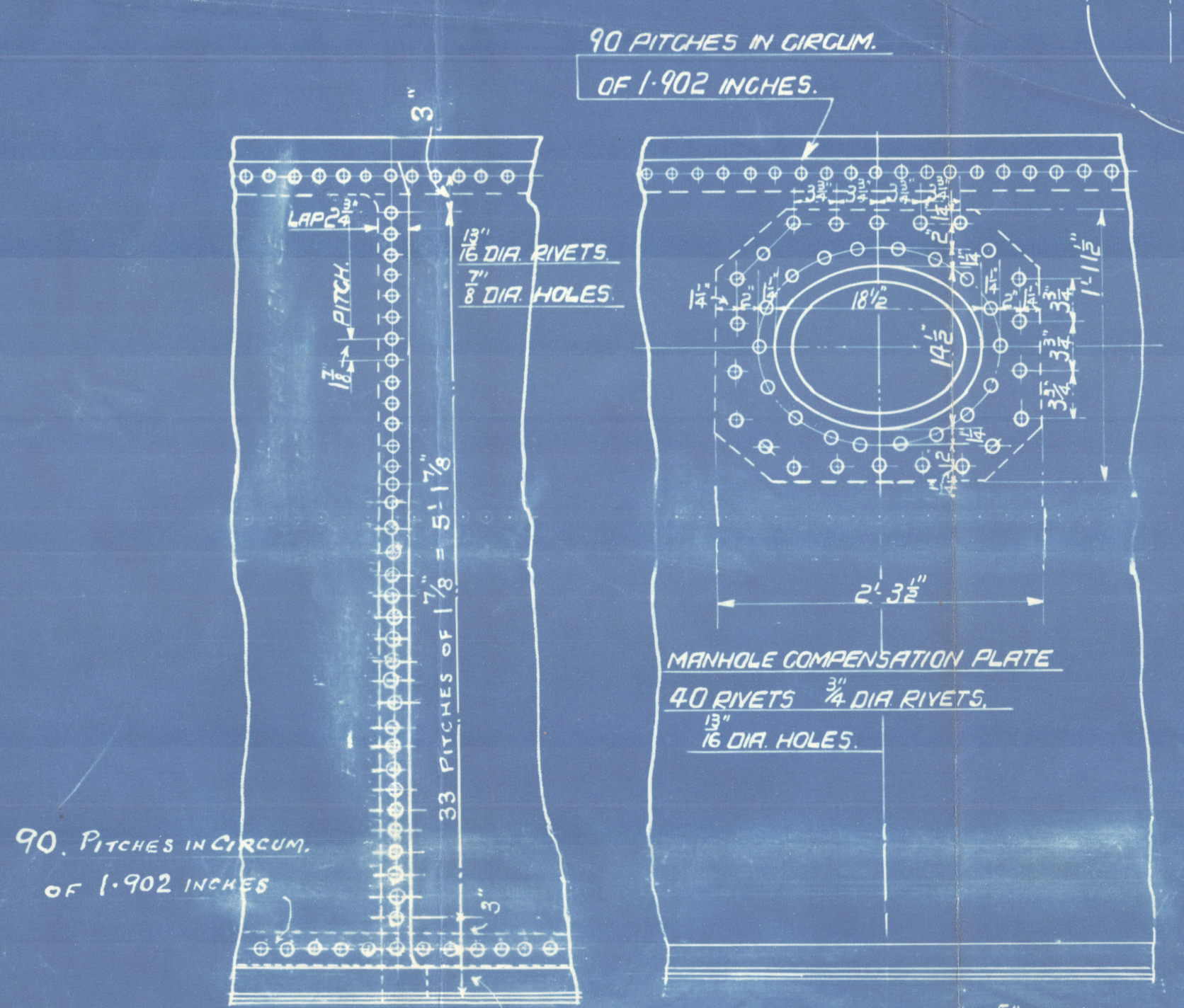
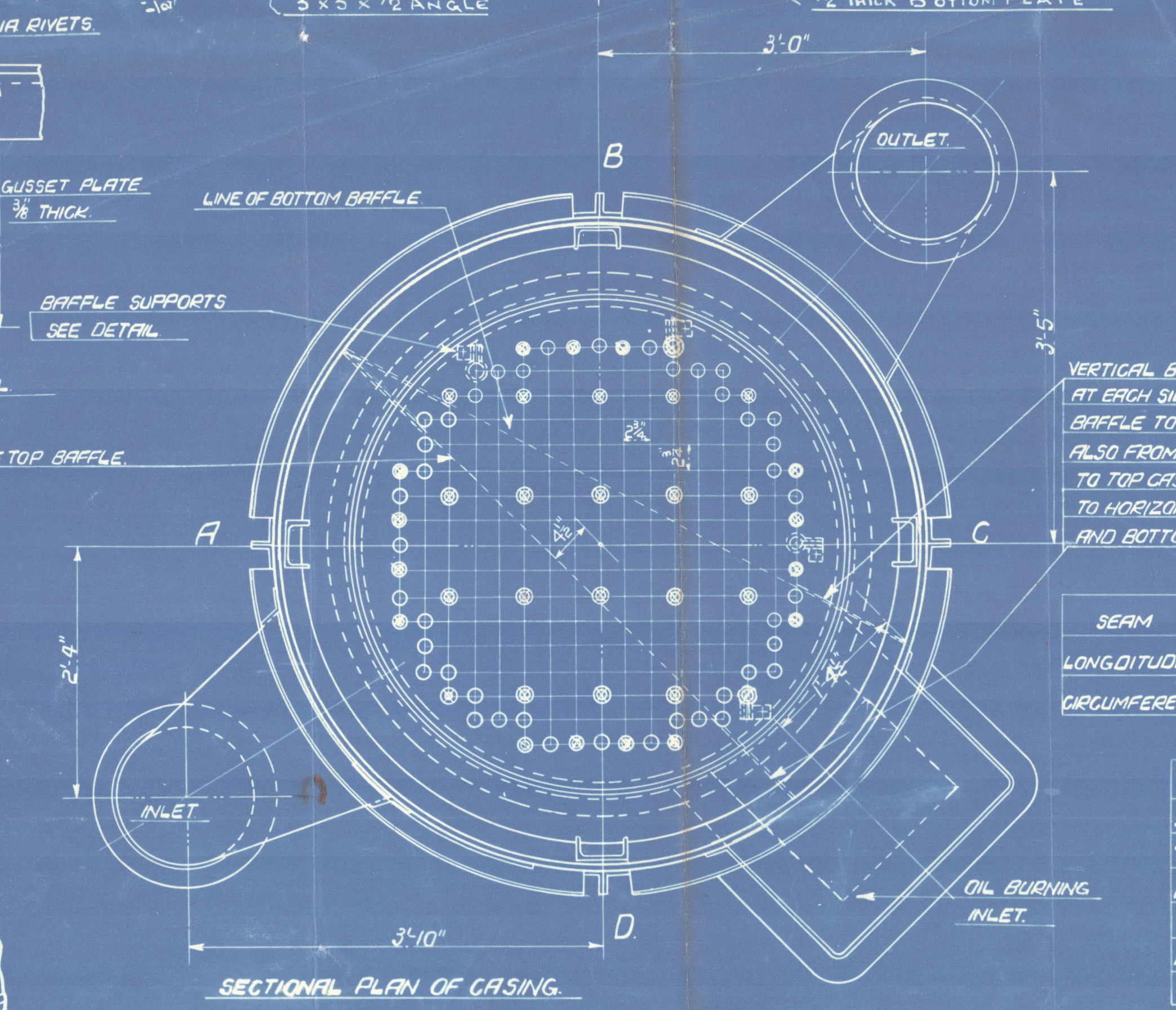
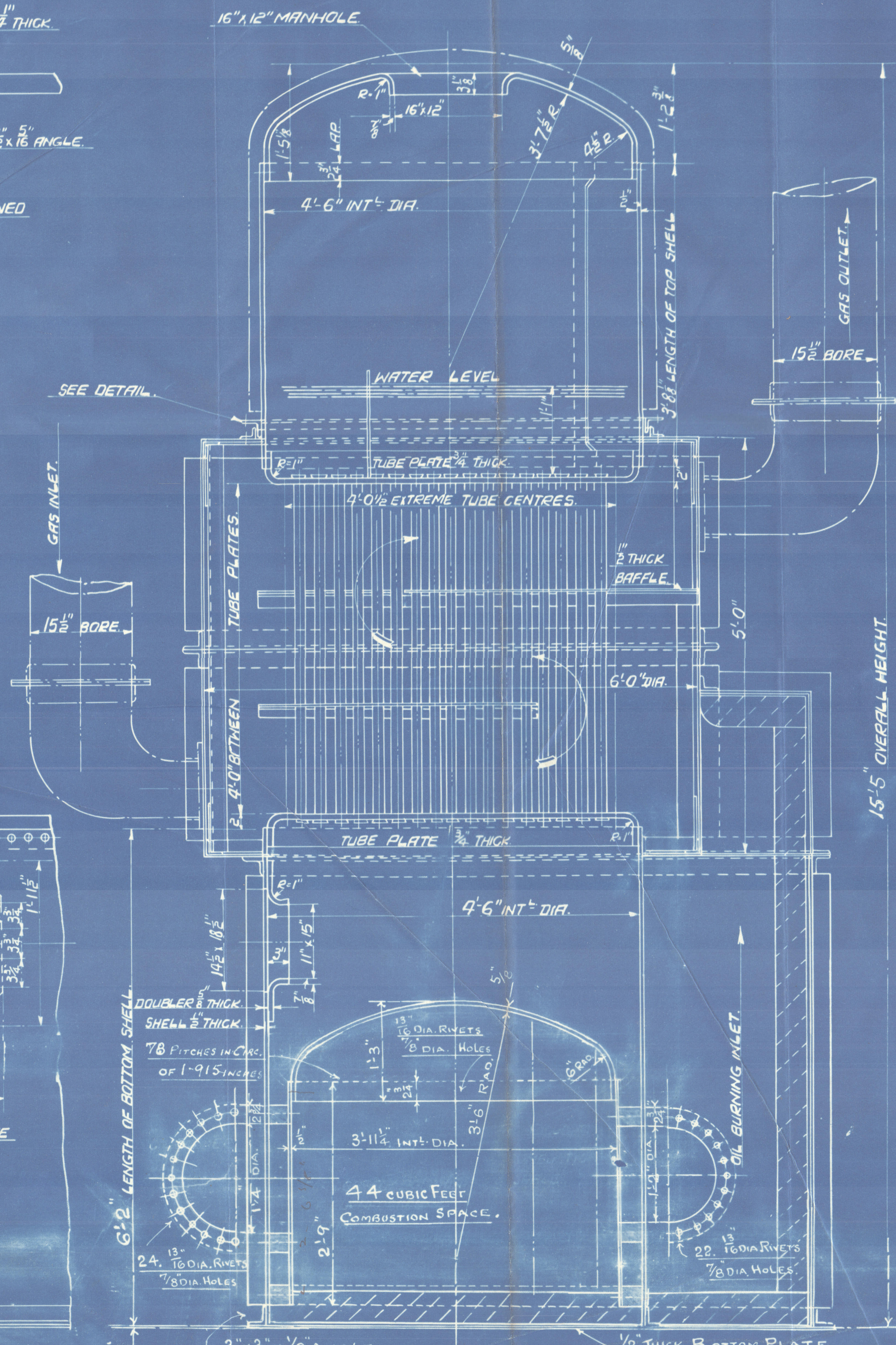


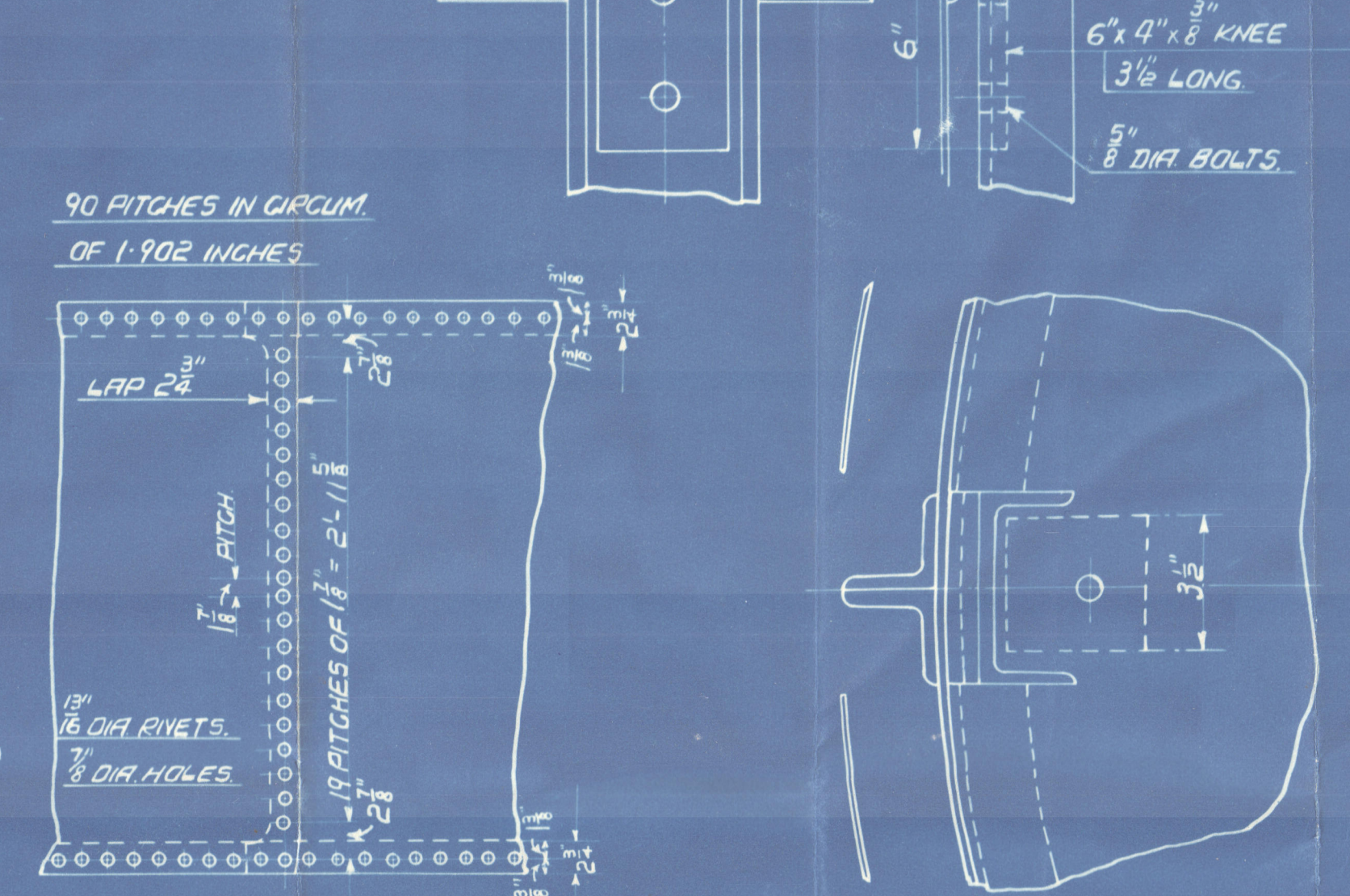
DETAIL OF ATTACHMENT OF
CASING TO TOP AND BOTTOM PLATES.
FULL SIZE



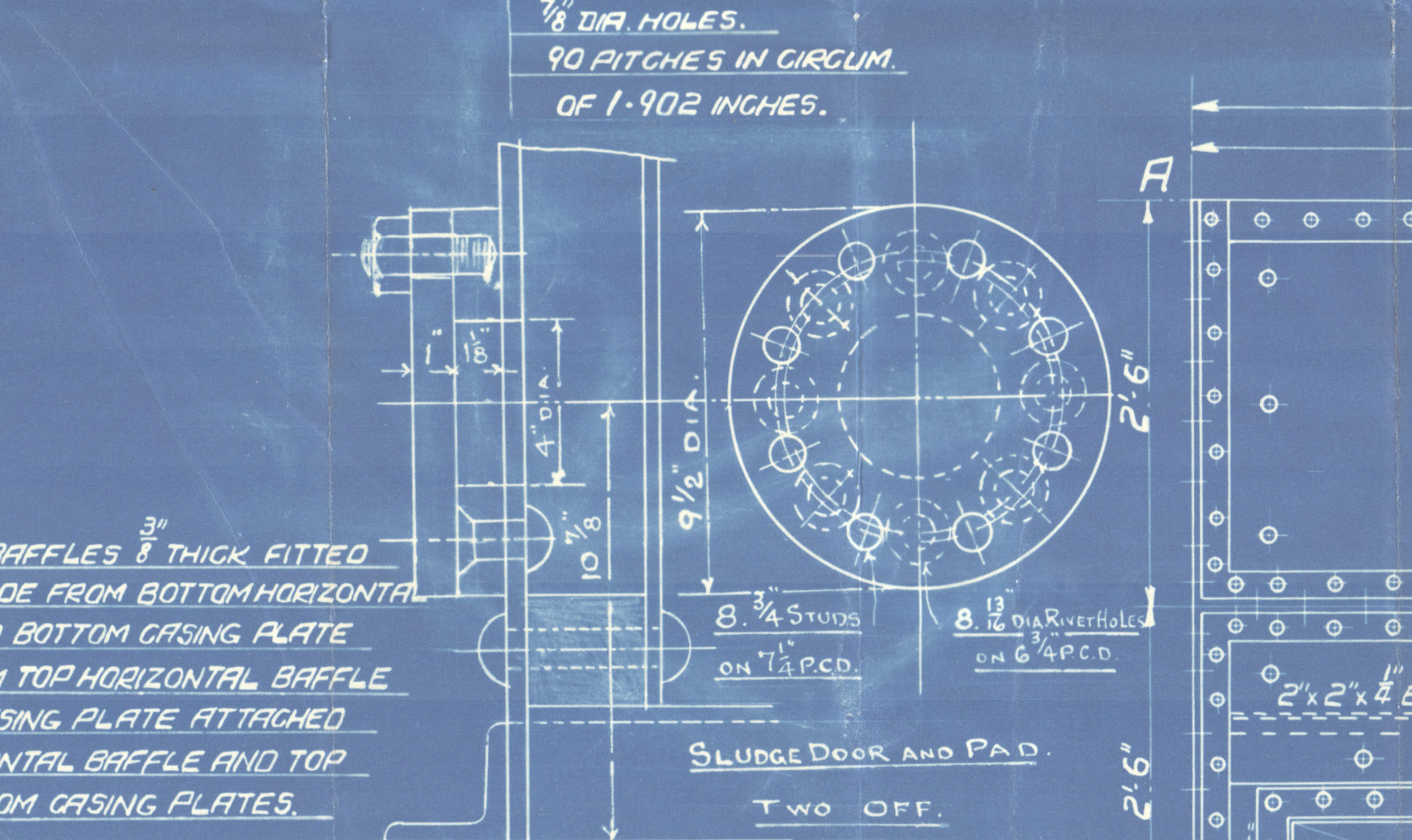
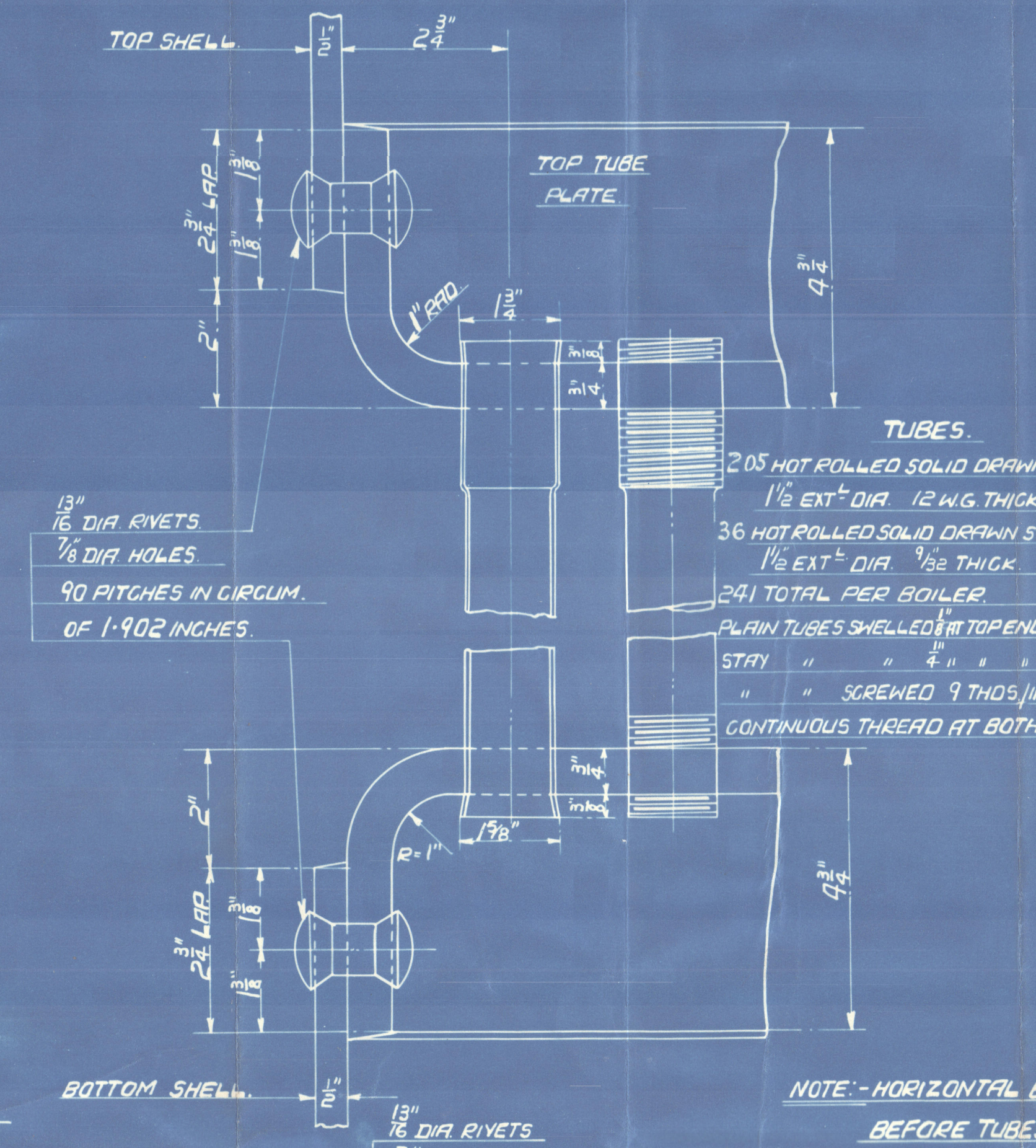
DETAIL OF VERTICAL
SUPPORTS FOR CASING.
SCALE 1/4" = 1' FT.



SECTIONAL PLAN OF CASING.



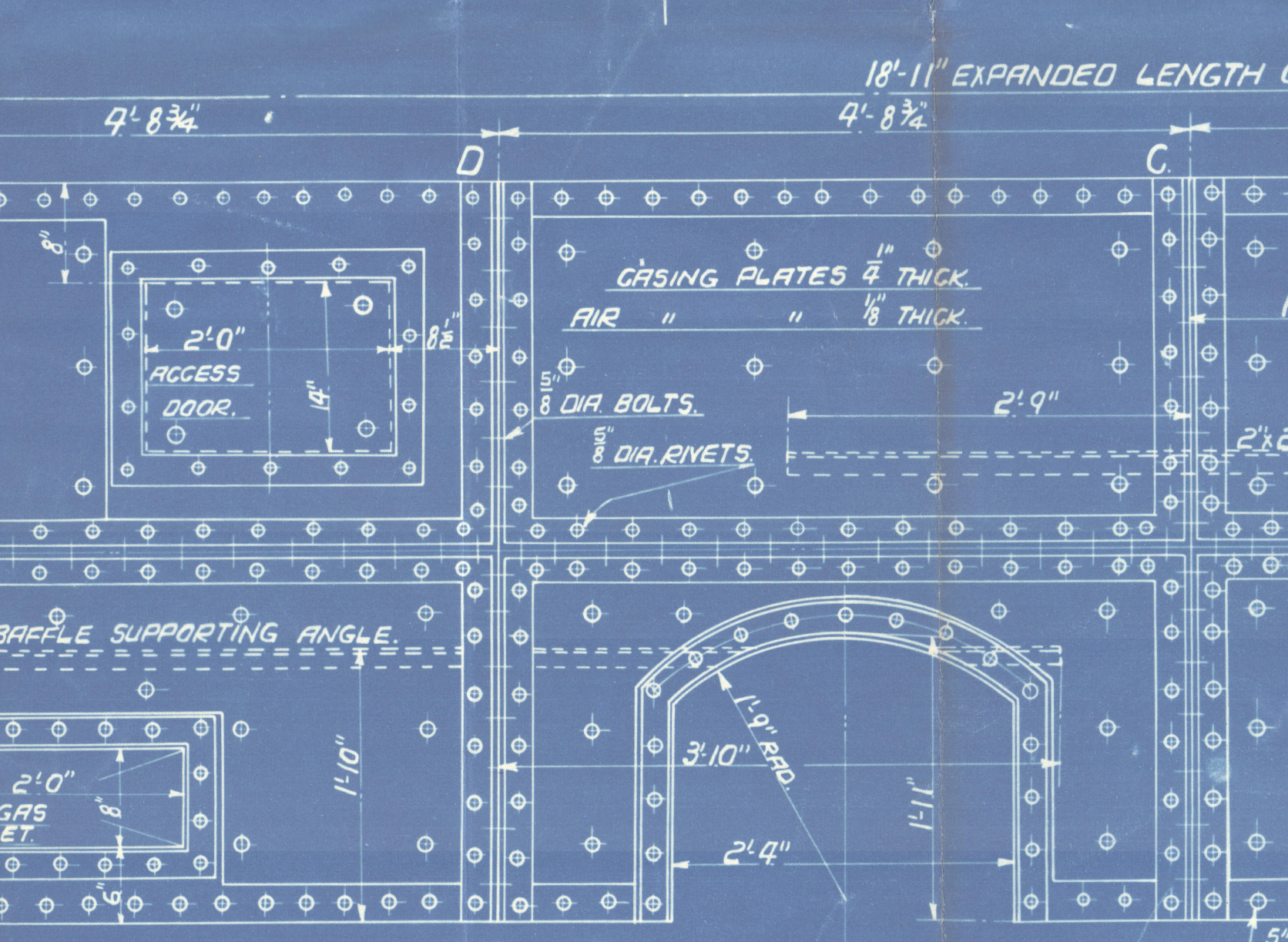
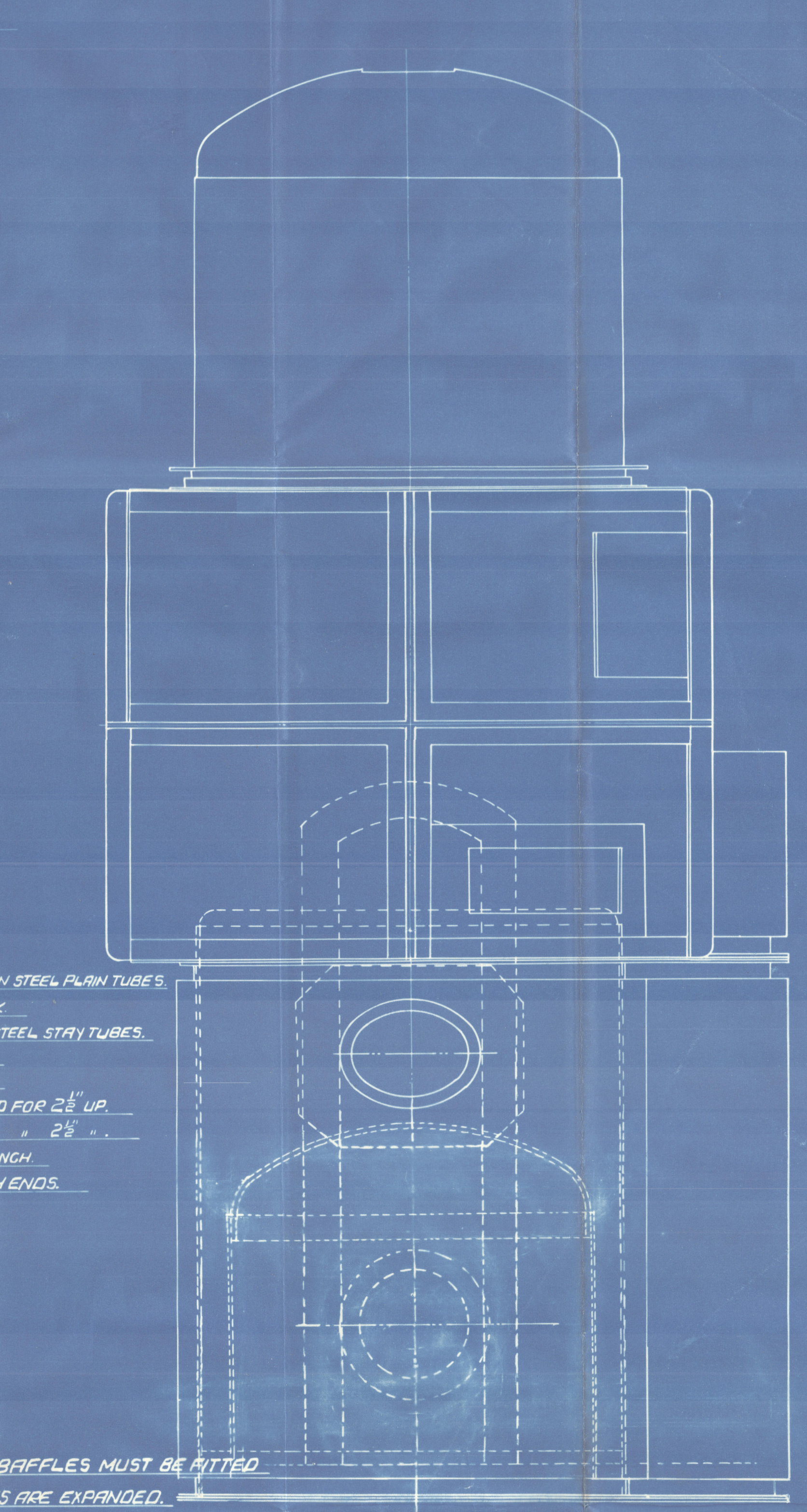
DETAIL OF BAFFLE ATTACHMENT
TO VERTICAL SUPPORTS.



SEAM	DIA OF RIVET	DIA OF HOLE	PLATE %	RIVET %	WORKING PRESS. BY RULE
LONGITUDINAL	13/16	7/8	53-3	48-08	105-6 LBS/SQ IN.
CIRCUMFERENTIAL	13/16	7/8	53-9	47-4	

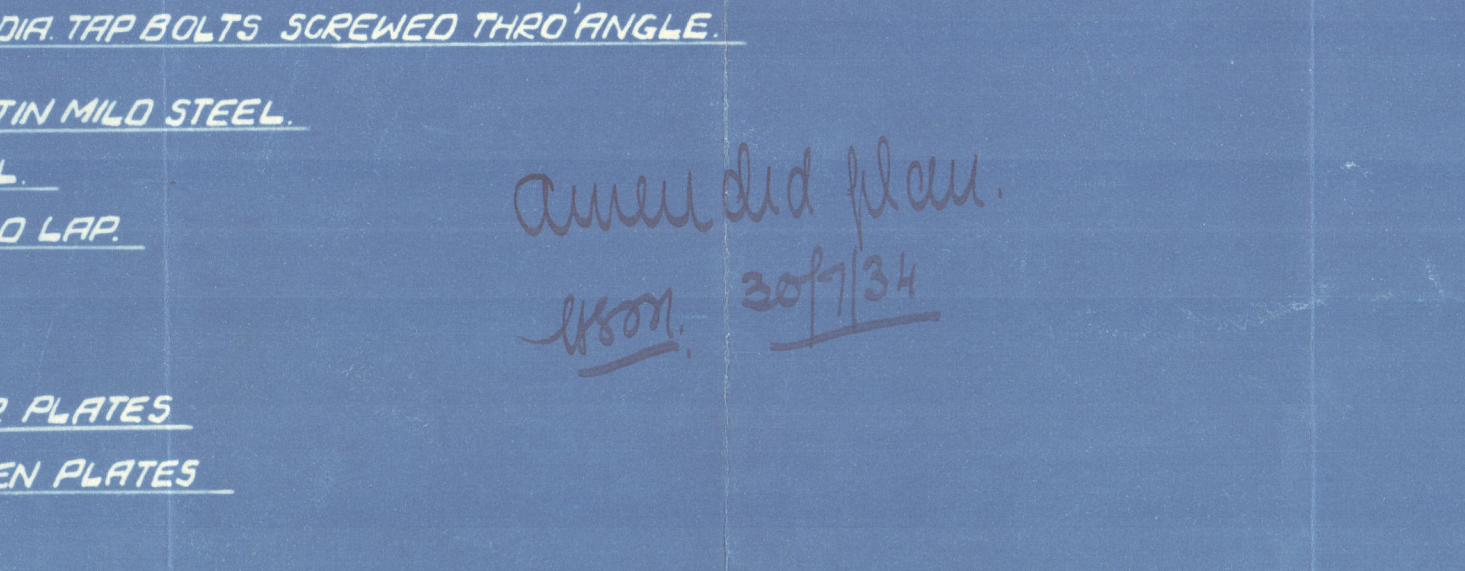
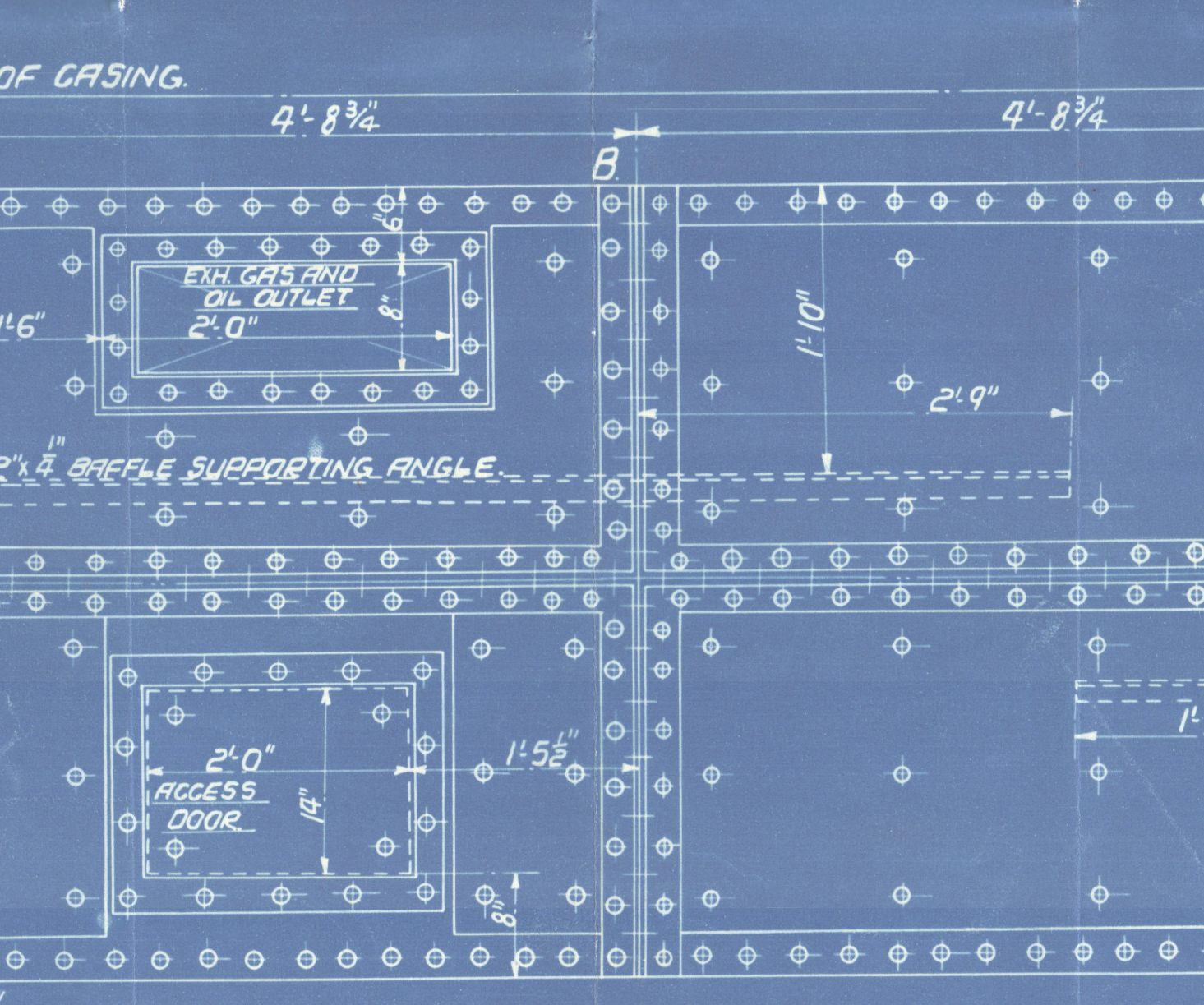
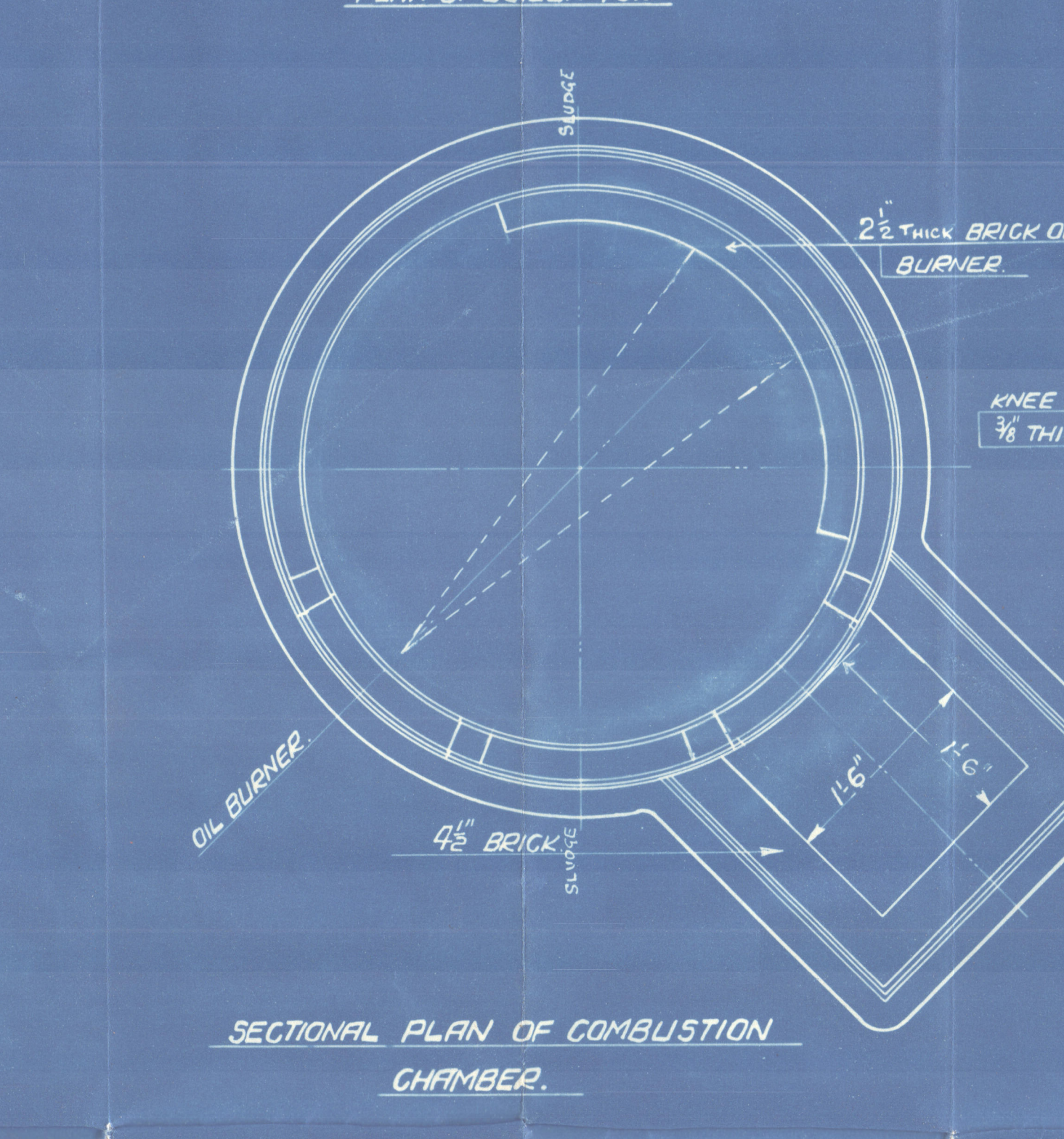
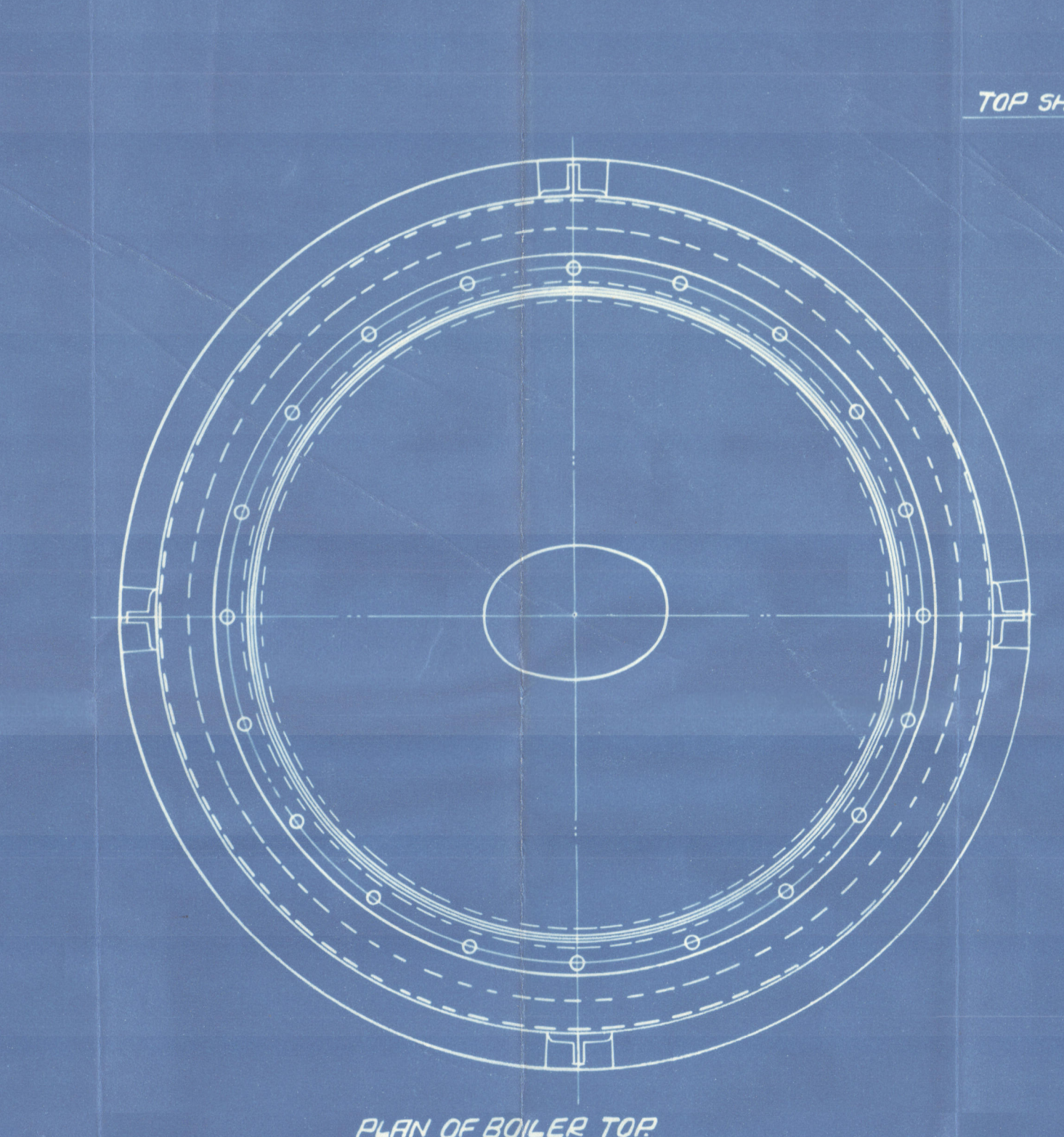
PURPOSE	THICKNESS	TENSILE
SHELL	1/2	28-32 TONS/SQ IN.
TOP END WITH MANHOLE	3/8	26-30 " "
BOTTOM END	3/8	26-30 " "
TUBE PLATES	3/8	26-30 " "
RIVET BARS	-	26-30 " "
LOWER INNER SHELL	1/2	26-30 " "

NOTE - HORIZONTAL BAFFLES MUST BE FITTED
BEFORE TUBES ARE EXPANDED.

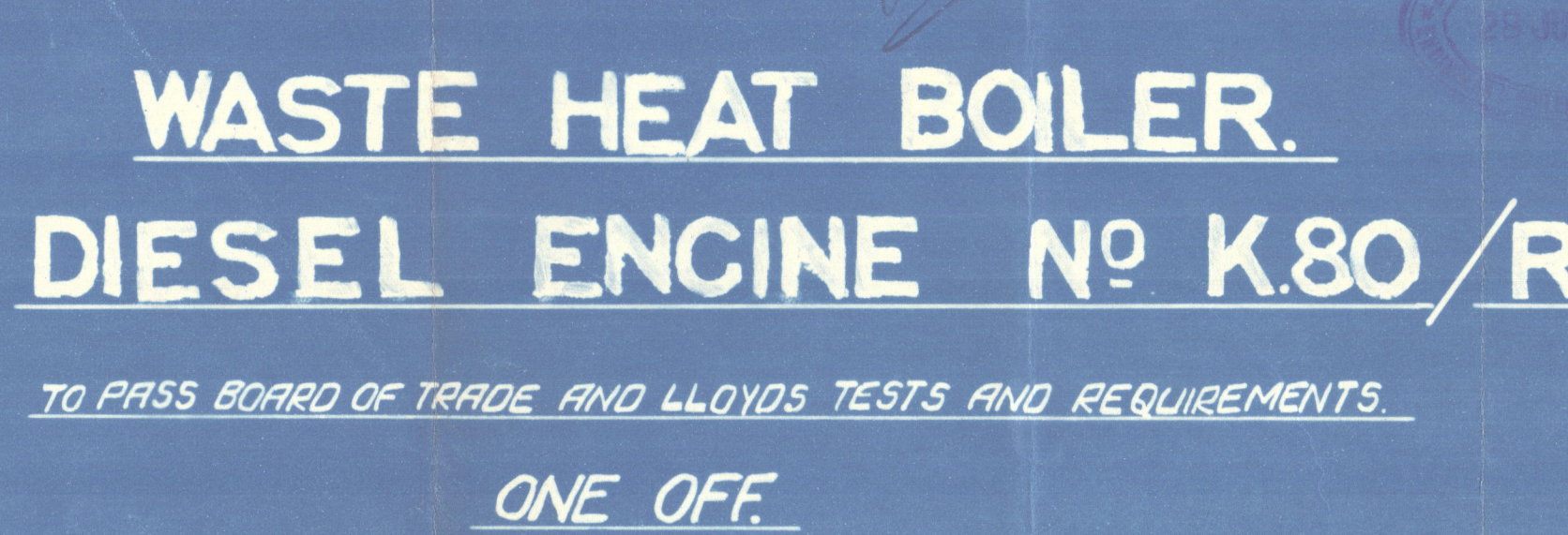
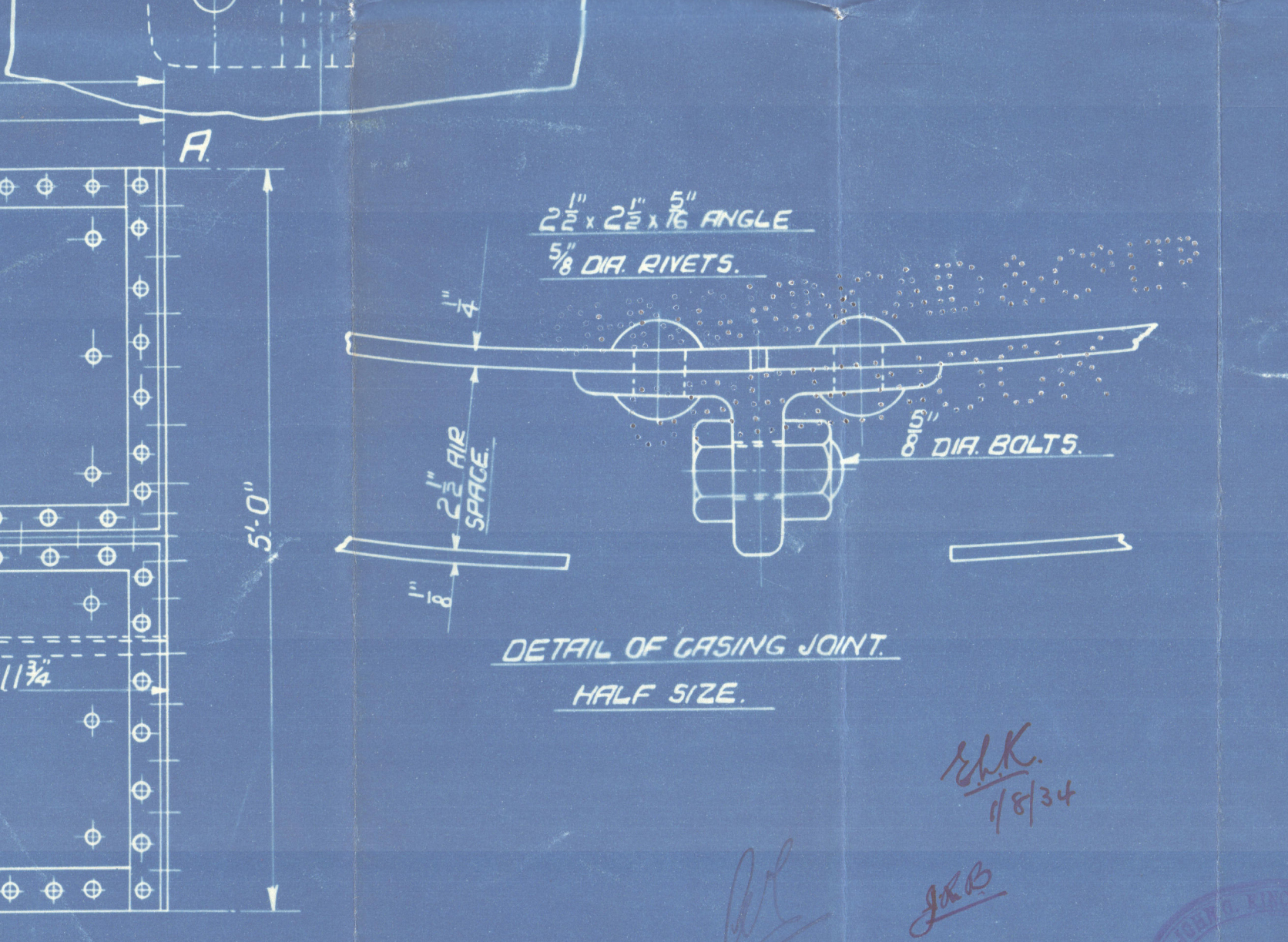
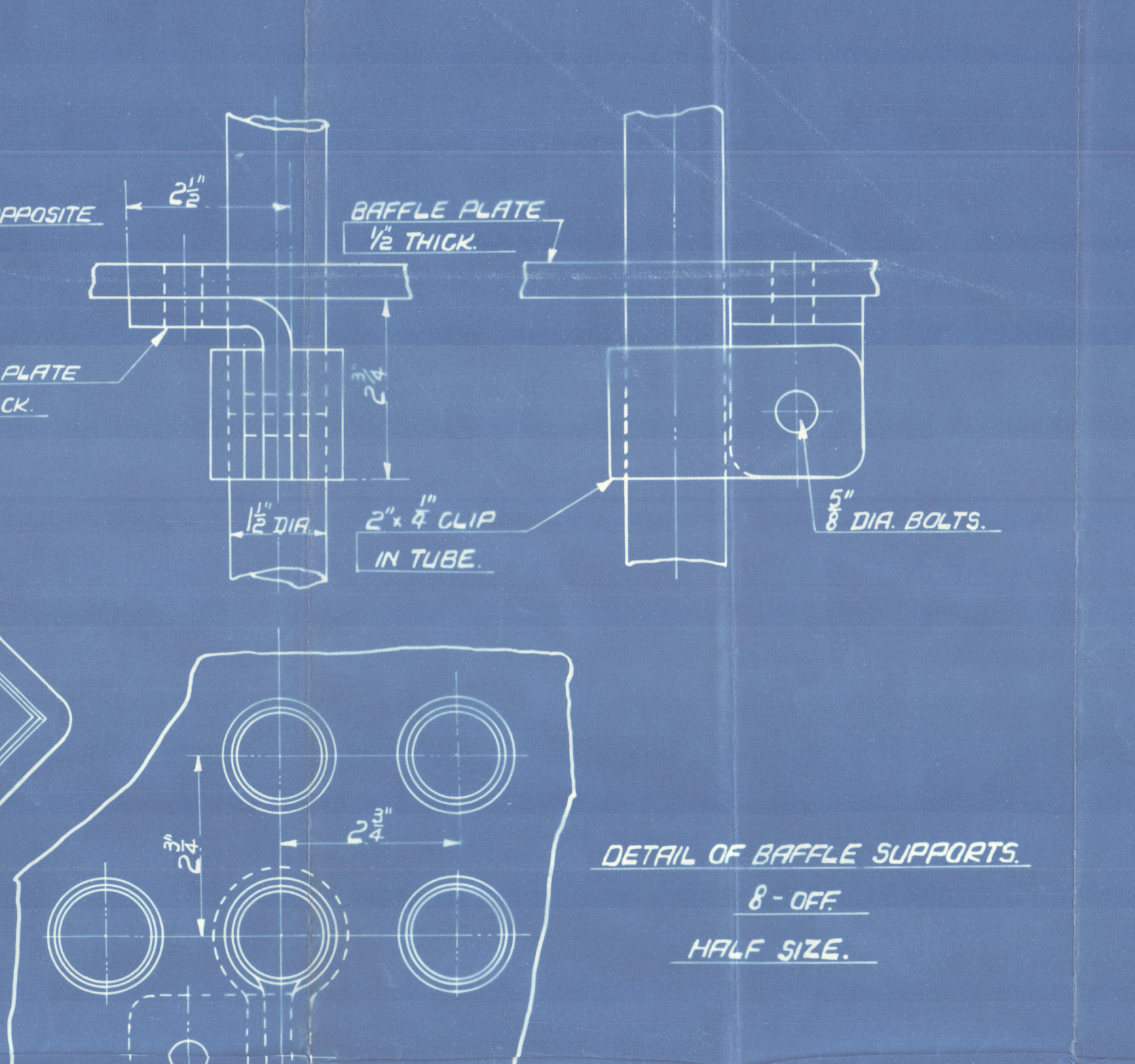
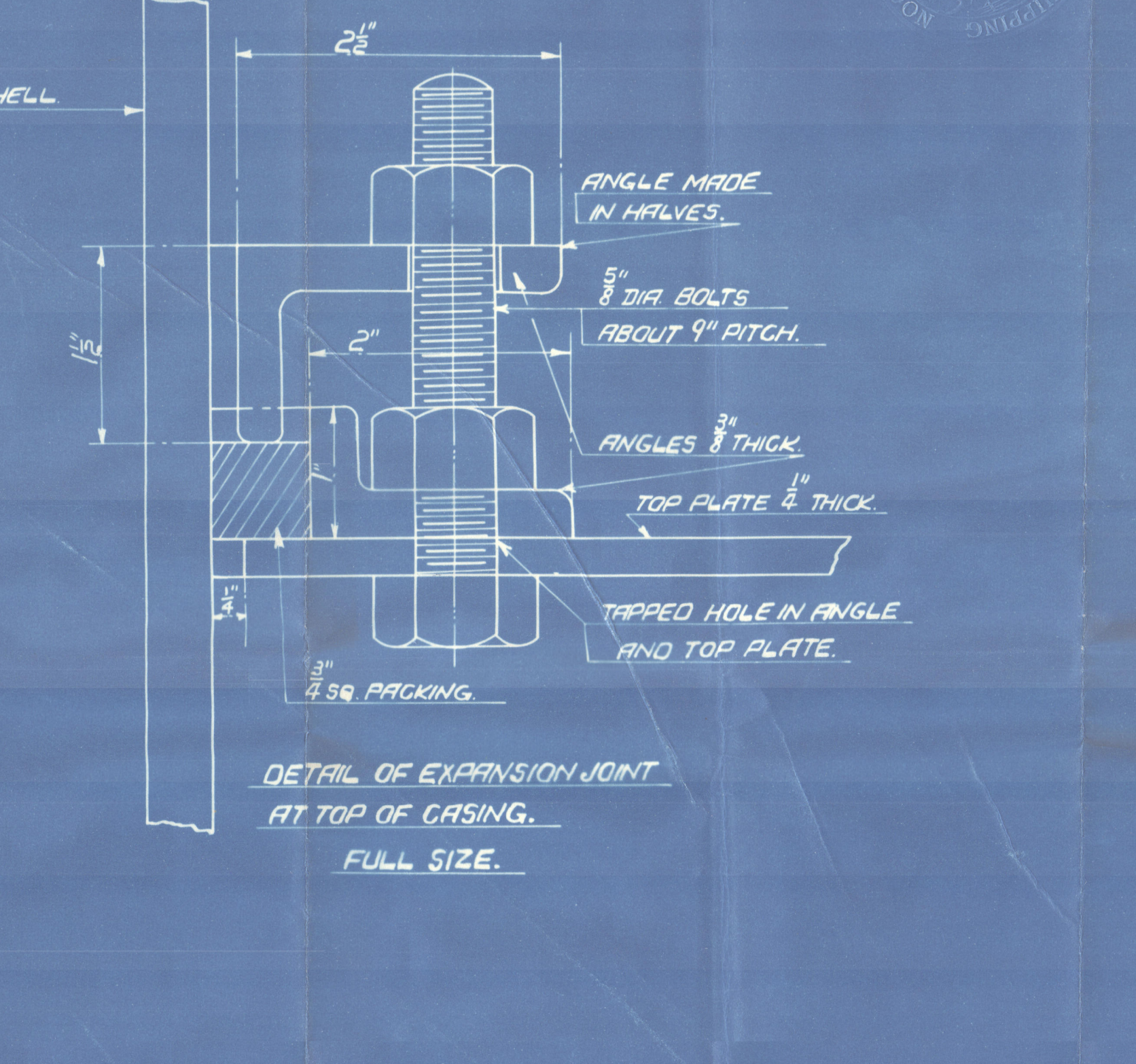


HEAT SURFACE 241 TUBES 1 1/2 EXT DIA	375 SQ. FT.
STEAM SPACE	53-6 CUB. FT.
HEIGHT OF WATER IN BOILER	1-72 TONS
COMBUSTION SPACE OIL BURN CHAMBER	42 CUB. FT.

ALL PLATES & RIVETS OF SIEMENS - MARTIN MILD STEEL.
TUBES, HOT-ROLLED SOLID DRAWN STEEL.
LONGITUDINAL & CIRCUMFERENTIAL SEAMS SINGLE RIVETED LAP.
WORKING PRESSURE 100 LBS/SQ IN.
TEST PRESSURE 200 LBS/SQ IN.
ALL RIVET HOLES TO BE DRILLED AFTER PLATES
ARE BENT AND FITTED TOGETHER, THEN PLATES
TAKEN APART AND BURRS REMOVED.



DETAIL OF BAFFLE SUPPORTS.
8' OFF.
HALF SIZE.



DETAIL OF CASING JOINT.
HALF SIZE.

WASTE HEAT BOILER.
DIESEL ENGINE NO K.80/R.
TO PASS BOARD OF TRADE AND LLOYD'S TESTS AND REQUIREMENTS.
ONE OFF.
SCALE: 1" = ONE FT. AS MARKED.

Nasti Heat-Boiler



Kincaids 1180

WD 1000

Litigous 842

Amended plan

"M.V." Master

Speenack List Entry Report No 19929.



W95-0074



© 2020

Lloyd's Register
Foundation