

MIDSHIP SECTION

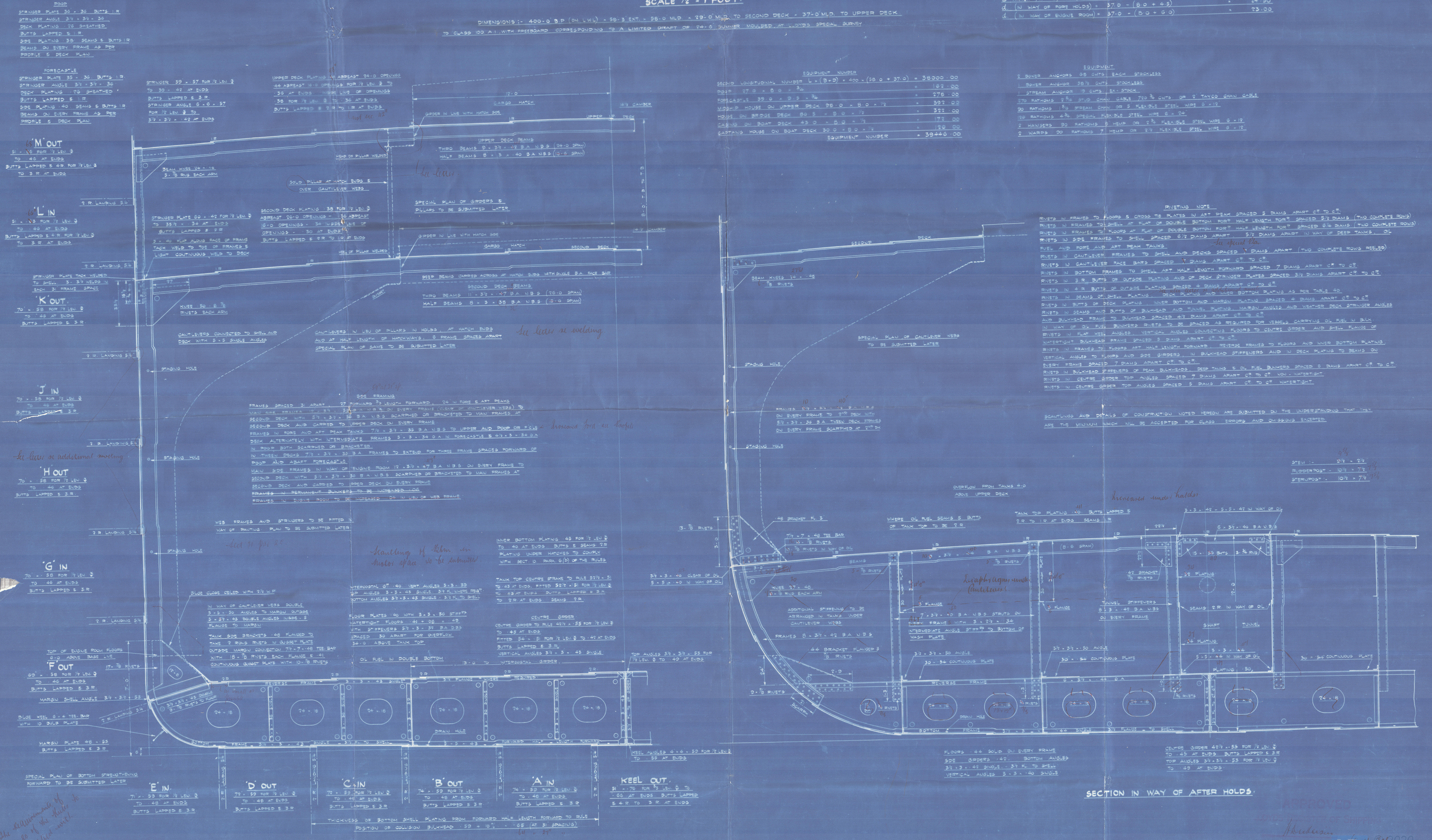
S.M.V. N^o 872

SCALE 1/2" = 1 FOOT.

DIMENSIONS: 1. 400'-0" B.P. (ON L.W.L.) x 50'-3" EXT. x 50'-0" MLD. x 29'-0" MLD. TO SECOND DECK x 37'-0" MLD. TO UPPER DECK
TO CLASS 100 A.I. WITH FREEBOARD CORRESPONDING TO A LIMITED DRAFT OF 24'-6" SUMMER MOULDED AT LLOYD'S SPECIAL SURVEY



LLOYD'S NUMERALS	
FIRST LONGITUDINAL NUMBER $L \times D = 400 \times 0 = 35.42$	= 14108.00
SECOND LONGITUDINAL NUMBER $L \times (B + D) = 400 \times (50 + 35.42) = 37368.00$	= 37368.00
PROPORTION $\frac{D}{L} = \frac{0}{400} = 0.00$	= 10.81
D TAKEN AT 27.42 (TO SUIT 24'-6" MLD. DRAFT) $+ 0.0$	= 35.42
d (IN WAY OF FORE HOLDS) $= 37.0 - (0.0 + 4.9)$	= 32.10
d (IN WAY OF ENGINE ROOM) $= 37.0 - (0.0 + 0.0)$	= 37.00

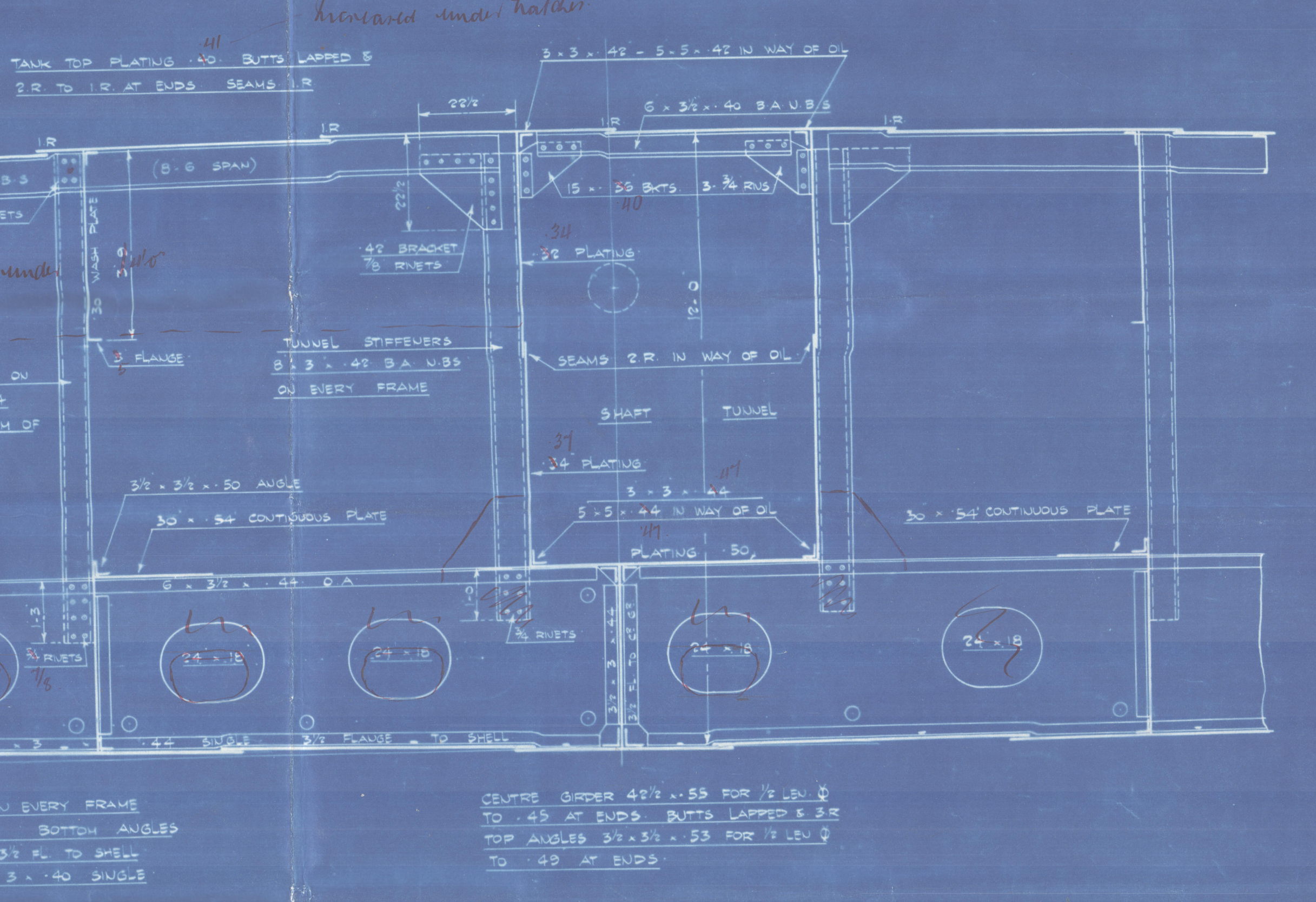


EQUIPMENT	
2 BOWERS ANCHORS 90 CWT. EACH STOCKLESS	
1 BOWERS ANCHOR 30 1/2 CWT. STOCKLESS	
1 STREAM ANCHOR 10 CWT. STOCK	
370 RATHOMS 2 1/2 STUB CHAIN CABLE 7/32 CWT. OR 4" TAYCO CHAIN CABLE	
20 RATHOMS 1 1/2 STUB CHAIN OR 5 FLEXIBLE STEEL WIRE 8 x 12	
10 RATHOMS 4 1/2 SPECIAL FLEXIBLE STEEL WIRE 6 x 24	
2 HANGERS 30 RATHOMS 8 HEMP OR 2 1/2 FLEXIBLE STEEL WIRE 8 x 12	
2 WARPS 20 RATHOMS 7 HEMP OR 2 1/2 FLEXIBLE STEEL WIRE 8 x 12	

RIVETING NOTE
RIVETS IN FRAMES TO FLOORS & CROSS PLATES IN ART. DECK SPACED 5 DIAM. APART C/P TO C/P.
RIVETS IN FRAMES TO SHELL AT FLAT OF DOUBLE BOTTOM FORD HALF LENGTH FORD SPACED 5/4 DIAM. (TWO COMPLETE ROWS)
RIVETS IN FRAMES TO FLOORS AT FLAT OF DOUBLE BOTTOM FORD HALF LENGTH FORD SPACED 5/4 DIAM. (TWO COMPLETE ROWS)
RIVETS IN SIDE FRAMES TO SHELL SPACED 6 1/2 DIAM. APART 5/2 DIAM. APART IN WAY OF DEEP TANKS. OL
FUEL AND FORD AND ART. DECK TANKS.
RIVETS IN CANTILEVER FRAMES TO SHELL AND DECK SPACED 7 DIAM. APART (TWO COMPLETE ROWS REELED)
RIVETS IN CANTILEVER FACE BARS SPACED 7 DIAM. APART C/P TO C/P.
RIVETS IN BOTTOM FRAMES TO SHELL ART. HALF LENGTH FORWARD SPACED 7 DIAM. APART C/P TO C/P.
RIVETS IN 3 R. BUTTS OF OUTSIDE PLATING AND OF DECK STRINGER PLATES SPACED 3 1/2 DIAM. APART C/P TO C/P.
RIVETS IN 4 R. BUTTS OF OUTSIDE PLATING SPACED 4 DIAM. APART C/P TO C/P.
RIVETS IN DEAMS OF SHELL PLATING, DECK PLATING AND INNER BOTTOM PLATING AS PER TABLE 40.
RIVETS IN BUTTS OF DECK PLATING, INNER BOTTOM AND MARGIN PLATING SPACED 4 DIAM. APART C/P TO C/P.
RIVETS IN DEAMS AND BUTTS OF BULKHEAD AND TUNNEL PLATING, MARGIN ANGLES AND WEATHER DECK STRINGER ANGLES
AND BULKHEAD FRAMES TO BULKHEAD SPACED 4 1/2 DIAM. APART C/P TO C/P.
IN WAY OF OIL FUEL BUNKERS, RIVETS TO BE SPACED AS REQUIRED FOR VESSELS CARRYING OIL FUEL IN BULK.
RIVETS IN FLAT KEEL ANGLES, VERTICAL ANGLES CONNECTING FLOORS TO CENTRE GIRDER AND SHELL PLATING OF
WATERTIGHT BULKHEAD FRAMES SPACED 5 DIAM. APART C/P TO C/P.
RIVETS IN FRAMES TO FLOORS ART. HALF LENGTH FORWARD, REVERSE FRAMES TO FLOORS AND INNER BOTTOM PLATING
VERTICAL ANGLES TO FLOORS AND SIDE GIRDERS, IN BULKHEAD STIFFENERS AND IN DECK PLATING TO BEAMS ON
EVERY FRAME SPACED 7 DIAM. APART C/P TO C/P.
RIVETS IN BULKHEAD STIFFENERS OF PEAK BULKHEADS, DEEP TANKS & OIL FUEL BUNKERS SPACED 5 DIAM. APART C/P TO C/P.
RIVETS IN CENTRE GIRDER TOP ANGLES SPACED 7 DIAM. APART C/P TO C/P. WATER TIGHT.
RIVETS IN CENTRE GIRDER TOP ANGLES SPACED 5 DIAM. APART C/P TO C/P. WATER TIGHT.

SCANTLINGS AND DETAILS OF CONSTRUCTION NOTED HEREON ARE SUBMITTED ON THE UNDERSTANDING THAT THEY ARE THE MINIMUM WHICH WILL BE ACCEPTED FOR CLASS. ERRORS AND OMISSIONS EXCEPTED.

STEEL 10 5/8 x 2 1/2
RUDDERPOST 10 1/2 x 7 1/2
STERNPOST 10 1/2 x 7 1/2



SECTION IN WAY OF AFTER HOLDS.
APPROVED
LLOYD'S REGISTER OF SHIPPING
H. J. B. 2020
Lloyd's Register Foundation

LITHGOWS LTD

Nº 872.

MIDSHIP SECTION.

M.V. "Master"

Greenock First Entry Report Nº 19929.

W95-0073



© 2020

Lloyd's Register
Foundation