

20/4/14

STEEL BOILER

Note:
All Plates Rivets & Stay Bars To Be Of Siemens Martin Steel.
All Rivet Holes Throughout The Boiler To Be Drilled In Place After The Plates Are Bent.
The Screw Stays Are $1\frac{1}{2}$ " $\frac{1}{8}$ " & $1\frac{1}{2}$ " Effective Dia. Screwed Into Both Plates &
NUTTED AS SHOWN. A MANHOLE IN SHELL $16\frac{1}{2}$ " WITH SHORTER AXIS
LONGITUDINAL & A DOUBLING PLATE $2\frac{1}{2}$ " $6 \times 2\frac{1}{2}$ " $\frac{3}{32}$ " THICK FITTED ROUND IT.
All Flanged Plates To Be Annealed After Flanging.

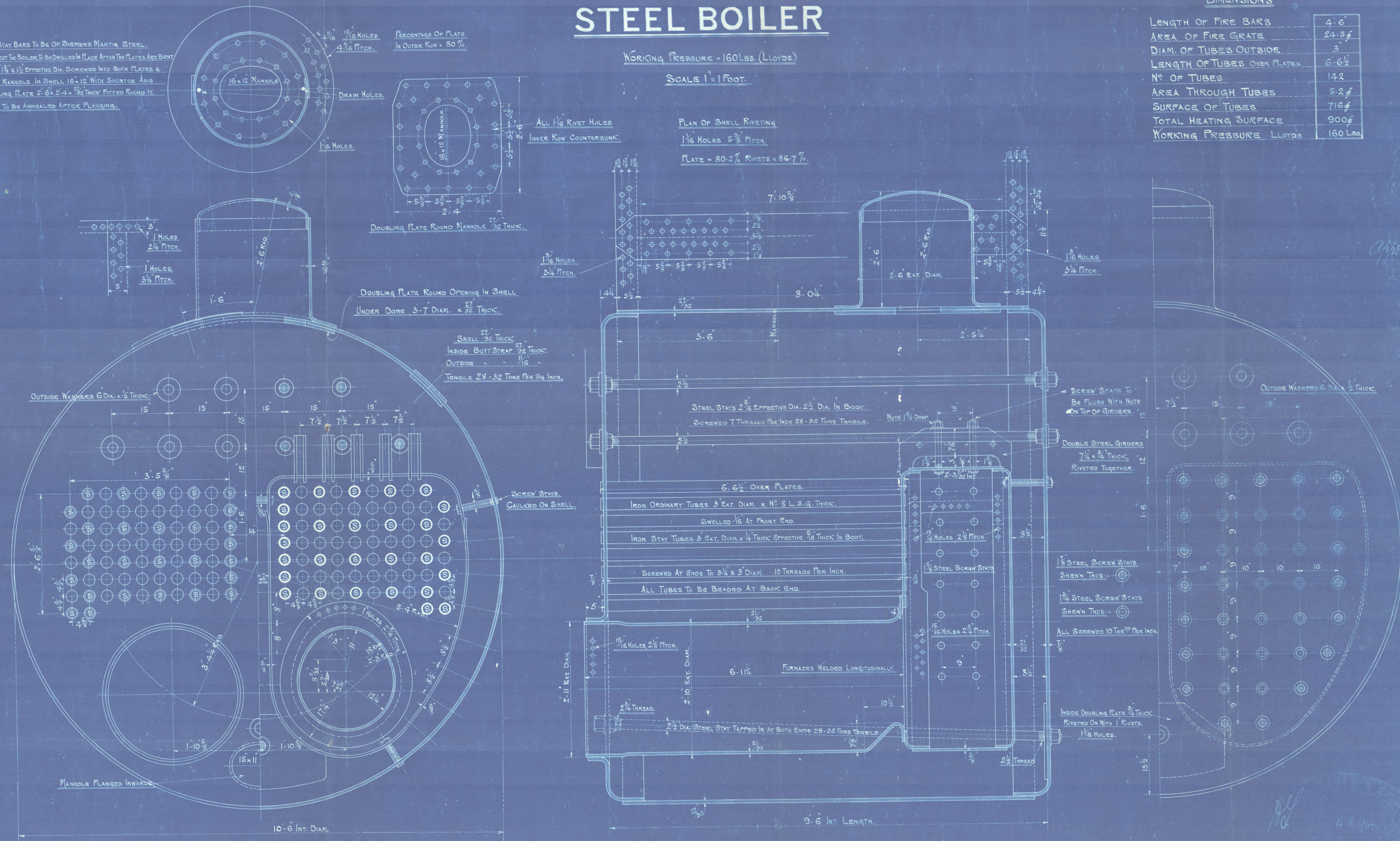
WORKING PRESSURE = 160 LBS. (LLOYDS)

SCALE 1" = 1 FOOT.

DIMENSIONS

LENGTH OF FIRE BARS	4'-6"
AREA OF FIRE GRATE	24.5 sq
DIAM. OF TUBES OUTSIDE	3"
LENGTH OF TUBES OVER PLATES	6'-6 $\frac{1}{2}$ "
Nº OF TUBES	142
AREA THROUGH TUBES	5.2 sq
SURFACE OF TUBES	716 sq
TOTAL HEATING SURFACE	900 sq
WORKING PRESSURE LLOYDS	160 Lbs.

Approved by Lloyd's 25-2-1914



ENG. Nº

A 186

R

RETAIN

Charles Co. Ltd.

Boiler No A186

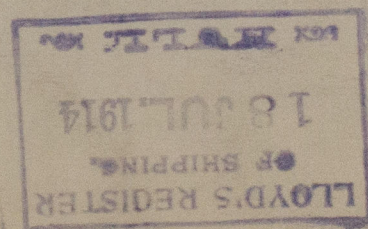
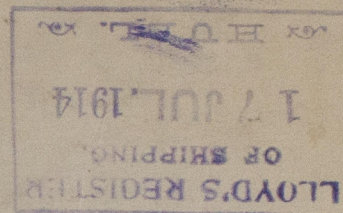
W.P. 160 lbs.

Dup. of A181 & 2.

s/s "Bob White"

Hull Rpt. No. 28436

W949-0134



© 2020

Lloyd's Register
Foundation