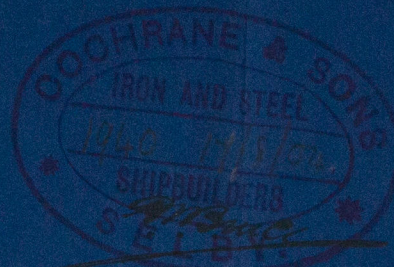




19.8.04



STEEL

# MIDSHIP SECTION

N<sup>o</sup> 331.

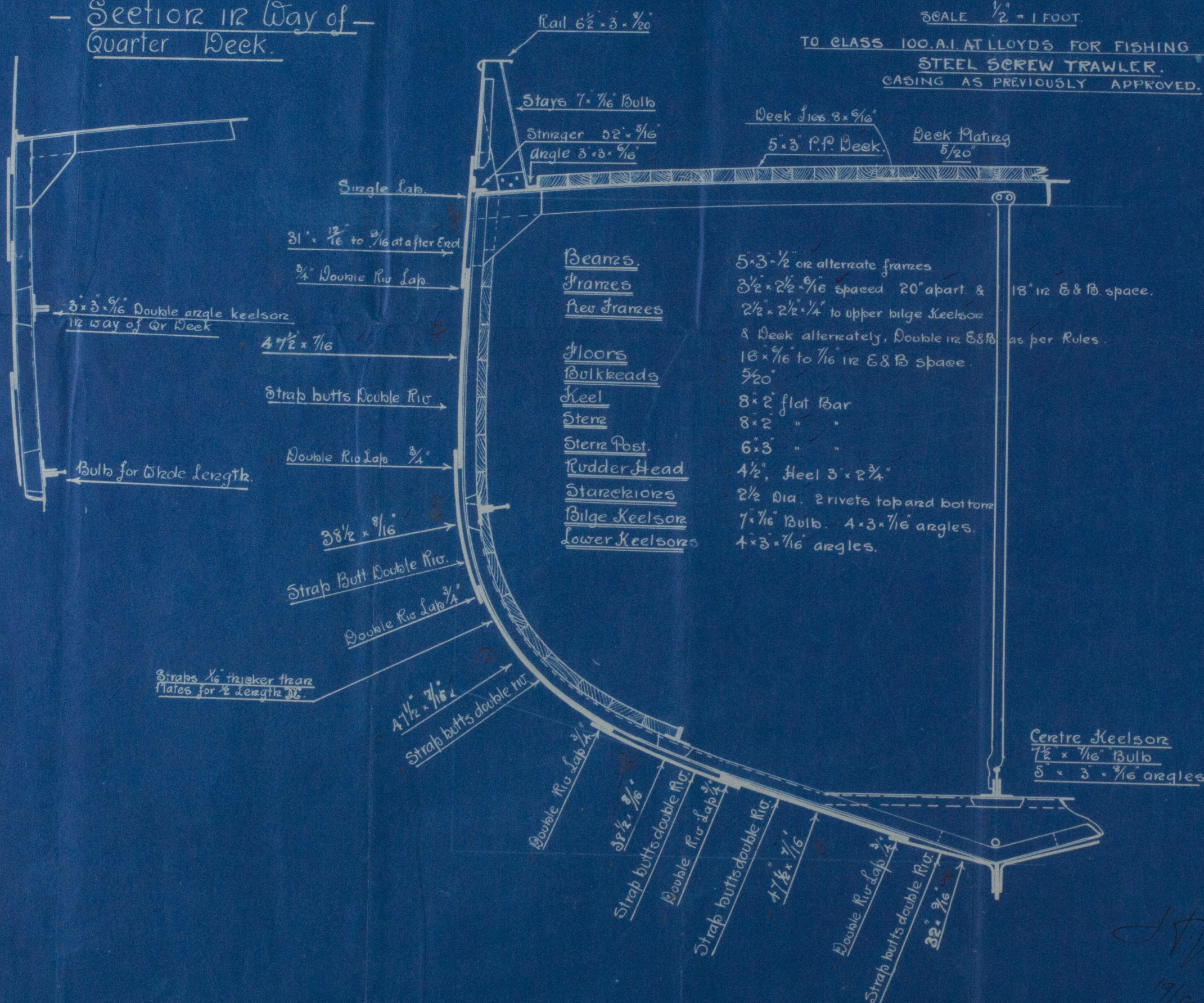
DIMENSIONS

LENGTH 132-0  
BREADTH 22-0  
DEPTH MLD 13-2

SCALE 1/2" = 1 FOOT.

TO CLASS 100.A.1 AT LLOYD'S FOR FISHING PURPOSES.  
STEEL SCREW TRAWLER.  
CASING AS PREVIOUSLY APPROVED.

Section 1/2 Way of Quarter Deck.

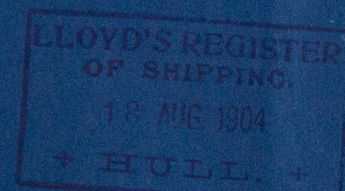


CLASS 100.A.1.  
Raised Quarter Deck 75-0 x 12  
Proportions -  
Breadth to length 5.9  
Depth to length 3.6

Dimensions -  
Length as per Rule 130.83  
1/2 mld Breadth 10.93  
Depth 13.62

Numbers -  
1/2 Girth 20.0  
1/2 mld Breadth 10.93  
Depth 13.62  
Length 44.55 1st 12"  
5828.4765 2nd 12"

EQUIPMENT -  
1st Bower 5x stock 5 3/4 cuts. 7-1-15 attached  
2nd " " " 5 1/4 " " 7-1-15 attached  
3rd " " " 3 " " 7-1-15 attached  
105 fathms 1/16 short link cable. Supplied 15  
60 " 6" Hawser  
60 " 5" Warp.



Cockrane & Sons  
Shipbuilders  
Glasgow

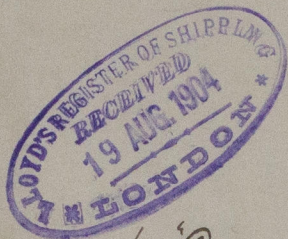




Midship Section

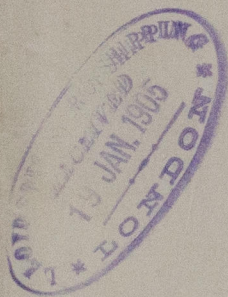
- Hull No. 331 -

Cochrane & Sons  
Selly



s/s 'Drax'

Hull Report No. 16548



© 2020

Lloyd's Register  
Foundation

W948-0113