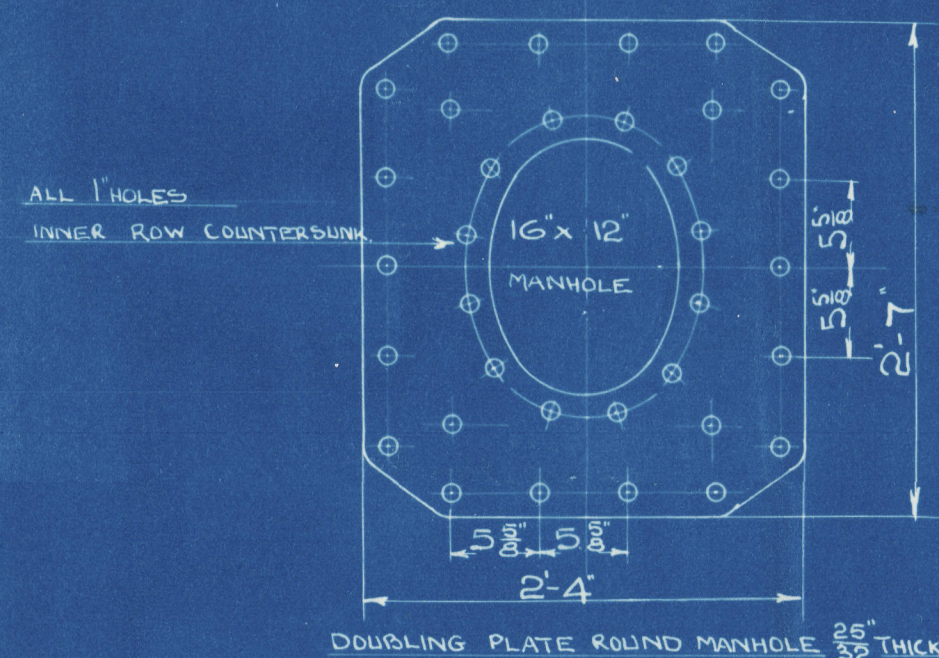


21/11/08  
LLOYD'S REGISTER  
LONDON

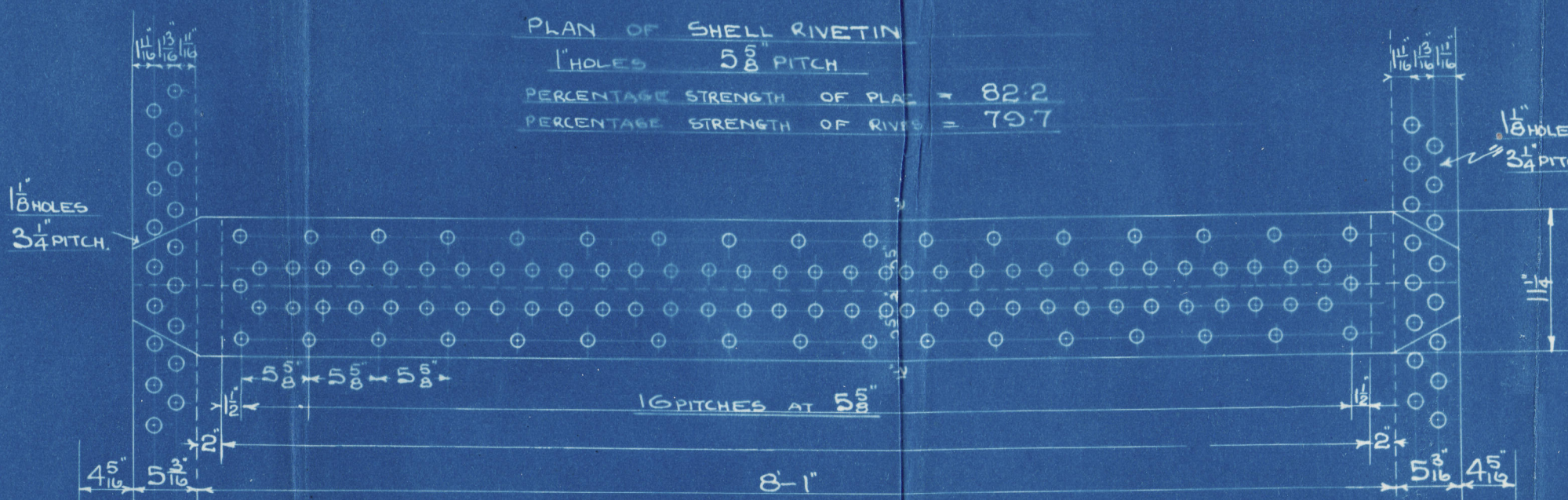
# STEEL BOILER N<sup>o</sup> A120

WORKING PRESSURE = 140 LBS. PER SQ. IN. LLOYD'S.  
TEST PRESSURE = 280 LBS. PER SQ. IN.  
SCALE 1 INCH = 1 FOOT

NOTE. ALL PLATES STAYS AND RIVETS TO BE OF SIEMENS  
MARTIN STEEL THE SHELL PLATES AND BUTT STRAPS ARE TO BE  
NOT LESS THAN 28 TONS PER SQ. IN. TENSILE. ALL RIVET  
HOLES TO BE DRILLED IN PLACE AFTER THE PLATES ARE  
BENT. ALL FLANGED PLATES TO BE ANNEALED AFTER FLANGING  
THE SCREW STAYS ARE  $1\frac{1}{2}$  &  $1\frac{3}{8}$  EFF. DIA. SCREWED INTO  
BOTH PLATES AND NUTTED AT EACH END. SCREWED 10 THS  
PER INCH. THE TUBES ARE OF IRON. THE ORDINARY TUBES ARE  
 $3\frac{1}{4}$  EXT DIA. X 9 LSG. THICK. SWELLED 16 AT FRONT END  
THE STAY TUBES ARE  $3\frac{1}{4}$  EXT DIA. X  $\frac{1}{4}$  THICK IN BODY.  $\frac{3}{16}$  EFF  
THICKNESS. SCREWED AT ENDS TO  $3\frac{1}{2}$  &  $3\frac{3}{4}$  DIA. 10 THS  
PER INCH. AND NUTTED AT FRONT END WHERE SHOWN  
A MANHOLE IN SHELL  $16 \times 12$  WITH SHORTER AXIS LONGITUDINALLY  
AND A DOUBLING PLATE  $2 \times 4 \times 2 \times 7 \times \frac{5}{16}$  THICK FITTED ROUND IT.

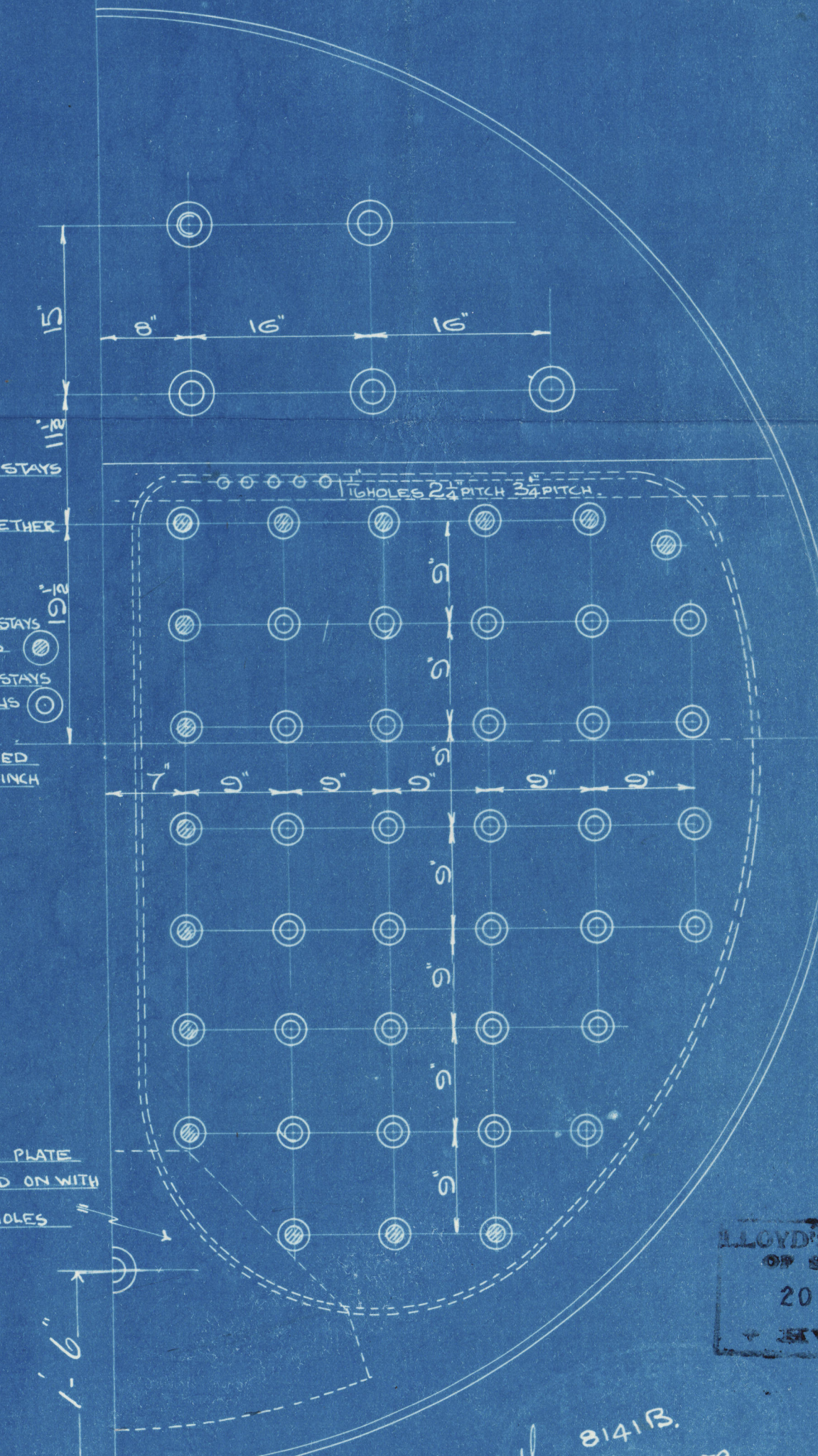
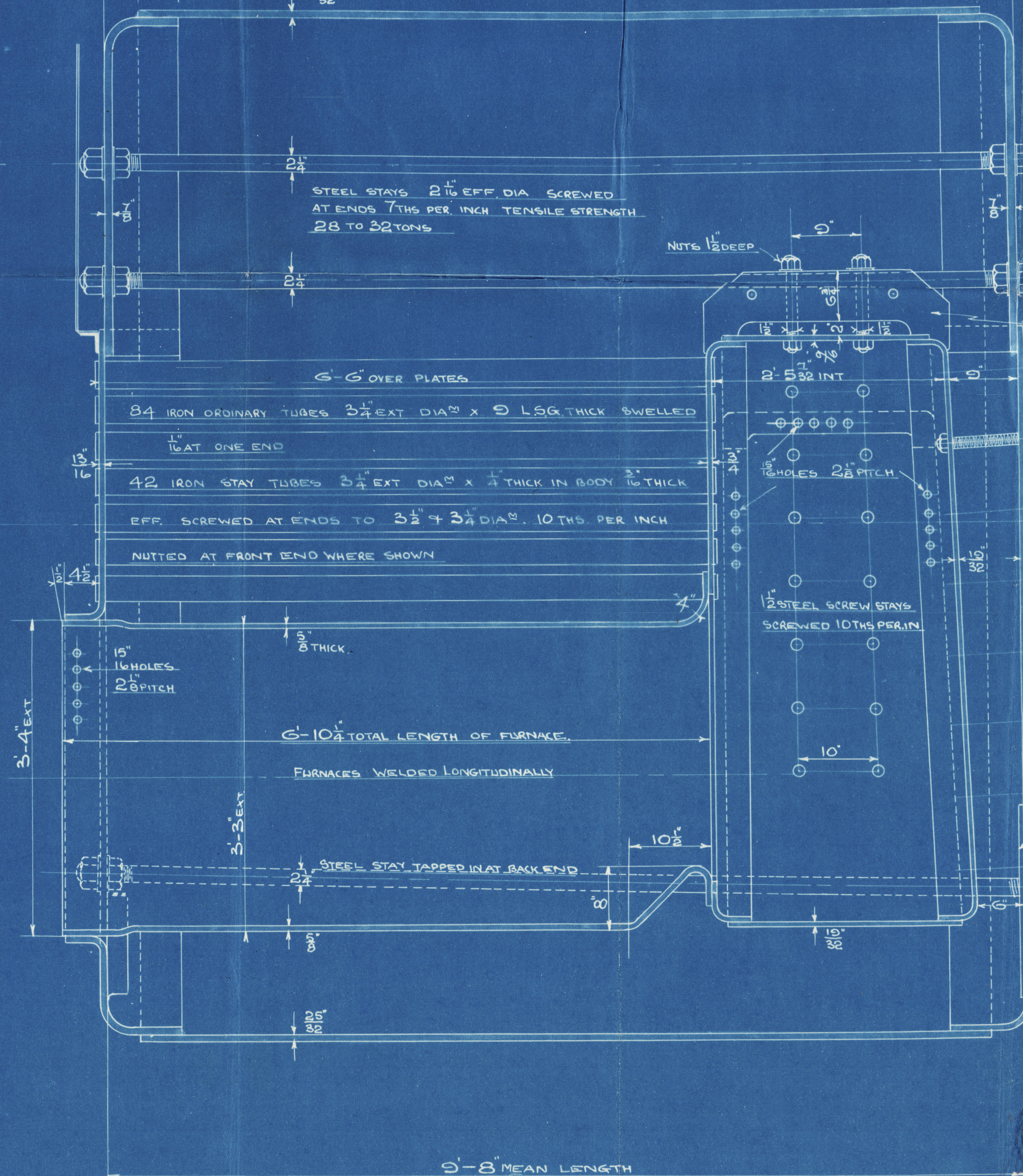
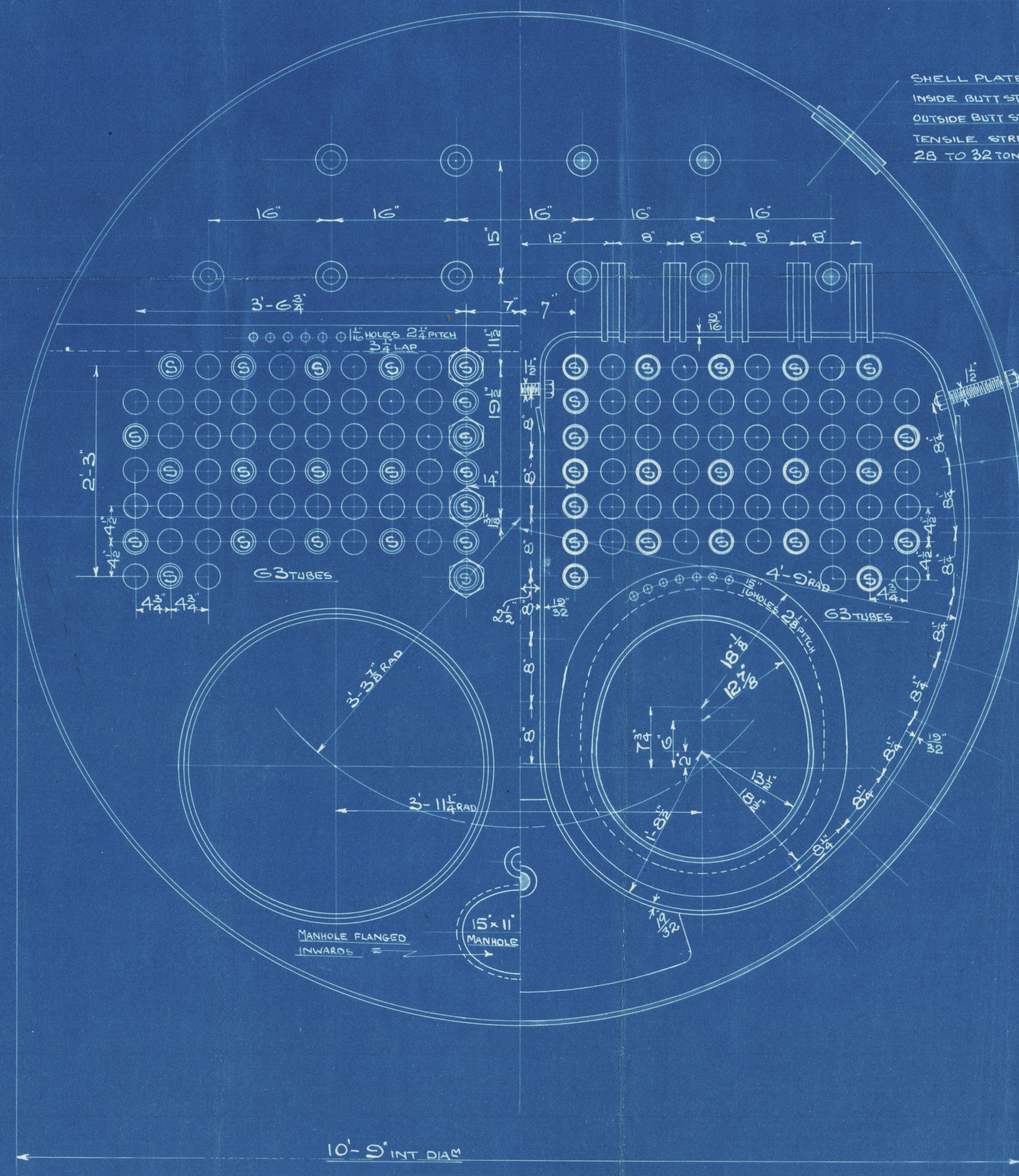


PLAN OF SHELL RIVETING  
HOLES  $5\frac{1}{8}$  PITCH  
PERCENTAGE STRENGTH OF PLATE = 82.2  
PERCENTAGE STRENGTH OF RIVETS = 79.7



## DIMENSIONS

	BOILER.
LENGTH OF FIRE BARS	3'
AREA OF FIRE GRATE	6'-6"
DIAM OF TUBES OUTSIDE	126
LENGTH OF TUBES OVER PLATES	5.7'
N <sup>o</sup> OF TUBES	685
AREA THROUGH TUBES	875
SURFACE OF TUBES	140 LBS.
TOTAL HEATING SURFACE	
WORKING PRESSURE	



LLOYD'S REGISTER  
OF SHIPPING  
20 NOV. 1908

18146 B  
18-11-08

N<sup>o</sup> A120

Lloyd's Register  
Foundation

W947-0007



Lloyd



© 2020

Lloyd's Register  
Foundation

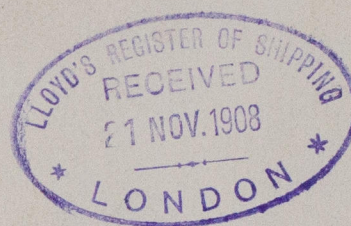


Boiler No A120.

Messrs Earles & Co

Se. K. Diplomat.  
Hull Report No. 20967

No 1686  
Lloyds Test  
280 lbs  
J.B.  
22. 1. 09



RETAIN



© 2020

Lloyd's Register  
Foundation