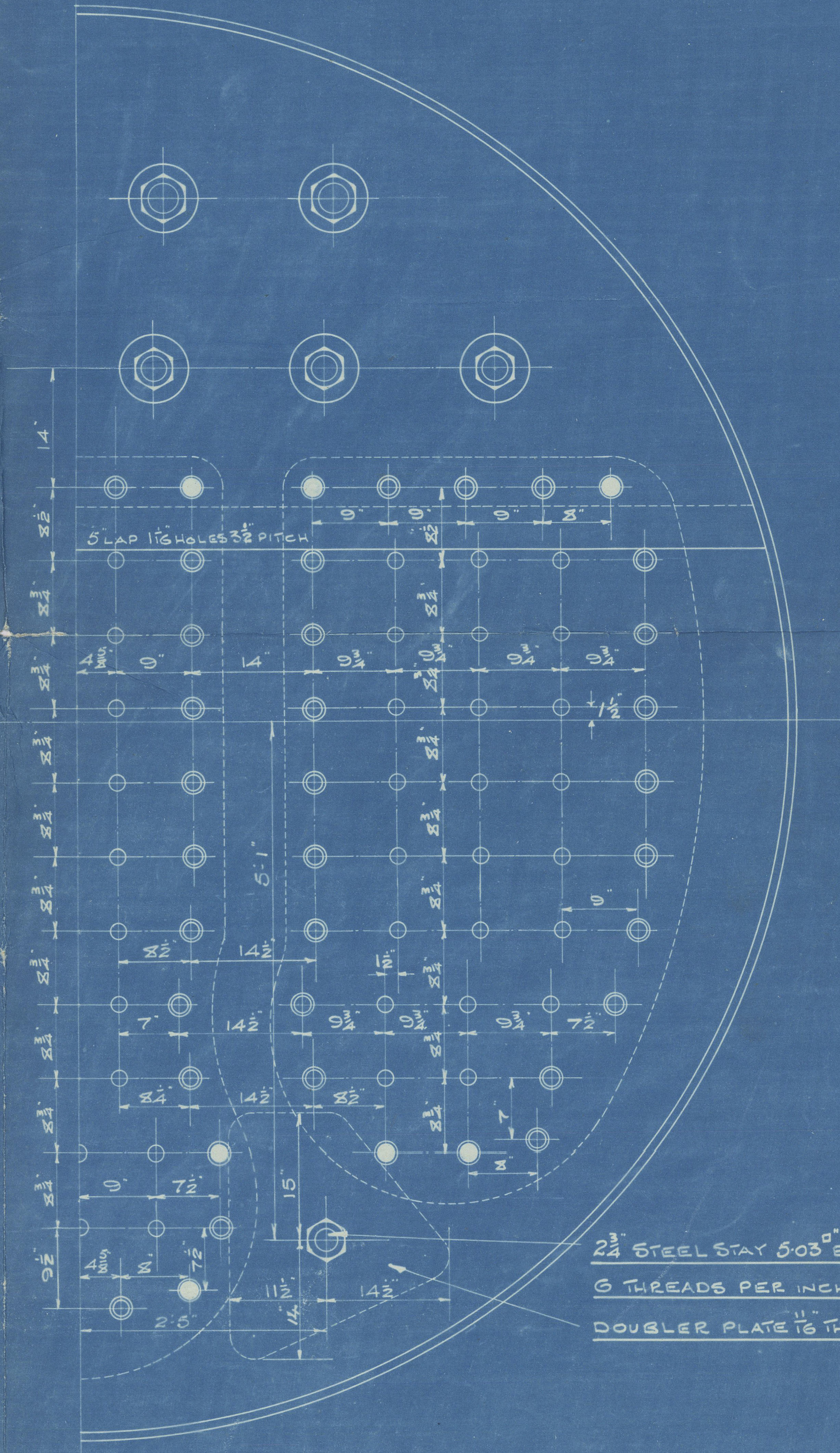
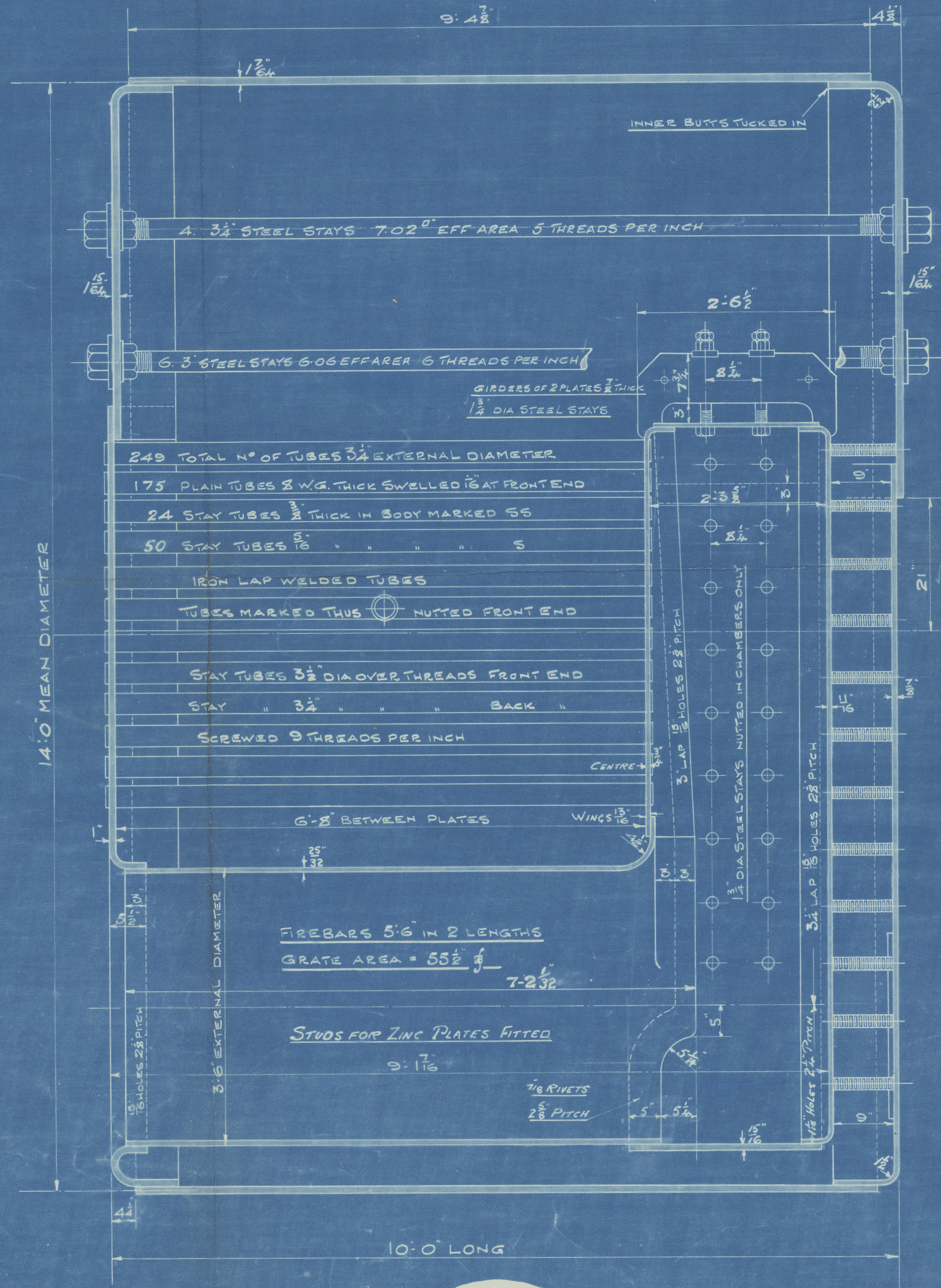
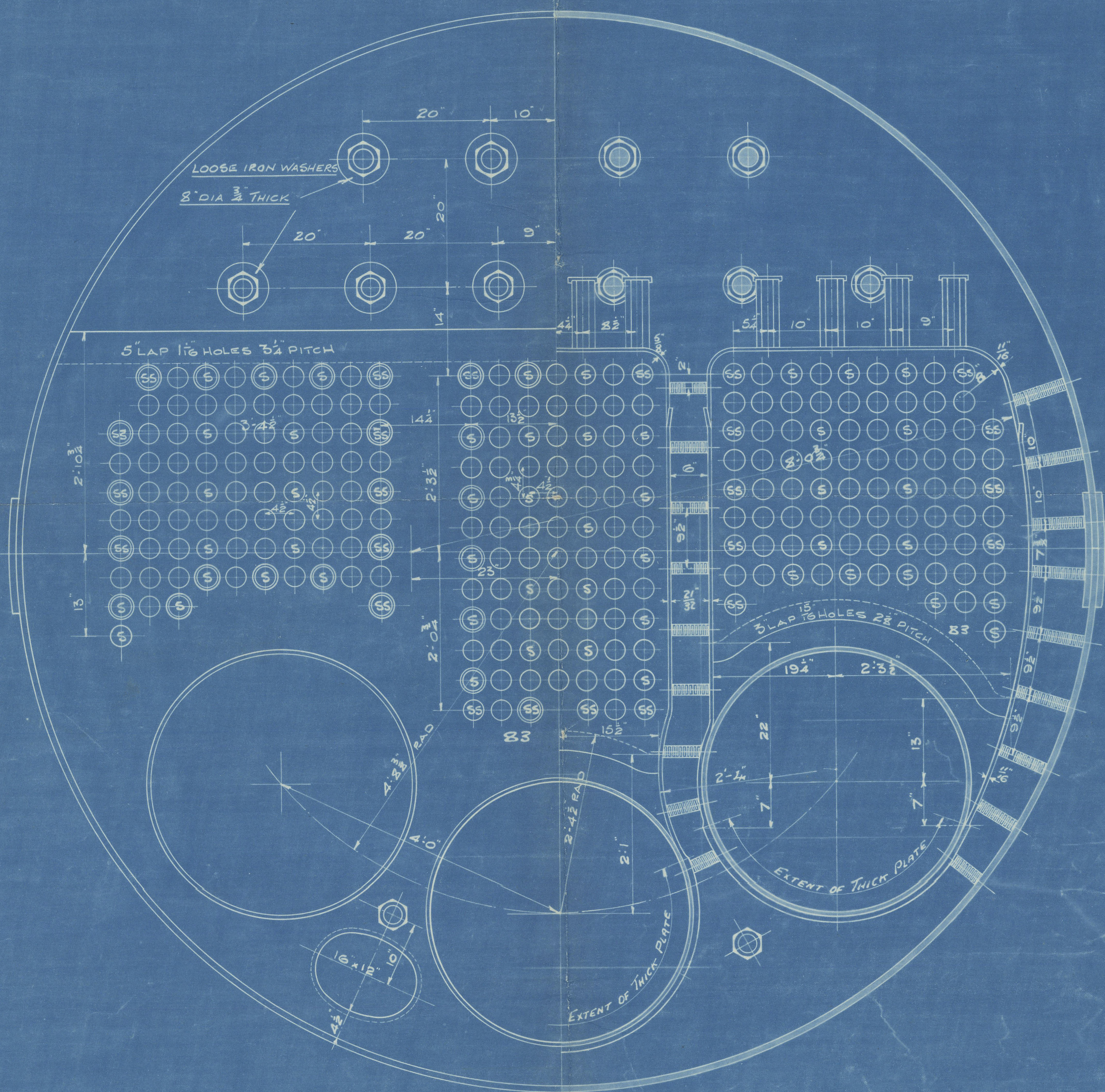
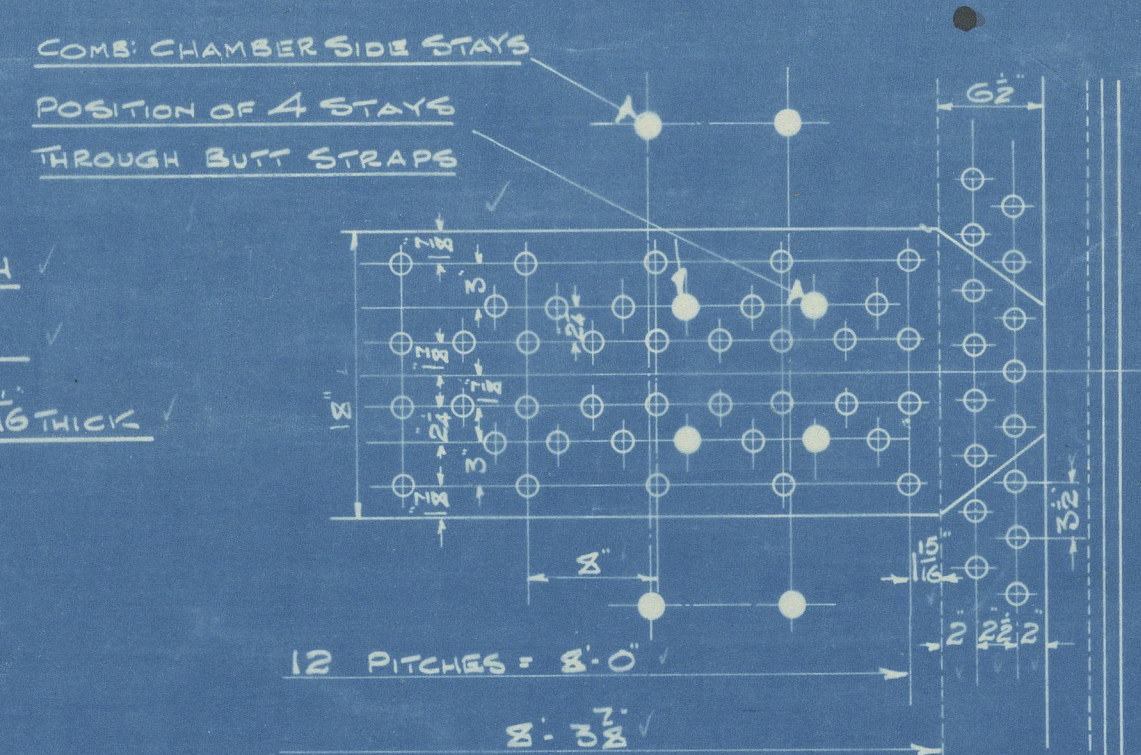


MANHOLE RING  
1 1/2" THICK 1 1/8" RIVETS

HEATING SURFACE	
TUBES	1409
FURNACES	114
CHAMBERS	210
FRONT TUBE PLATE	32
TOTAL FOR ONE BOILER	1765

LONGITUDINAL SEAMS 1 1/8" HOLES 1 1/2" RIVETS 8" PITCH  
CIRCULAR SEAMS 1 1/2" " 1 1/8" " 32"  
OUTER BUTT STRAPS 1 1/8" THICK INNER BUTT STRAPS 1 1/8" THICK



TO PASS LLOYD'S SURVEY FOR 120 LBS WORKING PRESSURE	
TENSILE STRENGTH OF SHELLS, BUTTS, & MANHOLE RING	29 TO 33 TONS
" " " OF ALL OTHER PLATES & SCREW STAYS	26 TO 30 TONS
" " " LONGITUDINAL STAYS	28 TO 32 TONS
" " " GIRDER PLATES	26 TO 30 TONS

# ONE BOILER LLOYD'S **BOILER N° M 2243**

FOR MESSRS J. MEYERS & CO. S.S. 4/7.

SCALE 1" = 1 FOOT



*Handwritten signature and date: 22.1.15*

- STAYS IN CHAMBER BACKS
- 1 1/2" STEEL STAYS 2'03" EFF AREA NUTTED IN CHAMBERS ONLY
- 1 1/2" STEEL " 2'36" EFF AREA " BOTH ENDS
- 2" STEEL " 2'71" EFF AREA " " "
- ALL SCREW STAYS 9 THREADS PER INCH
- WASHERS FITTED TO SCREW STAYS ONLY WHERE NECESSARY

DRAWN BY E.S.  
CHECKED BY [Signature]  
PASSED BY [Signature]  
DRAWING N° 6931



Richardsons, Westgarth & Co. Ld.

Main Boiler

Nº M 2243

for

J. Meyer's S. B. Co.

Zalt-Bommel

Holland.

SS Nº 417

180 lbs W. P.



No. 5541
LLOYD'S TEST
360 lbs.
29.7.15 - W.M.

J. Dartmell.  
Rpt. 9247.  
Ans 6764



© 2020

Lloyd's Register  
Foundation  
W946-0081