

22.8.05
LLOYD'S REGISTER OF SHIPPING
HULL

STEEL BOILERS N° 512.13.&14.

1. Boiler for each ship.

Working Pressure = 180 lbs. (Lloyds)

Scale 1 Inch = 1 Foot.

Plan of Shell Riveting
1/16 holes 7/8 pitch
Plate = 85% Ribs = 87% (Lloyds)

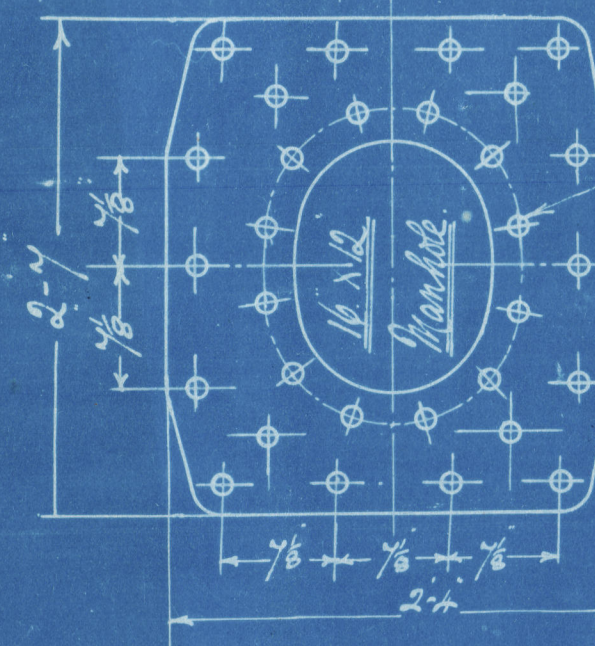
DIMENSIONS

LENGTH OF FIRE BARS	5'-6"
AREA OF FIRE GRATE	35.52 sq. ft.
DIAM. OF TUBES OUTSIDE	3 1/2"
LENGTH OF TUBES - 4th plates	6'-6 1/2"
N° OF TUBES	182
AREA THROUGH TUBES	9.25 sq. ft.
SURFACE OF TUBES	1095 sq. ft.
TOTAL HEATING SURFACE	1370 sq. ft.
WORKING PRESSURE	180 lbs.

Note:

All plates, stays & rivets to be of Siemens Martin Steel
All rivet holes throughout the boiler to be drilled in plate after the plates are bent. All flange plates to be annealed after flanging. The screw stays are 1 1/2", 1 3/8" & 1 1/2" effective diam. screwed into both plates and nutted at each end. Screwed 10 threads per inch. The tubes are of iron the ordinary tubes are 3 1/2" ext. diam. x 1/8" s.g. thick. The stay tubes are 2 1/2" int. diam. x 5/16" thick effective, screwed at ends to 3 1/2" x 3 1/2" diam. 10 threads per inch. A manhole in shell 16" x 12" with shorter axis longitudinally and a doubling plate 2'-7" x 2'-4" x 1/2" thick fitted round it.

Doubling plate round manhole
1/2" thick.



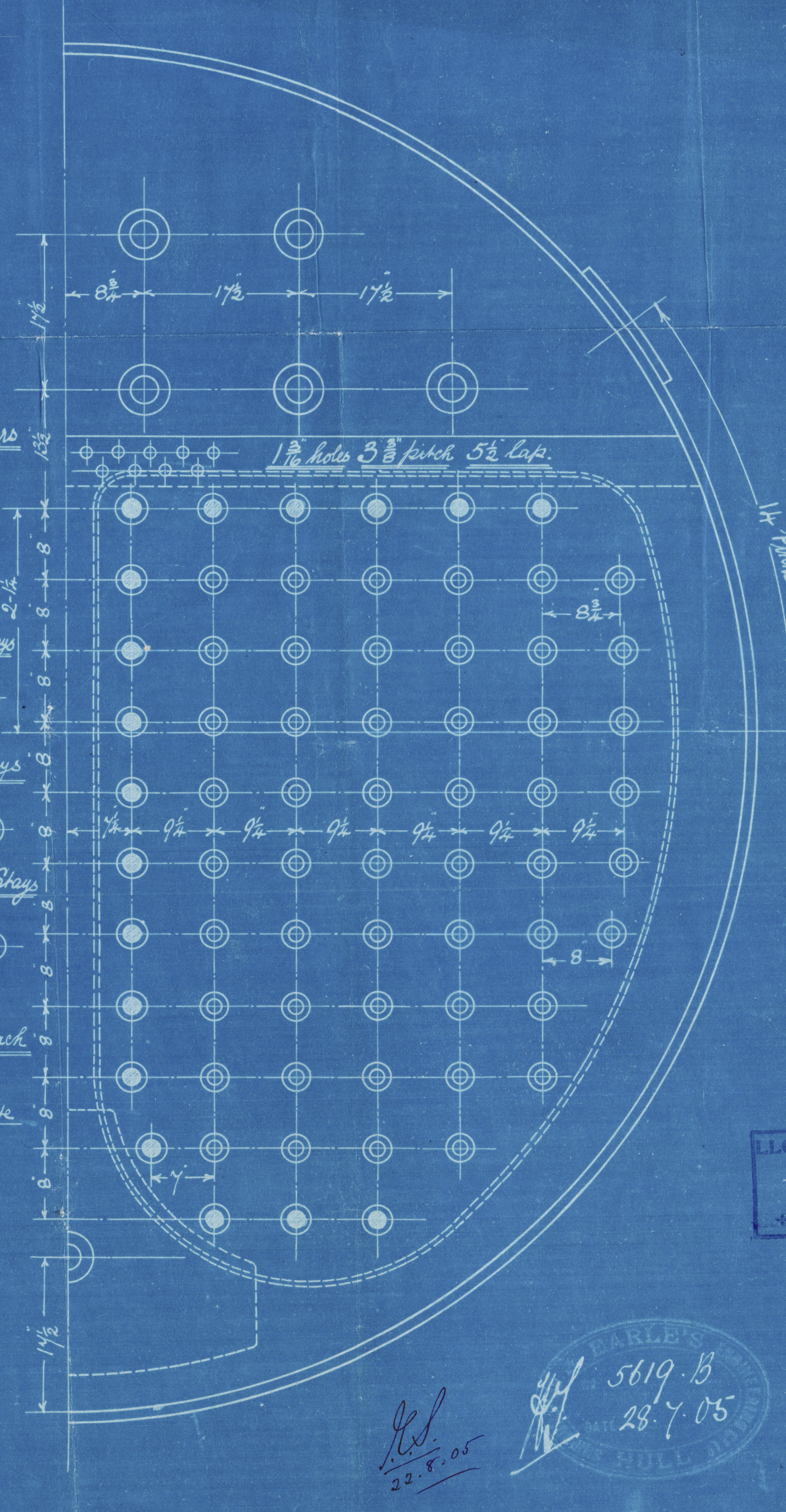
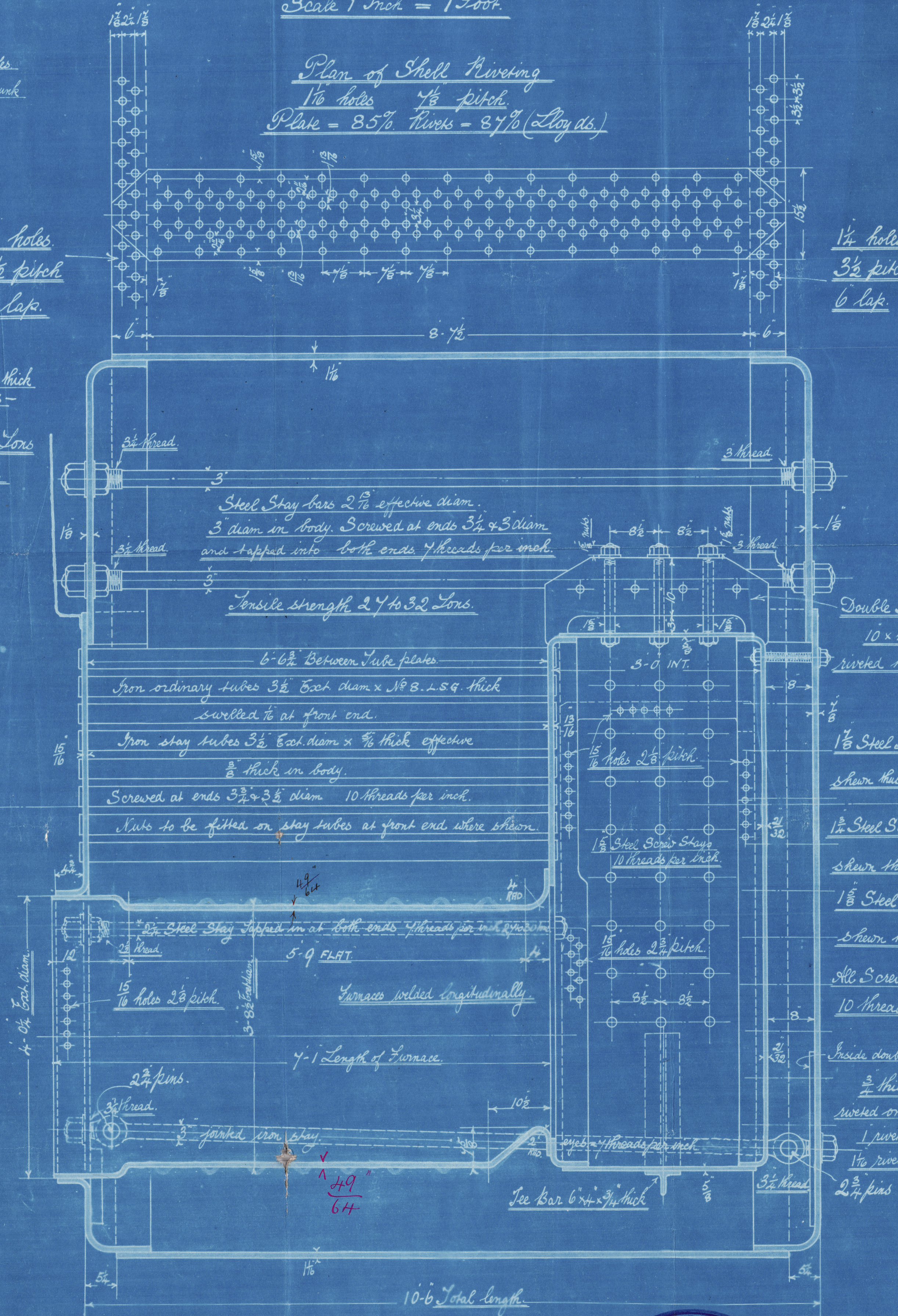
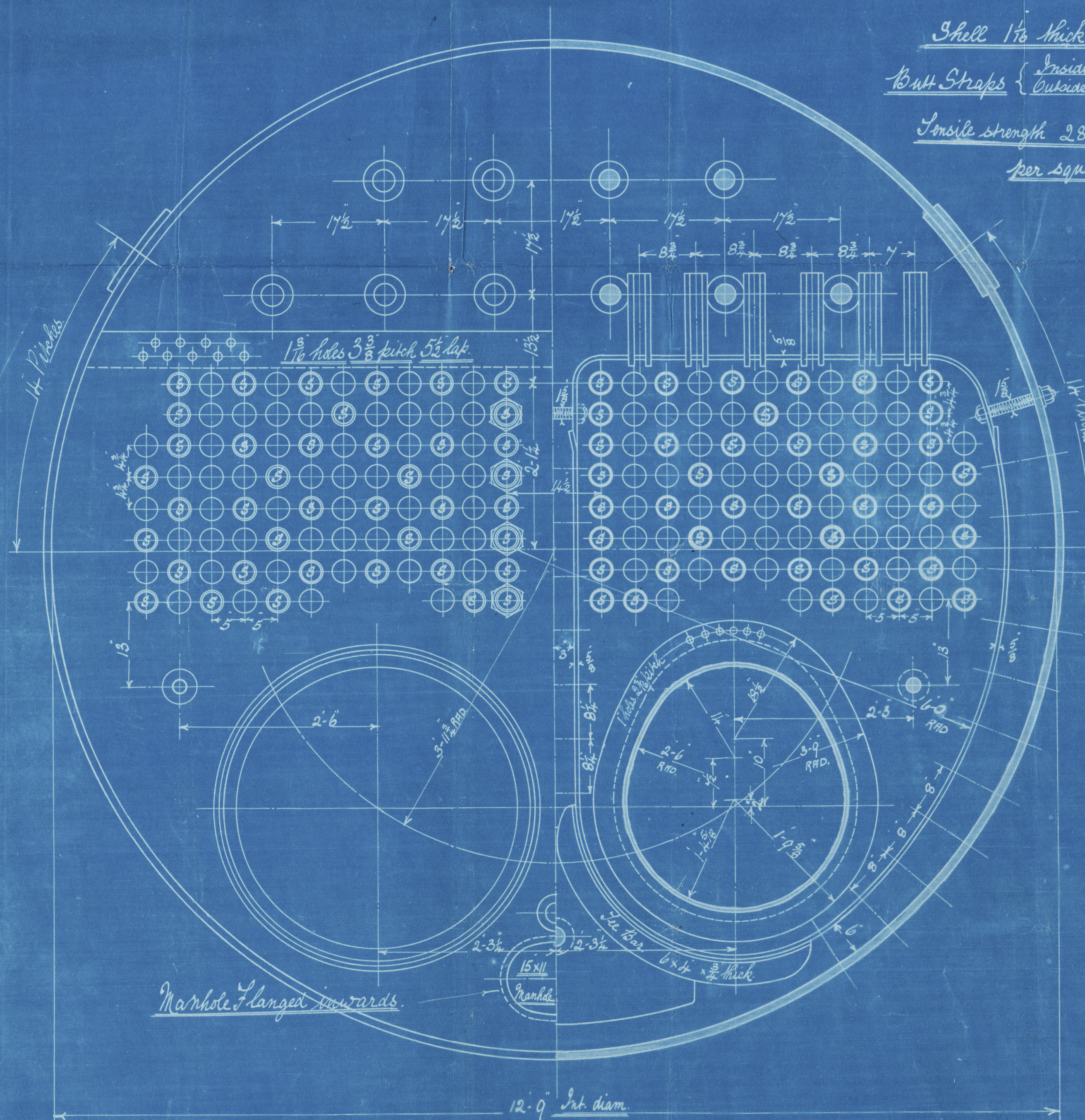
All 1/16 rivet holes
inner row countersunk
& flush riveted

1/4 holes
3 1/2 pitch
6 lap.

Shell 1/2" thick

Butt Straps { Inside 15 1/2" x 1/2" thick
Outside 15 1/2" x 7/8"

Inside strength 28 to 32 Tons
per square inch.



LLOYDS



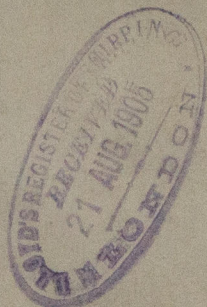
N° 512.13.14.

2020
Lloyd's Register
Foundation

Earle's S & E. Co. Lr.

Blis. No. 512/3/4

180th



s/s "Crown"

Hull Report No. 17558

s/s "Thrush"

Hull Report No. 17571

Lloyd's

RETAIL



© 2020

Lloyd's Register
Foundation

W943-0102