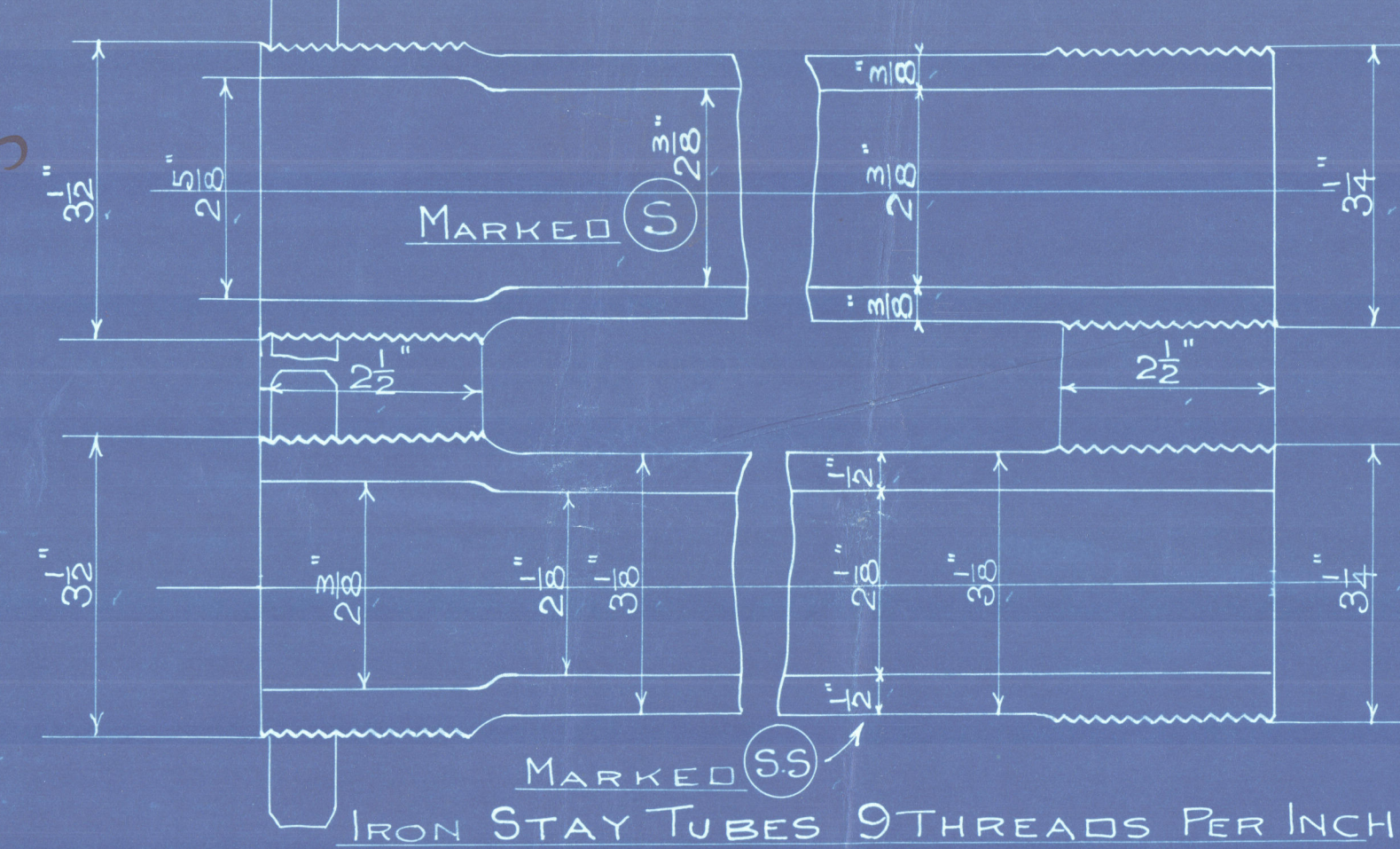


6844
 JMK 3.6.02
 BRC 5.6.02

17.6.02
 LONDON

HEATING SURFACE	
146 TUBES 3/4" EXT DIA x 6'-0" LONG	745
3 FURNACES 4 1/2" MEAN DIA x 6'-0" LONG	106.5
TOP & SIDES OF FIREBOXES	83.0
BACKS " "	48.0
BACK TUBE PLATES	29.0
FRONT " "	23.0
TOTAL HEATING SURFACE	1034.5

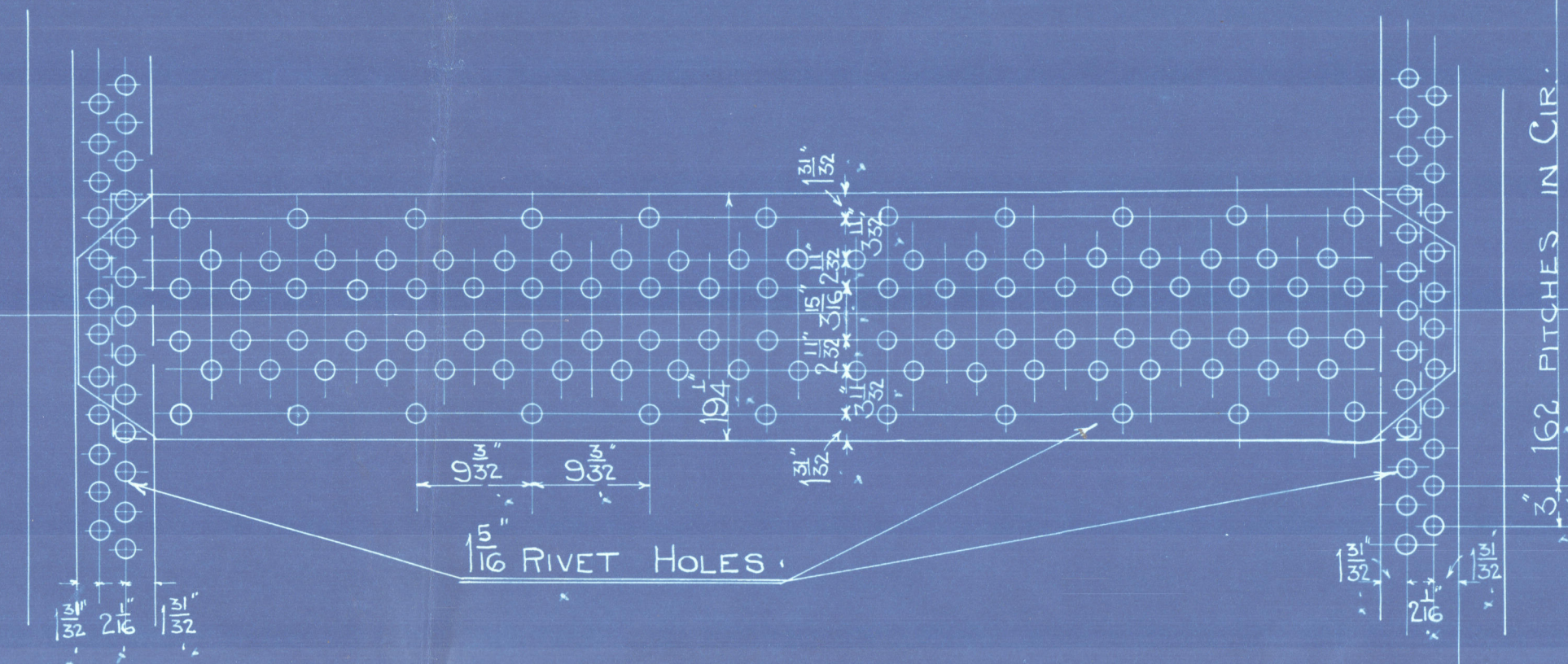
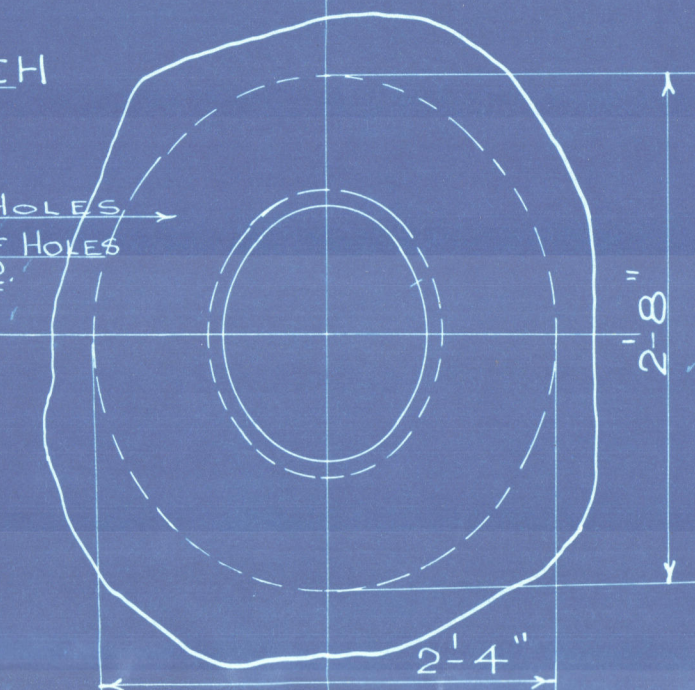
GRATE SURFACE	
3 FURNACES 3'-3" INT DIA x 4'-6" BAR = 43.875	
H.S. = 75.57	T.S. = 16
STEAM SPACE FROM 9" ABOVE FIREBOX	2.50
WEIGHT OF WATER (FRESH) 9"	15 TONS
DRAUGHT AREA THROUGH TUBES	6.5



NOTE - ALL STAY TUBES TO HAVE NUTS ON OUTSIDE OF FRONT TUBE PLATE.

1 1/2\"/>

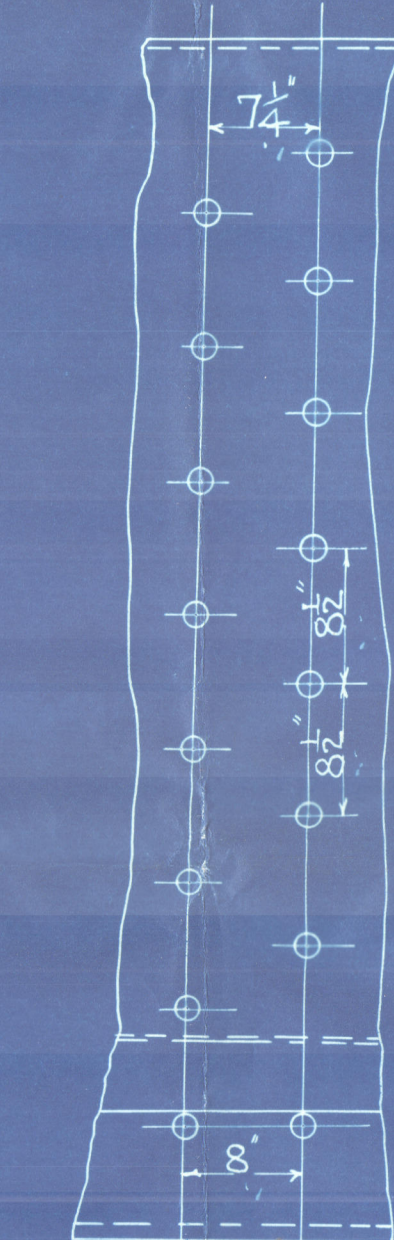
STEAM SPACE STAYS						
STAYS MARKED	⊗	3/4"	DIA	6TH	EFF AREA	= 7.239
"	"	3"	"	6	"	" = 6.096
"	"	2 1/2"	"	6	"	" = 5.051



LONGITUDINAL JOINT.
 PLATE 1/4\"/>

END CIRCUMFERENTIAL JOINT.
 PLATE 1/4\"/>

NOTE TENSILE STRENGTH OF SHELL PLATES 28 TO 32 TONS.
 " " " OTHER " 26 " 30 " " " " ALL RIVET HOLES DRILLED IN PLACE.



STAYS TO SHELL
 WING FIREBOXES

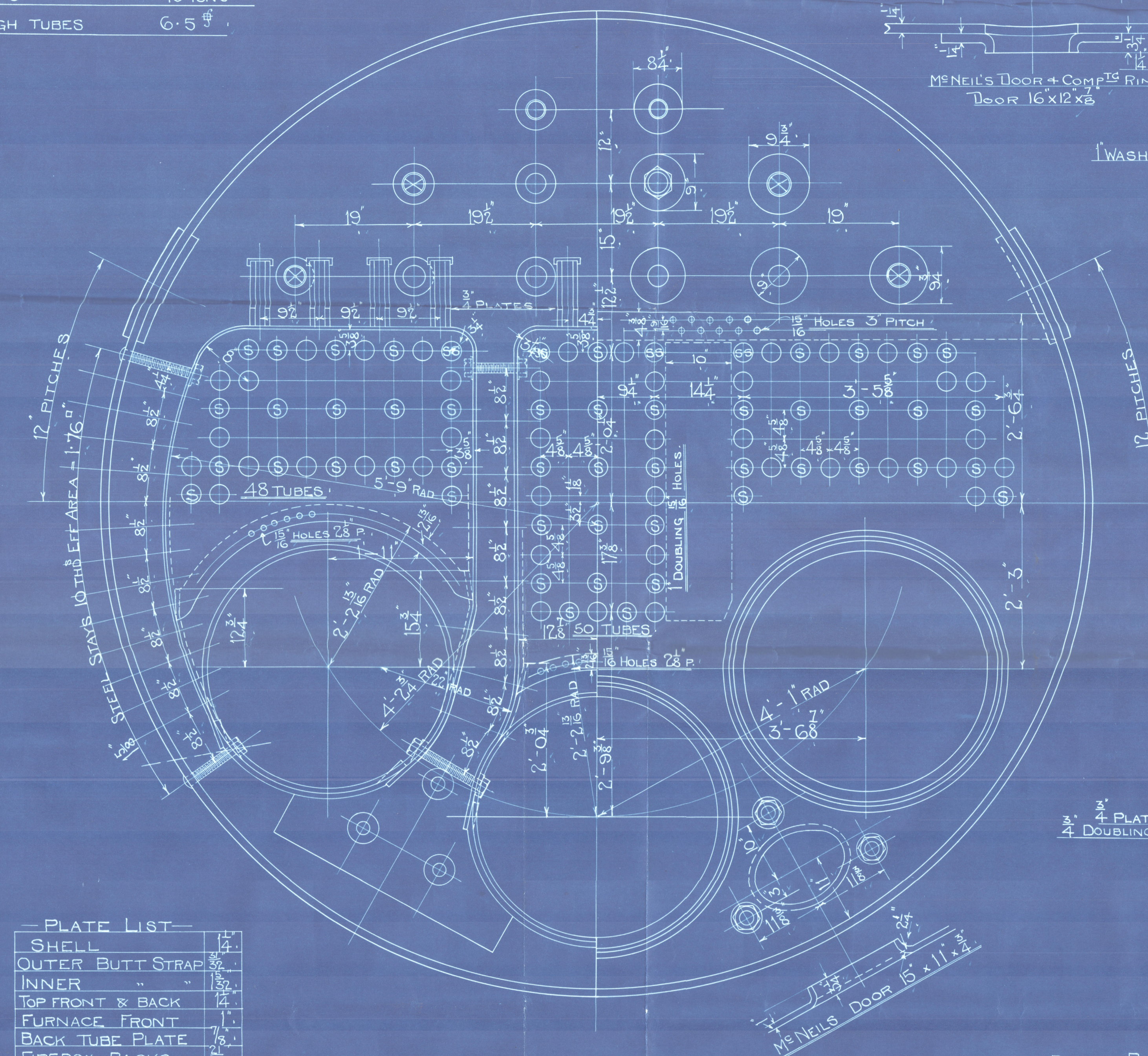
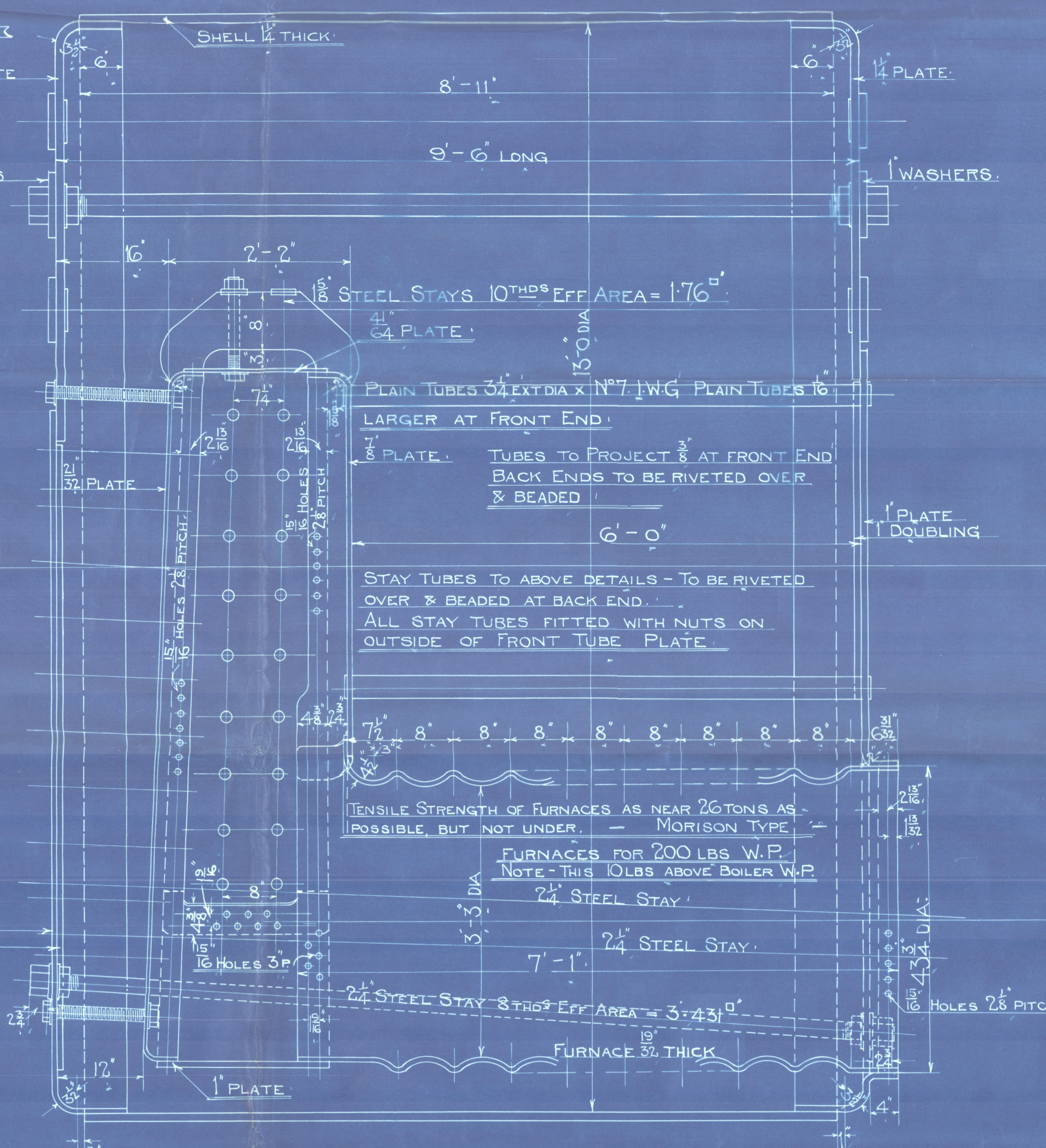
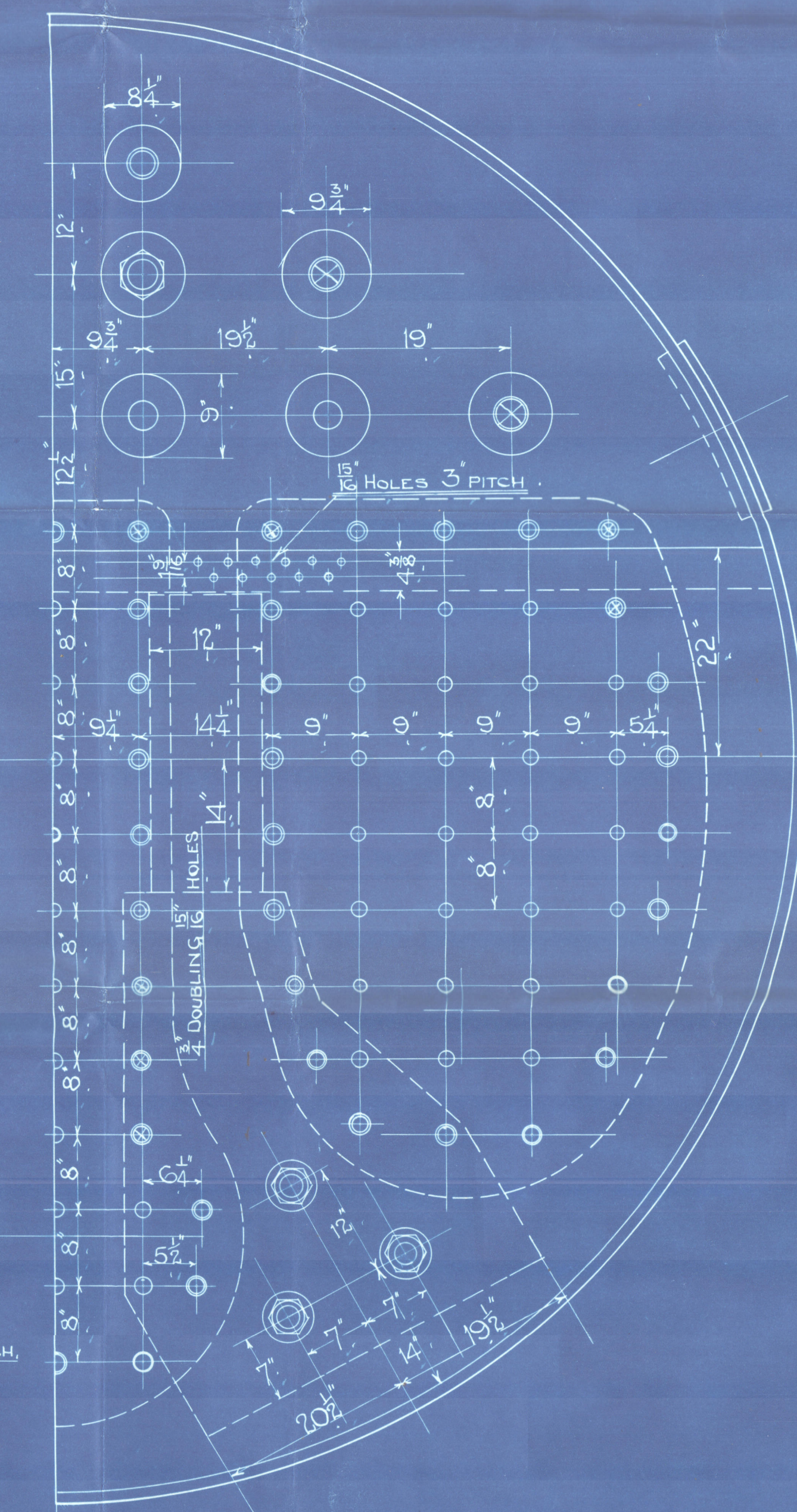


PLATE LIST	
SHELL	14
OUTER BUTT STRAP	14
INNER " "	14
TOP FRONT & BACK	14
FURNACE FRONT	14
BACK TUBE PLATE	14
FIREBOX BACKS	14
T & S OF FIREBOX	14
GIRDER PLATES	14
FIREBOX BOTTOMS	14
WASHERS	14
BOTTOM BACK	14
" " DOUBLING	14
FURNACE FRONT	14
FURNACES	14

4\"/>



NOTE - THE HOLES FOR RIVETS EXPOSED TO THE ACTION OF FLAME & WATER TO BE COUNTERSUNK & RIVETS FLUSH RIVETED ON THE WATER SIDE.



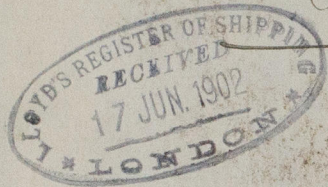
FIREBOX STAYS.
 STAYS MARKED ⑧ 2\"/>

AUXILIARY BOILER No 199-0

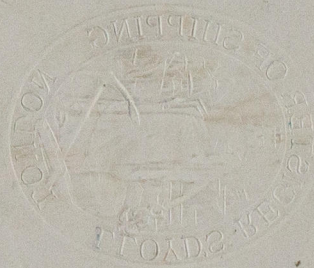
13'-0\"/>

SCALE - 1\"/>

Belfast N^o 5593
Workman-Clark & Co. L.R.S. 199
Superior Bailers
P. S. Dunsellor



RETA



w941-0239



© 2020

Lloyd's Register
Foundation