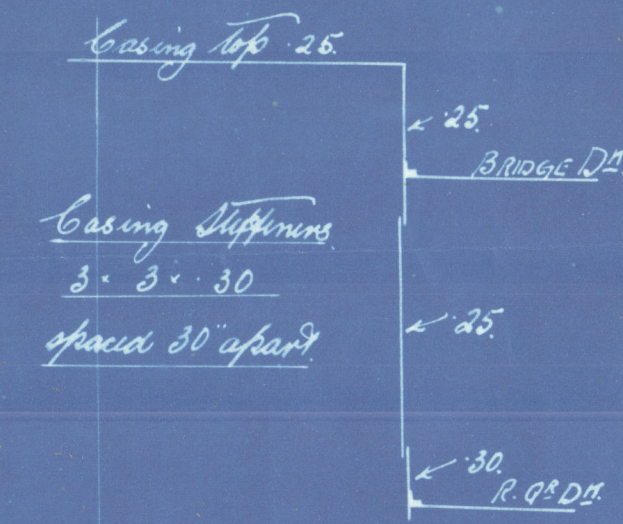


14.8.14
10.9.14

SECTION OF CASING.



PROPOSED LONGITUDINAL ELEVATION

OF A STEEL SCREW STEAMER.

TO CLASS 100.A.1. AT LLOYDS.

SCALE 1/8" = 1 FOOT.

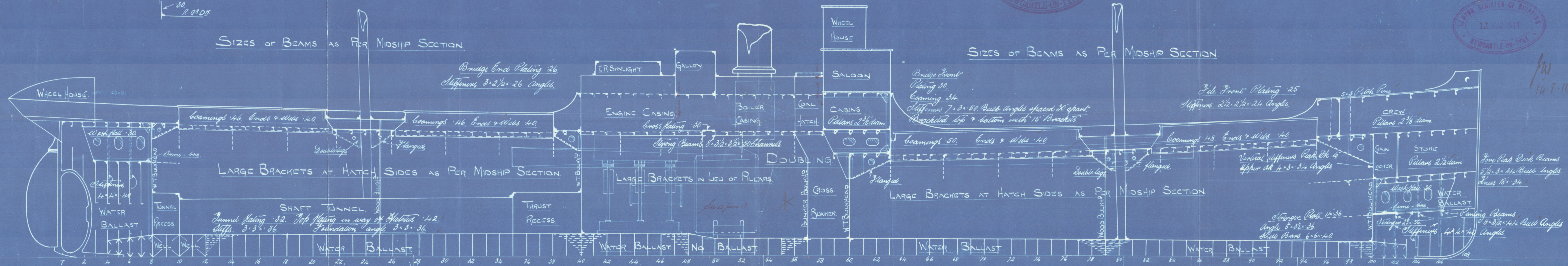
WOOD, SKINNER & CO. LTD.
SHIPBUILDERS
NEWCASTLE-ON-TYNE.

PRINCIPAL DIMENSIONS
LENGTH B.P. 238'-0"
BREADTH M^{LD} 36'-0"
DEPTH M^{LD} 16'-4"



SIZES OF BEAMS AS PER MIDSHIP SECTION

SIZES OF BEAMS AS PER MIDSHIP SECTION



Reinforce three' shell & frames in After Peak spaced 5 1/2 diams. apart centre to centre.

Stiffening of W. Y. Bulkheads.																		
Collision Bulkhead		Plating 32 in	Frame 28 at Deck	Single angle to deck 3 1/2 x 3 1/2 x 32.	Single angle to outside plating & double bottom 4 1/2 x 4 1/2 x 4 1/2.	Vertical stiffeners 6 x 3 x 40 B. Y. spaced 24" apart	Brackets to deck with 15 x 3 1/2 B. Y. Brackets.	Double frame bottoms.	Reinforce three' shell & frames in Fore Peak spaced 5 1/2 diams. apart centre to centre.									
Nº 60	do.	do.	30	do.	3 1/2 x 3 1/2 x 30.	do.	4 1/2 x 4 1/2 x 4 1/2	do.	5 1/2 x 3 x 40 B. Y. do. 30 do. Brackets top & bottom with 15 x 30 Brackets 23' apart.									
Nº 40	do.	do.	32	do.	28 do.	do.	3 1/2 x 3 1/2 x 32.	do.	4 1/2 x 4 1/2 x 4 1/2 do. 7 x 3 x 40 B. Y. do. 30 do. do. 15 x 3 1/2 do.									
Nº 8	do.	do.	32	do.	30 do.	do.	3 1/2 x 3 1/2 x 32.	do.	4 1/2 x 4 1/2 x 4 1/2 do. 7 x 3 x 40 B. Y. do. 24" do. Brackets to deck with 15 x 3 1/2 Brackets.									

Nº 193 SHIP.

RETAIN

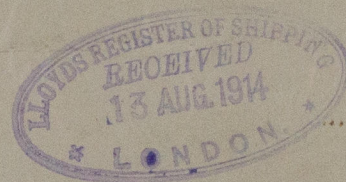
Wood Skinner & Co. Ltd.

No 193

Profile

S.S. "BOUCAU"

Woe Rpt No. 67622



Profile



© 2020

Lloyd's Register

Foundation