

6. 2:07  
20:2:07  
2/5/07

# STEEL BOILER N<sup>o</sup> 533

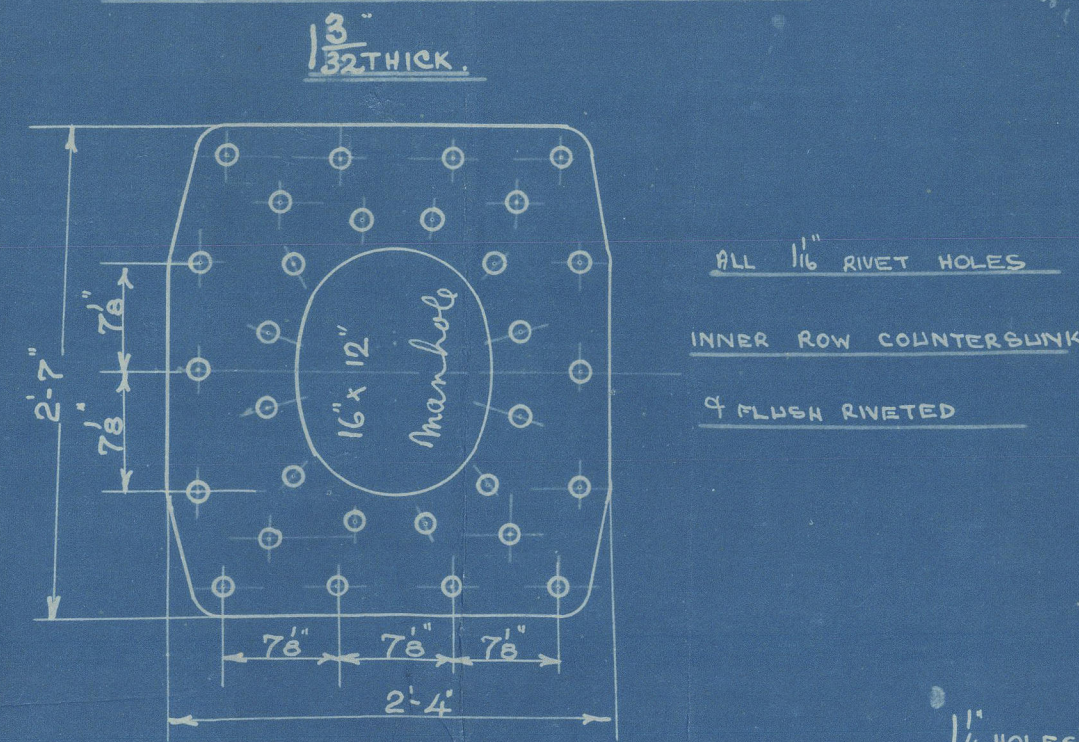
WORKING PRESSURE 180 LBS (LLOYDS)

SCALE INCH = 1 FOOT.

## NOTE :-

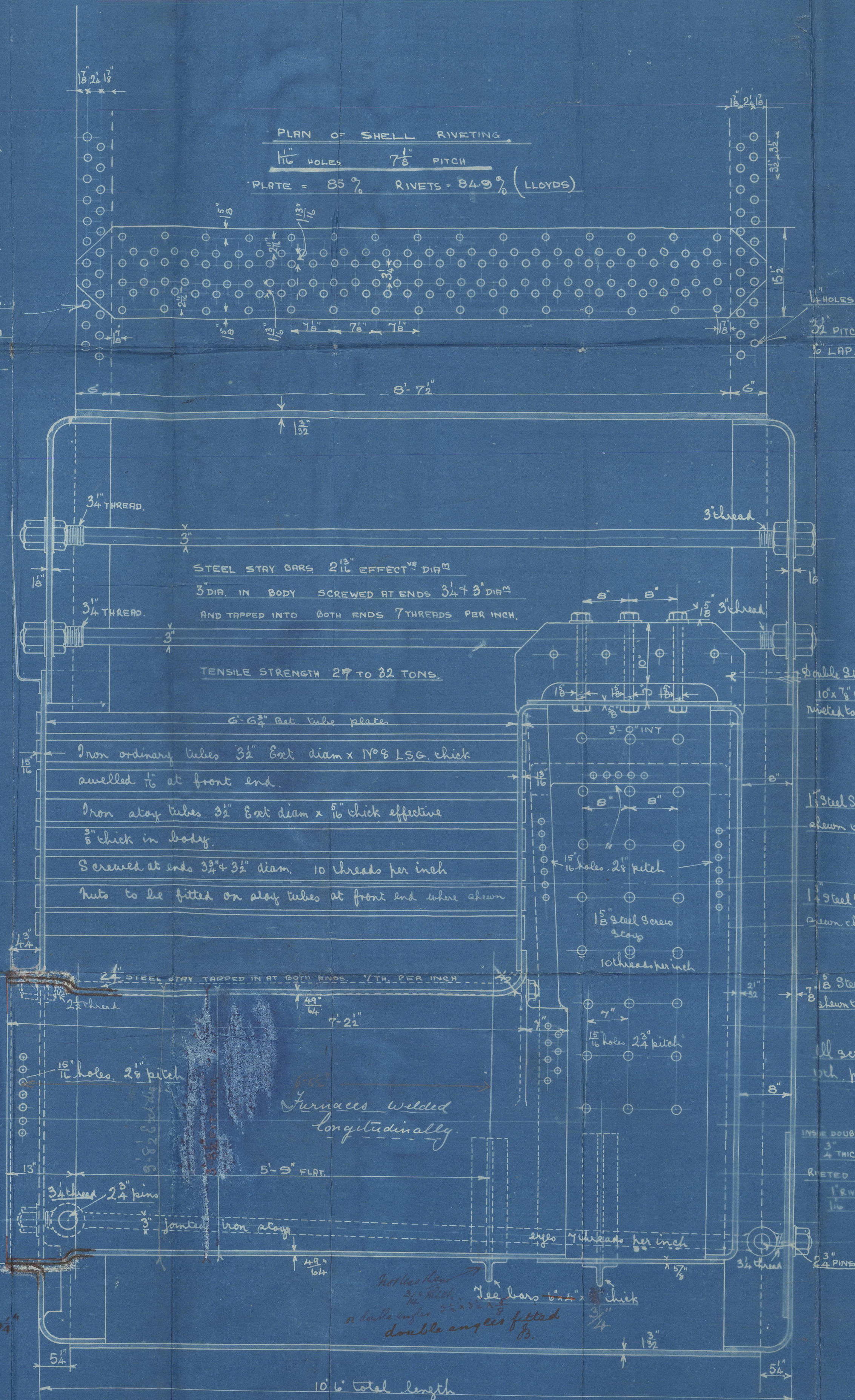
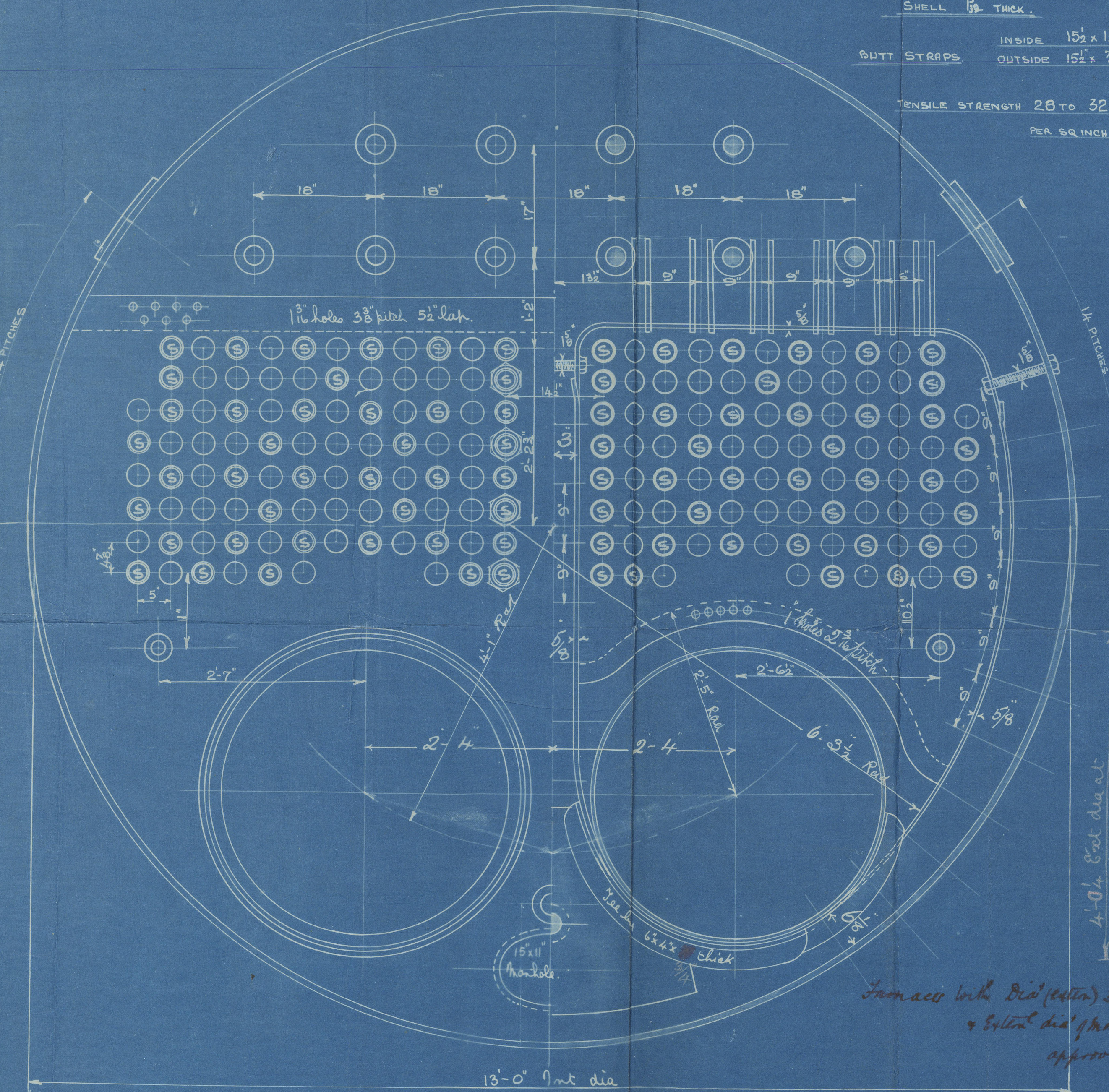
ALL PLATES STAYS & RIVETS TO BE OF SIEMENS MARTIN STEEL.  
ALL RIVET HOLES THROUGHOUT THE BOILER TO BE DRILLED IN PLACE AFTER THE PLATES ARE BENT. ALL FLANGED PLATES TO BE ANNEALED AFTER FLANGING. THE SCREW STAYS ARE  $1\frac{1}{2}$ ,  $1\frac{3}{8}$ , &  $1\frac{1}{2}$  EFFECTIVE DIA. SCREWED INTO BOTH PLATES AND NUTTED AT EACH END. SCREWED 10 THREADS PER INCH. THE TUBES ARE OF IRON THE ORDINARY TUBES ARE  $3\frac{1}{2}$  EXT DIA. & N<sup>o</sup> 8 LSG. THICK. THE STAY TUBES ARE  $2\frac{1}{4}$  INT DIA. &  $\frac{5}{16}$  THICK. EFFECTIVE SCREWED AT ENDS TO  $3\frac{1}{2}$  &  $3\frac{1}{2}$  DIA. 10 THREADS PER INCH. A MANHOLE IN SHELL  $16 \times 12$  WITH SHORTER AXIS LONGITUDINALLY AND A DOUBLING PLATE  $2'-7" \times 2'-4" \times \frac{3}{32}$  THICK FITTED ROUND IT.

## DOUBLING PLATE ROUND MANHOLE



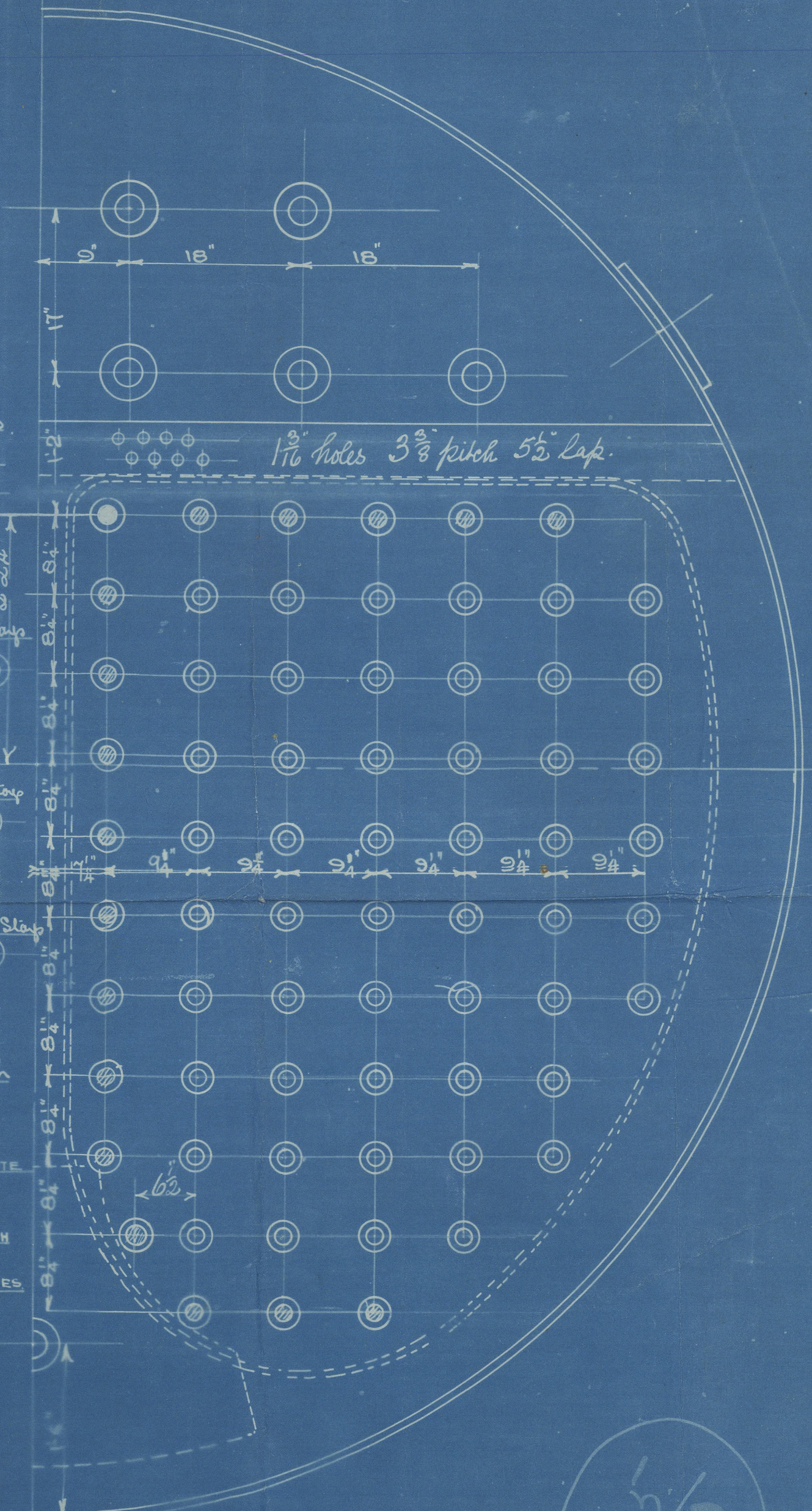
1 1/2 HOLES  
3/2 PITCH  
1/4 L.P.

SHELL  $\frac{3}{32}$  THICK.  
INSIDE  $15\frac{1}{2} \times 13\frac{1}{2}$  THICK  
GUTT STRAPS OUTSIDE  $15\frac{1}{2} \times \frac{7}{8}$   
TENSILE STRENGTH 28 TO 32 TONS PER SQ INCH.



## DIMENSIONS.

LENGTH OF FIRE BARS	5'-0"
AREA OF FIRE GRATE	35 sq ft
DIAM OF TUBES OUTSIDE	3 1/2"
LENGTH OF TUBES (bet plates)	6'-6 3/4"
N <sup>o</sup> OF TUBES	182
AREA THROUGH TUBES	9.25 sq ft
SURFACE OF TUBES	1095 sq ft
TOTAL HEATING SURFACE	1400 sq ft
WORKING PRESSURE	180 lbs



Ironace with Dia (extn) 3'-8 1/2" & 5'-0" dia of manhole approved.

Flanges welded longitudinally.

Double angles fitted.

N<sup>o</sup> 533.





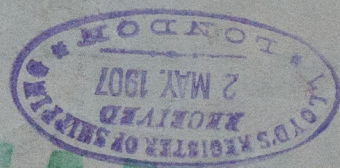
Sc. K. Celtic  
Messrs  
Earles 6<sup>th</sup> 533  
Boiler

w938-0113

No. 1568  
Lloyd's List  
360 lbs  
14.6.04  
J.B.

Hull Rpt. No. 19166

To Lloyd's  
7/2/07



RETAILER

© 2020

Lloyd's Register  
Foundation