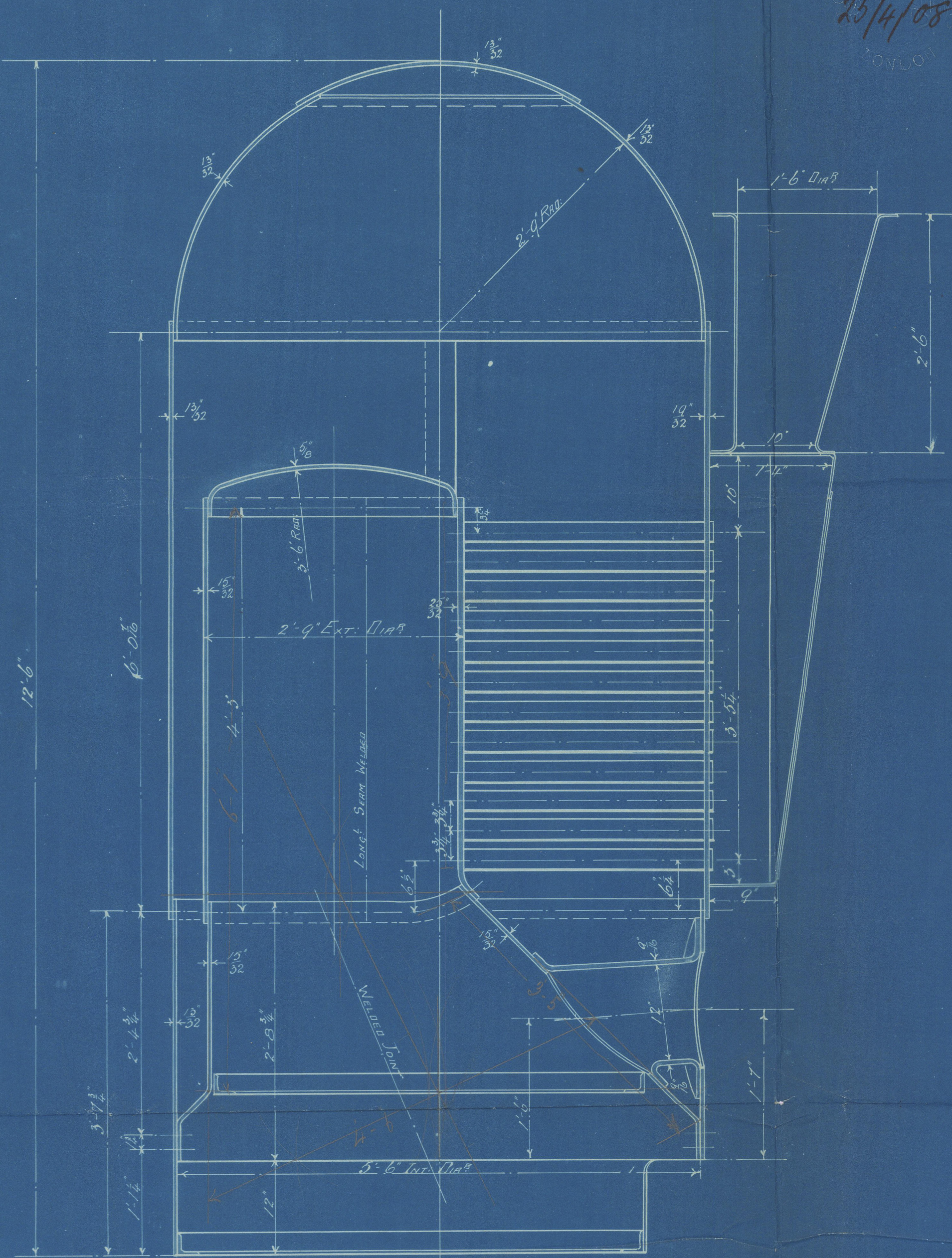
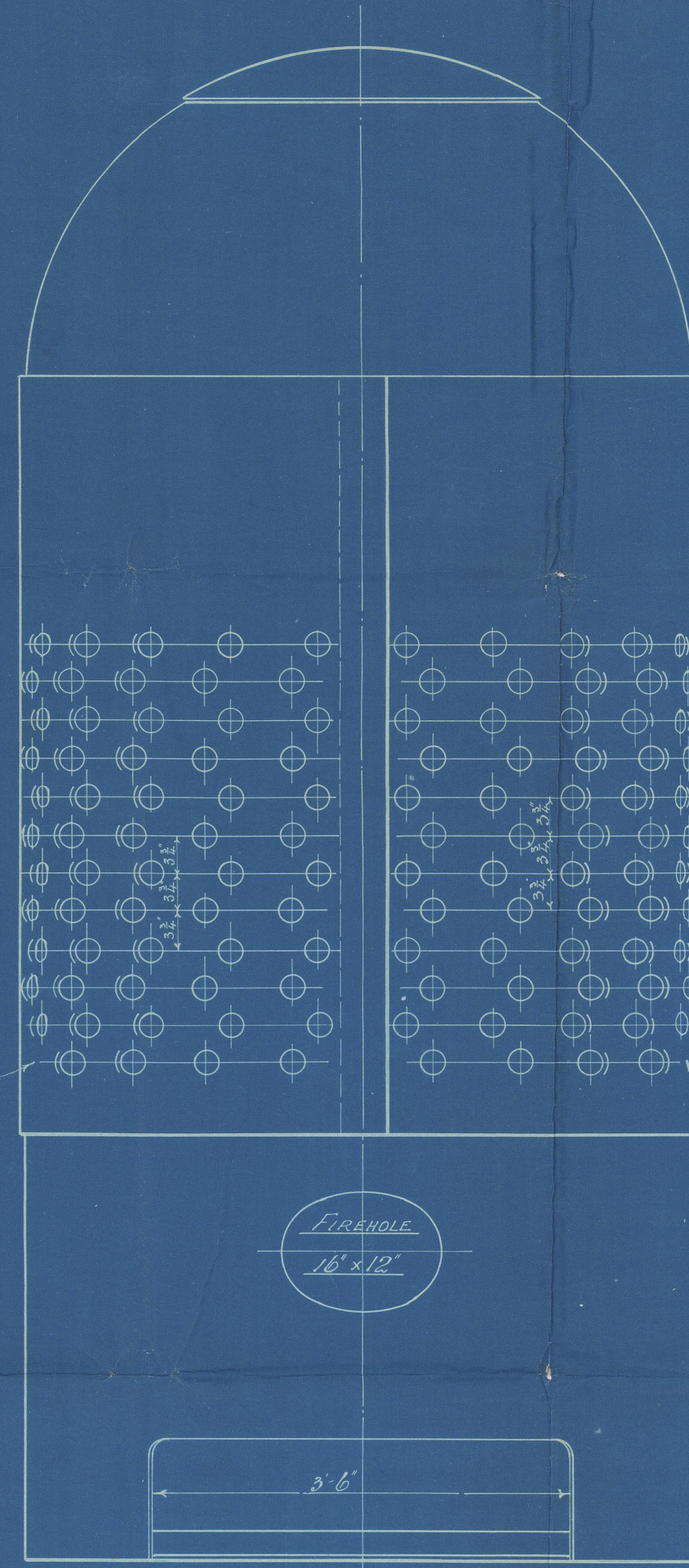


25/4/08

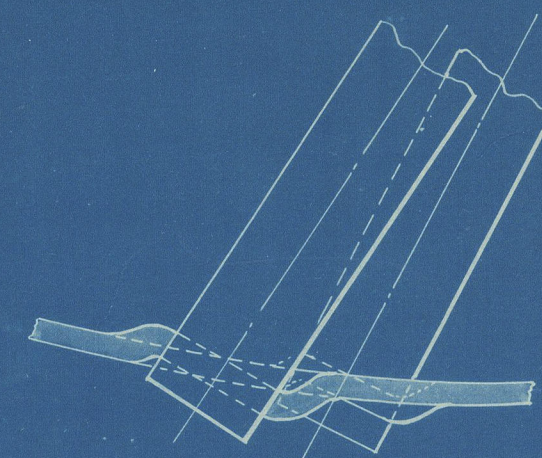
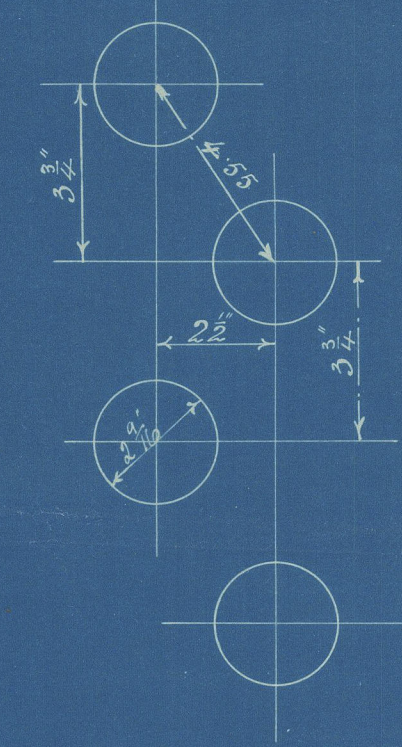


SECTIONAL ELEVATION

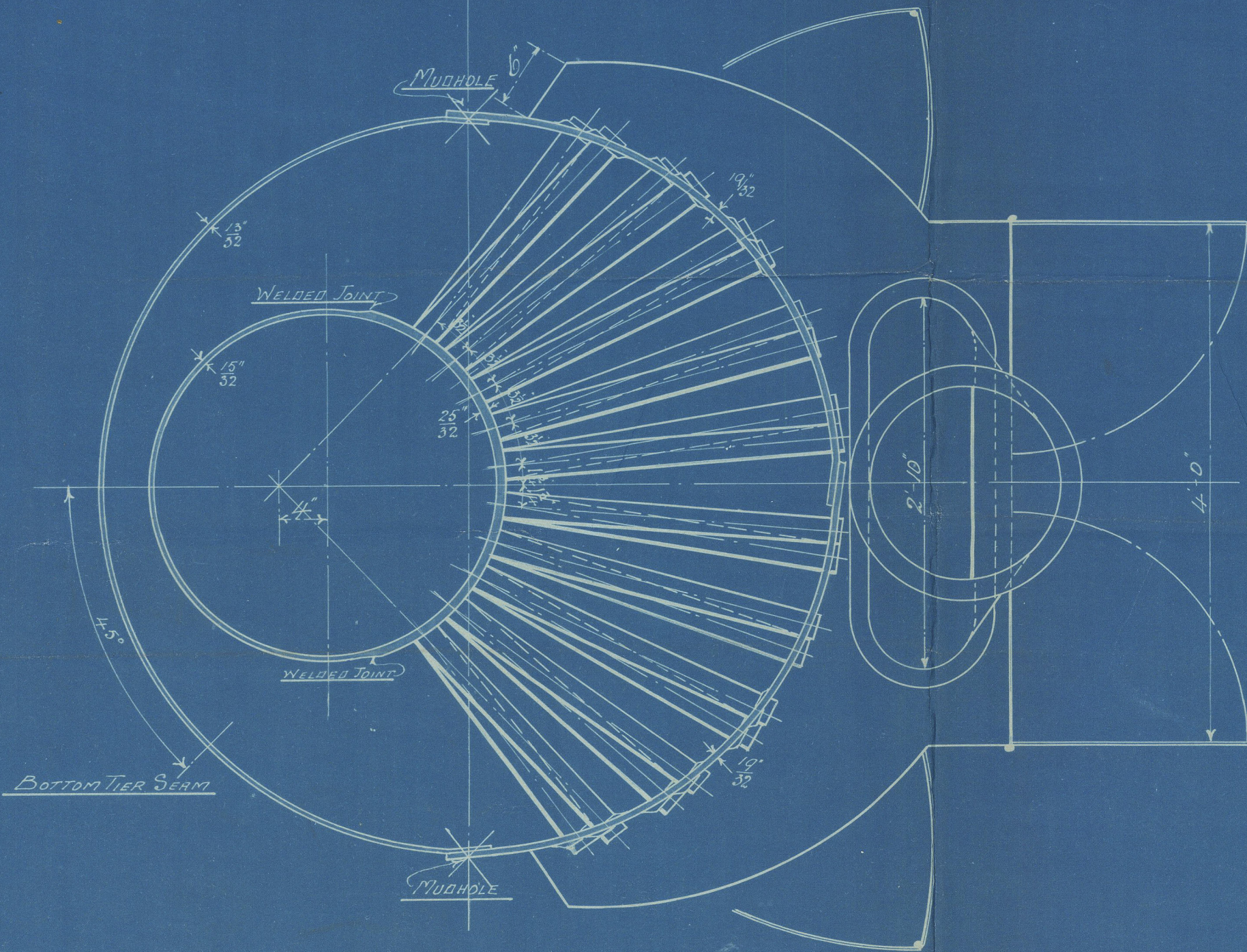


FRONT ELEVATION

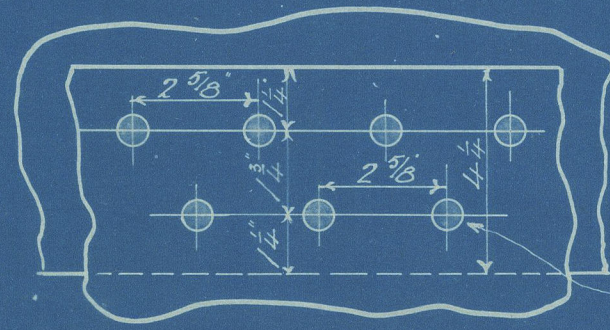
ARRANGEMENT OF TUBES ON SHELL



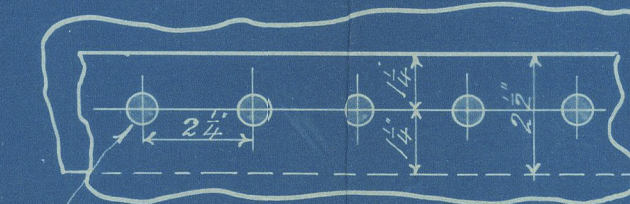
EXTREME WING ROW



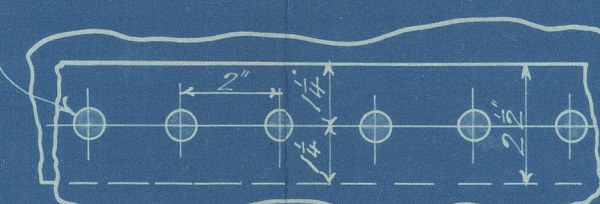
SECTIONAL PLAN



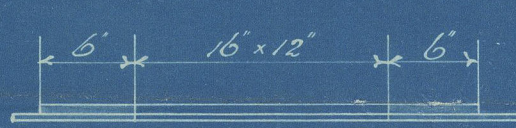
LONGITUDINAL SEAMS



CIRCUMFERENTIAL SEAMS



INTERNAL SEAMS



MANHOLE DOUBLER - 3/8" THICK



MANHOLE DOUBLER - 1/2" THICK

WORKING PRESSURE - 90 LBS PER SQ. INCH
 118 PLAIN TUBES 2 1/2" EXT. DIA. 1/4" THICK SWELLED 1/8" AT FRONT END
 TENSILE STRENGTH OF SHELL PLATES - 28 TO 32 TONS IN
 " " TUBE " 26 TO 30 " "
 " " ALL OTHER " 26 TO 30 " "
 STEEL PLATES AND RIVETS IRON LAPWELDED TUBES
 HEATING SURFACE 265 sq. ft. GRATE SURFACE 16 sq. ft.

TO LLOYD'S SURVEY

BLAKE PATENT BOILER - 12'-6" x 5'-6" x 90 LBS

SCALE 1" = 1 FOOT

BOILER NO. 3094.



25/4/08



© 2020 Lloyd's Register Foundation

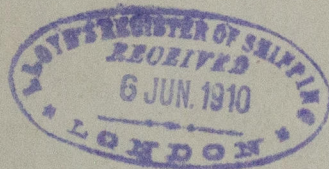
DETAILED

C. D. Holmes

Boiler

897/8

W. P 198 lbs



SS Corrientes

Hull Report

No. 22999

SS Cornthaux
Hull Report No.



© 2020

Lloyd's Register
Foundation

W935-0127