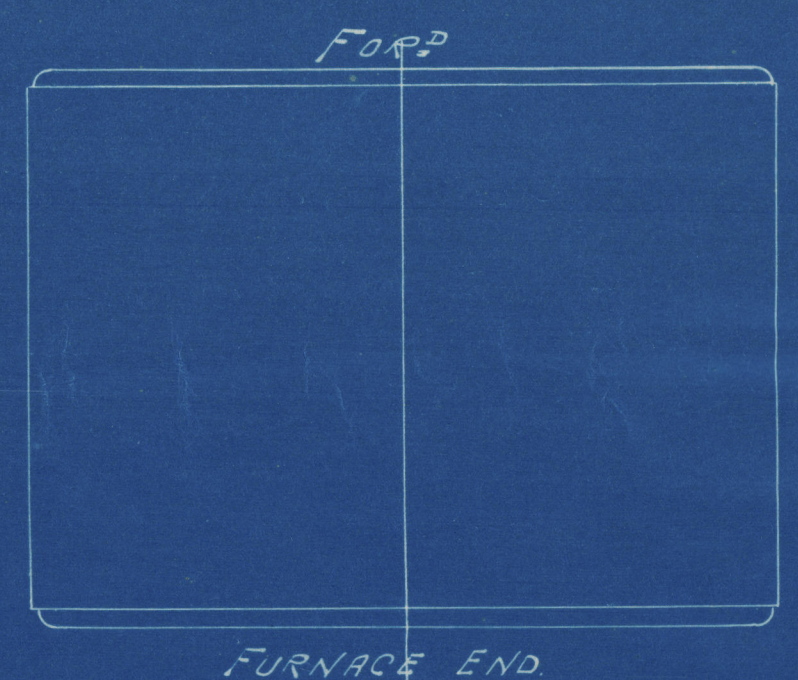


Lloyd's



FURNACE END

FURNACE END

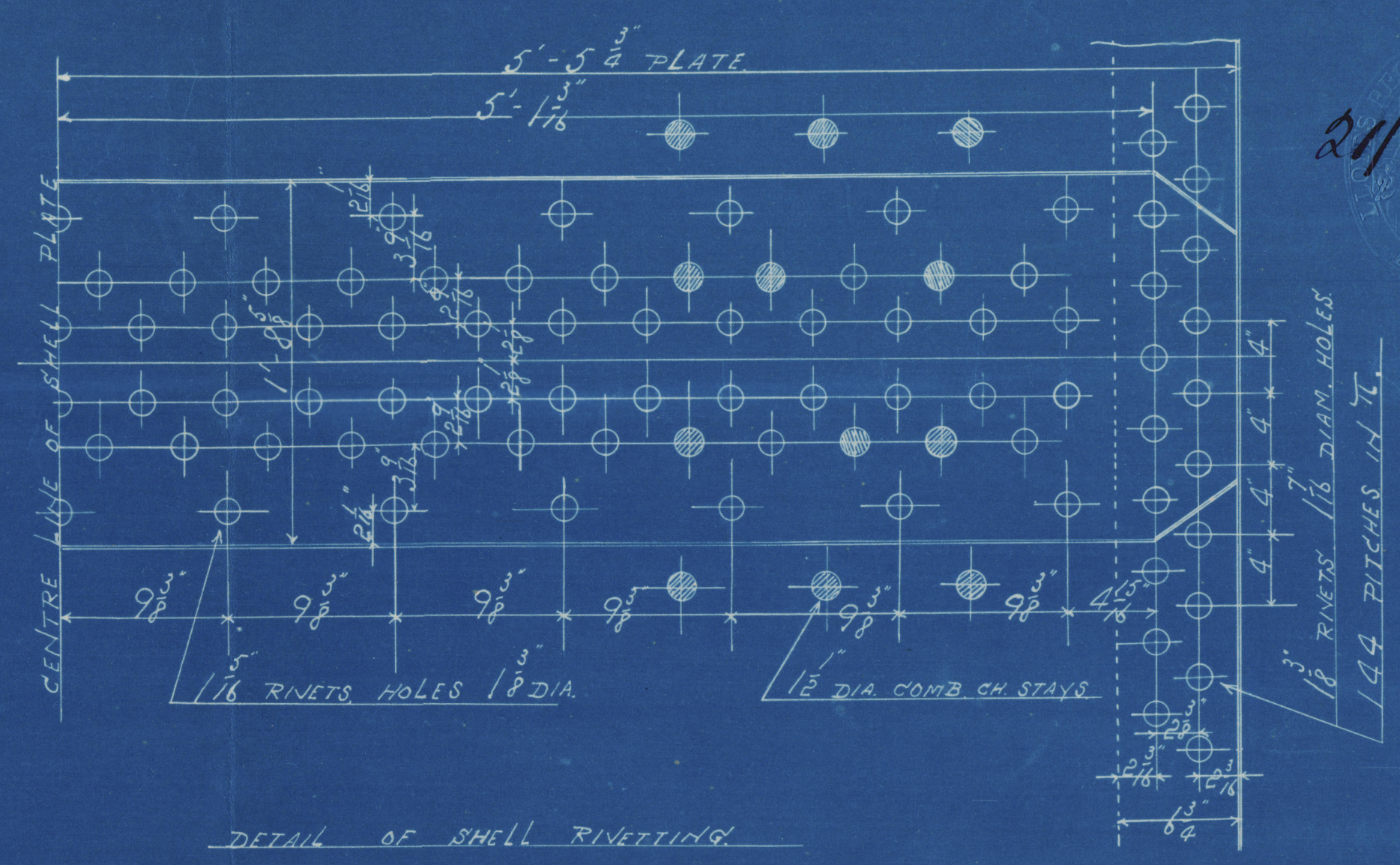
PORT

STOPS

POSITION OF BUTT STRAPS AND MANHOLE DOORS

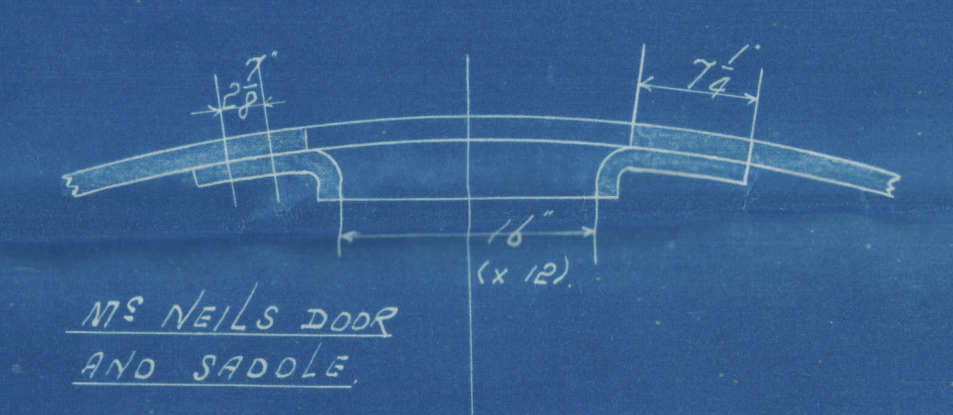
PARTICULARS		
HEATING SURFACE IN 410 TUBES	21479	
" 3 COMB CHS	296	
" 3 FURNACES	180	
" TOTAL	2623	
GRATE SURFACE (8' 1/2" BARS)	108	
AREA THROUGH TUBES	9.67	
RATIO HEATING SURFACE GRATE SURFACE	43.3	
GRATE SURFACE AREA THROUGH TUBES	6.25	
STEAM SPACE CUB. FEET	478	
FOR 3 BOILERS	7069.8	
HEATING SURFACE	1012	
GRATE		

TESTS FOR MATERIAL				
MATERIAL	POSITION	TENSILE STRENGTH		ELONGATION (LEAST)
		TONS PER SQ. IN.	KILOS PER SQ. CM.	
STEEL	SHELL	28 TO 32	44.1 TO 50.4	20%
"	STAY PLATES LONGITUDINAL STAYS	26 TO 30	40.9 TO 42.2	23%
"	SCREENED STAYS	26 TO 30	40.9 TO 42.2	23%
"	PIVOT BARS	26 TO 30	40.9 TO 42.2	25%

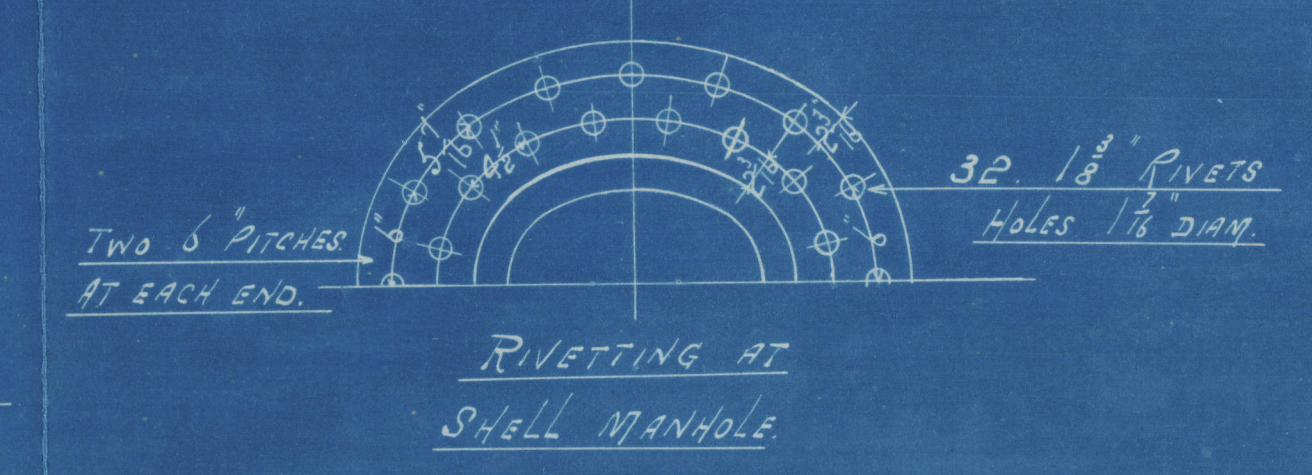


DETAIL OF SHELL RIVETTING
SCALE 1/2"

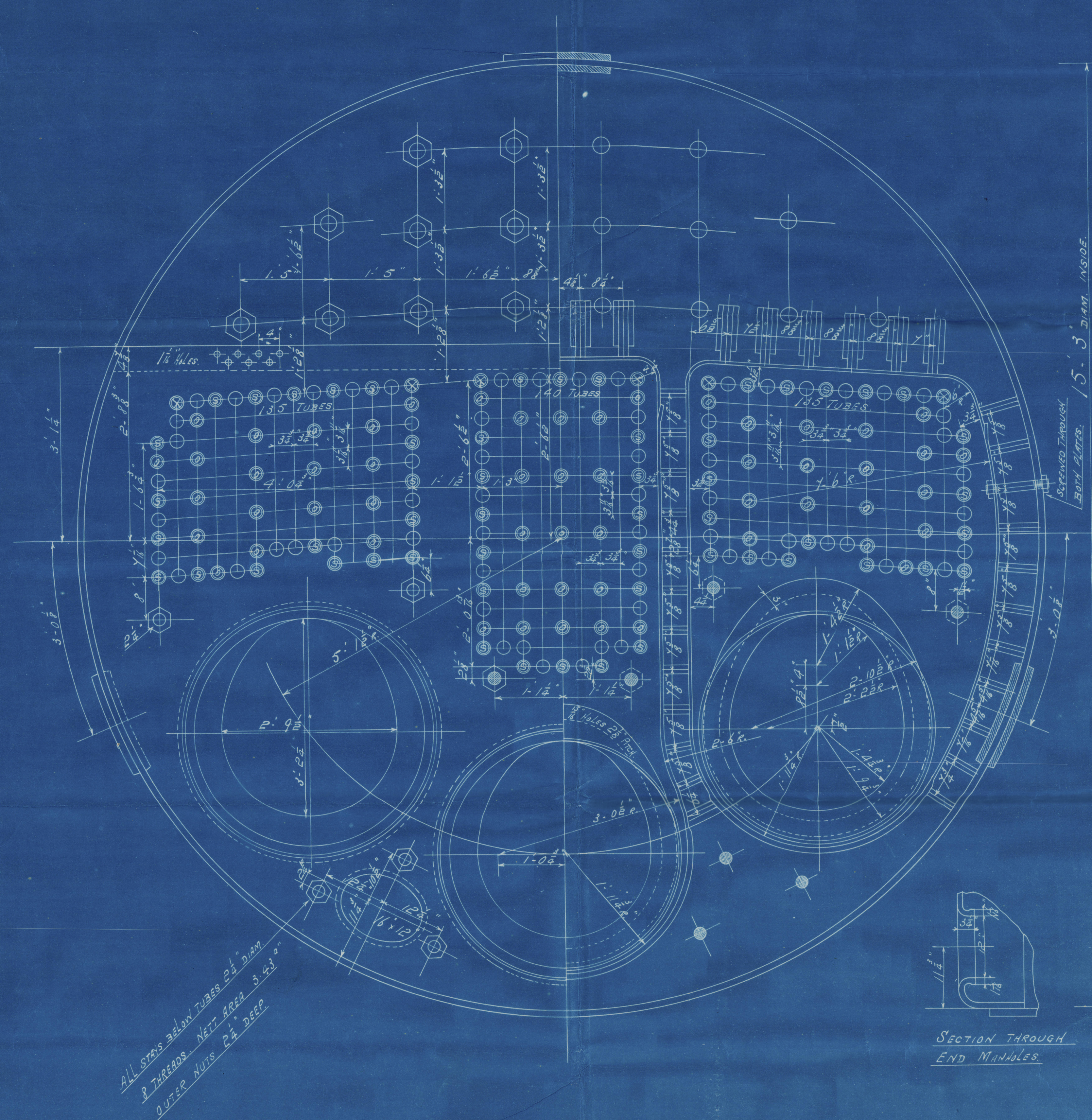
PARTICULARS		
LONGITUDINAL SEAMS		
SHELL $1\frac{1}{2}"$ RIVETS $1\frac{1}{8}"$ HOLES $1\frac{1}{8}"$ DIAM. PITCH $9\frac{1}{2}"$ PLATE 26.33 % RIVETS 8 $\frac{1}{2}"$ PITCH		LLOYDS
BUTT STRAPS $1\frac{1}{2}"$ THICK. SHELL PLATES AND BUTT STRAPS TO HAVE A TENSILE STRENGTH OF 28 TO 32 TONS PER SQ. IN.		
CIRCUMFERENTIAL SEAMS		
RIVETS $1\frac{1}{2}"$ HOLES $1\frac{1}{8}"$ DIAM. PITCH 4" PLATE 26.1% RIVETS 8 $\frac{1}{2}"$ PITCH		LLOYDS OP. 54
ALL HOLES DRILLED IN PLACE AFTER BENDING. SHELL BUTT STRAPS TO BE HYDRAULIC RIVETTED.		
BOILER STEEL TUBES AND GIRDERS OF IRON. UNDER LLOYDS SURVEY AND HAMBURG BOARD OF POLICE REGULATIONS FOR A WORKING PRESSURE OF 125 LBS PER SQ. IN.		



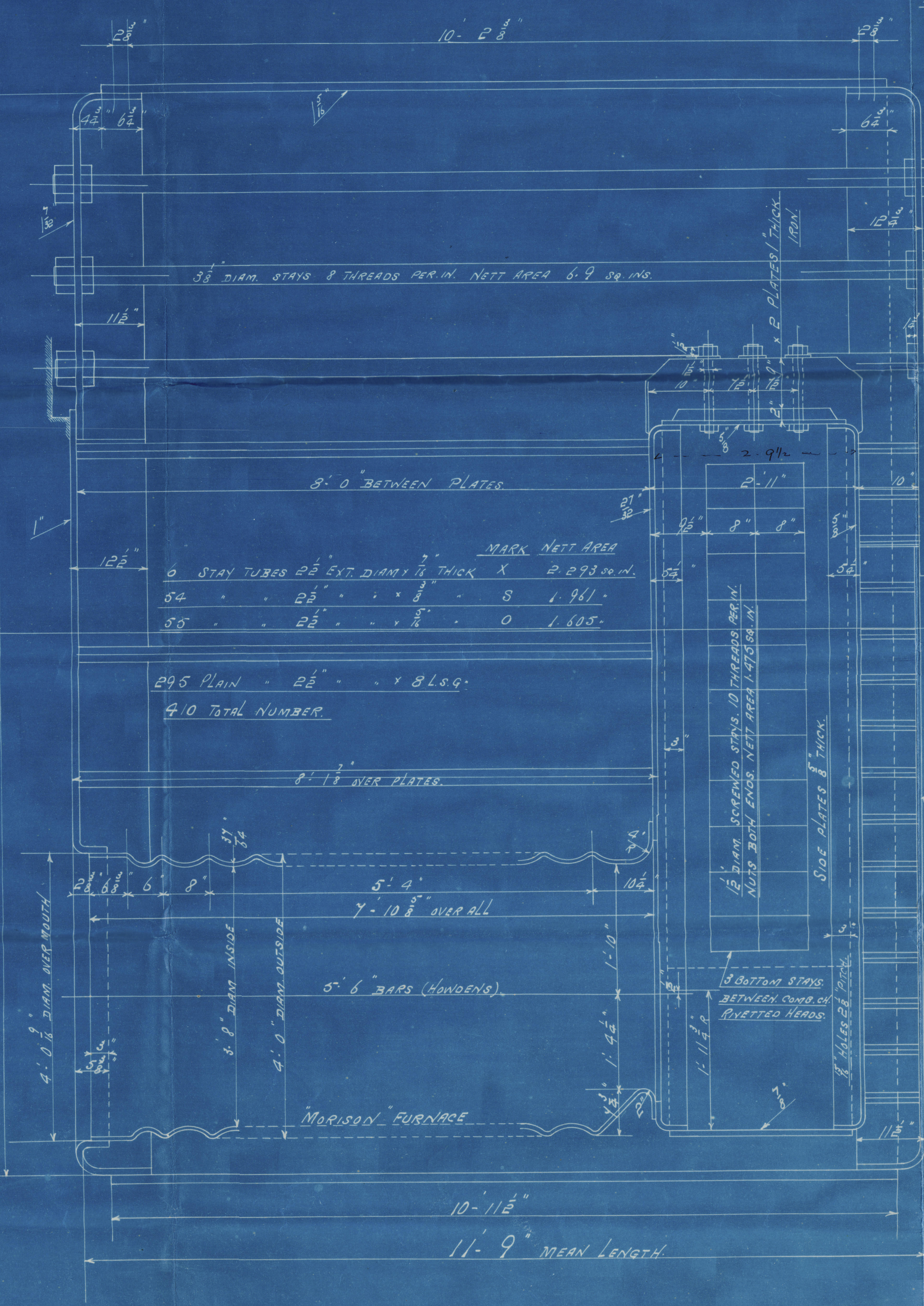
MANHOLE DOOR AND SADDLE



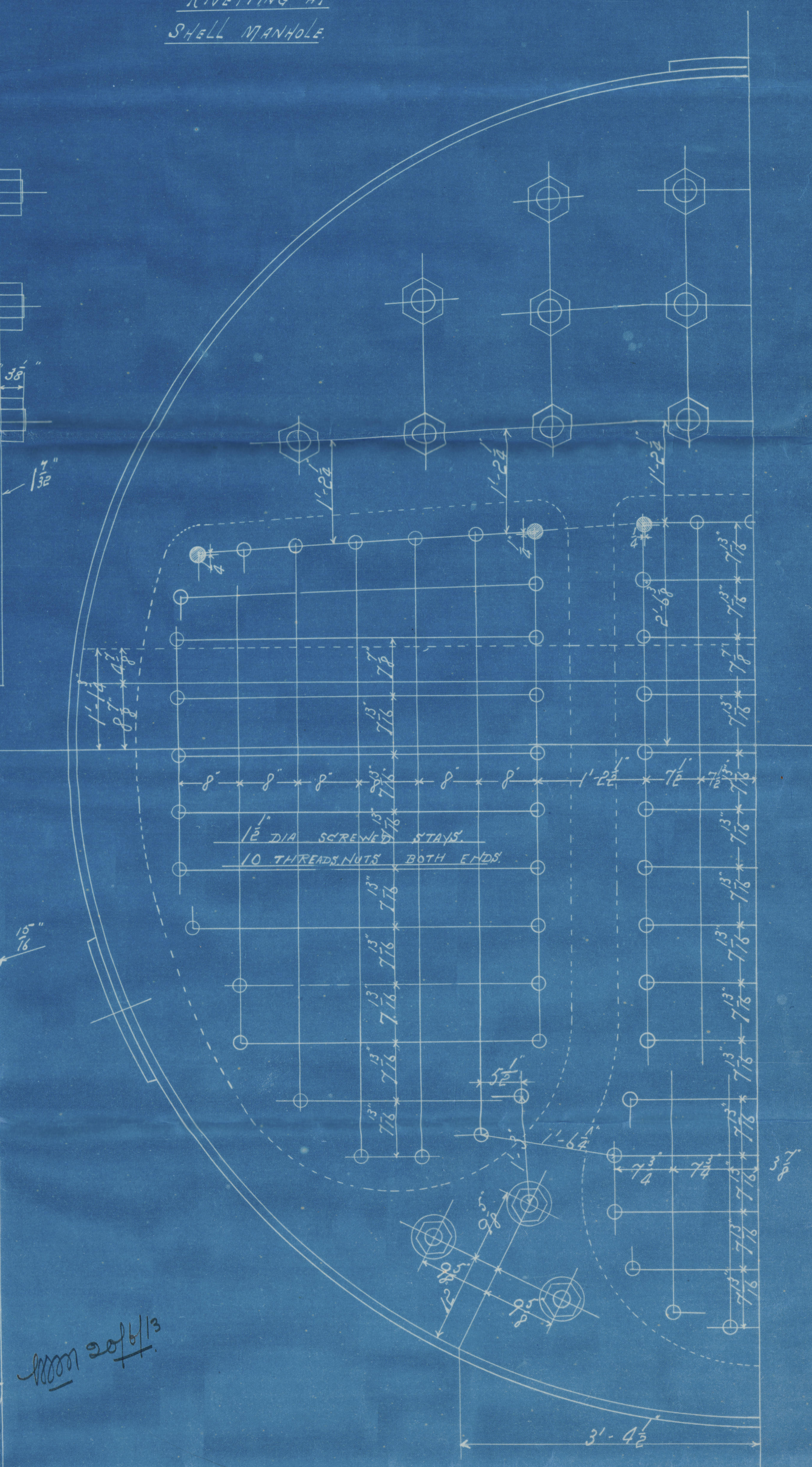
RIVETTING AT SHELL MANHOLE



ALL STAYS ALONG TUBES 2 1/2" DIAM. 8 THREADS NETT AREA 3.23 SQ. IN. OUTER NUTS 2 1/2" DEEP



SECTION THROUGH END MANHOLE



MARGINAL STAYS IN COMB CHS BACKS MARKED 2" DIAM. 8 THREADS PER IN. NETT AREA 1.98 SQ. IN. ALL TO HAVE NUTS BOTH ENDS.

445

3 MAIN BOILERS FOR N° 445.
SCALE 1" = 1 FOOT.



Lloyd's Register
WART-003

Dunsmuir Jackson. H.H.B.
(3 Man - Boilers)

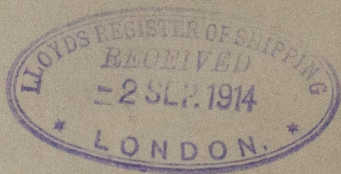
WP 185 lb. 20/6/13

Langemouli Greenock
S/S 358.



GLASGOW REPORT No. 34337

S/S "Luyahoga"



RETAIN

LR

© 2020

Lloyd's Register
Foundation

W927 20103