

3. STEEL BOILERS. N^o A17S.

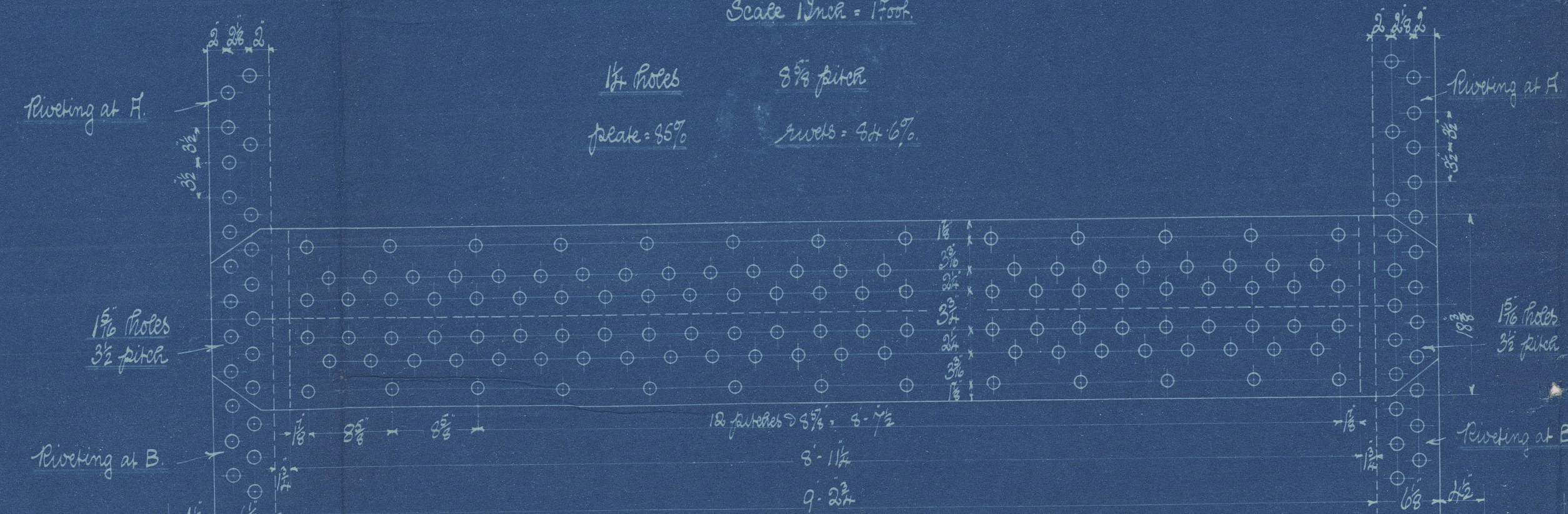
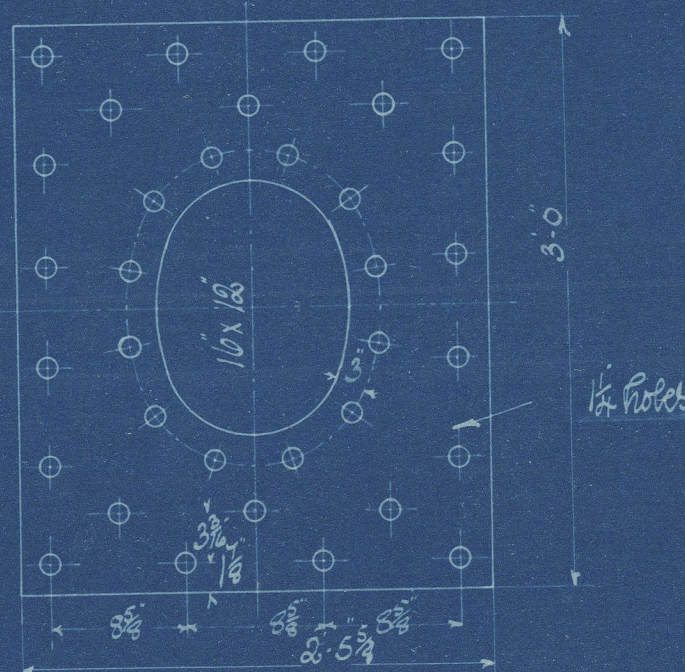
Working Pressure = 180 lbs per sq inch (Reg'd)
 Test Pressure = 300 lbs per sq inch
 Scale Draw = 1 inch

DIMENSIONS

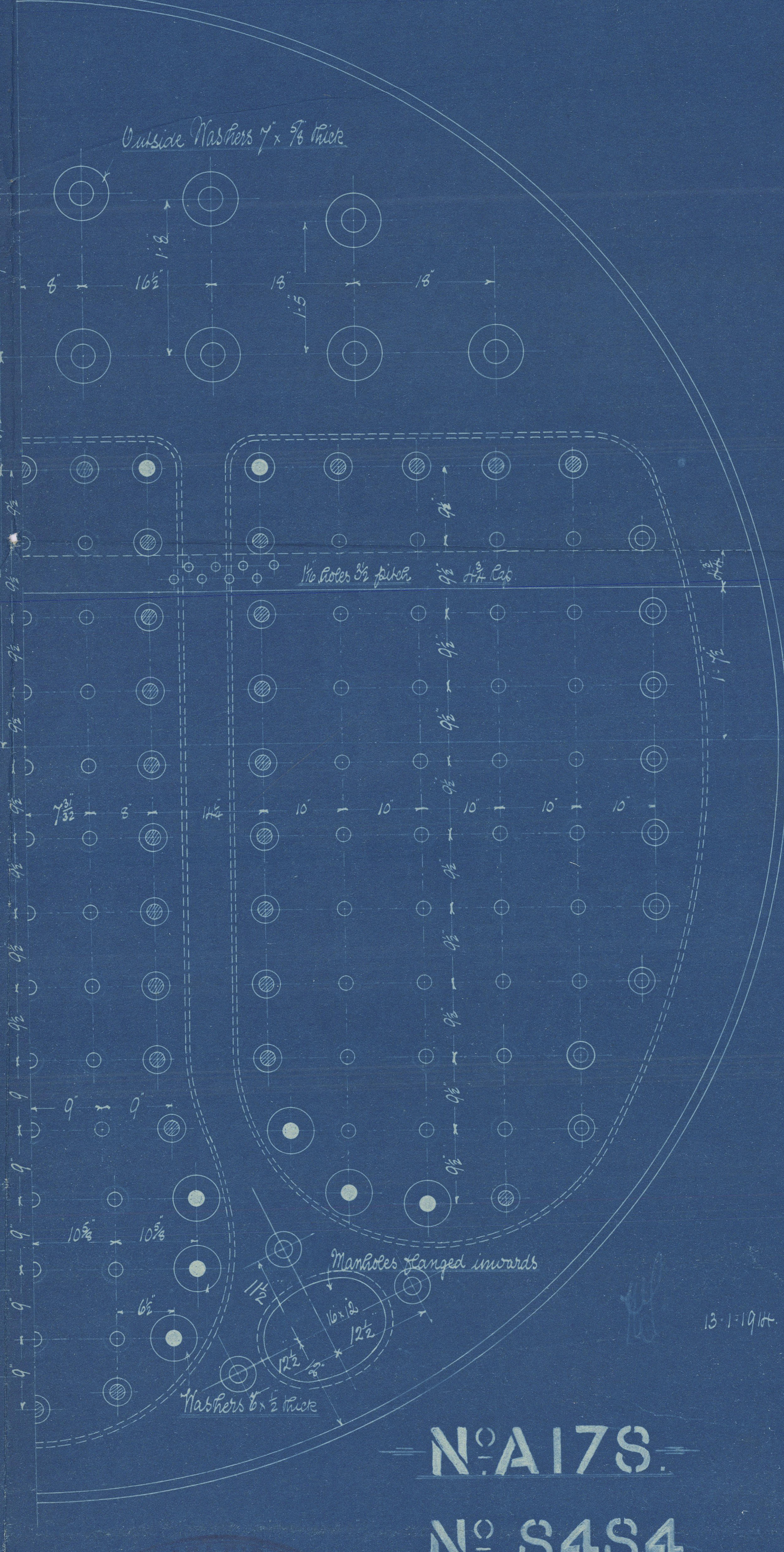
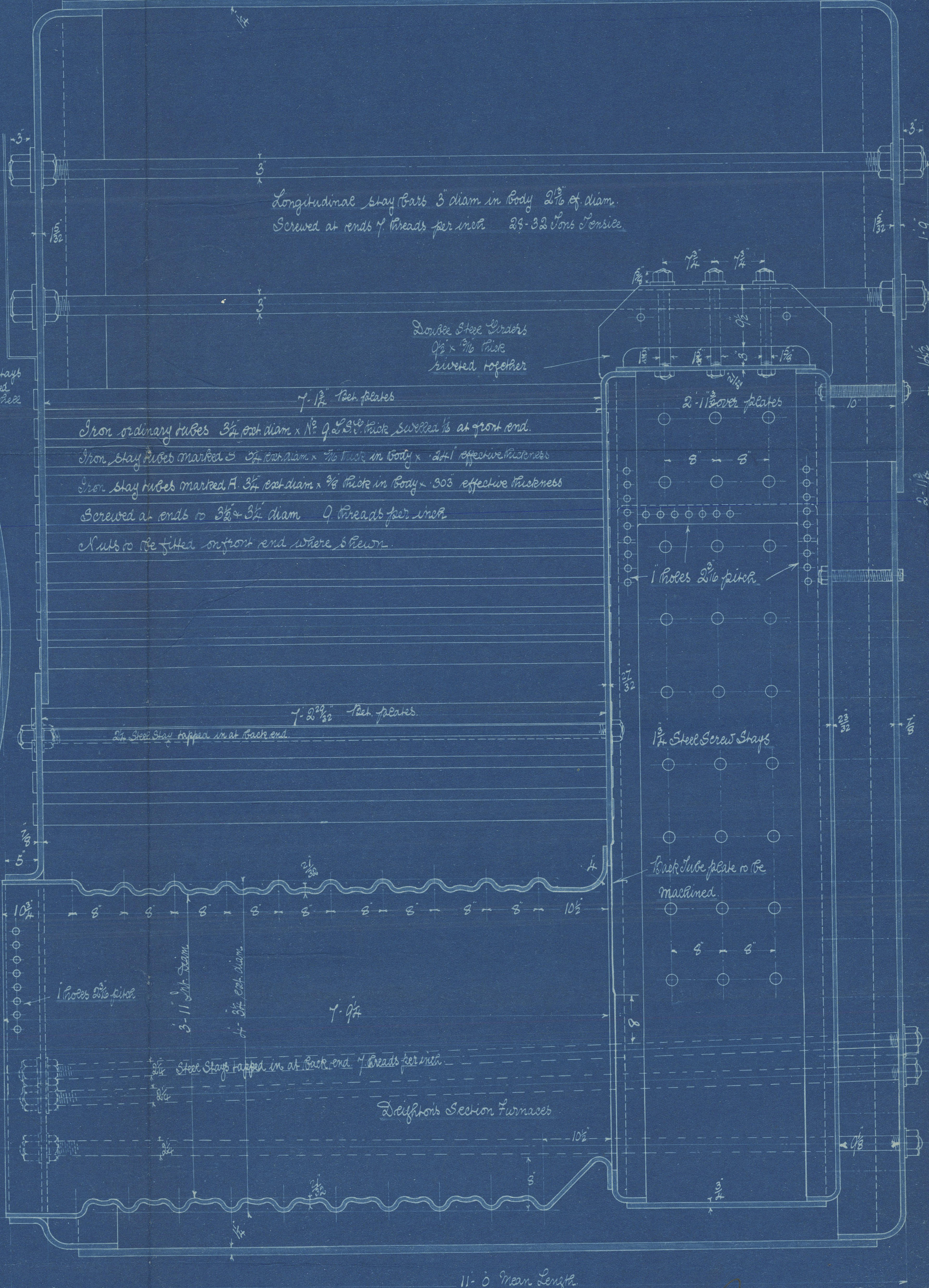
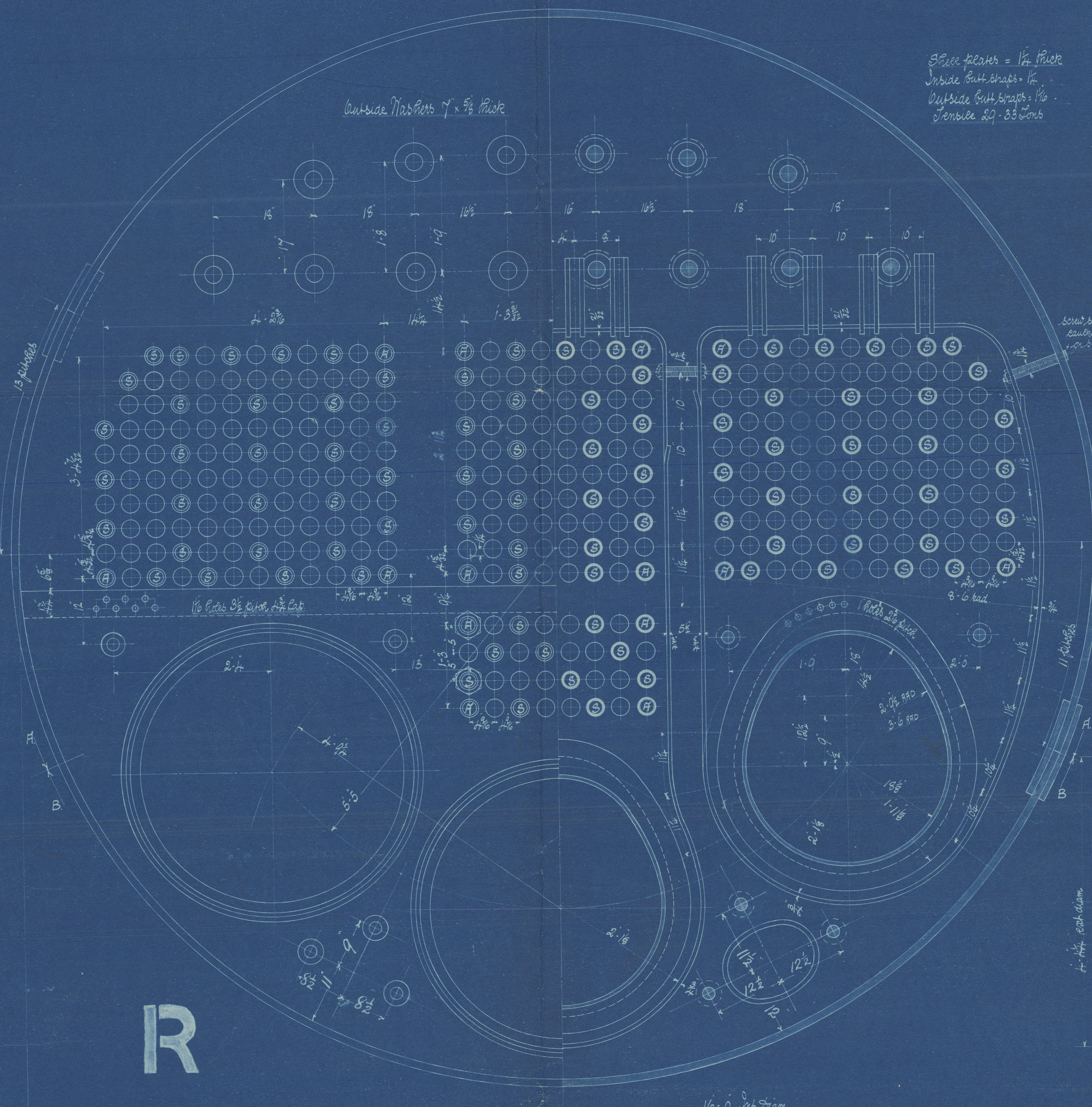
	1 Boiler	3 Boilers
LENGTH OF FIRE BARS	5'-6"	
AREA OF FIRE GRATE	64.6 sq ft	193.8 sq ft
DIAM OF TUBES OUTSIDE	3 1/2"	
LENGTH OF TUBES Between plates	7'-1 1/2"	7'-2 1/2"
NO OF TUBES	344	1032
AREA THROUGH TUBES	15.3 sq ft	45.9 sq ft
SURFACE OF TUBES	200 sq ft	625 sq ft
TOTAL HEATING SURFACE	250 sq ft	770 sq ft
WORKING PRESSURE	180 lbs	

Note!
 All plates, rivets, & stay bars to be of Siemens Martin Steel.
 All rivet holes to be drilled in place after the plates are bent.
 All flanged plates to be annealed after flanging.
 The screw stays are 1 1/2" dia. effective diam. screwed into both plates & nutted at both ends. (Screwed 10 threads per inch.)
 At manhole in place 16" dia. 8" thick and longitudinally and a doubling plate 3'-0" x 2'-5 1/2" after removal.

Doubling Plate found Manhole
 1/2" Rivets 20-33 bolts inside



- 5" Steel Screw Stays between tubes - Nutted at both ends
 - 1 1/2" Steel Screw Stays between tubes - Nutted at both ends
 - 1 1/2" Steel Screw Stays between tubes - Nutted at both ends
 - 1 1/2" Steel Screw Stays between tubes - Nutted on inside & caulked on outside
- All screwed 10 threads per inch.



R

N^o A17S.

N^o S4S4.

R

RETAIN

— amended —
Earle's S. B. & E. Co. Ltd

3 Steel Boilers

— No. A 178 —

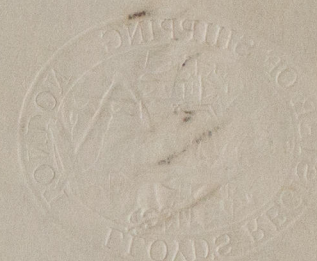
W.P. 180 lbs

W925-0020



s/s Cannizaro

Hull Rpt No. 28028



© 2021

Lloyd's Register
Foundation