

3. STEEL BOILERS N° 616.

WORKING PRESSURE - 200 LBS. LLOYDS.

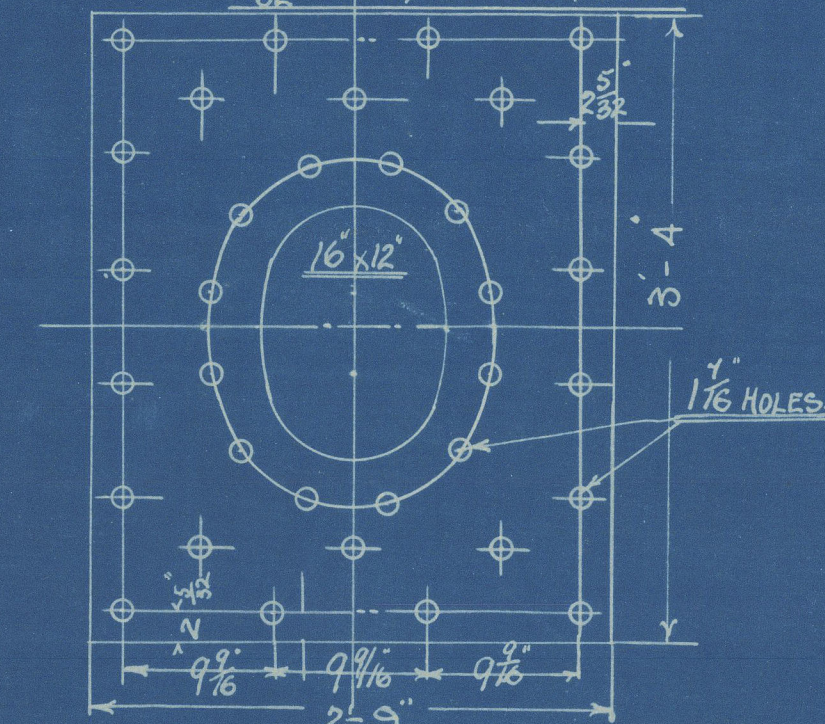
TEST - 400 LBS.

SCALE - 1" = 1'00".

NOTES-

- ALL PLATES, RIVETS & STAY BARS TO BE OF SIEMENS MARTIN STEEL.
- ALL RIVET HOLES TO BE DRILLED IN PLACE AFTER THE PLATES ARE BENT.
- ALL FLANGED PLATES TO BE ANNEALED AFTER FLANGING.
- THE SCREW STAYS ARE $1\frac{1}{8}$, $1\frac{3}{8}$ & $1\frac{5}{8}$ EFFECTIVE DIAMETER, SCREWED INTO BOTH PLATES & NUTTED AS SHOWN. (SCREWED 10 THRS. PER INCH.)
- A MANHOLE IN SHELL 16×12 WITH SHORTER AXIS LONGITUDINALLY & A DOUBLING PLATE $3'-4" \times 2'-6" \times \frac{1}{32}$ THICK FITTED ROUND IT.

DOUBLING PLATE ROUND MANHOLE
 $1\frac{1}{32}$ THICK, 30 TO 34 TONS.



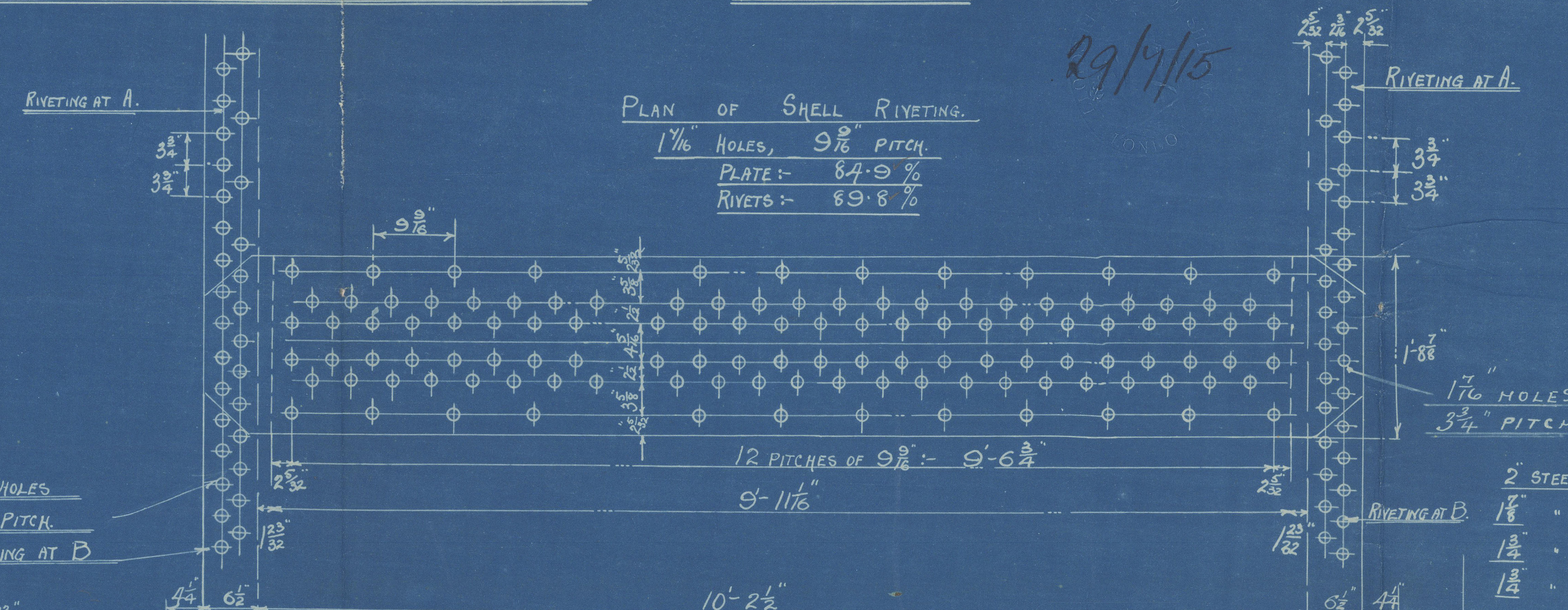
1/16 HOLES
3/4 PITCH.
RIVETING AT B

SHELL - 1/32 THICK
INSIDE BUTT STRAPS - 1/32
OUTSIDE " " - 1/32

TENSILE STRENGTH 30 TO 34 TONS PER SQ. INCH

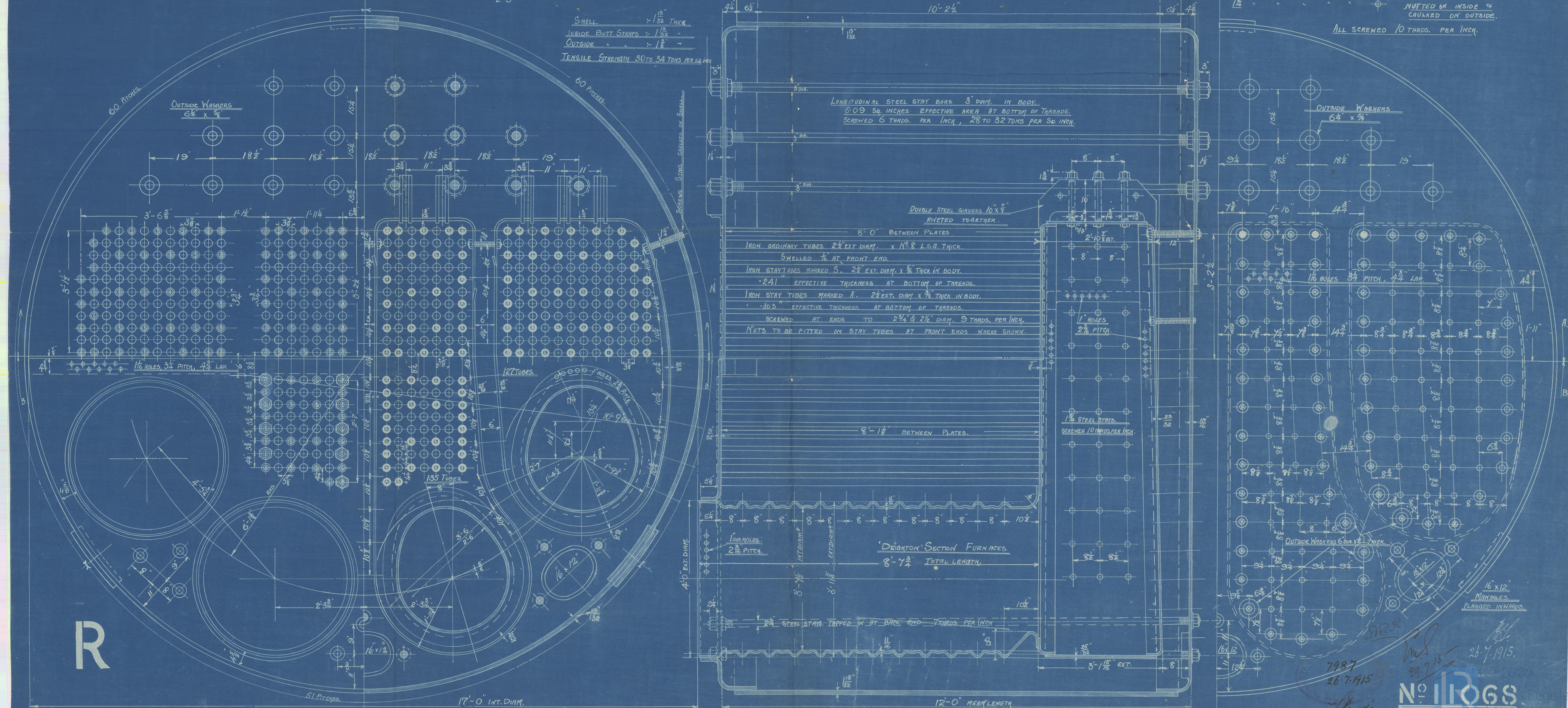
PLAN OF SHELL RIVETING.

1/16 HOLES, 9/16 PITCH.
PLATE - 64.9 %
RIVETS - 69.8 %



DIMENSIONS.	1 BOILER	3 BOILERS
LENGTH OF FIRE BARS	6' 9"	
AREA OF FIRE GRATE	63.375 sq ft	250.125 sq ft
DIAM OF TUBES OUTSIDE	2 1/2"	
LENGTH OF TUBES BETWEEN PLATES	8'-0" & 8'-1 1/2"	
Nº OF TUBES	524.	1572.
AREA THROUGH TUBES	12.3 sq ft	36.9 sq ft
SURFACE OF TUBES	2750 sq ft	8250 sq ft
TOTAL HEATING SURFACE	3365 sq ft	10095 sq ft
WORKING PRESSURE	200 lbs.	

2 STEEL SCREW STAYS SHOWN THUS:-
NUTTED AT BOTH ENDS
NUTTED ON INSIDE & CAULKED ON OUTSIDE.
ALL SCREWED 10 THRS. PER INCH.



R

7987
26.7.1915

26.7.1915
N° 11068

Register
Lloyds

W920-0040

Messrs Parkes & Co Ltd

3 Boilers No 616

Working pressure 200lbs

28/7/15



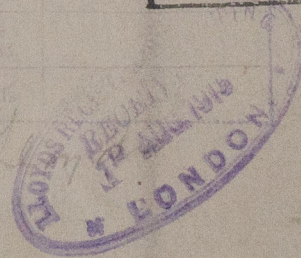
Starb'd

No 3189
Lloyds test
400lbs
2-2-17 FLS



Port & Centre

No 3194
Lloyds test
400lbs
16-2-17 FLS



H. C. Lucarigo

Hull Report No
29935



© 2020

Lloyd's Register
Foundation