

N° 582.4.

COMPLETE SUPERSTRUCTURE VESSEL.

MIDSHIP SECTION

375'-0" x 52'-3 3/4" M^{LD} (36'-3 3/4" M^{LD} D^{LD})
(28'-3" M^{LD} 2ND D^{LD})

To CLASS 100A.1 WITH FREEBOARD.
SCALE 1/2" = 1 FOOT.

NUMERALS

- DEPTH D = 36.31'
- FIRST NUMERAL L x D = 375 x 36.31 = 13616.
SECOND " L(B.D) = 375 x 88.62 = 33232
- PROPORTIONS $\frac{L}{B} = \frac{375}{36.31} = 10.32$
- FRAMING DEPTH = 24.13 = d.

EQUIPMENT No.

L(B.D) = 375 x 88.62 = 33232

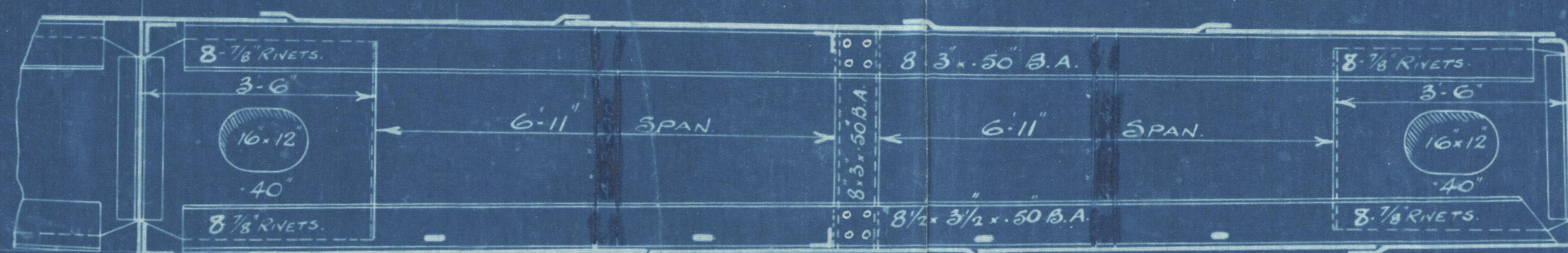
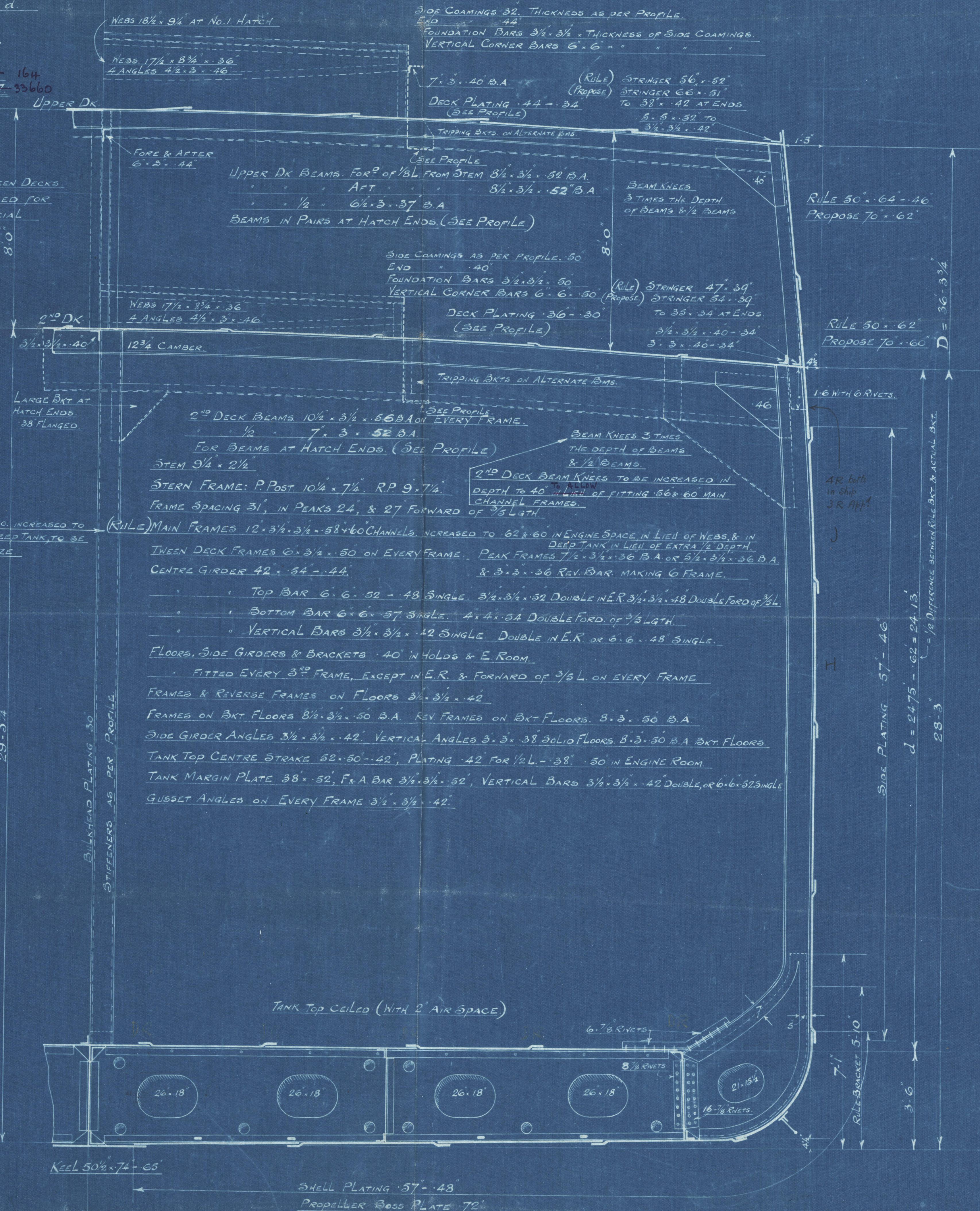
DECKHOUSES & CASINGS = 264

FORECASTLE = 164
33637-33660

EQUIPMENT

- 3 BOWERS STOCKLESS COLLECTIVE WEIGHT = 170 1/2 CWT.
- 1 STREAM ANCHOR 16 1/4 CWT. EX STOCK.
- 270 FMS. 2 3/16" STUD CHAIN CABLE.
- 90 " 4 3/4" S.W. STREAM LINE
- 120 " 4 3/4" S.W. TONLINE
- 2 @ 90 FMS. 2 3/4" STEEL WIRE.
- 2 @ 90 " 2 1/2 " "

SINGLE ROW OF STANCHIONS IN TWEE DECK.
5 x 5 - 64.9 62" APART, REELED FOR
SHIFTING BOARDS. FOR SPECIAL
STANCHIONS AT HATCH ENDS.
SEE PROFILE.



45
582.4
H-3.24

DOXFORDS 582 & 4

MIDSHIP SECTION



motorship "Vinemoor" No 582

SUNDERLAND RPT. No. 28918

motorship "Westmoor" No 584

SUNDERLAND RPT. No. 28940

W92-0075



© 2020

Lloyd's Register
Foundation